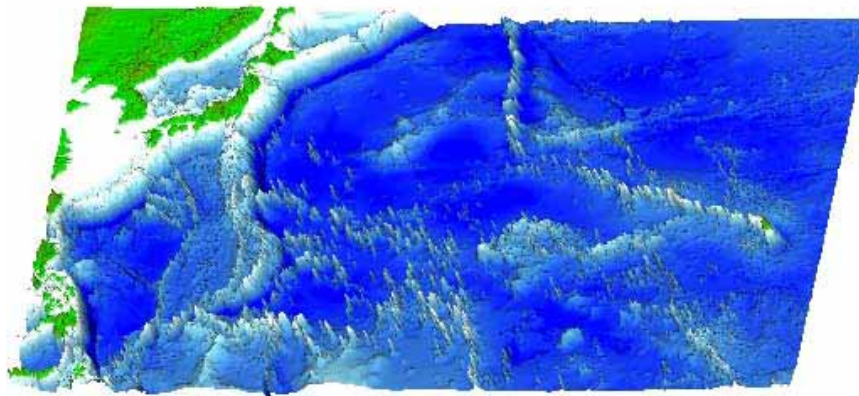


(Updated as of Feb.17, 2006)

International Symposium
on
Scientific and Technical Aspects on the Establishment
of the Outer Limits of the Continental Shelf
beyond 200 Nautical Miles



A coastal State can establish its outer limits of the continental shelf beyond 200 nautical miles from the territorial sea baselines based on Article 76 of the United Nations Convention on the Law of the Sea (UNCLOS). For establishing its outer limits, the coastal State shall submit information on its outer limits to the Commission on the Limits of the Continental Shelf (CLCS) established under Annex II to the UNCLOS for its recommendation. The coastal State shall make its submission within 10 years after the date of entry into force of the UNCLOS for that State. However, the meeting of States Parties, held in 2001, decided that 10-year period would commence as of 13 May 1999, for a State for which the UNCLOS entered into force before that date. The coastal State is to establish its outer limits, on the basis of the recommendation of the CLCS.

The CLCS consists of 21 members who are experts in the field of geology, geophysics or hydrography, elected by States Parties to the UNCLOS from among their nationals, having due regard to the need to ensure equitable geographical representation, who shall serve in their personal capacities. The CLCS has already received four submissions (from Russian Federation, Brazil, Australia and Ireland) and had made recommendations on the submission by Russian Federation. Preparation of submission is now underway at many coastal States.

The Ministry of Foreign Affairs of Japan and the United Nations University will co-host the international symposium on the issues relating to establishing the outer

limits of the continental shelf, inviting many speakers from Japan and abroad (For details, please see below.). Members of the CLCS are being invited.

1 . Date and Venue of the Symposium

Date: 6-7 March 2006

Venue: U-Tant International Conference Hall (3F) ([photo](#)),

<http://www.unu.edu/hq/conference-facilities/index.htm>)

United Nations University ([map](#)), Tokyo, Japan

<http://www.unu.edu/hq/ginfo/contact.html>)

(Address: 53-70, Jingumae, 5-chome, Shibuya-ku, Tokyo, 150-8925 Japan)

(Please click [here](#) for subway route map in Tokyo)

2 . Languages

Simultaneous interpretation between English and Japanese will be provided.

3 . Brief Explanation of the Program

(Please click [here](#) to view the program (PDF))

(1) Opening Part

Mr. Shiozaki, Senior Vice-Minister for Foreign Affairs of Japan will open the symposium and deliver the Keynote address. **Professor Zakri**, Director of United Nations University (UNU) Institute of Advanced Studies, will deliver welcome remarks on behalf of UNU. Following it, **Mr. Croker**, Chairman of the CLCS, and **Dr. Golitsyn**, Director of Division for Ocean Affairs and the Law of the Sea (DOALOS) of the United Nations, will speak on the activities of the CLCS and DOALOS respectively. **Professor Usui**, Kochi University, will speak on marine mineral resources to provide the audiences with the current knowledge on these minerals.

(2) Part I

A coastal State which wishes to extend its limits of the continental shelf is required to prepare the documents to make a submission to the CLCS for establishing the outer limits of the continental shelf. The preparation needs knowledge of geology, geophysics and hydrography, and may require capability of surveys. Many States, especially developing States, face the difficulties in such preparations.

Australia has already made its submission to the CLCS. **Mr. Alcock**, Geoscience Australia, will make presentation on its approach to its submission.

Following that presentation, experts from the developing States will make brief presentations on the situation in their countries and difficulties which they are facing. Finally, **Dr. Parson**, National Oceanography Centre, U.K., **Mr. Tani**, Chairman of the IHO/IAG/IOC Advisory Board on the Law of the Sea (ABLOS), **Dr. Prosser** and **Dr. Baker**, UNEP/GRID-Arendal, and **Dr. Golitsyn**, as representatives of respective organizations and institutions which are or are willing to be actively involved in providing training and assistance in this field to developing States, will explain their current and further contribution.

(3) Part II

Article 76 of the UNCLOS provides that the continental shelf of a coastal State extends to the outer edge of the continental margin or to a distance of 200 nautical miles from the territorial sea baselines where the outer edge of the continental margin does not extend up to that distance. There are several types of continental margins, such as “passive margins” and “active margins.” The symposium will focus on the issue of active margins which are very common in the Pacific Ocean, and discuss the latest outcomes of scientific research.

As the keynote address of this Part, **Professor Le Pichon**, Collège de France, who is world-famous in the field, will speak on active margins. Following the keynote address, **Professor Mayer**, Director of Center for Coastal and Ocean Mapping, University of New Hampshire, U.S.A., will speak on transitional margins. **Dr. Kodaira**, Japan Agency for Marine-Earth Science and Technology (JAMSTEC), will speak on continental crust in intra-oceanic arcs. **Dr. Wright**, New Zealand’s National Institute of Water and Atmospheric Research, will speak on prolongation in convergent margin systems, specifically presenting examples from New Zealand. **Dr. Ohara**, Hydrographic and Oceanographic Department of Japan Coast Guard, will speak on deformation and growth of arcs by collision of oceanic plateaus, specifically a case study on the Ogasawara region.

Session 2 will focus on new developments and trends in ocean science relating to the continental margin and continental shelf. **Dr. Tatsumi**, JAMSTEC, will make presentation on subduction factory. **Professor Coffin**, Ocean Research Institute, University of Tokyo, will speak on hotspot modification of crust in the ocean. **Dr. Taira**, JAMSTEC, will make presentation on Integrated Ocean Drilling Program (IODP), an international drilling program for scientific deep-sea research led by Japan and U.S. For this program, mainly two drilling vessels, a newly commissioned Japanese deep sea drilling vessel “Chikyu” and a U.S.

drilling vessel, will be operated.

Finally, **Professor Le Pichon** will make comments, taking into account of the presentations and discussions in Part II.

4 . Registration Information

Persons who wish to participate in the symposium need to register **by 28 February 2006**. Necessary information for registration is listed below. The information shall be sent to Ocean Division of the Ministry of Foreign Affairs by e-mail (kaiyo@mofa.go.jp). Due to the limited seats at the Conference Hall, places will be offered on first-come, first-served basis. If you did not register in advance, you might not be able to attend the symposium.

- (1) Name
- (2) Affiliation
- (3) Mailing Address
- (4) Telephone number
- (5) FAX number
- (6) E-mail Address

5 . Inquiry on the Symposium

Ocean Division, Economic Affairs Bureau,
Ministry of Foreign Affairs of Japan (attn: Mr. Kokubu)
Address: 2-2-1, Kasumigaseki, Chiyoda-ku, Japan 100-8919
Tel: +81-3-5501-8000 Ext. 2079
FAX: +81-3-5501-8332

6 . Information on Japan

Please click the following links to get information on Japan, including visa information, transportation and accommodations:

Visit Japan Links (<http://www.mofa.go.jp/link/visit.html>)

Web Japan - Gateway for all Japanese Information

(<http://web-japan.org/index.html>)
