

The Path Towards the Revitalization of Fukushima



Fukushima Prefecture

Plan for Revitalization in Fukushima

3 Basic Concepts

- Building a safe, secure and sustainable society free from nuclear power**
- Revitalization that brings together everyone who loves and cares about Fukushima**
- A homeland we can all be proud of once again**

12 priority projects for revitalization

Living with peace of mind

Environmental restoration

Assistance for rebuilding livelihoods

Protecting the physical and mental health of citizens

Raising and supporting our children and young people, who are our future

Work in your hometown

Revival of primary industries

Revitalization of SMEs

Promotion of renewable energy

Medical industry cluster

Rebuild towns, connect people

Building Fukushima connections

Fukushima tourism exchange

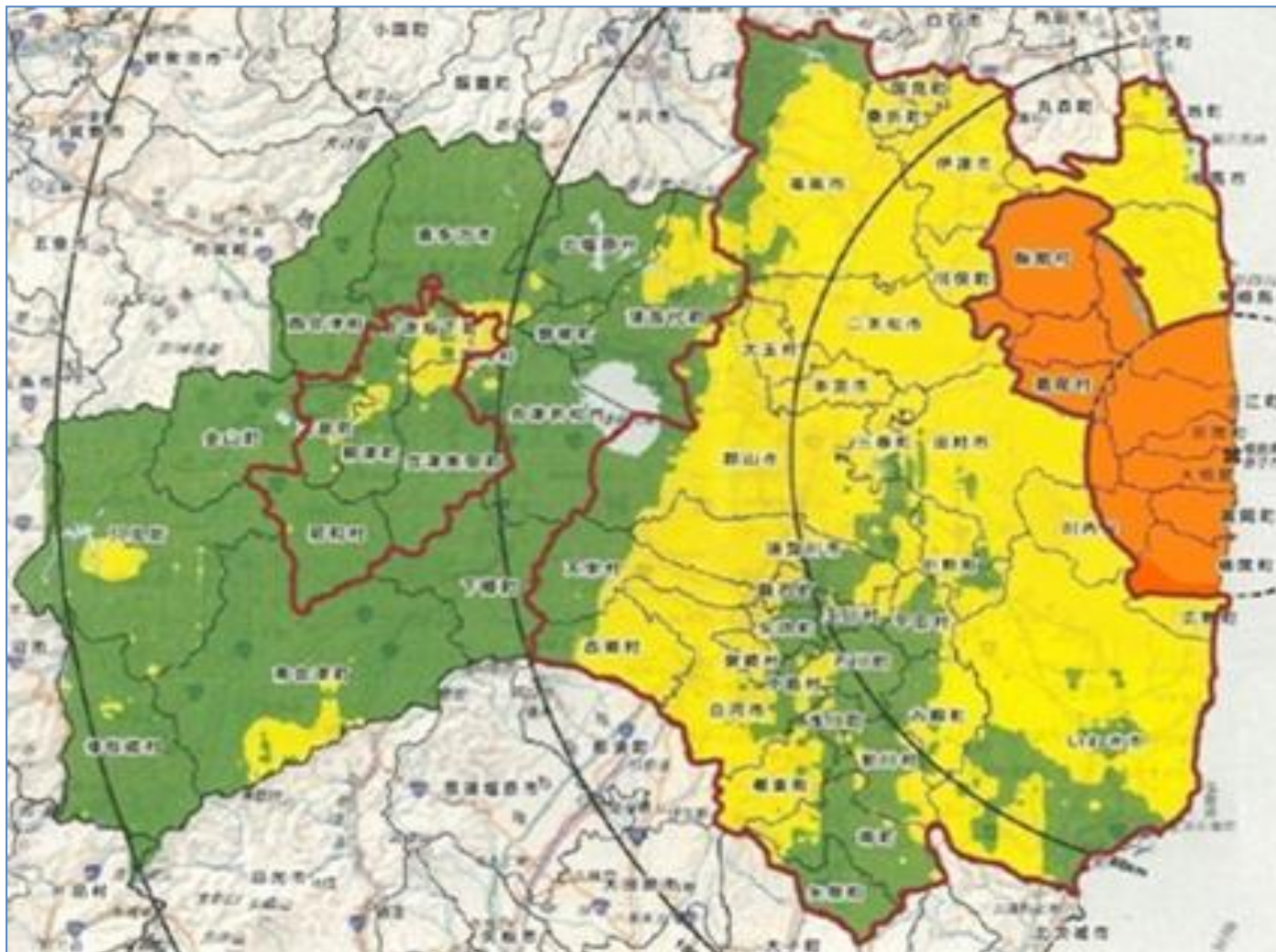
Town development for the revitalization of Tsunami-hit areas

Strengthening the cooperation and communication infrastructure that links Fukushima

● Establishing safe and secure living environments

Recovery of environment

Decontamination by the national government



**Distribution of
radiation dose**

**Restricted area
and deliberate
evacuation area**

1.0mSv ~

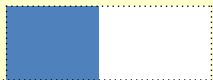
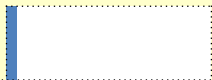



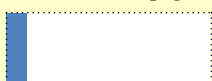


Below 1.0mSv

● Establishing safe and secure living environments

Recovery of environment

Status of decontamination process in the areas to be decontaminated among municipalities

(as of the end of October, 2012)

	Planned (A)	Ordered		Achievement	
		(B)	Rate of ordering (B/A)	(C)	Rate of achievement (C/A)
Housing (unit : household)	67,962	41,034	60.4% 	6,285	9.2% 
Public facilities (unit : facility)	3,206	3,099	96.7% 	2,460	76.7% 
Roads (unit : km)	3,432	1,910	55.7% 	403	11.7% 
Farm land (unit : ha) <Rice fields, farms, orchards and meadows>	25,677	19,704	76.7% 	12,179	47.4% 

※Objects surveyed include 41 municipalities designated as priority survey area on contamination level.

※Planned quantity refers to the accumulation by this year, and does not include unreleased municipalities.

● Establishing safe and secure living environments

Recovery of environment



Example of a roof being washed



Example of decontamination of agricultural land (reverse tillage)



Example of decontamination at a school (stripping of topsoil of the schoolyard)

● Establishing safe and secure living environments

Safety and security of primary products in the prefecture

Monitoring status of primary products in the prefecture

◆ Inspection of all rice in all rice bags



◆ Examination of radioactive materials in food brought in for testing

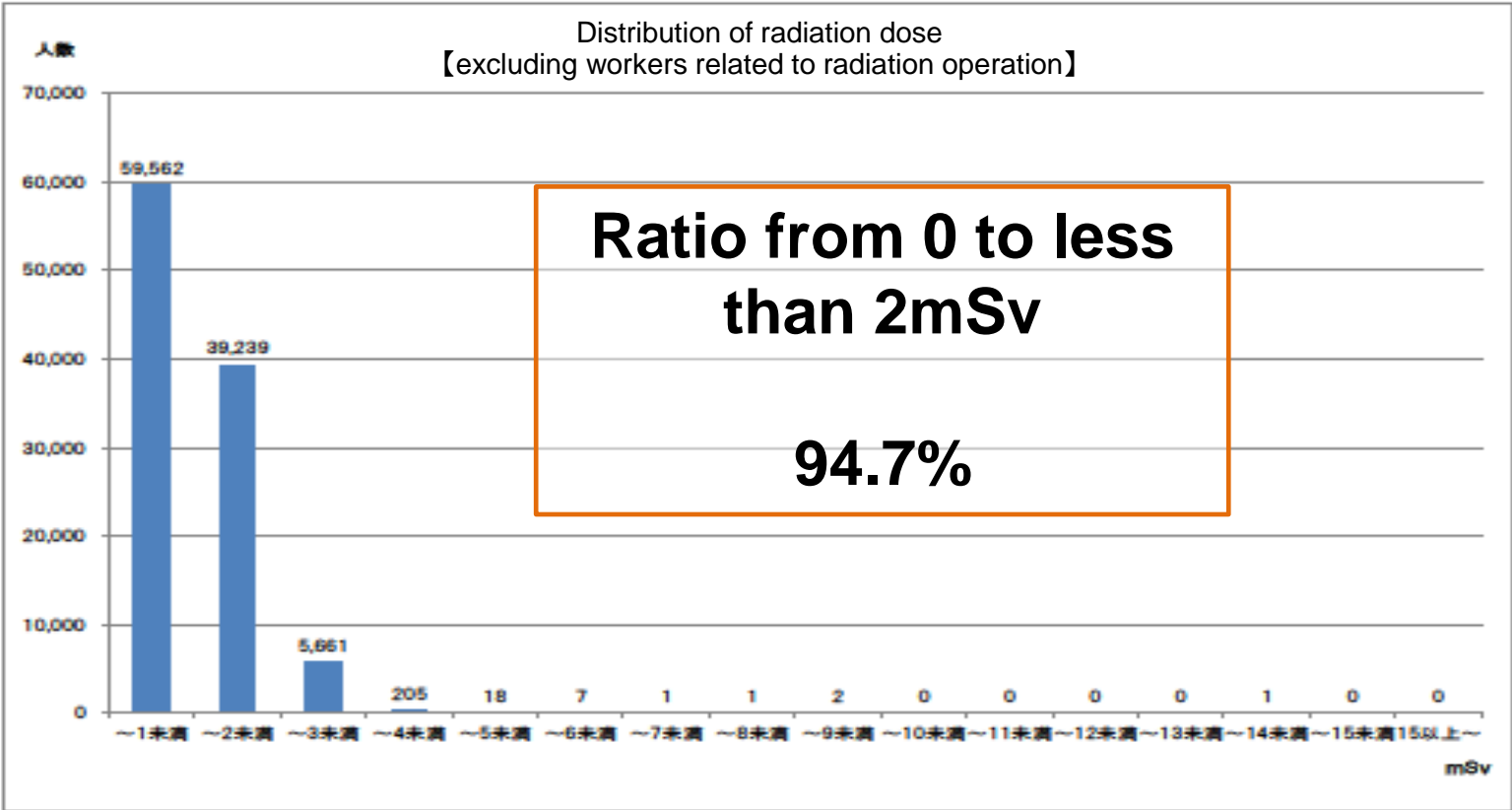


Health of citizens

Fukushima Health Management Survey

Basic survey→Rate of response 23.0%(as of Oct. 30, 2012)
(Respondents:473,841 persons/Those surveyed: 2,056,994 persons)

Result of estimate for external exposure dose【for whole prefecture】



● Establishing safe and secure living environments

Health of citizens

Fukushima Health Management Survey

Inspection of thyroid gland for persons of 18 years old or below → Completion rate: About 23.1%

**※Examinees 114,471 persons / Those eligible About 360,000 persons
(as of Nov. 1, 2012)**



Life-long inspection will be undertaken for citizens who were 0 to 18 years old at the time of the disaster.

Environmental Restoration and Sustainable Development Center (tentative)

We will develop research hubs to rapidly recover the environment contaminated by radioactive substances as well as create a beautiful and affluent environment where citizens are able to live with peace of mind in the future.

〈Other〉

We are examining the possibility of the development of a research hub for the recovery of agriculture in areas highly contaminated by radioactive substances.

●Revitalization status of industry

Development of hubs for R&D and industrial creation

Fukushima Global Medical Science Center

We are developing hubs for cutting edge research and therapy related to radiation medical practice in order to protect citizens' health over a long term in the future.

Medical equipment development center (tentative)

Establishing a hub to provide integrated support from the development stage of medical equipment products to the commercialization stage, the hub will also assess the safety of products using large animals first as well as conduct machine operation training for medical staff.



●Revitalization status of industry

Development of hubs for R&D and industrial creation

Research hub for renewable energy (tentative)

**The National Institute of Advanced Industrial Science and Technology (AIST is developing a hub for renewable energy research in Koriyama City).
(To be completed in 2013)**



●Revitalization status of industry

Development of hubs for R&D and industrial creation



<Ref>

Complete design of the offshore floating wind farm which is a demonstrative Research project occurring off the coast of Fukushima Prefecture. (provided by Marubeni)



Future From Fukushima

Concept contained in the slogan "Future From Fukushima".

Let each one of us start to step forward toward the revitalization!

And, let new movements start from Fukushima!

Fukushima is fully determined to recover from the great disaster and the nuclear accident no matter how hard it is.

The process of revitalizing Fukushima will show that it is possible to create a brand new society.

We want to make new waves from Fukushima.

The slogan, 'Future From Fukushima' will carry our strong will toward a brighter and more promising future.

