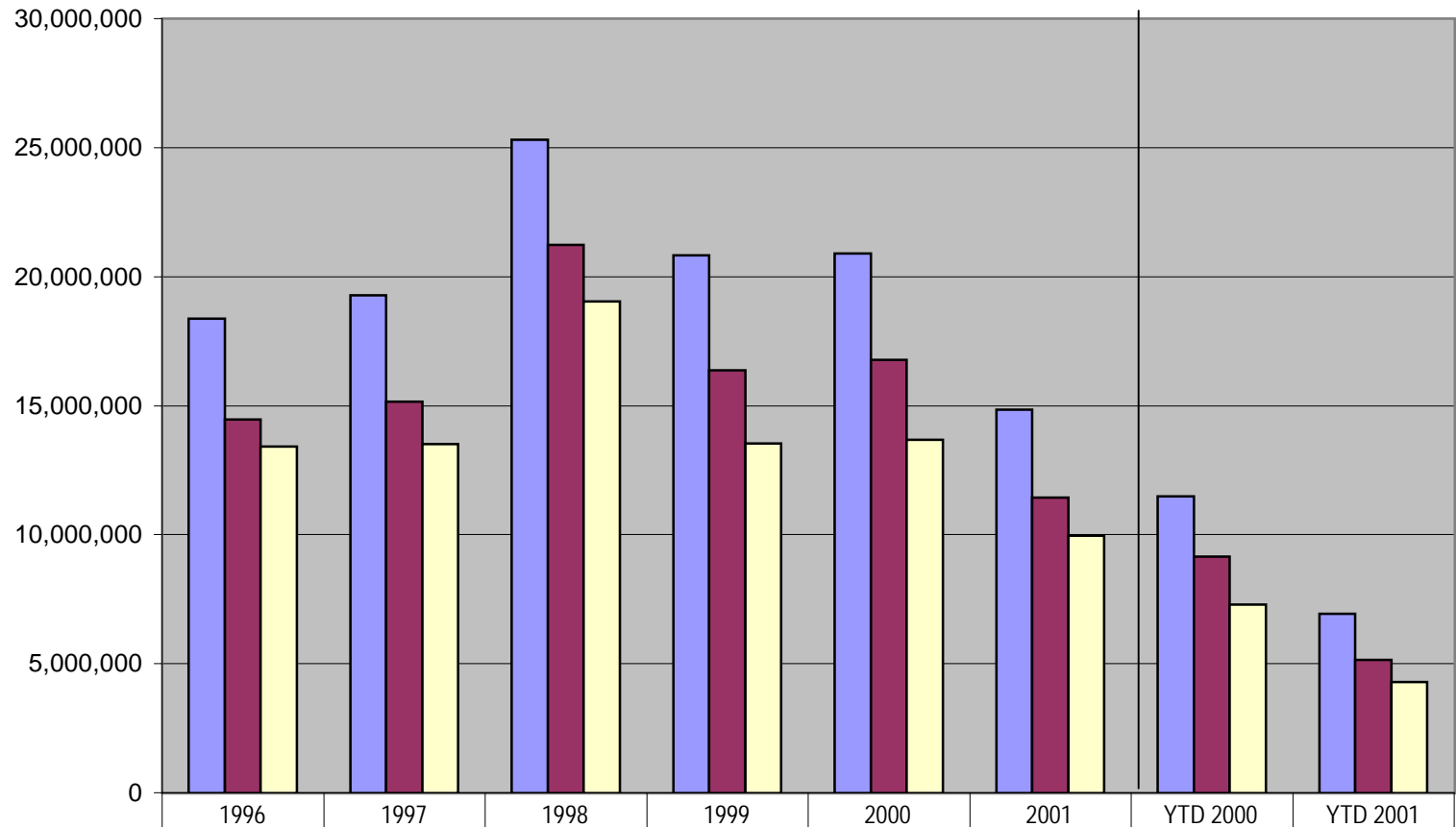


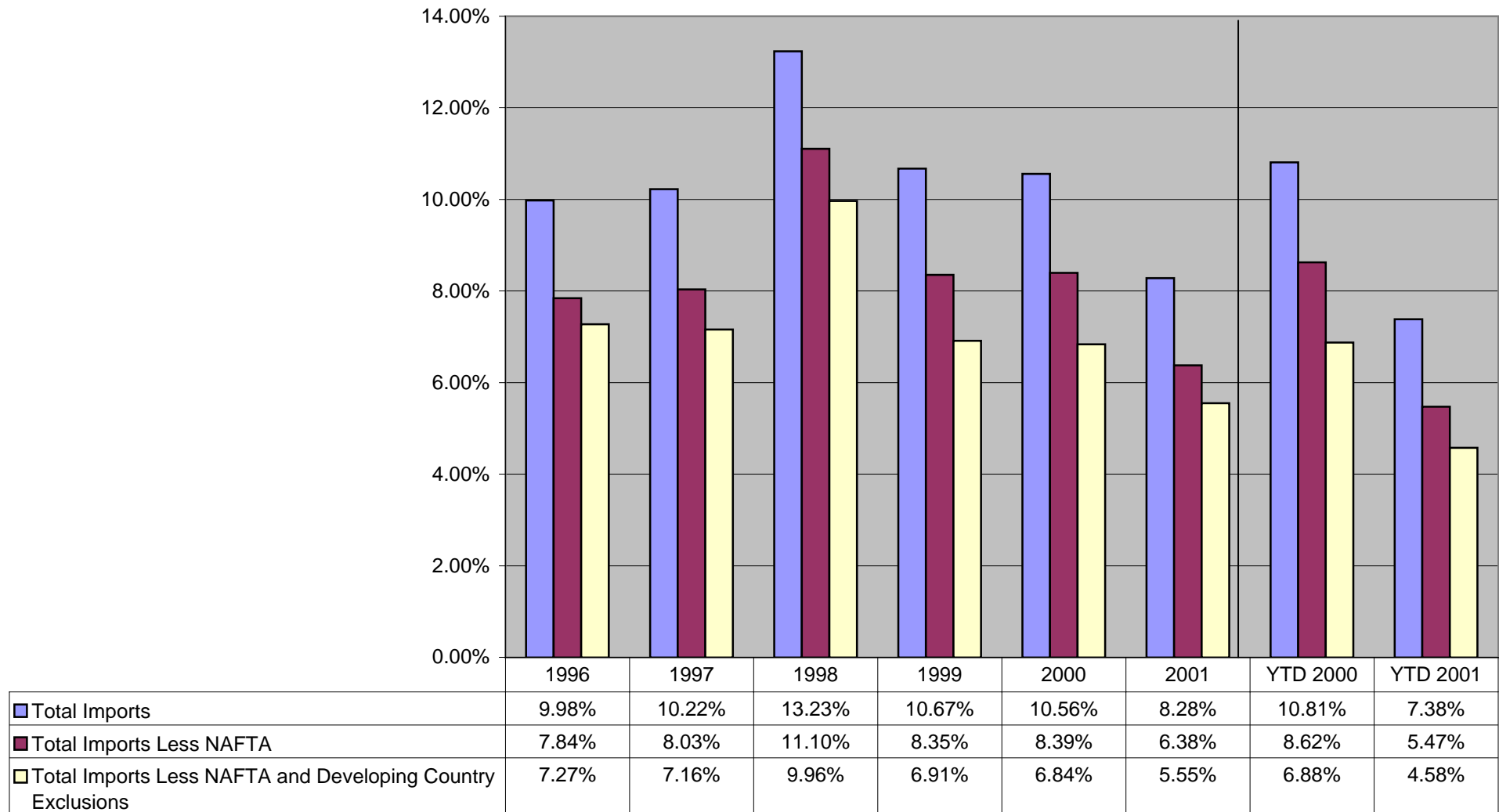
TOTAL FLAT-ROLLED IMPORTS (Aggregate of Slab, Plate, HR, CR, Coated)



| | | | | | | | | |
|--|------------|------------|------------|------------|------------|------------|------------|-----------|
| Total Imports | 18,371,530 | 19,273,898 | 25,304,506 | 20,816,465 | 20,893,327 | 14,852,984 | 11,482,561 | 6,929,591 |
| Total Imports Less NAFTA | 14,459,829 | 15,164,837 | 21,226,585 | 16,358,495 | 16,774,896 | 11,439,075 | 9,159,255 | 5,140,224 |
| Total Imports Less NAFTA and Developing Country Exclusions | 13,412,303 | 13,513,510 | 19,050,510 | 13,531,876 | 13,666,179 | 9,955,911 | 7,302,465 | 4,297,326 |

*YTD=Year-to-date through June for 2000 and 2001.
161076 Flat ITC Abs

U.S. Flat-Rolled Imports As a % of U.S. Production (as defined by the ITC)



Flat-Rolled Imports

| | 1996 | 1997 | 1998 | 1999 | 2000 | 2001 | YTD 2000 | YTD 2001 |
|---|-------------|-------------|-------------|-------------|-------------|-------------|-------------|------------|
| Total Imports | 9.98% | 10.22% | 13.23% | 10.67% | 10.56% | 8.28% | 10.81% | 7.38% |
| Total Imports Less NAFTA | 7.84% | 8.03% | 11.10% | 8.35% | 8.39% | 6.38% | 8.62% | 5.47% |
| Total Imports Less NAFTA and Developing Country Exclusions | 7.27% | 7.16% | 9.96% | 6.91% | 6.84% | 5.55% | 6.88% | 4.58% |
| Developing Country Exclusions | 0.57% | 0.87% | 1.14% | 1.44% | 1.56% | 0.83% | 1.75% | 0.90% |
| Production | 184,413,991 | 188,772,037 | 191,181,126 | 195,834,246 | 199,856,170 | 179,397,247 | 106,210,047 | 93,889,386 |
| Slab | 63,457,778 | 65,986,893 | 65,754,181 | 64,455,285 | 66,813,694 | 57,724,837 | 35,398,241 | 31,017,850 |
| Plate | 5,969,876 | 6,125,330 | 7,282,378 | 5,895,338 | 6,404,594 | 6,145,508 | 3,454,711 | 3,261,472 |
| Hot-Rolled | 63,476,549 | 65,111,144 | 63,644,097 | 67,034,929 | 68,231,538 | 63,865,635 | 36,534,368 | 33,217,812 |
| Cold-Rolled | 34,378,774 | 33,953,172 | 35,423,140 | 37,590,345 | 37,626,027 | 32,843,307 | 19,937,466 | 16,942,813 |
| Coated | 17,131,014 | 17,595,498 | 19,077,330 | 20,858,349 | 20,789,317 | 18,817,961 | 10,885,261 | 9,449,439 |
| Total Imports | 18,371,530 | 19,273,898 | 25,304,506 | 20,816,465 | 20,893,327 | 14,852,984 | 11,482,561 | 6,929,591 |
| Slab | 6,297,405 | 5,416,372 | 5,351,647 | 7,368,076 | 7,259,814 | 5,673,896 | 4,096,148 | 2,374,030 |
| Plate | 1,937,357 | 1,377,884 | 2,113,920 | 894,981 | 950,768 | 910,572 | 398,167 | 387,134 |
| Hot-Rolled | 5,265,087 | 6,517,301 | 11,497,355 | 6,518,444 | 7,459,644 | 3,147,005 | 4,429,538 | 1,759,659 |
| Cold-Rolled | 2,591,374 | 3,581,299 | 4,045,356 | 3,376,396 | 2,763,774 | 3,080,583 | 1,282,032 | 1,426,055 |
| Coated | 2,280,307 | 2,381,043 | 2,296,228 | 2,658,569 | 2,459,329 | 2,040,929 | 1,276,676 | 982,714 |
| Total Imports Less NAFTA | 14,459,829 | 15,164,837 | 21,226,585 | 16,358,495 | 16,774,896 | 11,439,075 | 9,159,255 | 5,140,224 |
| Total Imports Less NAFTA and Developing Country Exclusions | 13,412,303 | 13,513,510 | 19,050,510 | 13,531,876 | 13,666,179 | 9,955,911 | 7,302,465 | 4,297,326 |
| Developing Country Exclusions | 1,047,526 | 1,651,327 | 2,176,075 | 2,826,619 | 3,108,717 | 1,483,164 | 1,856,790 | 842,898 |

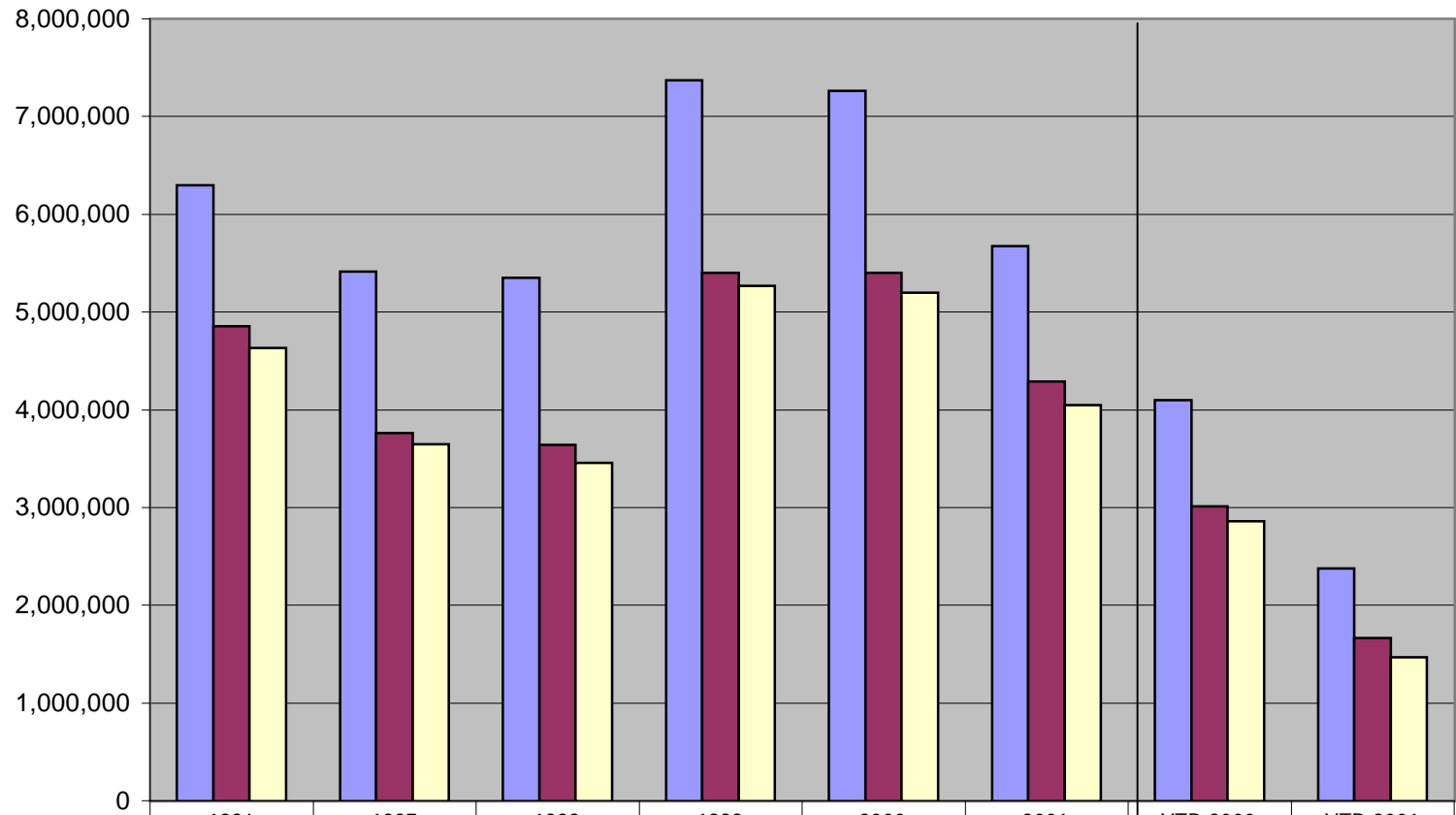
Data from Table: Flat 3 - Flat 10

2001 Production Estimated by using the % change in commercial shipments (domestic and export, as reported by AISI) from first half 2001 to second half 2001 to approximate the % change in production in the second half of 2001:

Year 2001 = (First Half 2001 Production)+((1+% Change in Shipments from 1st Half 2001)*First Half 2001 Production)

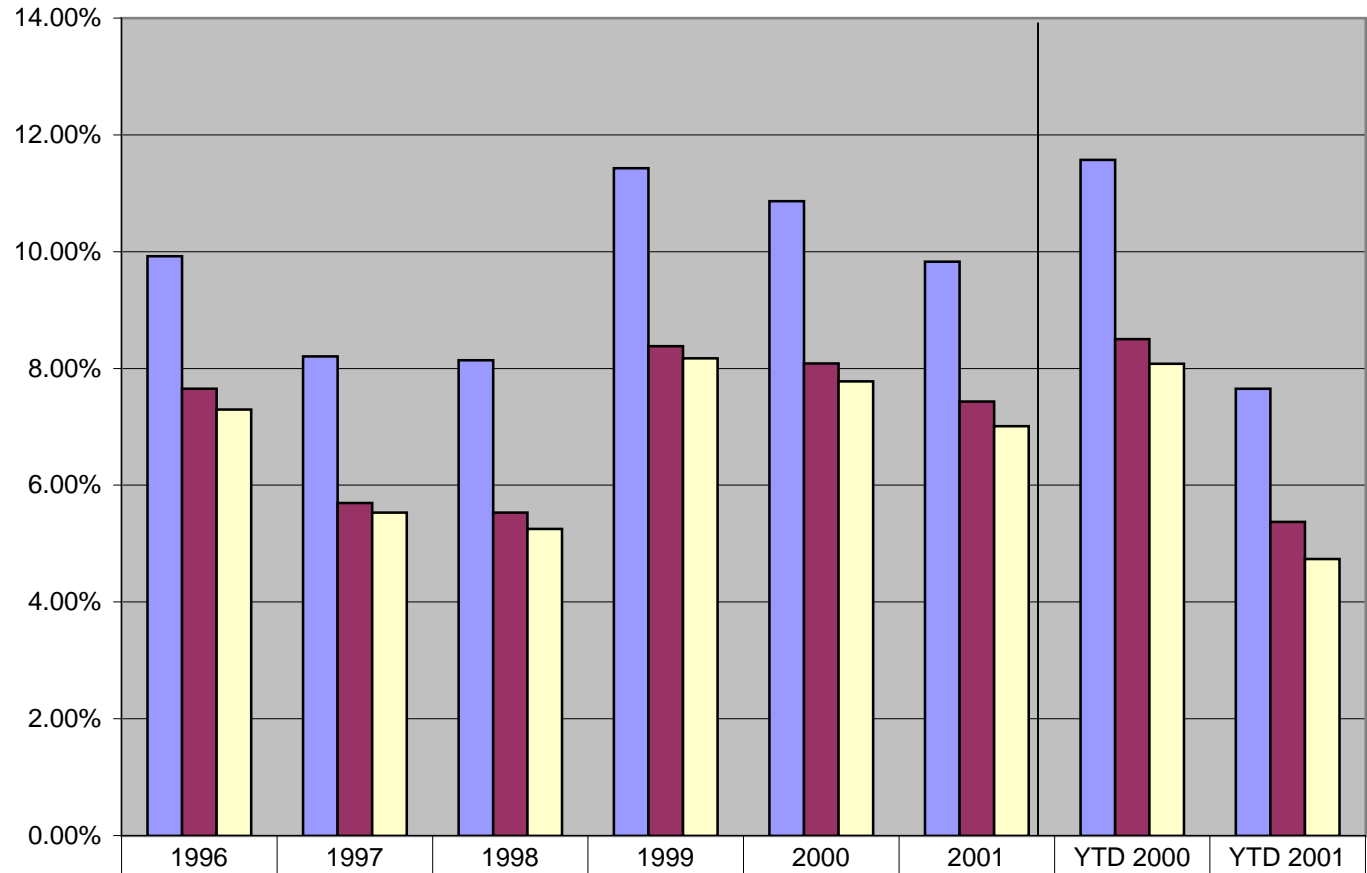
For Developing Country Status, see product-specific charts.

TOTAL SLAB IMPORTS



| | | | | | | | | |
|--|-----------|-----------|-----------|-----------|-----------|-----------|-----------|-----------|
| Total Imports | 6,297,405 | 5,416,372 | 5,351,647 | 7,368,076 | 7,259,814 | 5,673,896 | 4,096,148 | 2,374,030 |
| Total Imports Less NAFTA | 4,854,305 | 3,758,875 | 3,638,138 | 5,403,797 | 5,402,490 | 4,290,580 | 3,008,748 | 1,666,092 |
| Total Imports Less NAFTA and Developing Country Exclusions | 4,631,098 | 3,648,695 | 3,454,101 | 5,269,087 | 5,196,179 | 4,047,728 | 2,860,908 | 1,469,648 |

U.S. Slab Imports As a % of U.S. Production (as defined by the ITC)



| | | | | | | | | |
|--|-------|-------|-------|--------|--------|-------|--------|-------|
| Total Imports | 9.92% | 8.21% | 8.14% | 11.43% | 10.87% | 9.83% | 11.57% | 7.65% |
| Total Imports Less NAFTA | 7.65% | 5.70% | 5.53% | 8.38% | 8.09% | 7.43% | 8.50% | 5.37% |
| Total Imports Less NAFTA and Developing Country Exclusions | 7.30% | 5.53% | 5.25% | 8.17% | 7.78% | 7.01% | 8.08% | 4.74% |

Slab Imports

| | 1996 | 1997 | 1998 | 1999 | 2000 | 2001 | YTD 2000 | YTD 2001 |
|---|------------|------------|------------|------------|------------|------------|------------|------------|
| Total Imports | 9.92% | 8.21% | 8.14% | 11.43% | 10.87% | 9.83% | 11.57% | 7.65% |
| Total Imports Less NAFTA | 7.65% | 5.70% | 5.53% | 8.38% | 8.09% | 7.43% | 8.50% | 5.37% |
| Total Imports Less NAFTA and Developing Country Exclusions | 7.30% | 5.53% | 5.25% | 8.17% | 7.78% | 7.01% | 8.08% | 4.74% |
| Developing Country Exclusions | 0.35% | 0.17% | 0.28% | 0.21% | 0.31% | 0.42% | 0.42% | 0.63% |
| Production | 63,457,778 | 65,986,893 | 65,754,181 | 64,455,285 | 66,813,694 | 57,724,837 | 35,398,241 | 31,017,850 |
| Total Imports | 6,297,405 | 5,416,372 | 5,351,647 | 7,368,076 | 7,259,814 | 5,673,896 | 4,096,148 | 2,374,030 |
| Total Imports Less NAFTA | 4,854,305 | 3,758,875 | 3,638,138 | 5,403,797 | 5,402,490 | 4,290,580 | 3,008,748 | 1,666,092 |
| Total Imports Less NAFTA and Developing Country Exclusions | 4,631,098 | 3,648,695 | 3,454,101 | 5,269,087 | 5,196,179 | 4,047,728 | 2,860,908 | 1,469,648 |
| Developing Country Exclusions | 223,206 | 110,180 | 184,035 | 134,712 | 206,310 | 242,852 | 147,840 | 196,443 |

Data from Table: Flat 3 - Flat 10

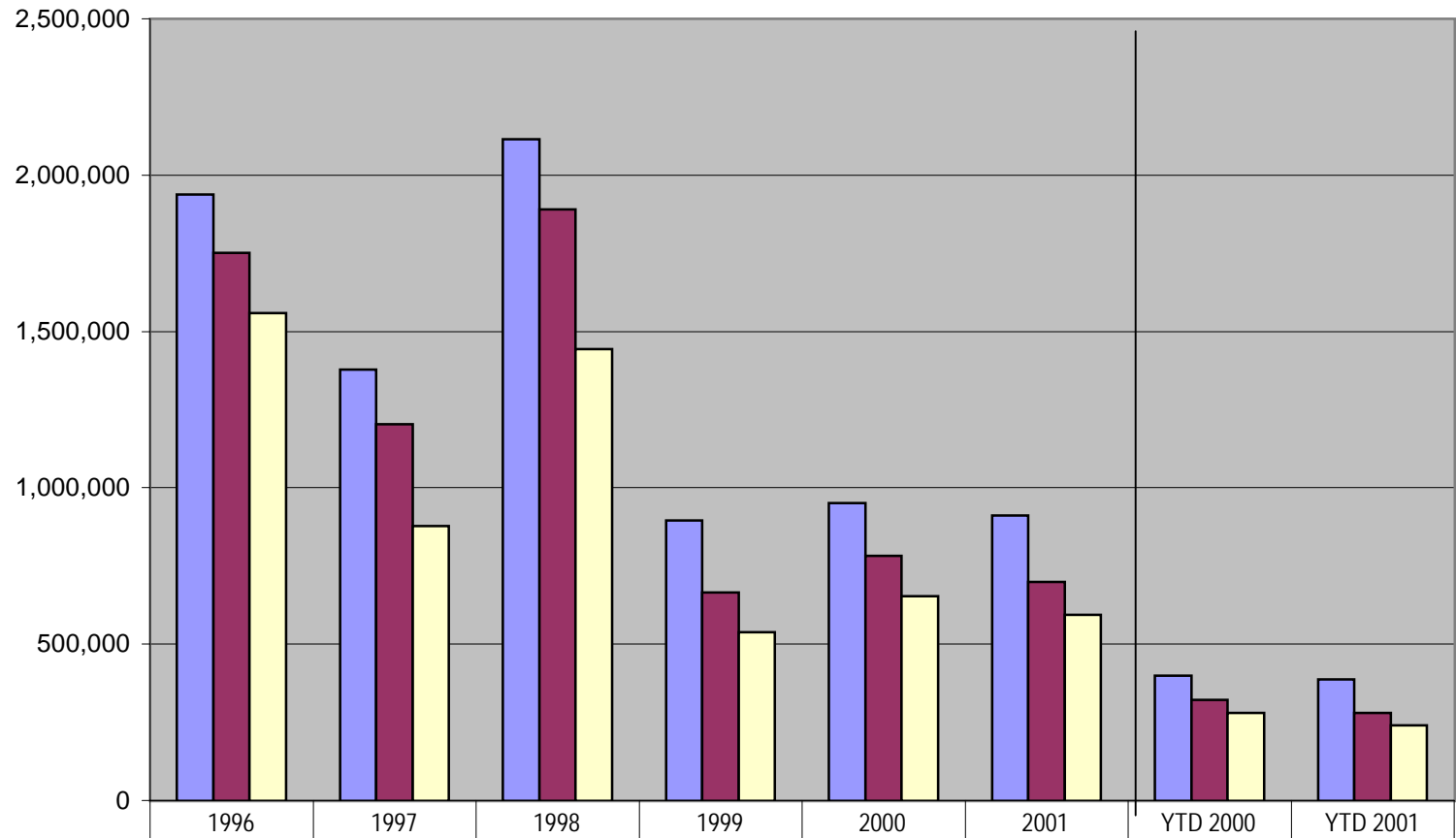
2001 Production Estimated by using the % change in commercial shipments (domestic and export, as reported by AISI) from first half 2001 to second half 2001 to approximate the % to approximate the % change in production in the second half of 2001:

Year 2001 = (First Half 2001 Production)+((1+% Change in Shipments from 1st Half 2001)*First Half 2001 Production)

Developing Country Exclusions

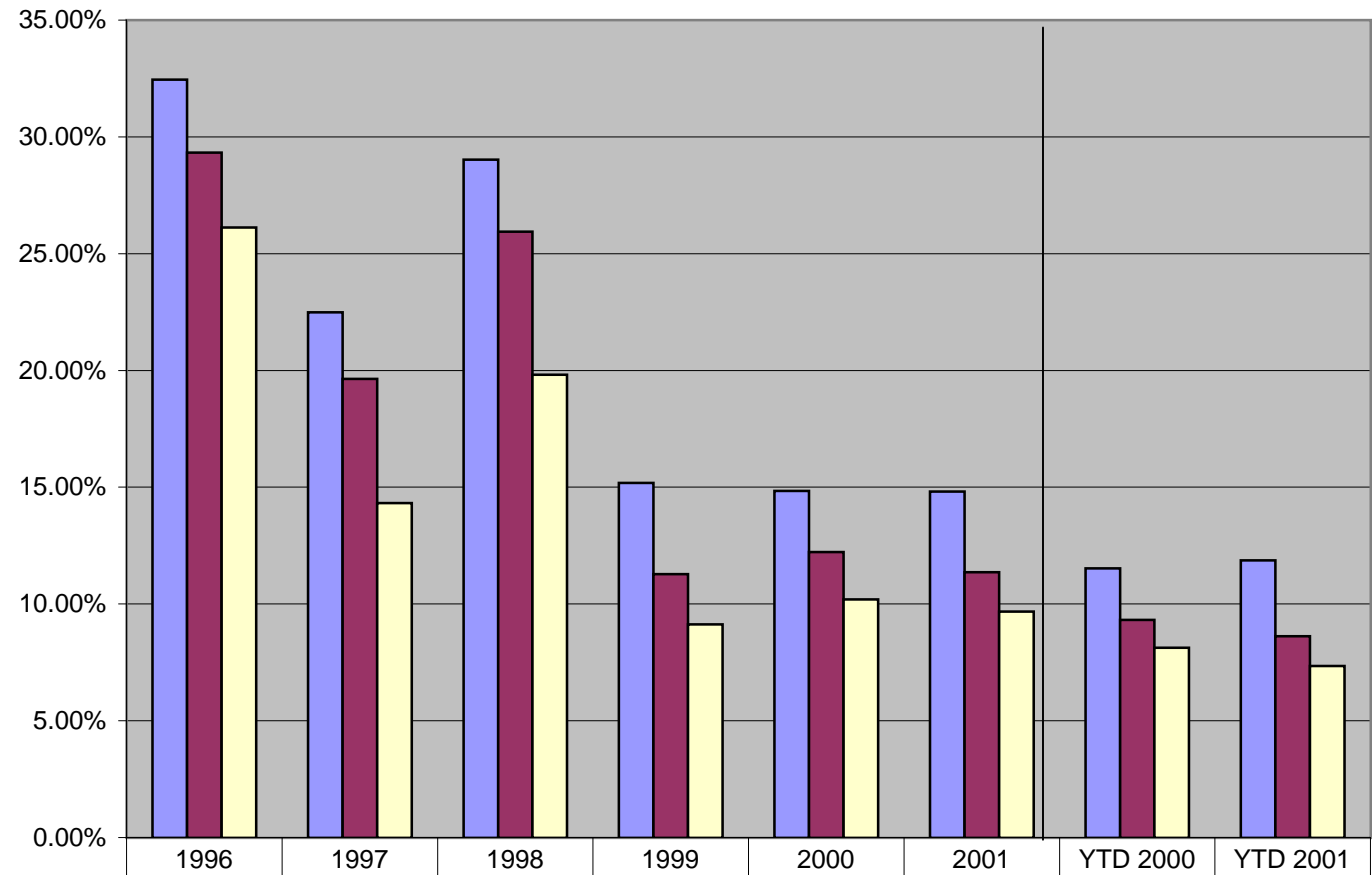
| | | | | | | | |
|-----------------|-----------------|---------------|-----------|-----------|----------|--------------|---------------|
| Albania | Cameroon | Dominica Is | Guatemala | Jamaica | Moldova | Philippines | Sri Lanka |
| Antigua Barbuda | Cen African Rep | Dominican Rep | Guinea | Jordan | Namibia | Poland | St Lucia Is |
| Argentina | Chile | Ecuador | Guyana | Kenya | Niger | Romania | Thailand |
| Bahrain | Colombia | Egypt | Haiti | Kyrgystan | Oman | Sierra Leone | Trin & Tobago |
| Bangladesh | Costa Rica | El Salvador | Honduras | Latvia | Pakistan | Senegal | Tunisia |
| Belize | Cote d'Ivoire | Estonia | Hungary | Lithuania | Panama | Slovakia | Turkey |
| Bolivia | Croatia | Georgia | India | Mali | Paraguay | South Africa | Venezuela |
| Bulgaria | Czech Republic | Gabon | Indonesia | Mauritius | Peru | Swaziland | Zimbabwe |

TOTAL PLATE IMPORTS



| | | | | | | | | |
|--|-----------|-----------|-----------|---------|---------|---------|---------|---------|
| Total Imports | 1,937,357 | 1,377,884 | 2,113,920 | 894,981 | 950,768 | 910,572 | 398,167 | 387,134 |
| Total Imports Less NAFTA | 1,750,947 | 1,202,508 | 1,889,545 | 665,293 | 782,845 | 698,574 | 321,834 | 280,918 |
| Total Imports Less NAFTA and Developing Country Exclusions | 1,559,139 | 877,580 | 1,442,832 | 538,097 | 652,805 | 594,699 | 280,577 | 239,514 |

U.S. Plate Imports As a % of U.S. Production (as defined by the ITC)



| | | | | | | | | |
|--|--------|--------|--------|--------|--------|--------|--------|--------|
| Total Imports | 32.45% | 22.49% | 29.03% | 15.18% | 14.85% | 14.82% | 11.53% | 11.87% |
| Total Imports Less NAFTA | 29.33% | 19.63% | 25.95% | 11.29% | 12.22% | 11.37% | 9.32% | 8.61% |
| Total Imports Less NAFTA and Developing Country Exclusions | 26.12% | 14.33% | 19.81% | 9.13% | 10.19% | 9.68% | 8.12% | 7.34% |

Plate Imports

| | 1996 | 1997 | 1998 | 1999 | 2000 | 2001 | YTD 2000 | YTD 2001 |
|---|-----------|-----------|-----------|-----------|-----------|-----------|-----------|-----------|
| Total Imports | 32.45% | 22.49% | 29.03% | 15.18% | 14.85% | 14.82% | 11.53% | 11.87% |
| Total Imports Less NAFTA | 29.33% | 19.63% | 25.95% | 11.29% | 12.22% | 11.37% | 9.32% | 8.61% |
| Total Imports Less NAFTA and Developing Country Exclusions | 26.12% | 14.33% | 19.81% | 9.13% | 10.19% | 9.68% | 8.12% | 7.34% |
| Developing Country Exclusions | 3.21% | 5.30% | 6.13% | 2.16% | 2.03% | 1.69% | 1.19% | 1.27% |
| Production | 5,969,876 | 6,125,330 | 7,282,378 | 5,895,338 | 6,404,594 | 6,145,508 | 3,454,711 | 3,261,472 |
| Total Imports | 1,937,357 | 1,377,884 | 2,113,920 | 894,981 | 950,768 | 910,572 | 398,167 | 387,134 |
| Total Imports Less NAFTA | 1,750,947 | 1,202,508 | 1,889,545 | 665,293 | 782,845 | 698,574 | 321,834 | 280,918 |
| Total Imports Less NAFTA and Developing Country Exclusions | 1,559,139 | 877,580 | 1,442,832 | 538,097 | 652,805 | 594,699 | 280,577 | 239,514 |
| Developing Country Exclusions | 191,809 | 324,929 | 446,711 | 127,193 | 130,036 | 103,875 | 41,258 | 41,402 |

Data from Table: Flat 3 - Flat 10

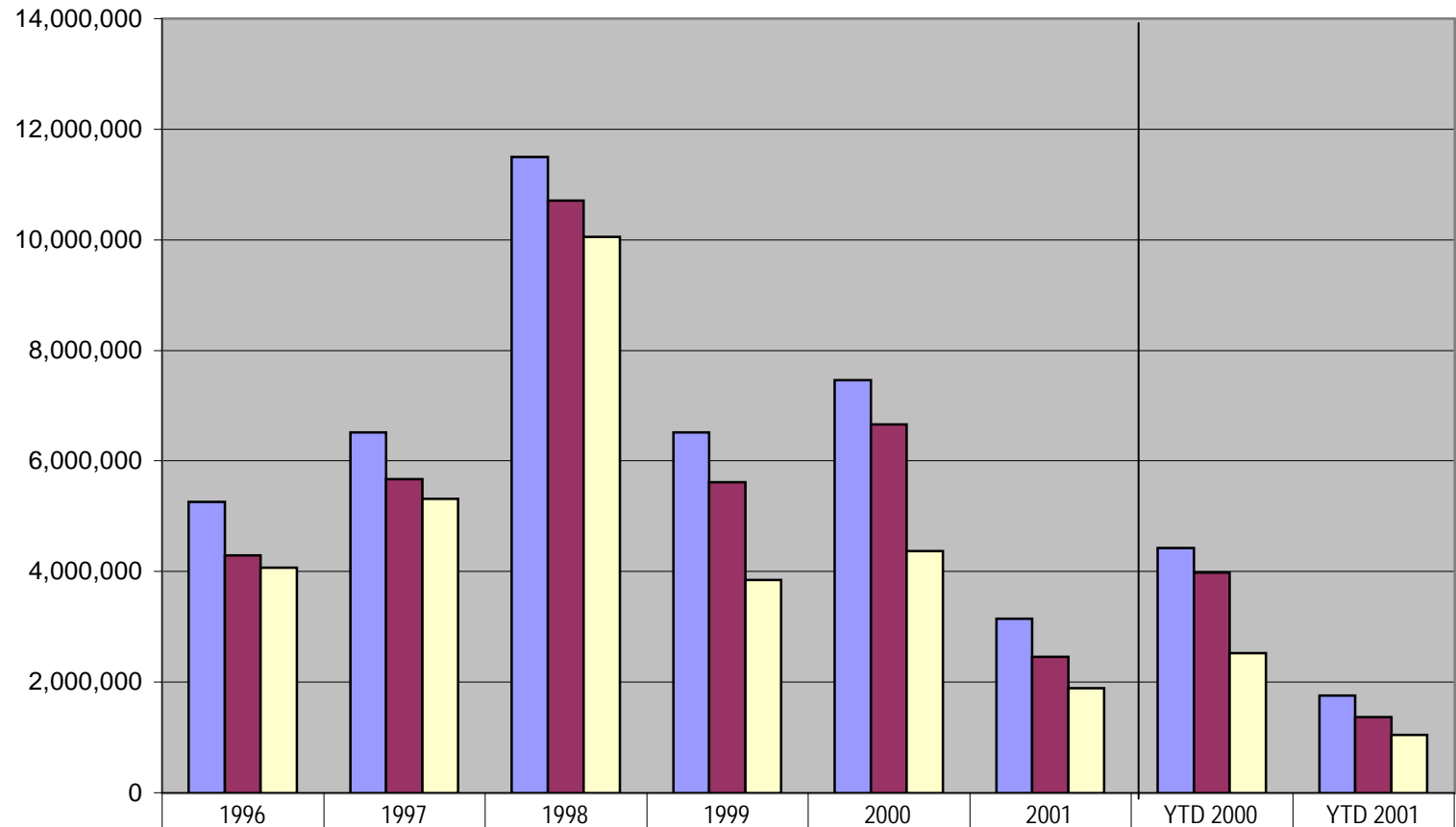
2001 Production Estimated by using the % change in commercial shipments (domestic and export, as reported by AISI) from first half 2001 to second to approximate the % change in production in the second half of 2001:

Year 2001 = (First Half 2001 Production)+((1+% Change in Shipments from 1st Half 2001)*First Half 2001 Production)

Developing Country Exclusions

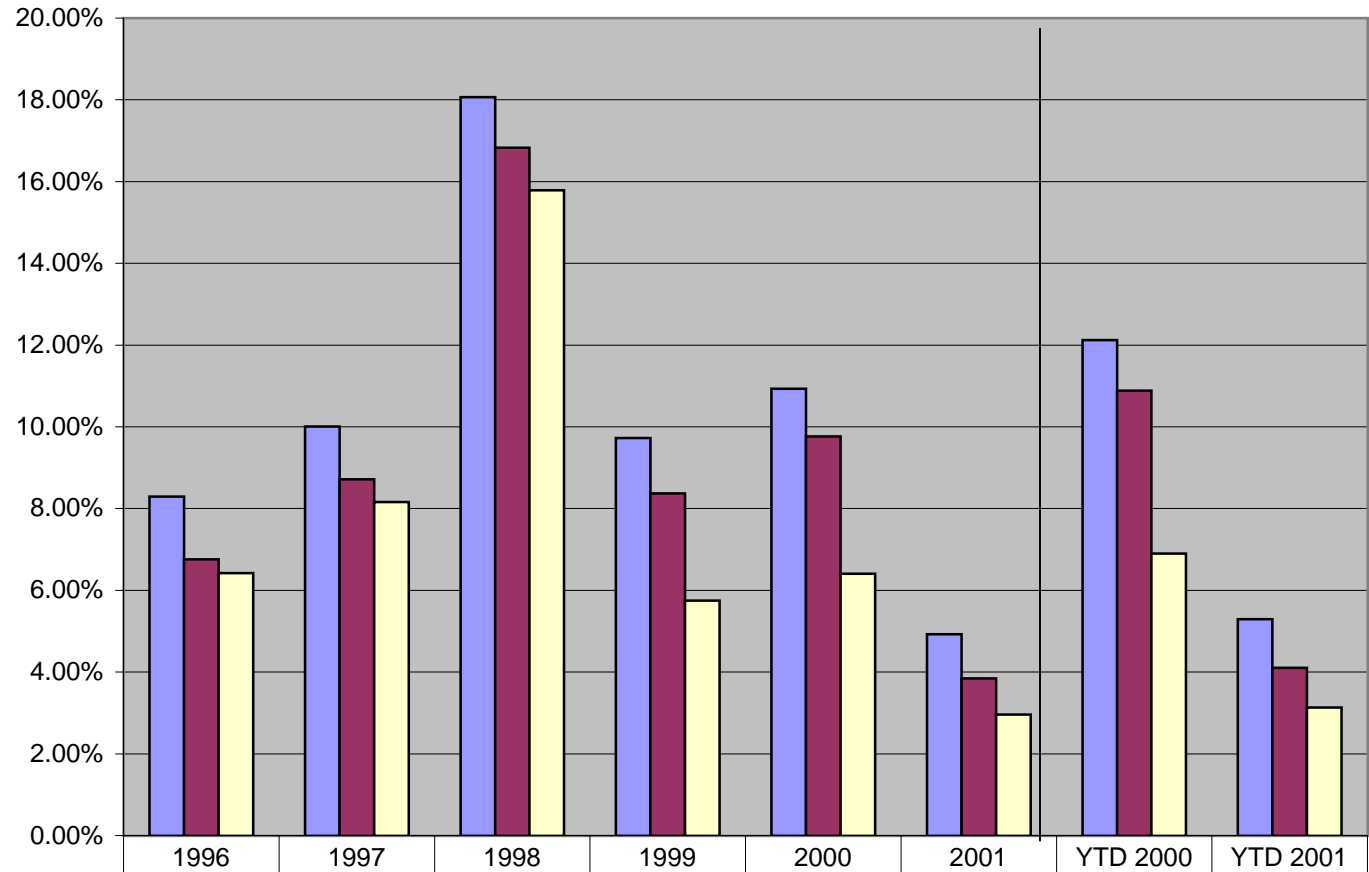
| | | | | | | | |
|-----------------|---------------|--------------|-----------|-----------|----------|--------------|---------------|
| Albania | Cameroon | Dominica Is | Guatemala | Jamaica | Moldova | Philippines | Sri Lanka |
| Antigua Barbuda | Cen African R | Dominican Re | Guinea | Jordan | Namibia | Poland | St Lucia Is |
| Argentina | Chile | Ecuador | Guyana | Kenya | Niger | Romania | Thailand |
| Bahrain | Colombia | Egypt | Haiti | Kyrgystan | Oman | Sierra Leone | Trin & Tobago |
| Bangladesh | Costa Rica | El Salvador | Honduras | Latvia | Pakistan | Senegal | Tunisia |
| Belize | Cote d'Ivoire | Estonia | Hungary | Lithuania | Panama | Slovakia | Turkey |
| Bolivia | Croatia | Georgia | India | Mali | Paraguay | South Africa | Venezuela |
| Bulgaria | Czech Republi | Gabon | Indonesia | Mauritius | Peru | Swaziland | Zimbabwe |

TOTAL HOT-ROLLED IMPORTS



| | | | | | | | | |
|--|-----------|-----------|------------|-----------|-----------|-----------|-----------|-----------|
| Total Imports | 5,265,087 | 6,517,301 | 11,497,355 | 6,518,444 | 7,459,644 | 3,147,005 | 4,429,538 | 1,759,659 |
| Total Imports Less NAFTA | 4,291,030 | 5,673,945 | 10,708,033 | 5,610,258 | 6,664,289 | 2,455,577 | 3,977,260 | 1,362,547 |
| Total Imports Less NAFTA and Developing Country Exclusions | 4,074,469 | 5,311,560 | 10,048,799 | 3,850,494 | 4,372,305 | 1,891,705 | 2,520,731 | 1,041,701 |

U.S. Hot-Rolled Imports As a % of U.S. Production (as defined by the ITC)



| | | | | | | | | |
|--|-------|--------|--------|-------|--------|-------|--------|-------|
| Total Imports | 8.29% | 10.01% | 18.07% | 9.72% | 10.93% | 4.93% | 12.12% | 5.30% |
| Total Imports Less NAFTA | 6.76% | 8.71% | 16.82% | 8.37% | 9.77% | 3.84% | 10.89% | 4.10% |
| Total Imports Less NAFTA and Developing Country Exclusions | 6.42% | 8.16% | 15.79% | 5.74% | 6.41% | 2.96% | 6.90% | 3.14% |

Hot-Rolled Imports

| | 1996 | 1997 | 1998 | 1999 | 2000 | 2001 | YTD 2000 | YTD 2001 |
|---|------------|------------|------------|------------|------------|------------|------------|------------|
| Total Imports | 8.29% | 10.01% | 18.07% | 9.72% | 10.93% | 4.93% | 12.12% | 5.30% |
| Total Imports Less NAFTA | 6.76% | 8.71% | 16.82% | 8.37% | 9.77% | 3.84% | 10.89% | 4.10% |
| Total Imports Less NAFTA and Developing Country Exclusions | 6.42% | 8.16% | 15.79% | 5.74% | 6.41% | 2.96% | 6.90% | 3.14% |
| Developing Country Exclusions | 0.34% | 0.56% | 1.04% | 2.63% | 3.36% | 0.89% | 3.99% | 0.97% |
| Production | 63,476,549 | 65,111,144 | 63,644,097 | 67,034,929 | 68,231,538 | 63,865,635 | 36,534,368 | 33,217,812 |
| Total Imports | 5,265,087 | 6,517,301 | 11,497,355 | 6,518,444 | 7,459,644 | 3,147,005 | 4,429,538 | 1,759,659 |
| Total Imports Less NAFTA | 4,291,030 | 5,673,945 | 10,708,033 | 5,610,258 | 6,664,289 | 2,455,577 | 3,977,260 | 1,362,547 |
| Total Imports Less NAFTA and Developing Country Exclusions | 4,074,469 | 5,311,560 | 10,048,799 | 3,850,494 | 4,372,305 | 1,891,705 | 2,520,731 | 1,041,701 |
| Developing Country Exclusions | 216,559 | 362,385 | 659,237 | 1,759,765 | 2,291,984 | 568,872 | 1,456,528 | 320,848 |

Data from Table: Flat 3 - Flat 10

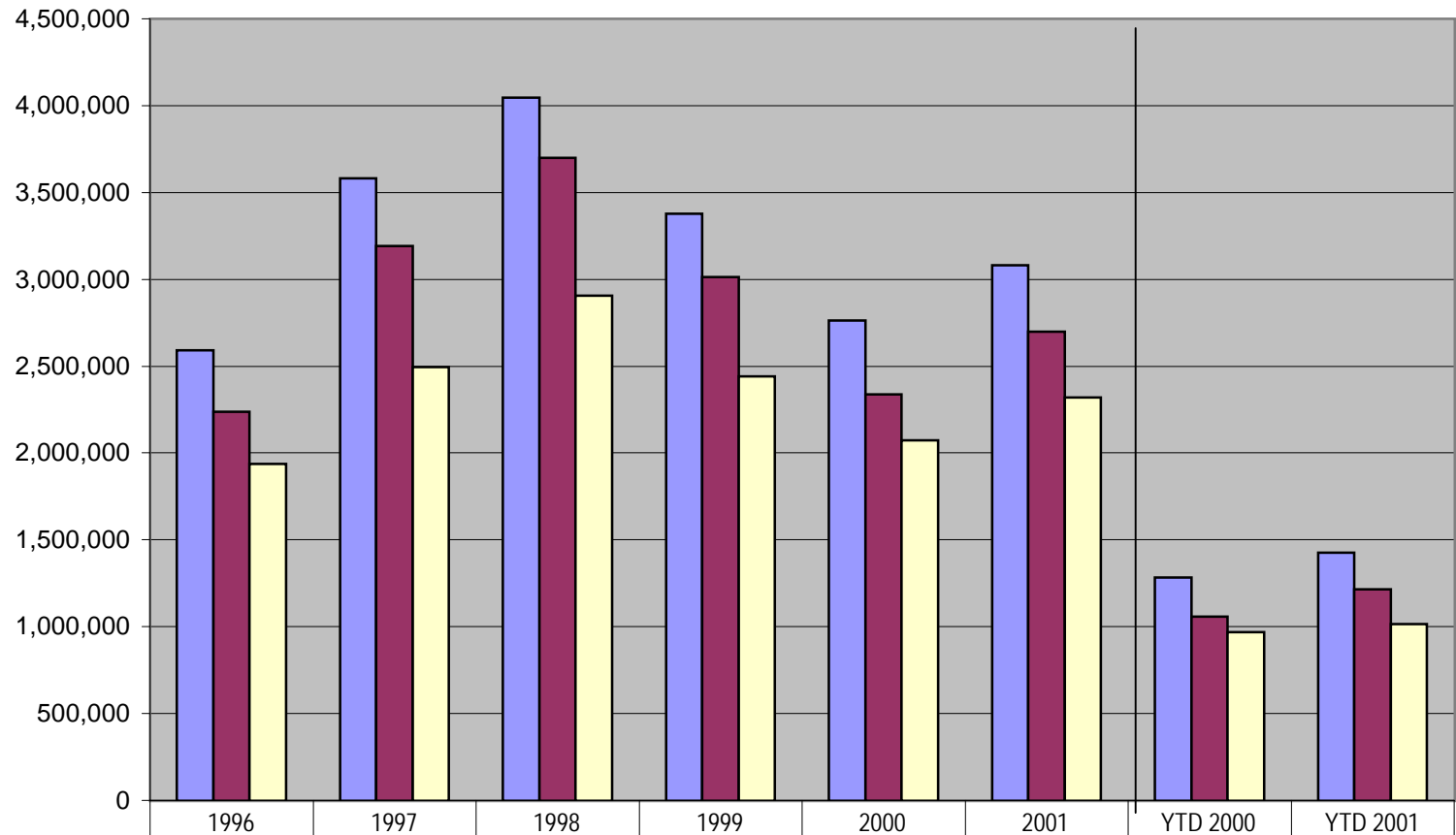
2001 Production Estimated by using the % change in commercial shipments (domestic and export, as reported by AISI) from first half 2001 to second to approximate the % change in production in the second half of 2001:

Year 2001 = (First Half 2001 Production)+((1+% Change in Shipments from 1st Half 2001)*First Half 2001 Production)

Developing Country Exclusions

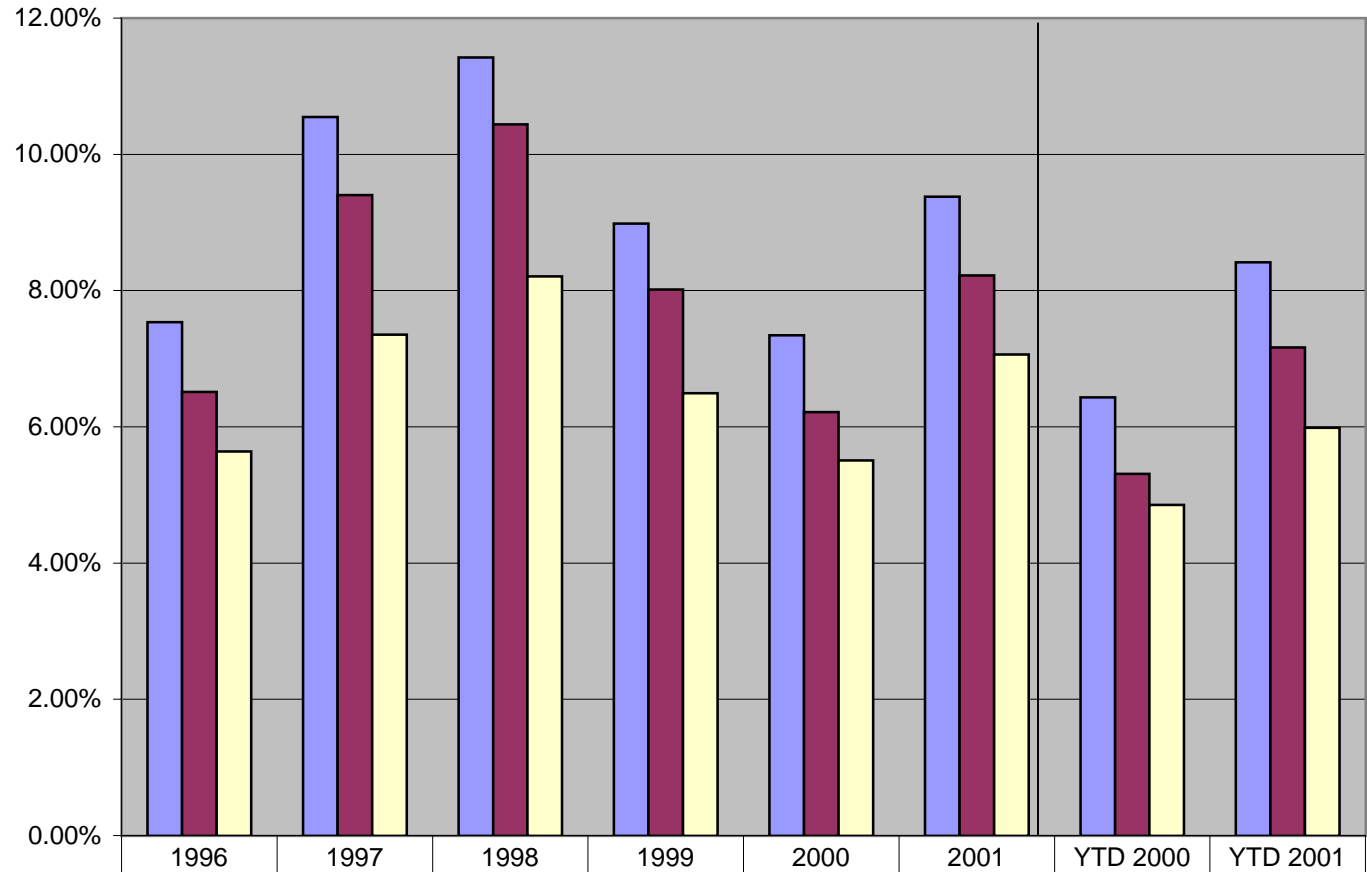
| | | | | | | | |
|-----------------|---------------|--------------|-----------|-----------|----------|--------------|---------------|
| Albania | Cameroon | Dominica Is | Guatemala | Jamaica | Moldova | Philippines | Sri Lanka |
| Antigua Barbuda | Cen African R | Dominican Re | Guinea | Jordan | Namibia | Poland | St Lucia Is |
| Argentina | Chile | Ecuador | Guyana | Kenya | Niger | Romania | Thailand |
| Bahrain | Colombia | Egypt | Haiti | Kyrgystan | Oman | Sierra Leone | Trin & Tobago |
| Bangladesh | Costa Rica | El Salvador | Honduras | Latvia | Pakistan | Senegal | Tunisia |
| Belize | Cote d'Ivoire | Estonia | Hungary | Lithuania | Panama | Slovakia | Turkey |
| Bolivia | Croatia | Georgia | India | Mali | Paraguay | South Africa | Venezuela |
| Bulgaria | Czech Republi | Gabon | Indonesia | Mauritius | Peru | Swaziland | Zimbabwe |

TOTAL COLD-ROLLED IMPORTS



| | | | | | | | | |
|--|-----------|-----------|-----------|-----------|-----------|-----------|-----------|-----------|
| Total Imports | 2,591,374 | 3,581,299 | 4,045,356 | 3,376,396 | 2,763,774 | 3,080,583 | 1,282,032 | 1,426,055 |
| Total Imports Less NAFTA | 2,238,969 | 3,192,071 | 3,698,877 | 3,012,422 | 2,338,379 | 2,700,230 | 1,058,950 | 1,213,645 |
| Total Imports Less NAFTA and Developing Country Exclusions | 1,938,643 | 2,496,610 | 2,906,939 | 2,440,685 | 2,071,792 | 2,319,278 | 967,710 | 1,014,553 |

U.S. Cold-Rolled Imports As a % of U.S. Production (as defined by the ITC)



| | | | | | | | | |
|--|-------|--------|--------|-------|-------|-------|-------|-------|
| Total Imports | 7.54% | 10.55% | 11.42% | 8.98% | 7.35% | 9.38% | 6.43% | 8.42% |
| Total Imports Less NAFTA | 6.51% | 9.40% | 10.44% | 8.01% | 6.21% | 8.22% | 5.31% | 7.16% |
| Total Imports Less NAFTA and Developing Country Exclusions | 5.64% | 7.35% | 8.21% | 6.49% | 5.51% | 7.06% | 4.85% | 5.99% |

Cold-Rolled Imports

| | 1996 | 1997 | 1998 | 1999 | 2000 | 2001 | YTD 2000 | YTD 2001 |
|---|------------|------------|------------|------------|------------|------------|------------|------------|
| Total Imports | 7.54% | 10.55% | 11.42% | 8.98% | 7.35% | 9.38% | 6.43% | 8.42% |
| Total Imports Less NAFTA | 6.51% | 9.40% | 10.44% | 8.01% | 6.21% | 8.22% | 5.31% | 7.16% |
| Total Imports Less NAFTA and Developing Country Exclusions | 5.64% | 7.35% | 8.21% | 6.49% | 5.51% | 7.06% | 4.85% | 5.99% |
| Developing Country Exclusions | 0.87% | 2.05% | 2.24% | 1.52% | 0.71% | 1.16% | 0.46% | 1.18% |
| Production | 34,378,774 | 33,953,172 | 35,423,140 | 37,590,345 | 37,626,027 | 32,843,307 | 19,937,466 | 16,942,813 |
| Total Imports | 2,591,374 | 3,581,299 | 4,045,356 | 3,376,396 | 2,763,774 | 3,080,583 | 1,282,032 | 1,426,055 |
| Total Imports Less NAFTA | 2,238,969 | 3,192,071 | 3,698,877 | 3,012,422 | 2,338,379 | 2,700,230 | 1,058,950 | 1,213,645 |
| Total Imports Less NAFTA and Developing Country Exclusions | 1,938,643 | 2,496,610 | 2,906,939 | 2,440,685 | 2,071,792 | 2,319,278 | 967,710 | 1,014,553 |
| Developing Country Exclusions | 300,327 | 695,463 | 791,937 | 571,735 | 266,584 | 380,952 | 91,241 | 199,092 |

Data from Table: Flat 3 - Flat 10

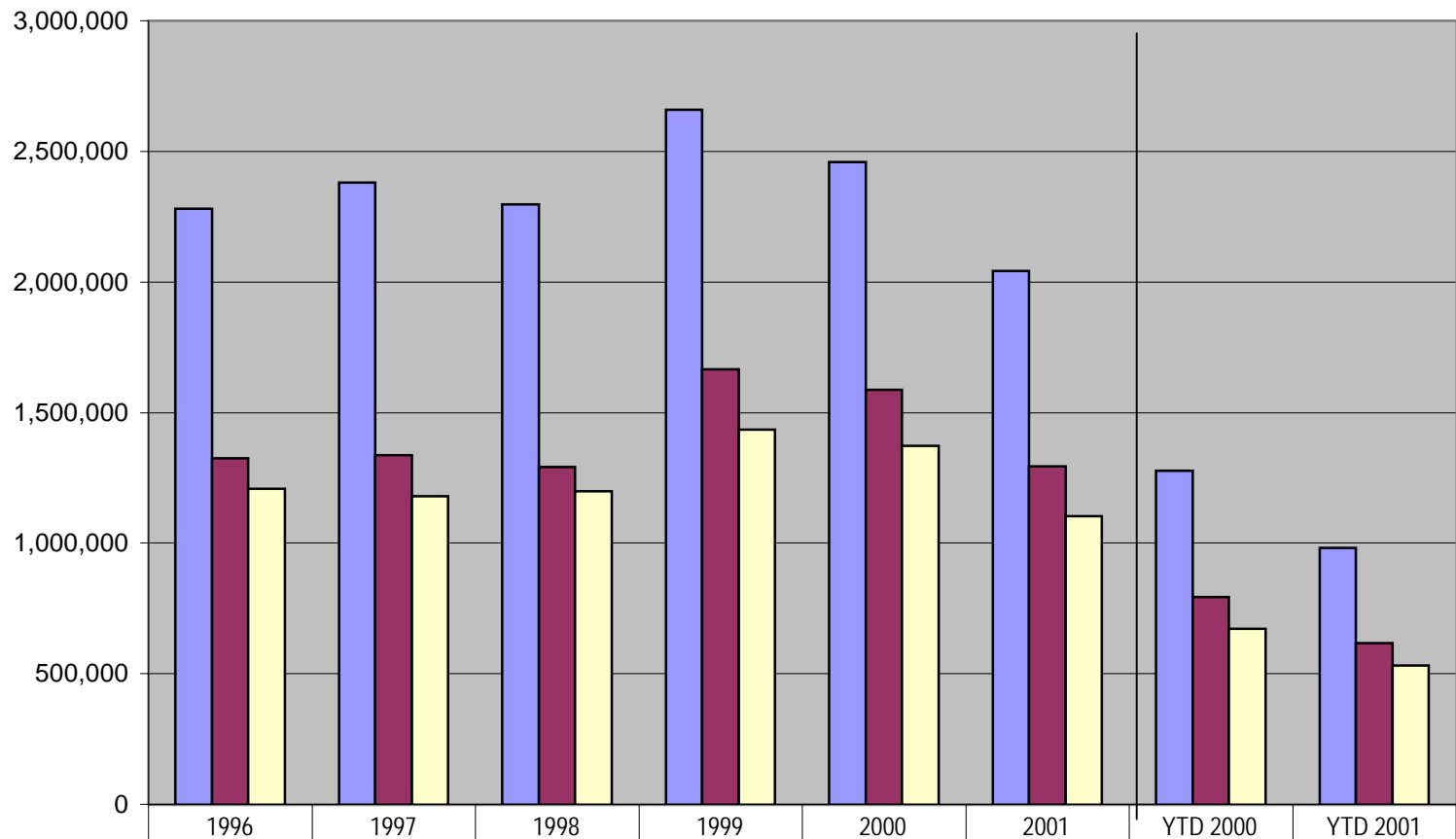
2001 Production Estimated by using the % change in commercial shipments (domestic and export, as reported by AISI) from first half 2001 to second to approximate the % change in production in the second half of 2001:

Year 2001 = (First Half 2001 Production)+((1+% Change in Shipments from 1st Half 2001)*First Half 2001 Production)

Developing Country Exclusions

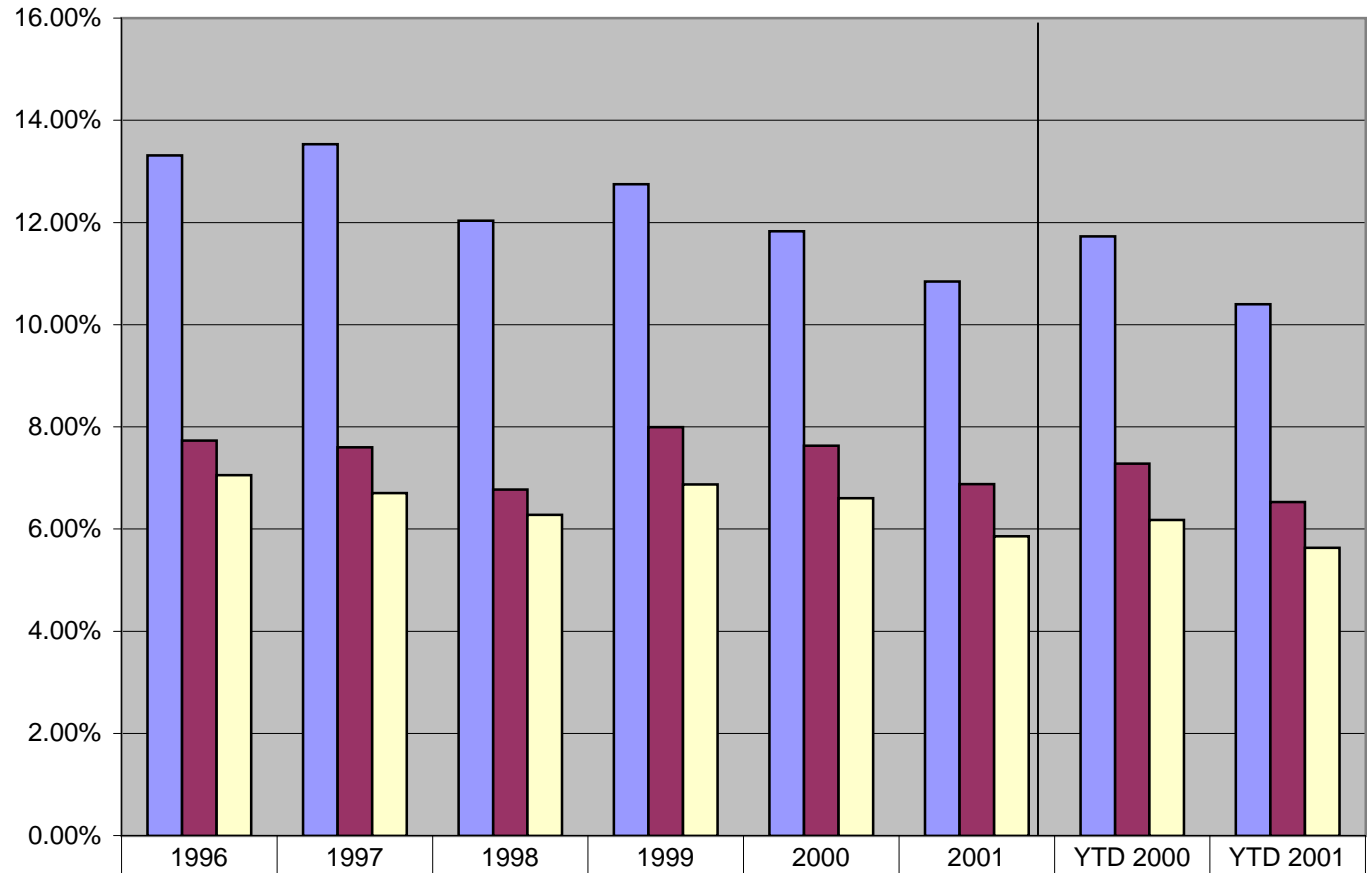
| | | | | | | | |
|-----------------|---------------|-------------|---------------|-----------|---------------|-------------|---------------|
| Albania | Turkey | Sri Lanka | Colombia | Slovakia | Lithuania | Pakistan | Kenya |
| Antigua Barbuda | Cameroon | St Lucia Is | Costa Rica | Estonia | Trin & Tobago | Panama | Kyrgystan |
| Argentina | Cen African R | Thailand | Cote d'Ivoire | Georgia | Mali | Paraguay | Latvia |
| Bahrain | Chile | Venezuela | Croatia | Gabon | Mauritius | Peru | Dominica Is |
| Bangladesh | South Africa | Indonesia | Czech Republi | Guatemala | Moldova | Philippines | Dominican Rep |
| Belize | Poland | Bulgaria | Romania | Guinea | Namibia | Zimbabwe | Ecuador |
| Bolivia | India | Honduras | Sierra Leone | Guyana | Niger | Jamaica | Egypt |
| Tunisia | Swaziland | Hungary | Senegal | Haiti | Oman | Jordan | El Salvador |

TOTAL COATED IMPORTS



| | | | | | | | | |
|--|-----------|-----------|-----------|-----------|-----------|-----------|-----------|---------|
| Total Imports | 2,280,307 | 2,381,043 | 2,296,228 | 2,658,569 | 2,459,329 | 2,040,929 | 1,276,676 | 982,714 |
| Total Imports Less NAFTA | 1,324,578 | 1,337,438 | 1,291,992 | 1,666,725 | 1,586,893 | 1,294,114 | 792,463 | 617,022 |
| Total Imports Less NAFTA and Developing Country Exclusions | 1,208,954 | 1,179,065 | 1,197,839 | 1,433,513 | 1,373,098 | 1,102,501 | 672,539 | 531,910 |

U.S. Coated Imports As a % of U.S. Production (as defined by the ITC)



| | | | | | | | | |
|--|--------|--------|--------|--------|--------|--------|--------|--------|
| Total Imports | 13.31% | 13.53% | 12.04% | 12.75% | 11.83% | 10.85% | 11.73% | 10.40% |
| Total Imports Less NAFTA | 7.73% | 7.60% | 6.77% | 7.99% | 7.63% | 6.88% | 7.28% | 6.53% |
| Total Imports Less NAFTA and Developing Country Exclusions | 7.06% | 6.70% | 6.28% | 6.87% | 6.60% | 5.86% | 6.18% | 5.63% |

Coated Imports

| | 1996 | 1997 | 1998 | 1999 | 2000 | 2001 | YTD 2000 | YTD 2001 |
|---|------------|------------|------------|------------|------------|------------|------------|-----------|
| Total Imports | 13.31% | 13.53% | 12.04% | 12.75% | 11.83% | 10.85% | 11.73% | 10.40% |
| Total Imports Less NAFTA | 7.73% | 7.60% | 6.77% | 7.99% | 7.63% | 6.88% | 7.28% | 6.53% |
| Total Imports Less NAFTA and Developing Country Exclusions | 7.06% | 6.70% | 6.28% | 6.87% | 6.60% | 5.86% | 6.18% | 5.63% |
| Developing Country Exclusions | 0.67% | 0.90% | 0.49% | 1.12% | 1.03% | 1.02% | 1.10% | 0.90% |
| Production | 17,131,014 | 17,595,498 | 19,077,330 | 20,858,349 | 20,789,317 | 18,817,961 | 10,885,261 | 9,449,439 |
| Total Imports | 2,280,307 | 2,381,043 | 2,296,228 | 2,658,569 | 2,459,329 | 2,040,929 | 1,276,676 | 982,714 |
| Total Imports Less NAFTA | 1,324,578 | 1,337,438 | 1,291,992 | 1,666,725 | 1,586,893 | 1,294,114 | 792,463 | 617,022 |
| Total Imports Less NAFTA and Developing Country Exclusions | 1,208,954 | 1,179,065 | 1,197,839 | 1,433,513 | 1,373,098 | 1,102,501 | 672,539 | 531,910 |
| Developing Country Exclusions | 115,622 | 158,372 | 94,152 | 233,211 | 213,792 | 191,614 | 119,924 | 85,111 |

Data from Table: Flat 3 - Flat 10

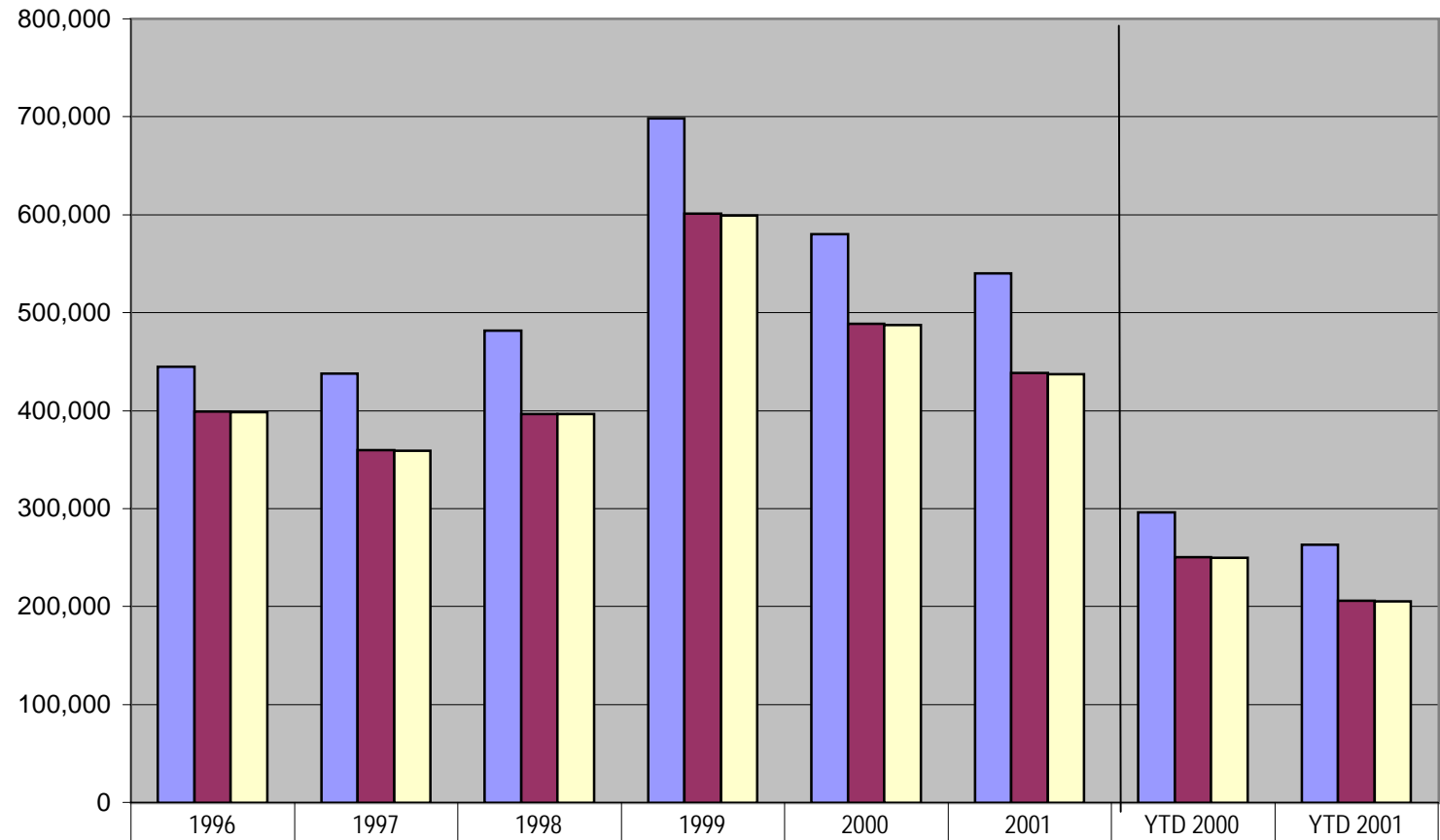
2001 Production Estimated by using the % change in commercial shipments (domestic and export, as reported by AISI) from first half 2001 to second to approximate the % change in production in the second half of 2001:

Year 2001 = (First Half 2001 Production)+((1+% Change in Shipments from 1st Half 2001)*First Half 2001 Production)

Developing Country Exclusions

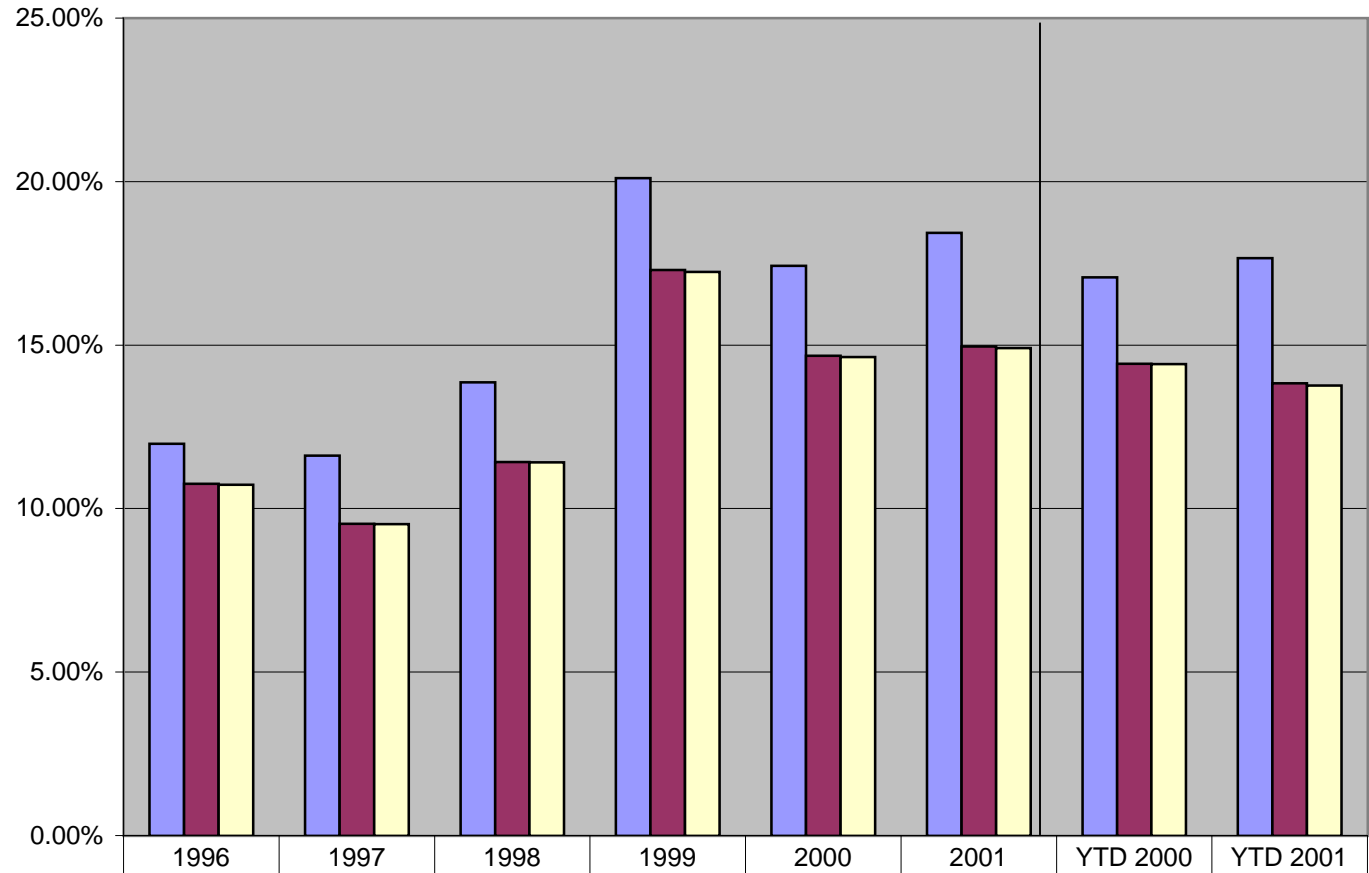
| | | | | | | | |
|--------------|-------------|---------------|---------------|----------|-----------------|---------------|-----------------|
| Argentina | Venezuela | Guatemala | Croatia | Namibia | Albania | Turkey | Cen African Rep |
| South Africa | Colombia | Tunisia | Czech Republi | Niger | Antigua Barbuda | Trin & Tobago | Chile |
| India | Ecuador | Swaziland | Dominica Is | Oman | Jamaica | Romania | Guinea |
| Bahrain | Egypt | Sri Lanka | Dominican Rep | Pakistan | Jordan | Sierra Leone | Guyana |
| Bangladesh | El Salvador | St Lucia Is | Lithuania | Panama | Kenya | Senegal | Haiti |
| Belize | Estonia | Thailand | Mali | Paraguay | Kyrgystan | Slovakia | Honduras |
| Bolivia | Georgia | Costa Rica | Mauritius | Peru | Latvia | Philippines | Hungary |
| Indonesia | Gabon | Cote d'Ivoire | Moldova | Poland | Zimbabwe | Cameroon | Bulgaria |

TOTAL TIN MILL IMPORTS



| | | | | | | | | |
|--|---------|---------|---------|---------|---------|---------|---------|---------|
| Total Imports | 444,684 | 438,121 | 481,611 | 698,543 | 580,196 | 540,254 | 295,971 | 263,091 |
| Total Imports Less NAFTA | 399,295 | 359,558 | 396,717 | 601,105 | 488,587 | 438,342 | 250,069 | 206,009 |
| Total Imports Less NAFTA and Developing Country Exclusions | 398,443 | 359,139 | 396,580 | 599,101 | 487,204 | 436,973 | 249,953 | 205,090 |

U.S. Tin Mill Imports As a % of U.S. Production (as defined by the ITC)



| | | | | | | | | |
|--|--------|--------|--------|--------|--------|--------|--------|--------|
| Total Imports | 11.98% | 11.62% | 13.86% | 20.10% | 17.43% | 18.44% | 17.07% | 17.66% |
| Total Imports Less NAFTA | 10.75% | 9.54% | 11.42% | 17.30% | 14.67% | 14.96% | 14.43% | 13.83% |
| Total Imports Less NAFTA and Developing Country Exclusions | 10.73% | 9.53% | 11.42% | 17.24% | 14.63% | 14.91% | 14.42% | 13.77% |

Tin Mill Imports

| | 1996 | 1997 | 1998 | 1999 | 2000 | 2001 | YTD 2000 | YTD 2001 |
|---|-----------|-----------|-----------|-----------|-----------|-----------|-----------|-----------|
| Total Imports | 11.98% | 11.62% | 13.86% | 20.10% | 17.43% | 18.44% | 17.07% | 17.66% |
| Total Imports Less NAFTA | 10.75% | 9.54% | 11.42% | 17.30% | 14.67% | 14.96% | 14.43% | 13.83% |
| Total Imports Less NAFTA and Developing Country Exclusions | 10.73% | 9.53% | 11.42% | 17.24% | 14.63% | 14.91% | 14.42% | 13.77% |
| Developing Country Exclusions | 0.02% | 0.01% | 0.00% | 0.06% | 0.04% | 0.05% | 0.01% | 0.06% |
| Production | 3,712,688 | 3,770,043 | 3,473,771 | 3,474,863 | 3,329,528 | 2,930,466 | 1,733,488 | 1,489,852 |
| Total Imports | 444,684 | 438,121 | 481,611 | 698,543 | 580,196 | 540,254 | 295,971 | 263,091 |
| Total Imports Less NAFTA | 399,295 | 359,558 | 396,717 | 601,105 | 488,587 | 438,342 | 250,069 | 206,009 |
| Total Imports Less NAFTA and Developing Country Exclusions | 398,443 | 359,139 | 396,580 | 599,101 | 487,204 | 436,973 | 249,953 | 205,090 |
| Developing Country Exclusions | 852 | 419 | 137 | 2,004 | 1,384 | 1,369 | 115 | 920 |

Data from Table: Flat 3 - Flat 10

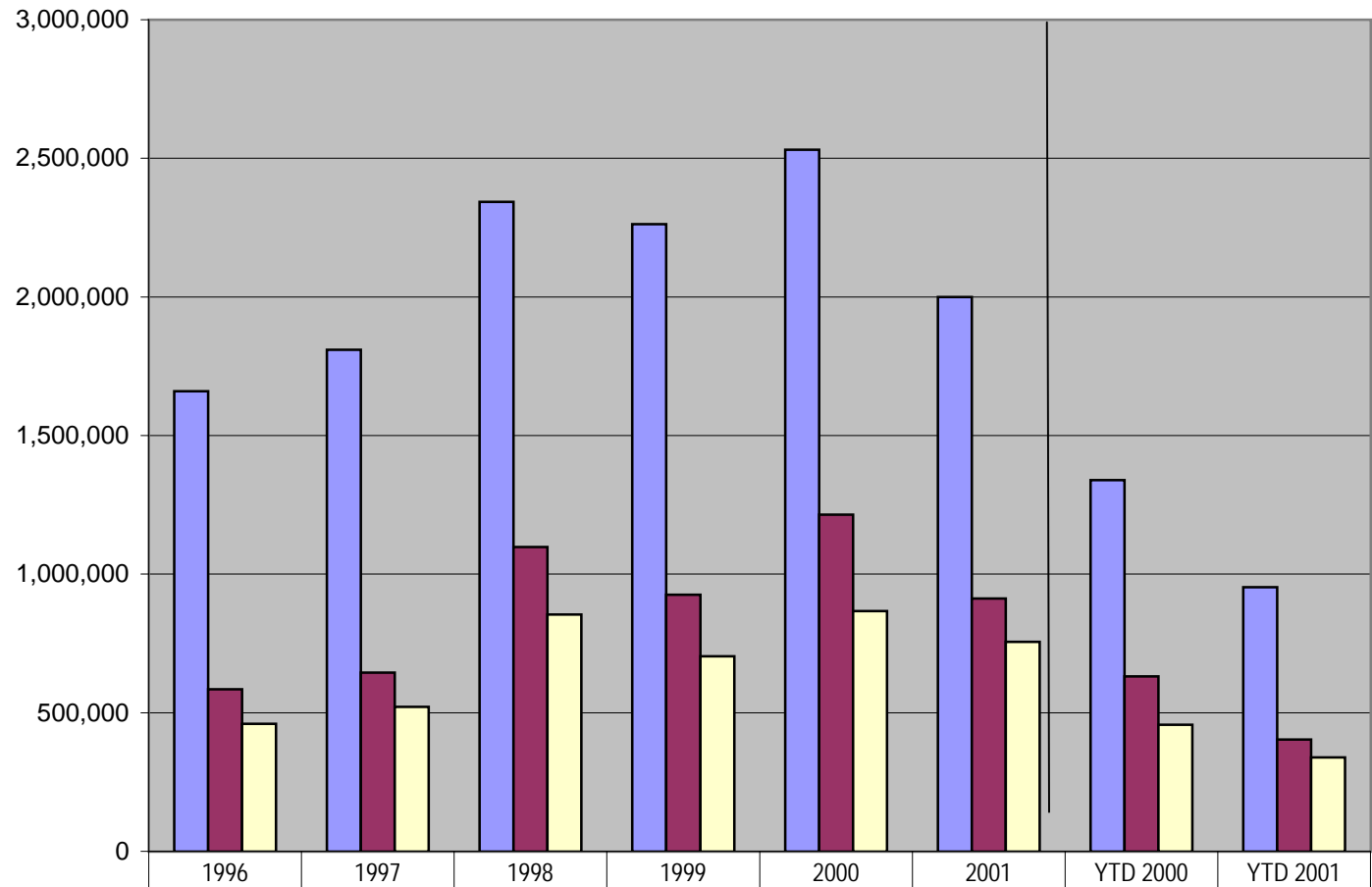
2001 Production Estimated by using the % change in commercial shipments (domestic and export, as reported by AISI) from first half 2001 to second half 2001 to approximate the % change in production in the to approximate the % change in production in the second half of 2001:

Year 2001 = (First Half 2001 Production)+((1+% Change in Shipments from 1st Half 2001)*First Half 2001 Production)

Developing Country Exclusions

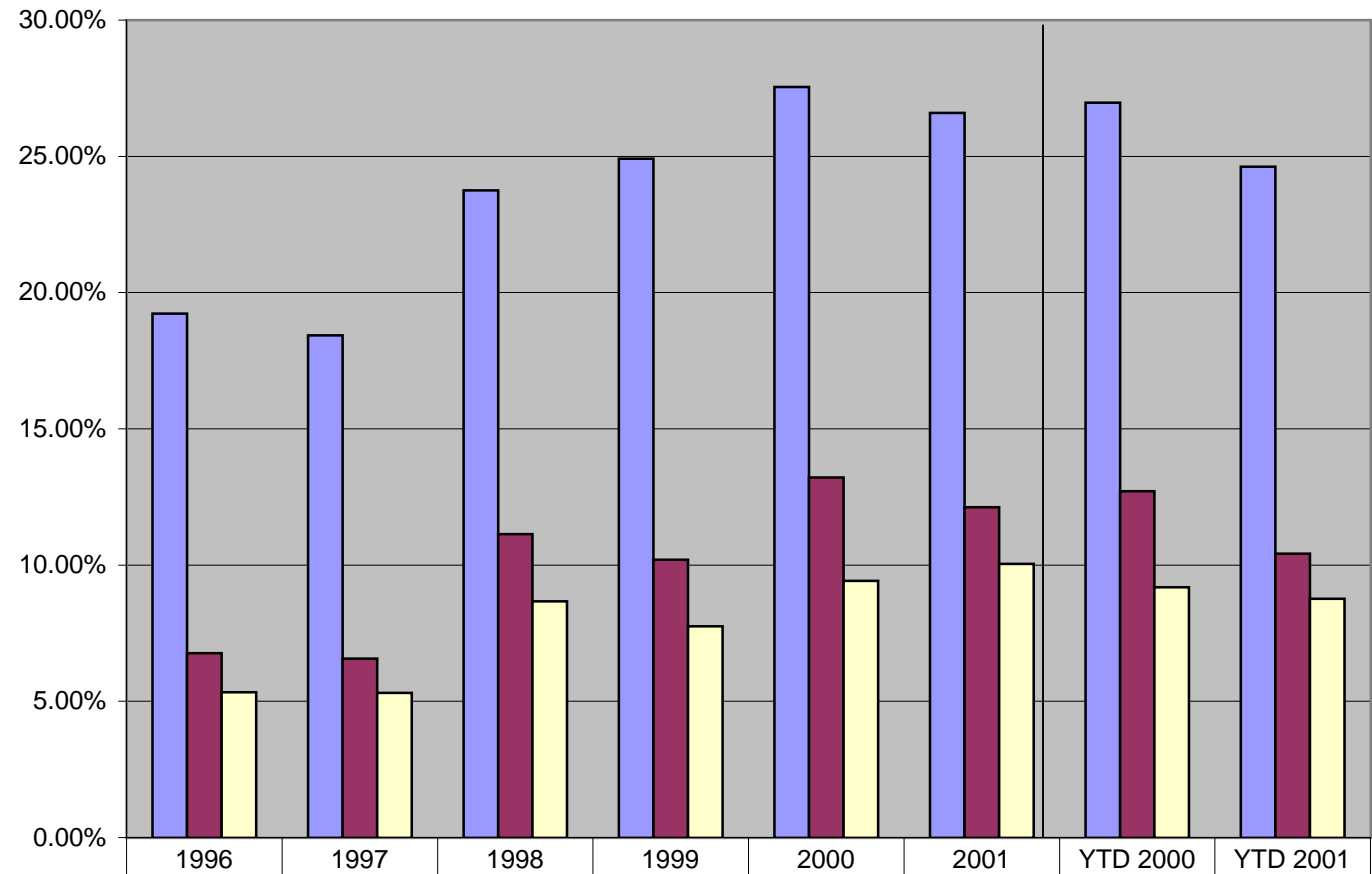
| | | | | | |
|-----------------|----------------|-----------|-----------|---------------|-----------|
| Albania | Costa Rica | Guatemala | Latvia | Philippines | Tunisia |
| Antigua Barbuda | Cote d'Ivoire | Guinea | Lithuania | Poland | Turkey |
| Argentina | Croatia | Guyana | Mali | Romania | Venezuela |
| Bahrain | Czech Republic | Haiti | Mauritius | Sierra Leone | Zimbabwe |
| Bangladesh | Dominica Is | Honduras | Moldova | Senegal | |
| Belize | Dominican Rep | Hungary | Namibia | Slovakia | |
| Bolivia | Ecuador | India | Niger | South Africa | |
| Bulgaria | Egypt | Indonesia | Oman | Swaziland | |
| Cameroon | El Salvador | Jamaica | Pakistan | Sri Lanka | |
| Cen African Rep | Estonia | Jordan | Panama | St Lucia Is | |
| Chile | Georgia | Kenya | Paraguay | Thailand | |
| Colombia | Gabon | Kyrgystan | Peru | Trin & Tobago | |

TOTAL HOTBAR IMPORTS



| | | | | | | | | |
|--|-----------|-----------|-----------|-----------|-----------|-----------|-----------|---------|
| Total Imports | 1,660,123 | 1,809,301 | 2,343,347 | 2,262,323 | 2,531,409 | 1,999,520 | 1,338,573 | 952,392 |
| Total Imports Less NAFTA | 584,125 | 644,577 | 1,098,248 | 925,711 | 1,214,150 | 911,513 | 630,673 | 403,165 |
| Total Imports Less NAFTA and Developing Country Exclusions | 460,507 | 521,476 | 854,664 | 703,544 | 866,203 | 755,128 | 456,131 | 338,866 |

U.S. Hot-Bar Imports As a % of U.S. Production (as defined by the ITC)



| | | | | | | | | |
|--|--------|--------|--------|--------|--------|--------|--------|--------|
| Total Imports | 19.23% | 18.43% | 23.76% | 24.92% | 27.54% | 26.59% | 26.97% | 24.62% |
| Total Imports Less NAFTA | 6.77% | 6.57% | 11.13% | 10.20% | 13.21% | 12.12% | 12.71% | 10.42% |
| Total Imports Less NAFTA and Developing Country Exclusions | 5.33% | 5.31% | 8.66% | 7.75% | 9.42% | 10.04% | 9.19% | 8.76% |

Hot Bar Imports as a Percentage of U.S. Production

| | 1996 | 1997 | 1998 | 1999 | 2000 | 2001 | YTD 2000 | YTD 2001 |
|---|-----------|-----------|-----------|-----------|-----------|-----------|-----------|-----------|
| Total Imports | 19.23% | 18.43% | 23.76% | 24.92% | 27.54% | 26.59% | 26.97% | 24.62% |
| Total Imports Less NAFTA | 6.77% | 6.57% | 11.13% | 10.20% | 13.21% | 12.12% | 12.71% | 10.42% |
| Total Imports Less NAFTA and Developing Country Exclusions | 5.33% | 5.31% | 8.66% | 7.75% | 9.42% | 10.04% | 9.19% | 8.76% |
| Developing Country Exclusions | 1.43% | 1.25% | 2.47% | 2.45% | 3.79% | 2.08% | 3.52% | 1.66% |
| Production | 8,631,901 | 9,815,907 | 9,864,337 | 9,079,894 | 9,191,687 | 7,519,656 | 4,963,322 | 3,867,987 |
| Total Imports | 1,660,123 | 1,809,301 | 2,343,347 | 2,262,323 | 2,531,409 | 1,999,520 | 1,338,573 | 952,392 |
| Total Imports Less NAFTA | 584,125 | 644,577 | 1,098,248 | 925,711 | 1,214,150 | 911,513 | 630,673 | 403,165 |
| Total Imports Less NAFTA and Developing Country Exclusions | 460,507 | 521,476 | 854,664 | 703,544 | 866,203 | 755,128 | 456,131 | 338,866 |
| Developing Country Exclusions | 123,619 | 123,103 | 243,586 | 222,166 | 347,948 | 156,385 | 174,540 | 64,300 |

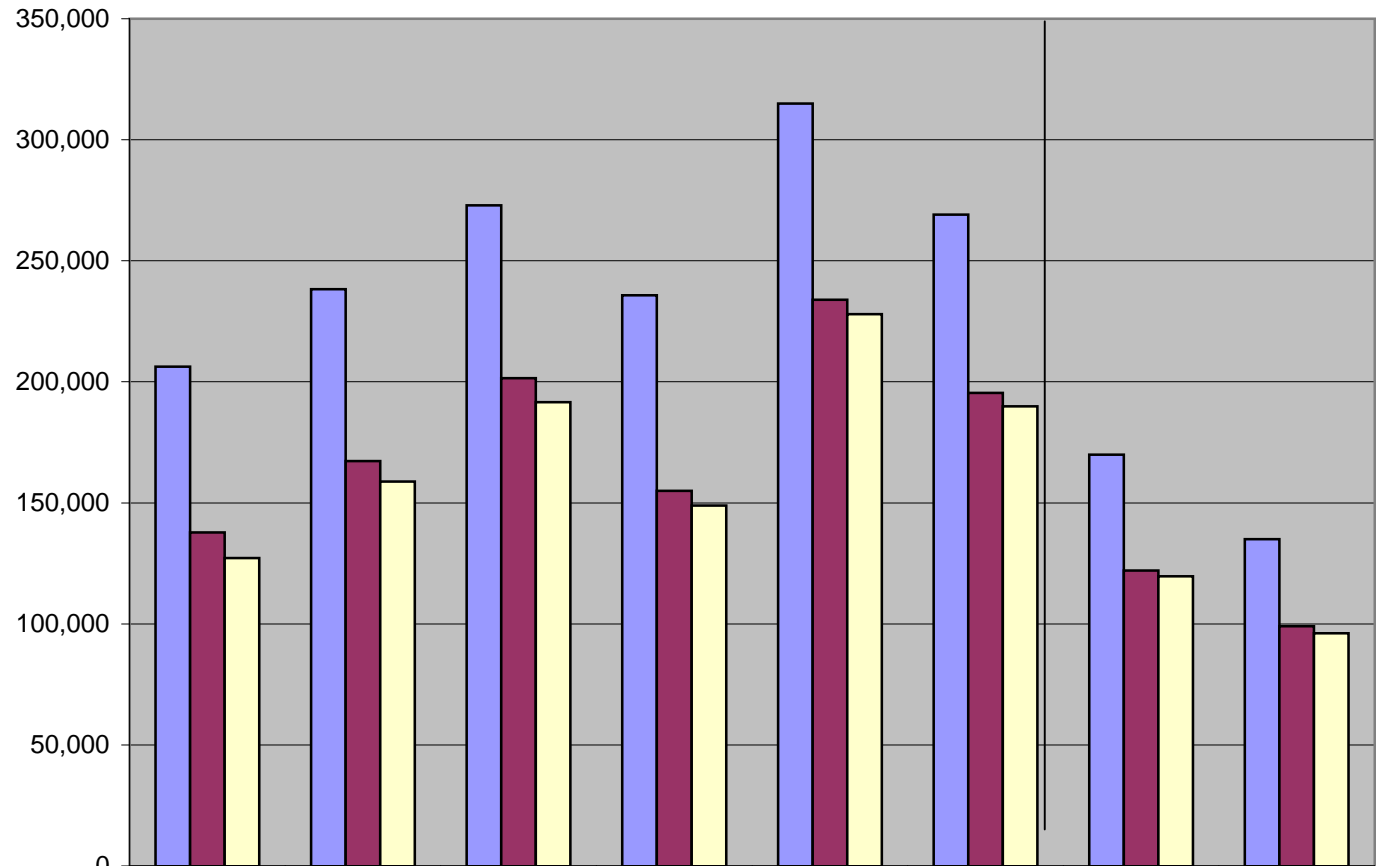
2001 Production Estimated by using the % change in commercial shipments (domestic and export, as reported by AISI) from first half 2001 to second half 2001 to approximate the % to approximate the % change in production in the second half of 2001:

Year 2001 = (First Half 2001 Production)+((1+% Change in Shipments from 1st Half 2001)*First Half 2001 Production)

Developing Country Exclusions

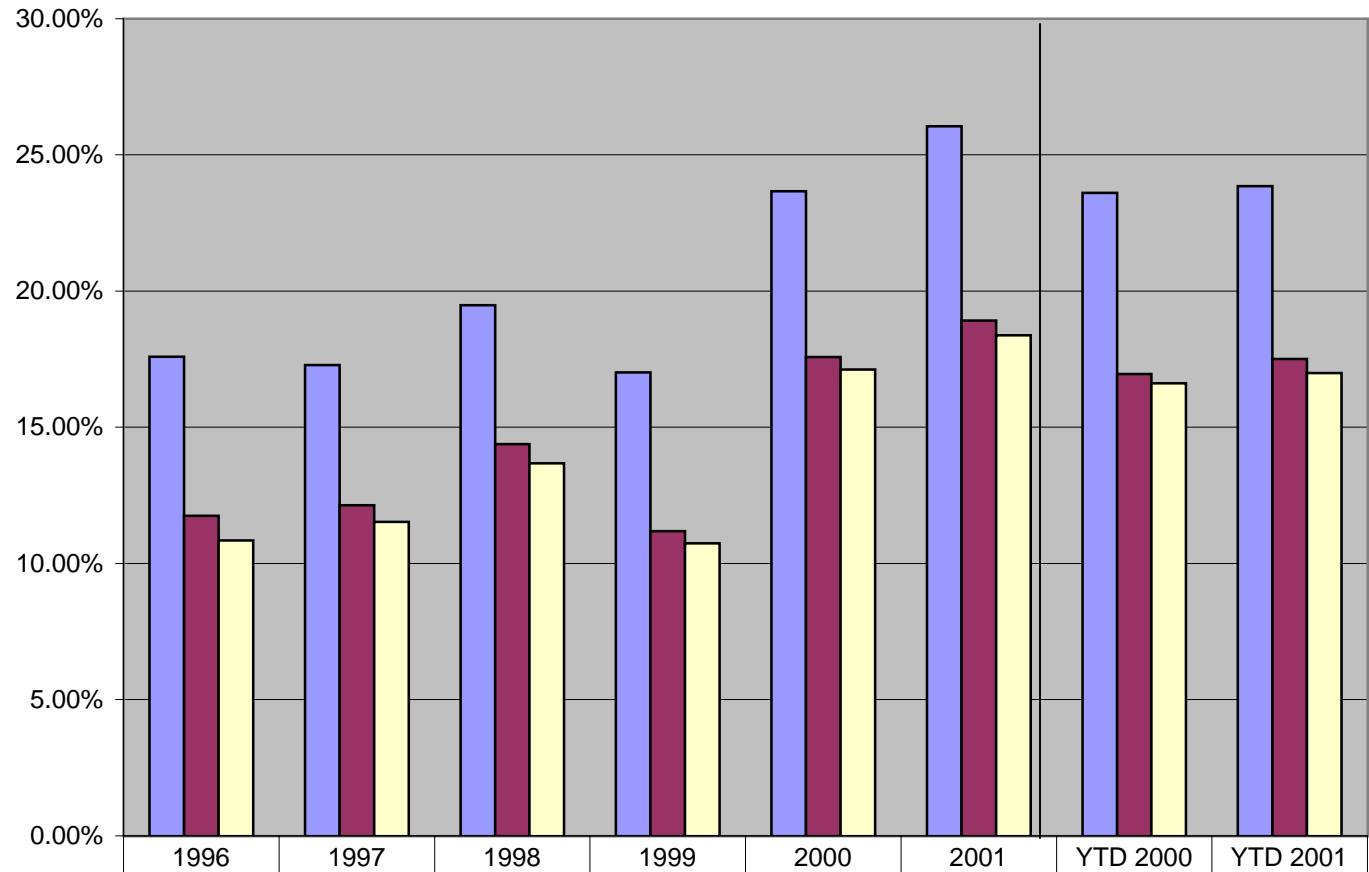
| | | | | | |
|-----------------|----------------|-----------|-----------|--------------|---------------|
| Albania | Colombia | Gabon | Kyrgystan | Peru | Trin & Tobago |
| Antigua Barbuda | Costa Rica | Guatemala | Latvia | Philippines | Tunisia |
| Argentina | Cote d'Ivoire | Guinea | Lithuania | Poland | Turkey |
| Bahrain | Croatia | Guyana | Mali | Romania | Venezuela |
| Bangladesh | Czech Republic | Haiti | Mauritius | Sierra Leone | Zimbabwe |
| Belize | Dominica Is | Honduras | Moldova | Senegal | |
| Bolivia | Dominican Rep | Hungary | Namibia | Slovakia | |
| Brazil | Ecuador | India | Niger | South Africa | |
| Bulgaria | Egypt | Indonesia | Oman | Swaziland | |
| Cameroon | El Salvador | Jamaica | Pakistan | Sri Lanka | |
| Cen African Rep | Estonia | Jordan | Panama | St Lucia Is | |
| Chile | Georgia | Kenya | Paraguay | Thailand | |

TOTAL COLD-FINISHED BAR IMPORTS



| | | | | | | | | |
|--|---------|---------|---------|---------|---------|---------|----------|----------|
| Total Imports | 1996 | 1997 | 1998 | 1999 | 2000 | 2001 | YTD 2000 | YTD 2001 |
| Total Imports Less NAFTA | 206,272 | 238,221 | 272,972 | 235,693 | 314,958 | 269,073 | 169,889 | 134,971 |
| Total Imports Less NAFTA and Developing Country Exclusions | 137,835 | 167,257 | 201,474 | 154,972 | 233,940 | 195,479 | 122,028 | 99,083 |
| | 127,199 | 158,819 | 191,596 | 148,843 | 227,897 | 189,843 | 119,600 | 96,148 |

U.S. Cold-Finished Bar Imports As a % of U.S. Production (as defined by the ITC)



| | | | | | | | | |
|--|--------|--------|--------|--------|--------|--------|--------|--------|
| Total Imports | 17.59% | 17.28% | 19.48% | 17.01% | 23.66% | 26.05% | 23.61% | 23.85% |
| Total Imports Less NAFTA | 11.76% | 12.14% | 14.38% | 11.18% | 17.58% | 18.92% | 16.96% | 17.51% |
| Total Imports Less NAFTA and Developing Country Exclusions | 10.85% | 11.52% | 13.67% | 10.74% | 17.12% | 18.38% | 16.62% | 16.99% |

Cold-Finished Bar Imports as a Percentage of U.S. Production

| | 1996 | 1997 | 1998 | 1999 | 2000 | 2001 | YTD 2000 | YTD 2001 |
|---|-----------|-----------|-----------|-----------|-----------|-----------|----------|----------|
| Total Imports | 17.59% | 17.28% | 19.48% | 17.01% | 23.66% | 26.05% | 23.61% | 23.85% |
| Total Imports Less NAFTA | 11.76% | 12.14% | 14.38% | 11.18% | 17.58% | 18.92% | 16.96% | 17.51% |
| Total Imports Less NAFTA and Developing Country Exclusions | 10.85% | 11.52% | 13.67% | 10.74% | 17.12% | 18.38% | 16.62% | 16.99% |
| Developing Country Exclusions | 0.91% | 0.61% | 0.70% | 0.44% | 0.45% | 0.55% | 0.34% | 0.52% |
| Production | 1,172,481 | 1,378,214 | 1,401,146 | 1,385,650 | 1,331,009 | 1,033,006 | 719,693 | 565,900 |
| Total Imports | 206,272 | 238,221 | 272,972 | 235,693 | 314,958 | 269,073 | 169,889 | 134,971 |
| Total Imports Less NAFTA | 137,835 | 167,257 | 201,474 | 154,972 | 233,940 | 195,479 | 122,028 | 99,083 |
| Total Imports Less NAFTA and Developing Country Exclusions | 127,199 | 158,819 | 191,596 | 148,843 | 227,897 | 189,843 | 119,600 | 96,148 |
| Developing Country Exclusions | 10,634 | 8,436 | 9,876 | 6,128 | 6,043 | 5,636 | 2,429 | 2,935 |

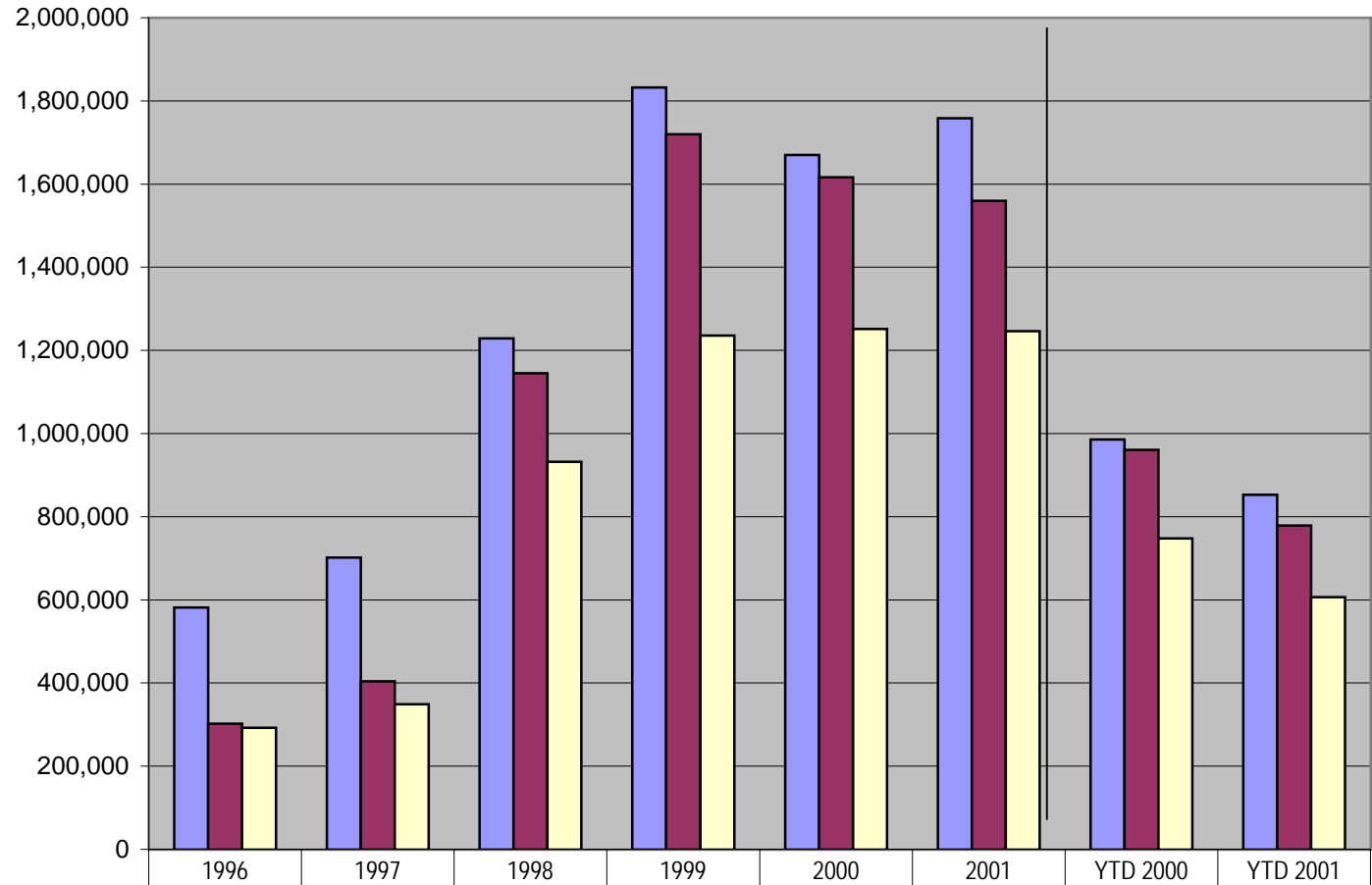
2001 Production Estimated by using the % change in commercial shipments (domestic and export, as reported by AISI) from first half 2001 to second half 2001 to approximate the % to approximate the % change in production in the second half of 2001:

Year 2001 = (First Half 2001 Production)+((1+% Change in Shipments from 1st Half 2001)*First Half 2001 Production)

Developing Country Exclusions

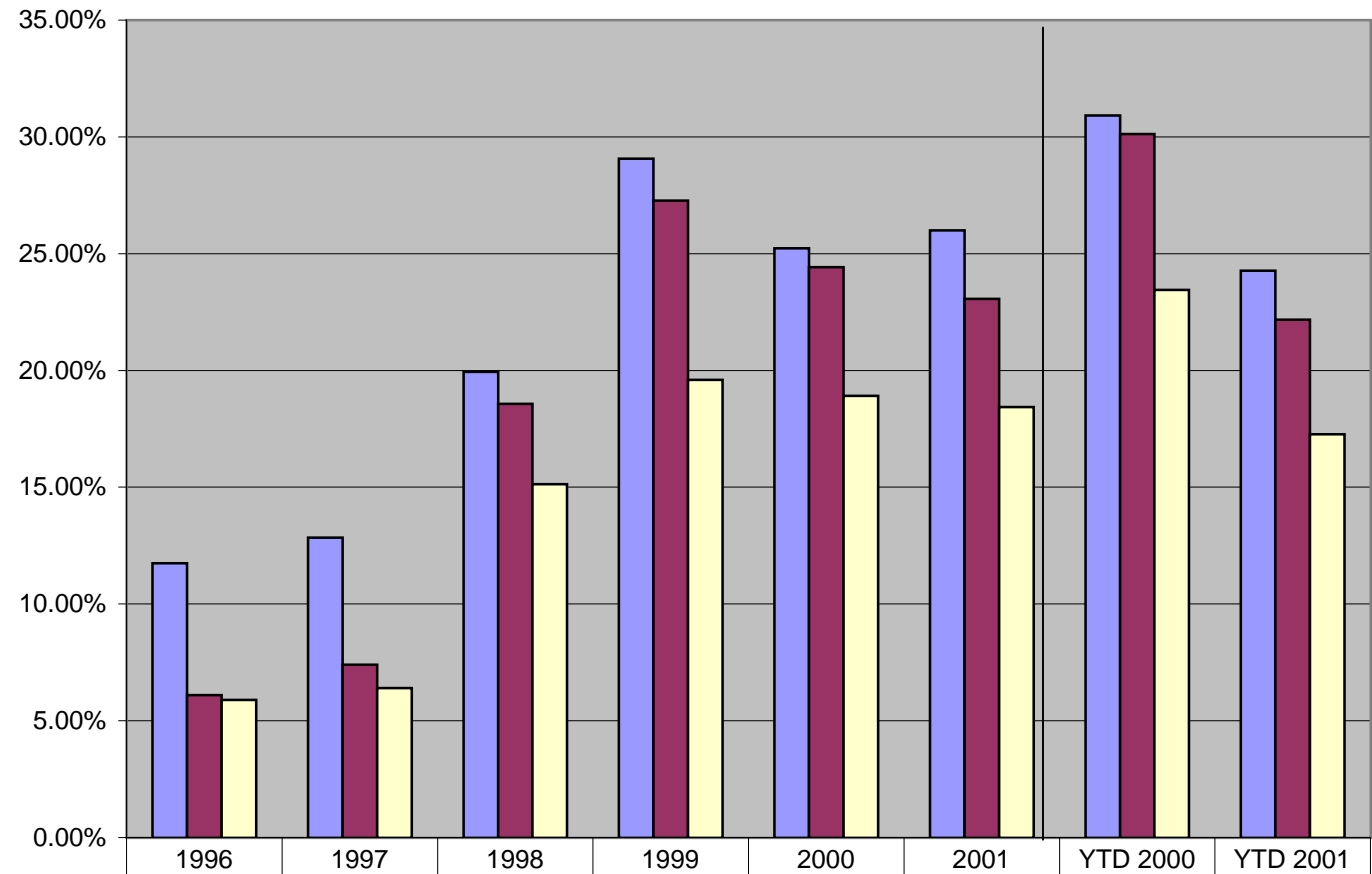
| | | | | | |
|-----------------|-----------|-------------|----------------|---------------|---------------|
| South Africa | Bolivia | Peru | Sierra Leone | St Lucia Is | Latvia |
| Bulgaria | Brazil | Philippines | Senegal | Thailand | El Salvador |
| Cameroon | Lithuania | Poland | Slovakia | Trin & Tobago | Estonia |
| Cen African Rep | Mali | Georgia | Romania | Indonesia | Dominica Is |
| Chile | Mauritius | Gabon | Swaziland | Zimbabwe | Dominican Rep |
| Colombia | Moldova | Guatemala | Sri Lanka | Venezuela | |
| Albania | Namibia | Guinea | Ecuador | Tunisia | |
| Antigua Barbuda | Niger | Guyana | Egypt | Turkey | |
| Argentina | Oman | Haiti | Costa Rica | Jamaica | |
| Bahrain | Pakistan | Honduras | Cote d'Ivoire | Jordan | |
| Bangladesh | Panama | Hungary | Croatia | Kenya | |
| Belize | Paraguay | India | Czech Republic | Kyrgystan | |

TOTAL REBAR IMPORTS



| | | | | | | | | |
|--|---------|---------|-----------|-----------|-----------|-----------|---------|---------|
| Total Imports | 581,731 | 701,303 | 1,229,195 | 1,832,608 | 1,669,829 | 1,758,208 | 985,991 | 852,488 |
| Total Imports Less NAFTA | 302,218 | 403,880 | 1,144,846 | 1,719,731 | 1,616,110 | 1,559,378 | 960,625 | 778,799 |
| Total Imports Less NAFTA and Developing Country Exclusions | 291,919 | 349,176 | 932,261 | 1,235,453 | 1,251,771 | 1,246,360 | 747,598 | 606,377 |

U.S. Rebar Imports As a % of U.S. Production (as defined by the ITC)



| | | | | | | | | |
|--|--------|--------|--------|--------|--------|--------|--------|--------|
| Total Imports | 11.74% | 12.84% | 19.94% | 29.07% | 25.23% | 26.00% | 30.92% | 24.27% |
| Total Imports Less NAFTA | 6.10% | 7.40% | 18.57% | 27.28% | 24.42% | 23.06% | 30.12% | 22.17% |
| Total Imports Less NAFTA and Developing Country Exclusions | 5.89% | 6.39% | 15.12% | 19.60% | 18.92% | 18.43% | 23.44% | 17.26% |

Rebar Imports as a Percentage of U.S. Production

| | 1996 | 1997 | 1998 | 1999 | 2000 | 2001 | YTD 2000 | YTD 2001 |
|---|-----------|-----------|-----------|-----------|-----------|-----------|-----------|-----------|
| Total Imports | 11.74% | 12.84% | 19.94% | 29.07% | 25.23% | 26.00% | 30.92% | 24.27% |
| Total Imports Less NAFTA | 6.10% | 7.40% | 18.57% | 27.28% | 24.42% | 23.06% | 30.12% | 22.17% |
| Total Imports Less NAFTA and Developing Country Exclusions | 5.89% | 6.39% | 15.12% | 19.60% | 18.92% | 18.43% | 23.44% | 17.26% |
| Developing Country Exclusions | 0.21% | 1.00% | 3.45% | 7.68% | 5.51% | 4.63% | 6.68% | 4.91% |
| Production | 4,953,429 | 5,460,521 | 6,164,161 | 6,304,540 | 6,617,278 | 6,761,727 | 3,189,271 | 3,512,857 |
| Total Imports | 581,731 | 701,303 | 1,229,195 | 1,832,608 | 1,669,829 | 1,758,208 | 985,991 | 852,488 |
| Total Imports Less NAFTA | 302,218 | 403,880 | 1,144,846 | 1,719,731 | 1,616,110 | 1,559,378 | 960,625 | 778,799 |
| Total Imports Less NAFTA and Developing Country Exclusions | 291,919 | 349,176 | 932,261 | 1,235,453 | 1,251,771 | 1,246,360 | 747,598 | 606,377 |
| Developing Country Exclusions | 10,298 | 54,706 | 212,583 | 484,275 | 364,340 | 313,018 | 213,028 | 172,424 |

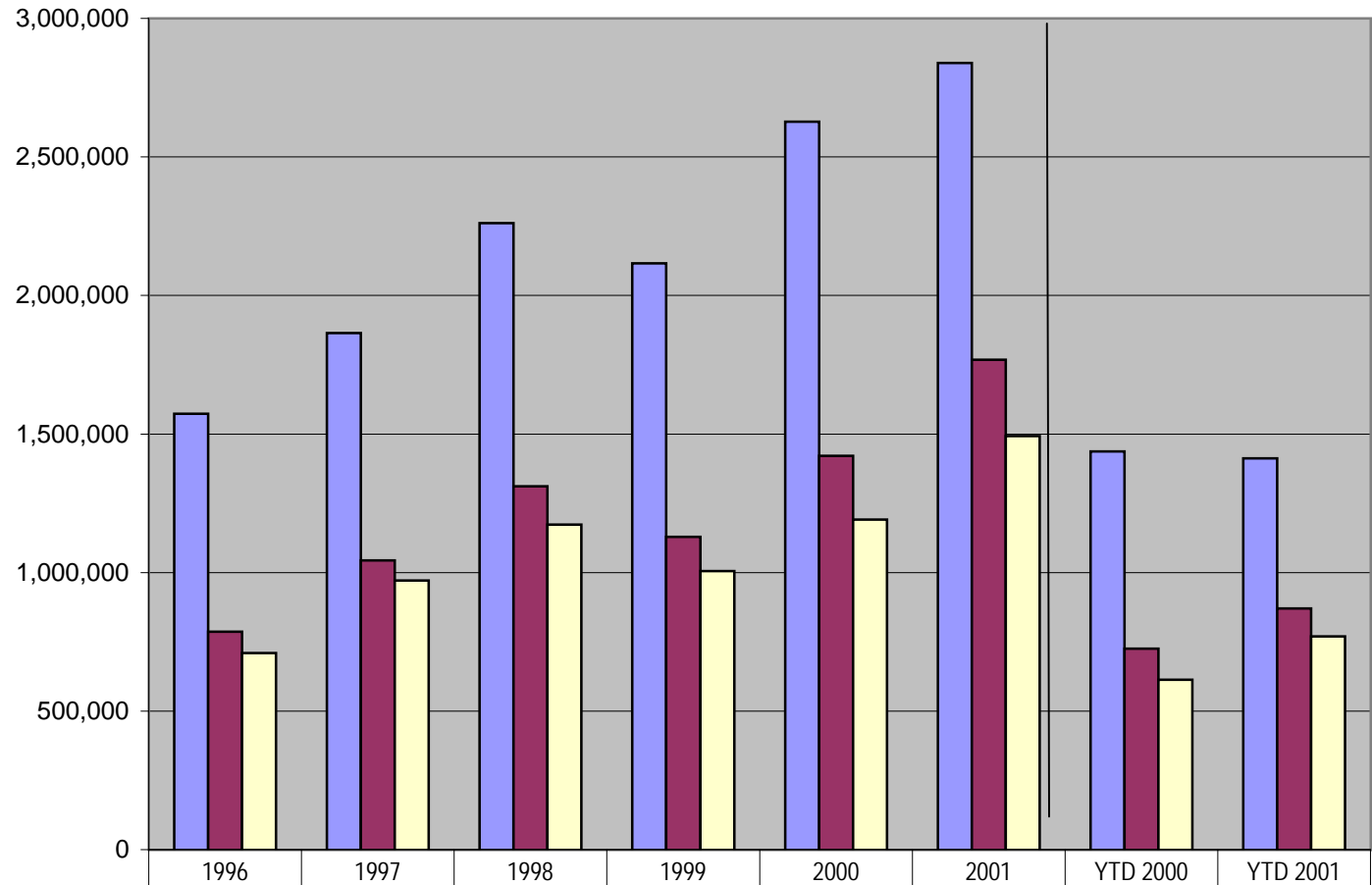
2001 Production Estimated by using the % change in commercial shipments (domestic and export, as reported by AISI) from first half 2001 to second half 2001 to approximate the % to approximate the % change in production in the second half of 2001:

Year 2001 = (First Half 2001 Production)+((1+% Change in Shipments from 1st Half 2001)*First Half 2001 Production)

Developing Country Exclusions

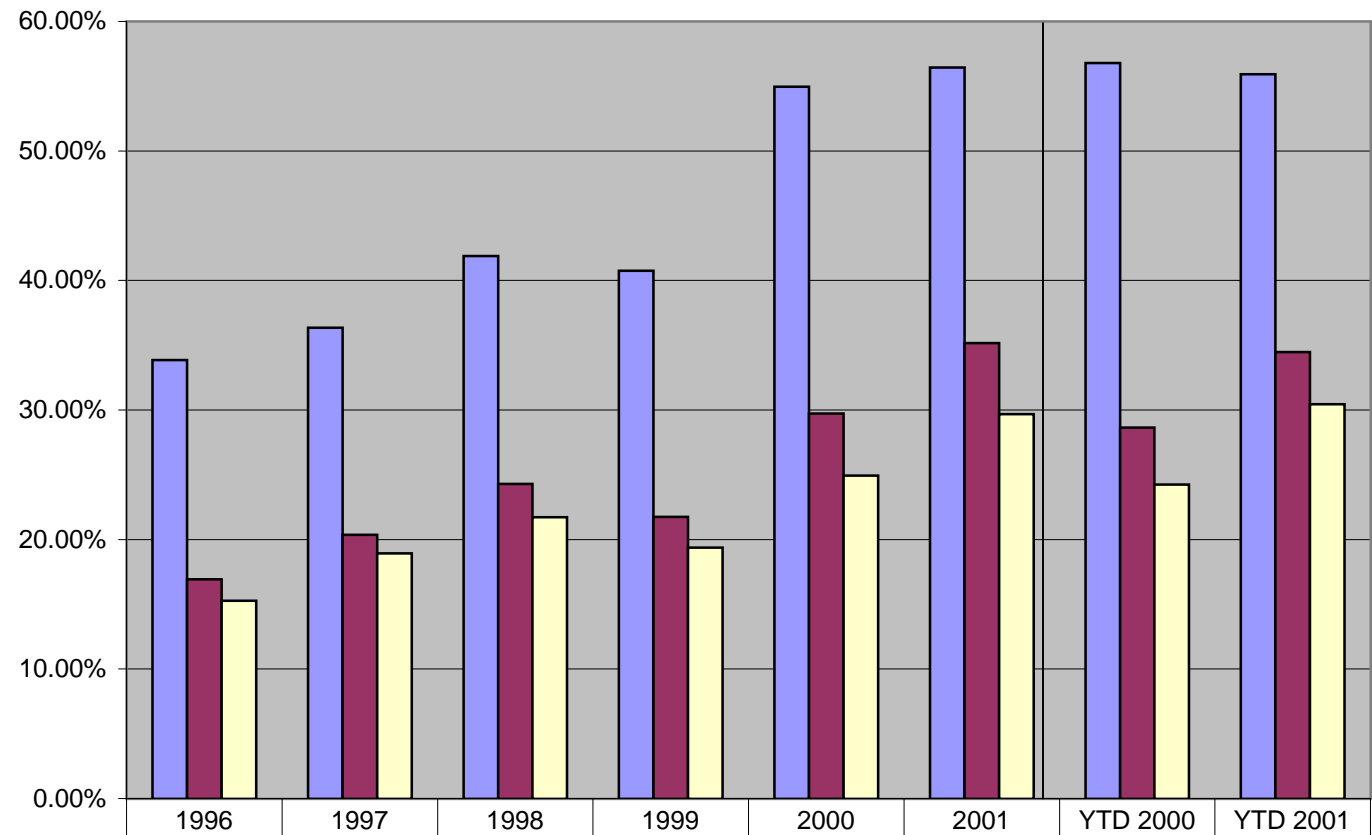
| | | | | | |
|-----------------|----------------|-----------|-----------|---------------|----------|
| Albania | Colombia | Gabon | Kyrgystan | Philippines | Tunisia |
| Antigua Barbuda | Costa Rica | Guatemala | Latvia | Poland | Zimbabwe |
| Argentina | Cote d'Ivoire | Guinea | Lithuania | Romania | |
| Bahrain | Croatia | Guyana | Mali | Sierra Leone | |
| Bangladesh | Czech Republic | Haiti | Mauritius | Senegal | |
| Belize | Dominica Is | Honduras | Namibia | Slovakia | |
| Bolivia | Dominican Rep | Hungary | Niger | South Africa | |
| Brazil | Ecuador | India | Oman | Swaziland | |
| Bulgaria | Egypt | Indonesia | Pakistan | Sri Lanka | |
| Cameroon | El Salvador | Jamaica | Panama | St Lucia Is | |
| Cen African Rep | Estonia | Jordan | Paraguay | Thailand | |
| Chile | Georgia | Kenya | Peru | Trin & Tobago | |

TOTAL WELDED TUBULAR OTHER THAN OCTG IMPORTS



| | | | | | | | | |
|--|-----------|-----------|-----------|-----------|-----------|-----------|-----------|-----------|
| Total Imports | 1996 | 1997 | 1998 | 1999 | 2000 | 2001 | YTD 2000 | YTD 2001 |
| | 1,572,792 | 1,863,963 | 2,261,472 | 2,115,835 | 2,627,208 | 2,838,716 | 1,437,206 | 1,412,496 |
| Total Imports Less NAFTA | 786,151 | 1,044,086 | 1,310,998 | 1,128,570 | 1,420,685 | 1,768,444 | 724,859 | 870,945 |
| Total Imports Less NAFTA and Developing Country Exclusions | 709,628 | 970,814 | 1,173,154 | 1,005,118 | 1,191,145 | 1,492,811 | 613,470 | 769,291 |

**U.S. Welded Tubular Other Than OCTG Imports As a % of U.S. Production
(as defined by the ITC)**



| | | | | | | | | |
|--|--------|--------|--------|--------|--------|--------|--------|--------|
| Total Imports | 33.85% | 36.36% | 41.89% | 40.76% | 54.97% | 56.43% | 56.79% | 55.92% |
| Total Imports Less NAFTA | 16.92% | 20.36% | 24.28% | 21.74% | 29.73% | 35.16% | 28.64% | 34.48% |
| Total Imports Less NAFTA and Developing Country Exclusions | 15.27% | 18.94% | 21.73% | 19.36% | 24.92% | 29.68% | 24.24% | 30.45% |

Welded Tubular Other Than OCTG Imports as a Percentage of U.S. Production

| | 1996 | 1997 | 1998 | 1999 | 2000 | 2001 | YTD 2000 | YTD 2001 |
|---|-----------|-----------|-----------|-----------|-----------|-----------|-----------|-----------|
| Total Imports | 33.85% | 36.36% | 41.89% | 40.76% | 54.97% | 56.43% | 56.79% | 55.92% |
| Total Imports Less NAFTA | 16.92% | 20.36% | 24.28% | 21.74% | 29.73% | 35.16% | 28.64% | 34.48% |
| Total Imports Less NAFTA and Developing Country Exclusions | 15.27% | 18.94% | 21.73% | 19.36% | 24.92% | 29.68% | 24.24% | 30.45% |
| Developing Country Exclusions | 1.65% | 1.43% | 2.55% | 2.38% | 4.80% | 5.48% | 4.40% | 4.02% |
| Production | 4,646,857 | 5,126,986 | 5,398,900 | 5,191,023 | 4,779,405 | 5,030,407 | 2,530,686 | 2,526,070 |
| Total Imports | 1,572,792 | 1,863,963 | 2,261,472 | 2,115,835 | 2,627,208 | 2,838,716 | 1,437,206 | 1,412,496 |
| Total Imports Less NAFTA | 786,151 | 1,044,086 | 1,310,998 | 1,128,570 | 1,420,685 | 1,768,444 | 724,859 | 870,945 |
| Total Imports Less NAFTA and Developing Country Exclusions | 709,628 | 970,814 | 1,173,154 | 1,005,118 | 1,191,145 | 1,492,811 | 613,470 | 769,291 |
| Developing Country Exclusions | 76,522 | 73,273 | 137,843 | 123,450 | 229,542 | 275,633 | 111,390 | 101,653 |

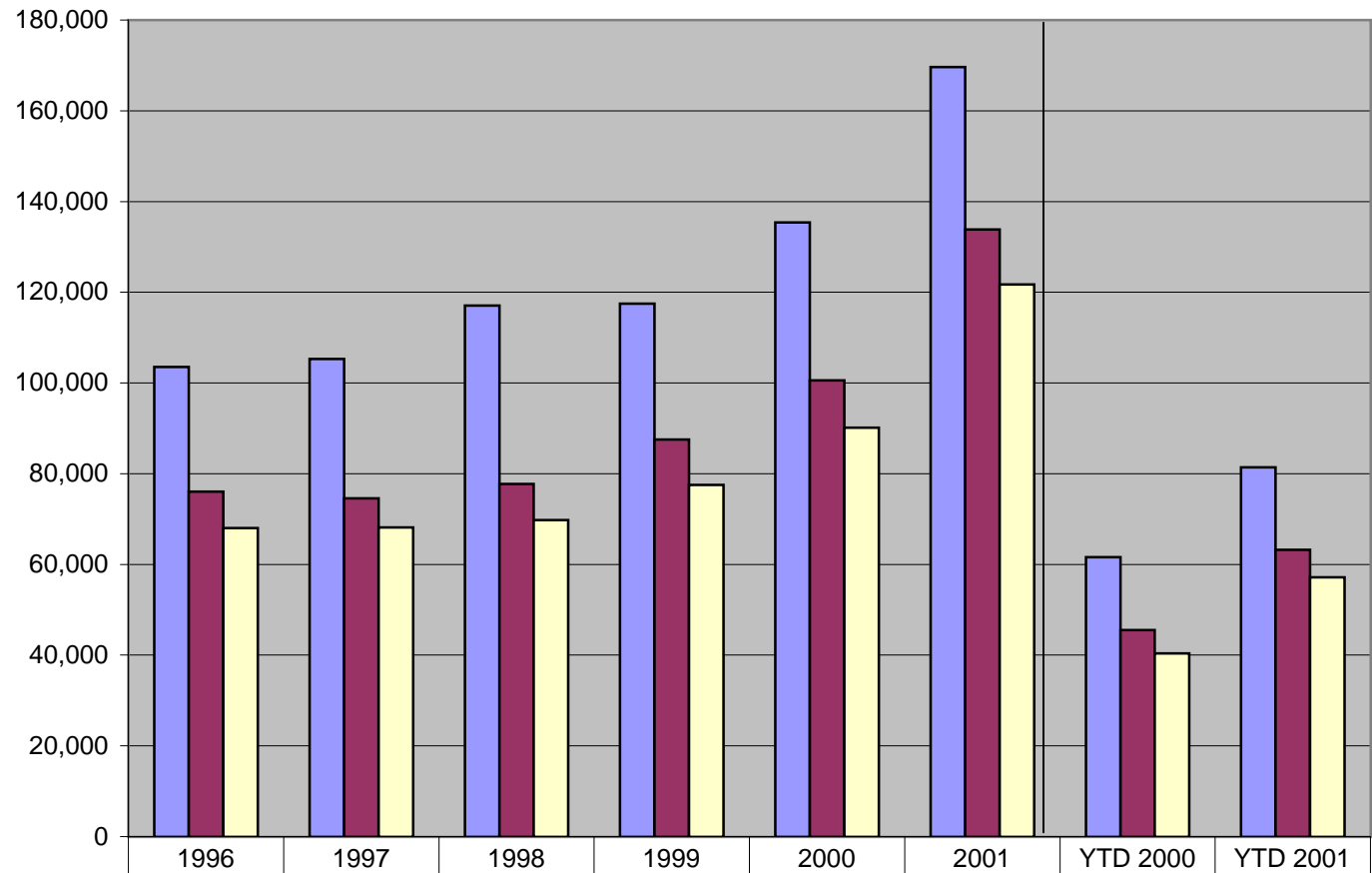
2001 Production Estimated by using the % change in commercial shipments (domestic and export, as reported by AISI) from first half 2001 to second half 2001 to approximate the % to approximate the % change in production in the second half of 2001:

Year 2001 = (First Half 2001 Production)+((1+% Change in Shipments from 1st Half 2001)*First Half 2001 Production)

Developing Country Exclusions

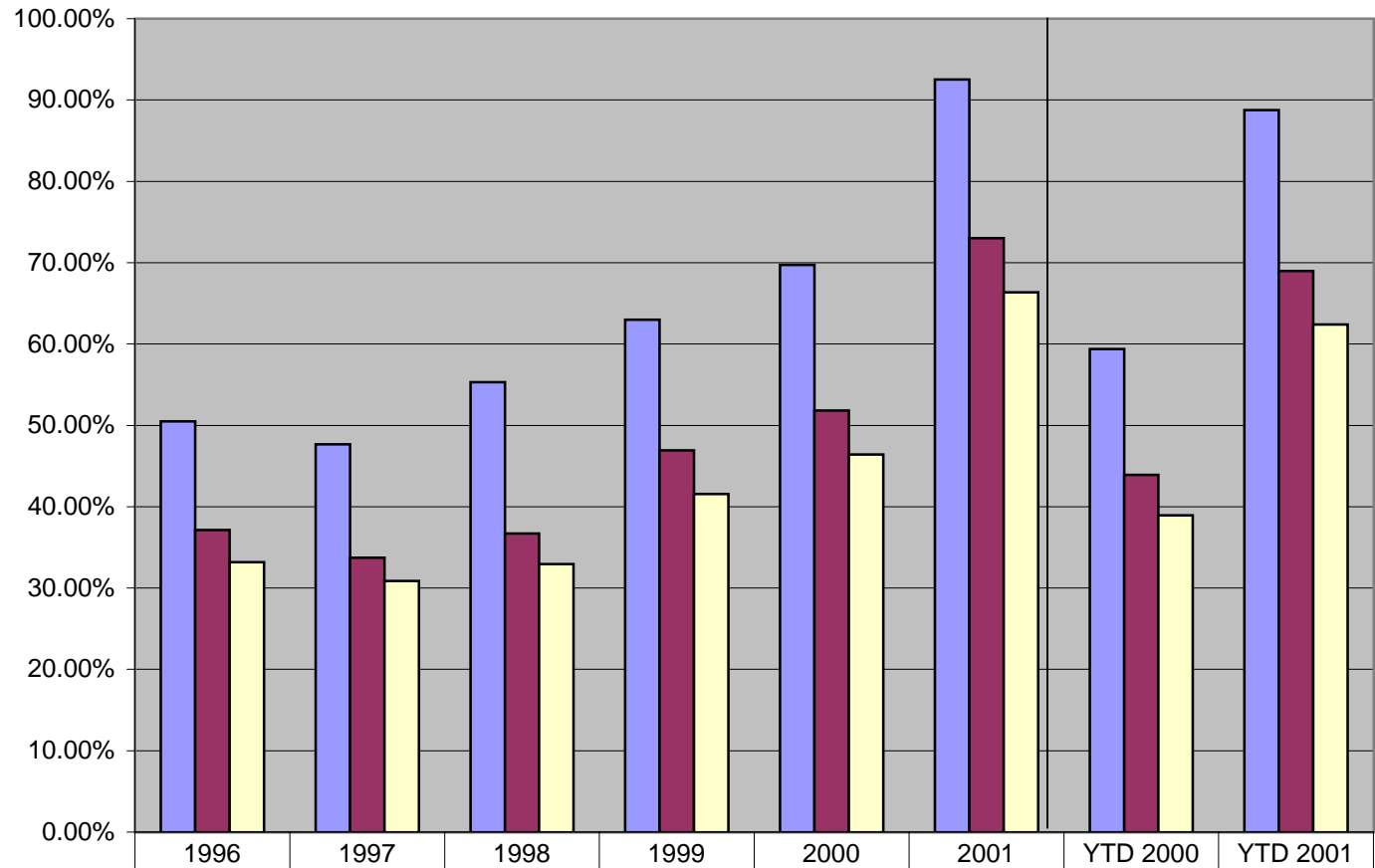
| | | | | | |
|-----------------|----------------|-----------|-----------|---------------|-----------|
| Albania | Colombia | Gabon | Kyrgystan | Peru | Tunisia |
| Antigua Barbuda | Costa Rica | Guatemala | Latvia | Philippines | Turkey |
| Argentina | Cote d'Ivoire | Guinea | Lithuania | Poland | Venezuela |
| Bahrain | Croatia | Guyana | Mali | Romania | Zimbabwe |
| Bangladesh | Czech Republic | Haiti | Mauritius | Sierra Leone | |
| Belize | Dominica Is | Honduras | Moldova | Senegal | |
| Bolivia | Dominican Rep | Hungary | Namibia | Slovakia | |
| Brazil | Ecuador | India | Niger | South Africa | |
| Bulgaria | Egypt | Indonesia | Oman | Swaziland | |
| Cameroon | El Salvador | Jamaica | Pakistan | Sri Lanka | |
| Cen African Rep | Estonia | Jordan | Panama | St Lucia Is | |
| Chile | Georgia | Kenya | Paraguay | Trin & Tobago | |

TOTAL FITTING AND FLANGE IMPORTS



| | | | | | | | | |
|--|---------|---------|---------|---------|---------|---------|--------|--------|
| Total Imports | 103,507 | 105,313 | 117,093 | 117,461 | 135,399 | 169,607 | 61,588 | 81,380 |
| Total Imports Less NAFTA | 76,078 | 74,533 | 77,715 | 87,544 | 100,592 | 133,825 | 45,537 | 63,226 |
| Total Imports Less NAFTA and Developing Country Exclusions | 68,004 | 68,139 | 69,757 | 77,514 | 90,140 | 121,681 | 40,390 | 57,185 |

U.S. Fitting and Flange Imports As a % of U.S. Production (as defined by the ITC)



| | | | | | | | | |
|--|--------|--------|--------|--------|--------|--------|--------|--------|
| Total Imports | 50.50% | 47.68% | 55.32% | 62.99% | 69.73% | 92.51% | 59.39% | 88.78% |
| Total Imports Less NAFTA | 37.12% | 33.74% | 36.72% | 46.94% | 51.80% | 72.99% | 43.91% | 68.97% |
| Total Imports Less NAFTA and Developing Country Exclusions | 33.18% | 30.85% | 32.96% | 41.56% | 46.42% | 66.37% | 38.95% | 62.38% |

Fitting and Flange Imports as a Percentage of U.S. Production

| | 1996 | 1997 | 1998 | 1999 | 2000 | 2001 | YTD 2000 | YTD 2001 |
|---|---------|---------|---------|---------|---------|---------|----------|----------|
| Total Imports | 50.50% | 47.68% | 55.32% | 62.99% | 69.73% | 92.51% | 59.39% | 88.78% |
| Total Imports Less NAFTA | 37.12% | 33.74% | 36.72% | 46.94% | 51.80% | 72.99% | 43.91% | 68.97% |
| Total Imports Less NAFTA and Developing Country Exclusions | 33.18% | 30.85% | 32.96% | 41.56% | 46.42% | 66.37% | 38.95% | 62.38% |
| Developing Country Exclusions | 3.94% | 2.89% | 3.76% | 5.38% | 5.38% | 6.62% | 4.96% | 6.59% |
| Production | 204,972 | 220,881 | 211,648 | 186,490 | 194,175 | 183,338 | 103,707 | 91,669 |
| Total Imports | 103,507 | 105,313 | 117,093 | 117,461 | 135,399 | 169,607 | 61,588 | 81,380 |
| Total Imports Less NAFTA | 76,078 | 74,533 | 77,715 | 87,544 | 100,592 | 133,825 | 45,537 | 63,226 |
| Total Imports Less NAFTA and Developing Country Exclusions | 68,004 | 68,139 | 69,757 | 77,514 | 90,140 | 121,681 | 40,390 | 57,185 |
| Developing Country Exclusions | 8,074 | 6,394 | 7,958 | 10,030 | 10,452 | 12,144 | 5,147 | 6,041 |

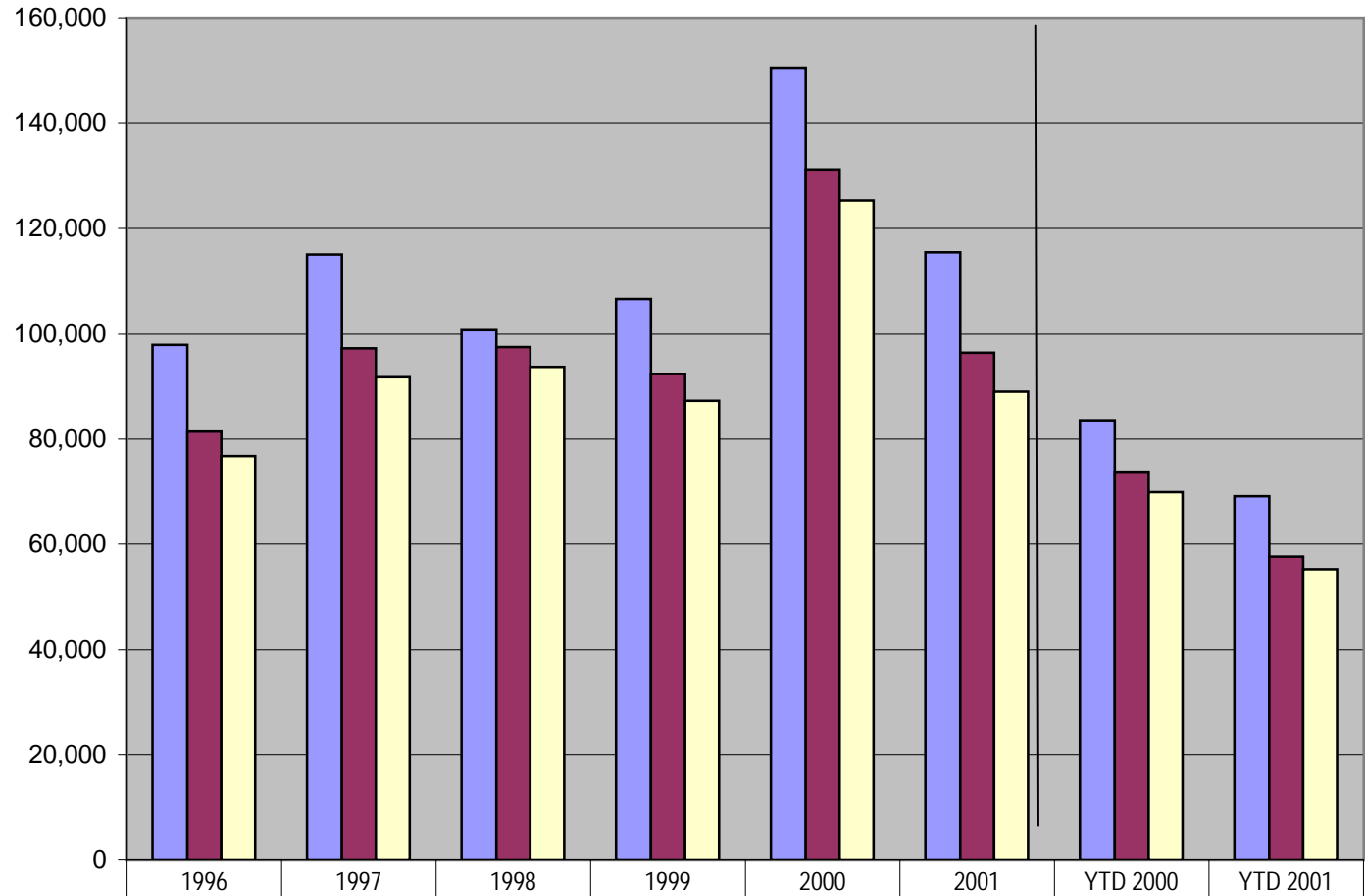
Data from Table: Tubular 3 - Tubular 14

Due to the lack of available data for AISI commercial shipments of fittings and flanges, 2001 Production was calculated by annualizing 2001 YTD Production Data.

Developing Country Exclusions

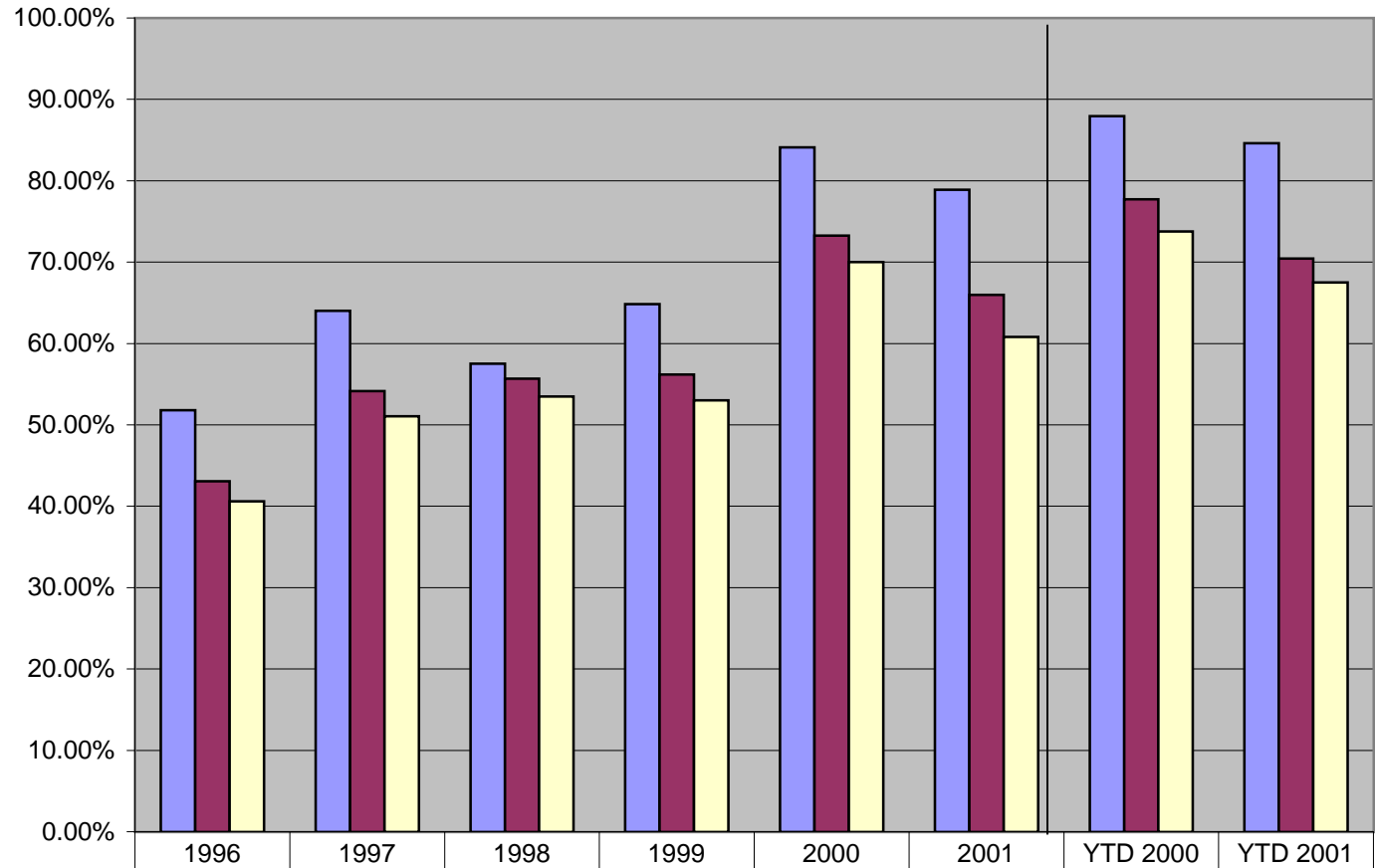
| | | | | | |
|--------------|---------------|-------------|-----------------|---------------|-----------------|
| Swaziland | Senegal | Kyrgystan | Philippines | Trin & Tobago | El Salvador |
| Sri Lanka | Slovakia | Tunisia | Suriname | Oman | Estonia |
| St Lucia Is | Cote d'Ivoire | Turkey | Mali | Pakistan | Georgia |
| Thailand | Croatia | Zimbabwe | Mauritius | Latvia | Haiti |
| Venezuela | Czech Repub | Colombia | Moldova | Lithuania | Honduras |
| Poland | Indonesia | Dominica Is | Namibia | Jamaica | Hungary |
| Gabon | Costa Rica | Belize | Niger | Jordan | Cen African Rep |
| Guatemala | Bulgaria | Bolivia | Albania | Bahrain | Guyana |
| South Africa | Cameroon | Panama | Antigua Barbuda | Bangladesh | Dominican Rep |
| Brazil | Guinea | Paraguay | Argentina | Ecuador | |
| Sierra Leone | Chile | Peru | Kenya | Egypt | |

TOTAL SS BAR IMPORTS



| | | | | | | | | |
|--|--------|---------|---------|---------|---------|---------|--------|--------|
| Total Imports | 97,928 | 114,999 | 100,765 | 106,591 | 150,592 | 115,387 | 83,443 | 69,179 |
| Total Imports Less NAFTA | 81,426 | 97,280 | 97,552 | 92,341 | 131,184 | 96,464 | 73,738 | 57,584 |
| Total Imports Less NAFTA and Developing Country Exclusions | 76,743 | 91,723 | 93,712 | 87,164 | 125,394 | 88,931 | 69,993 | 55,168 |

U.S. SS Bar Imports As a % of U.S. Production (as defined by the ITC)



| | | | | | | | | |
|--|--------|--------|--------|--------|--------|--------|--------|--------|
| Total Imports | 51.79% | 64.01% | 57.52% | 64.85% | 84.09% | 78.90% | 87.94% | 84.62% |
| Total Imports Less NAFTA | 43.07% | 54.15% | 55.69% | 56.18% | 73.25% | 65.96% | 77.71% | 70.44% |
| Total Imports Less NAFTA and Developing Country Exclusions | 40.59% | 51.05% | 53.50% | 53.03% | 70.02% | 60.81% | 73.76% | 67.48% |

SS Bar Imports as a Percentage of U.S. Production

| | 1996 | 1997 | 1998 | 1999 | 2000 | 2001 | YTD 2000 | YTD 2001 |
|---|---------|---------|---------|---------|---------|---------|----------|----------|
| Total Imports | 51.79% | 64.01% | 57.52% | 64.85% | 84.09% | 78.90% | 87.94% | 84.62% |
| Total Imports Less NAFTA | 43.07% | 54.15% | 55.69% | 56.18% | 73.25% | 65.96% | 77.71% | 70.44% |
| Total Imports Less NAFTA and Developing Country Exclusions | 40.59% | 51.05% | 53.50% | 53.03% | 70.02% | 60.81% | 73.76% | 67.48% |
| Developing Country Exclusions | 2.48% | 3.09% | 2.19% | 3.15% | 3.23% | 5.15% | 3.95% | 2.95% |
| Production | 189,073 | 179,664 | 175,171 | 164,376 | 179,090 | 146,243 | 94,890 | 81,750 |
| Total Imports | 97,928 | 114,999 | 100,765 | 106,591 | 150,592 | 115,387 | 83,443 | 69,179 |
| Total Imports Less NAFTA | 81,426 | 97,280 | 97,552 | 92,341 | 131,184 | 96,464 | 73,738 | 57,584 |
| Total Imports Less NAFTA and Developing Country Exclusions | 76,743 | 91,723 | 93,712 | 87,164 | 125,394 | 88,931 | 69,993 | 55,168 |
| Developing Country Exclusions | 4,683 | 5,556 | 3,841 | 5,176 | 5,791 | 7,533 | 3,746 | 2,413 |

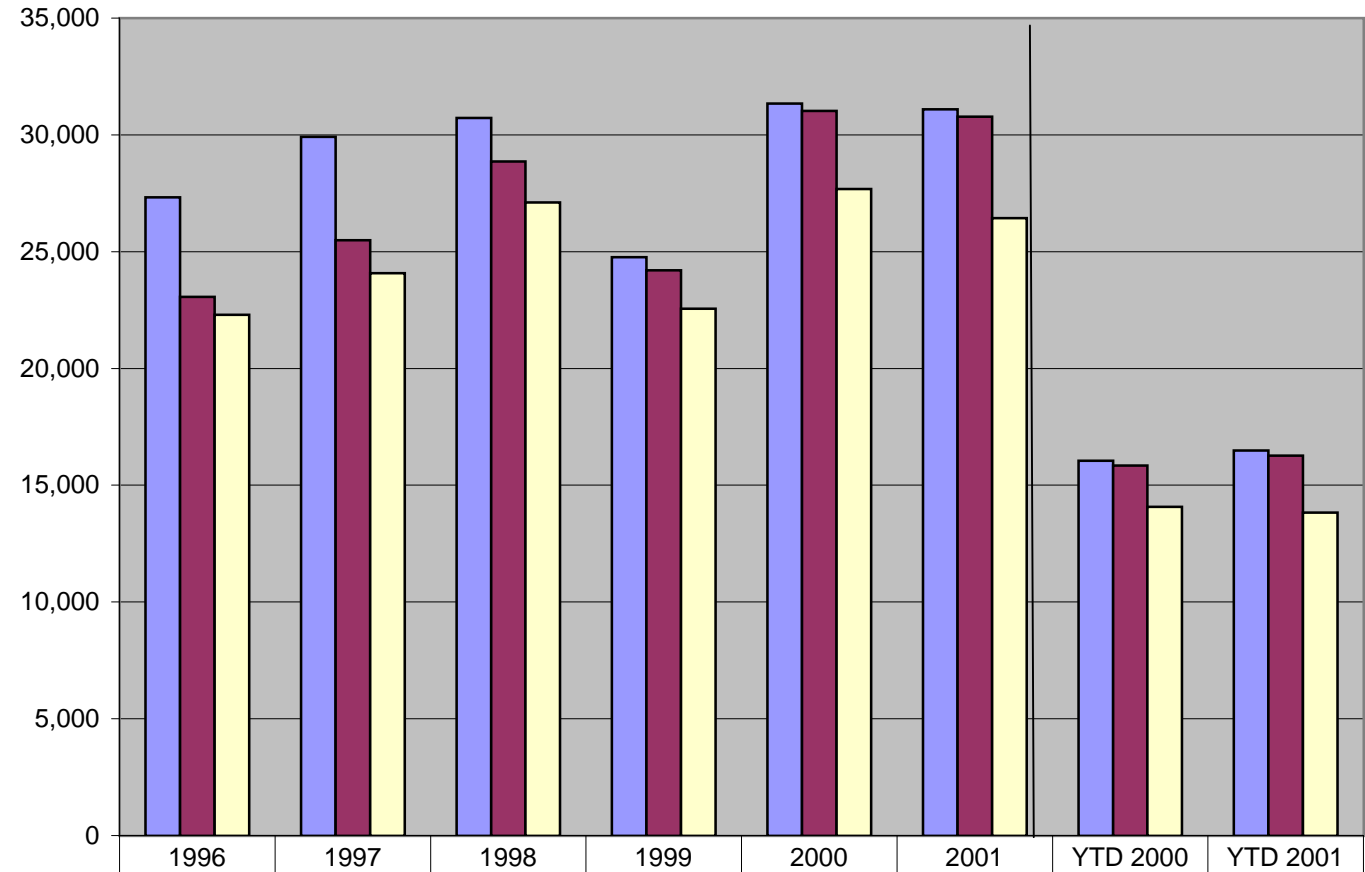
2001 Production Estimated by using the % change in commercial shipments (domestic and export, as reported by AISI) from first half 2001 to second half 2001 to approximate the % change in production in the second half of 2001:

Year 2001 = (First Half 2001 Production)+((1+% Change in Shipments from 1st Half 2001)*First Half 2001 Production)

Developing Country Exclusions

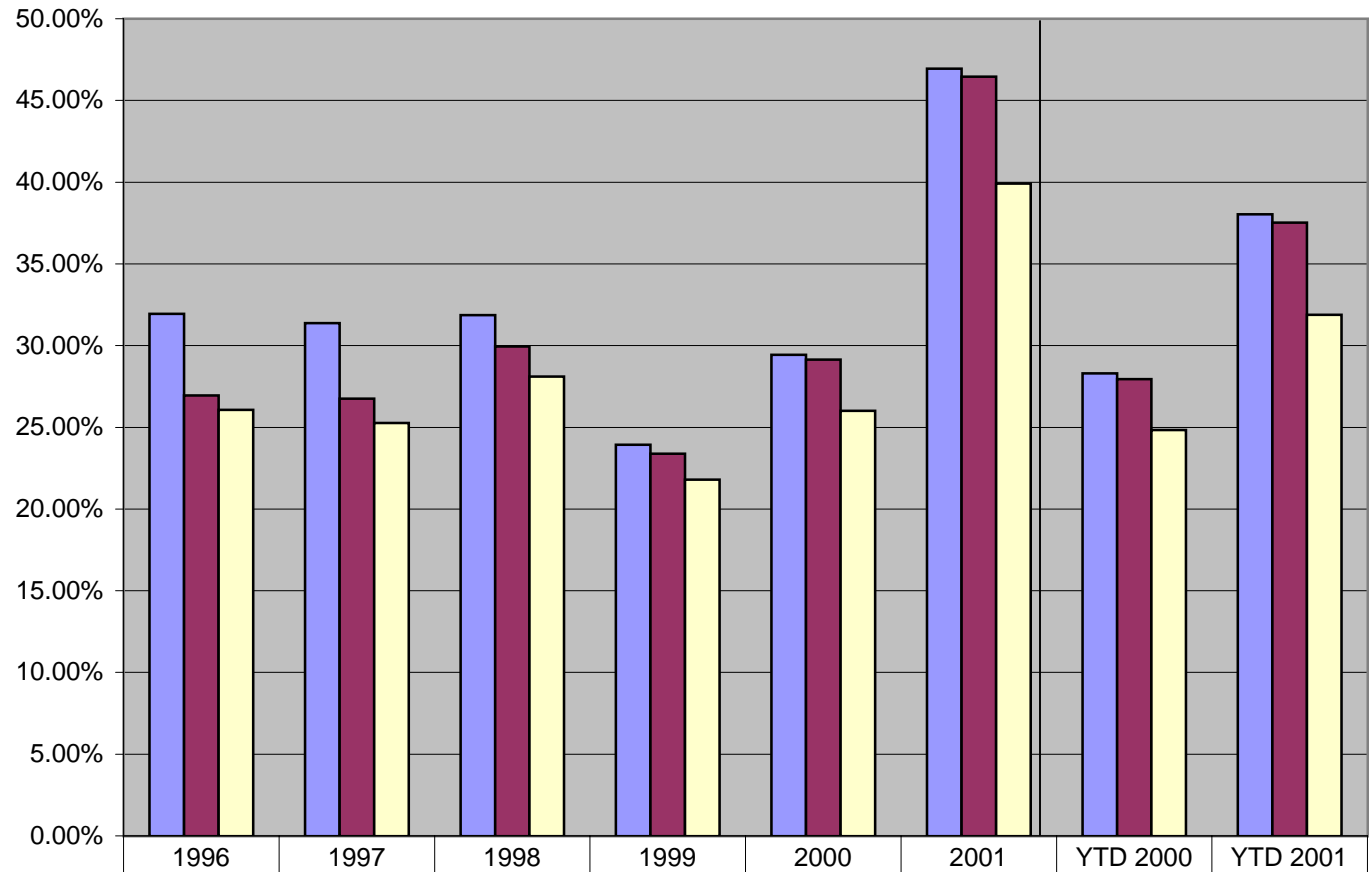
| | | | | | | |
|-----------------|-----------------|----------------|-----------|-----------|--------------|-------------|
| Slovakia | Belize | Croatia | Guatemala | Kenya | Pakistan | Sri Lanka |
| South Africa | Bolivia | Czech Republic | Guinea | Kyrgystan | Panama | St Lucia Is |
| Thailand | Brazil | Dominica Is | Guyana | Latvia | Paraguay | Tunisia |
| Trin & Tobago | Bulgaria | Dominican Rep | Haiti | Lithuania | Peru | Venezuela |
| Turkey | Cameroon | Ecuador | Honduras | Mali | Philippines | Zimbabwe |
| Albania | Cen African Rep | Egypt | Hungary | Mauritius | Poland | |
| Antigua Barbuda | Chile | El Salvador | India | Moldova | Romania | |
| Argentina | Colombia | Estonia | Indonesia | Namibia | Sierra Leone | |
| Bahrain | Costa Rica | Georgia | Jamaica | Niger | Senegal | |
| Bangladesh | Cote d'Ivoire | Gabon | Jordan | Oman | Swaziland | |

TOTAL SS WIRE IMPORTS



| | | | | | | | | |
|--|--------|--------|--------|--------|--------|--------|--------|--------|
| Total Imports | 27,324 | 29,910 | 30,730 | 24,766 | 31,340 | 31,100 | 16,046 | 16,486 |
| Total Imports Less NAFTA | 23,057 | 25,488 | 28,862 | 24,208 | 31,028 | 30,779 | 15,843 | 16,264 |
| Total Imports Less NAFTA and Developing Country Exclusions | 22,293 | 24,072 | 27,100 | 22,562 | 27,684 | 26,439 | 14,077 | 13,825 |

U.S. SS Wire Imports As a % of U.S. Production (as defined by the ITC)



| | | | | | | | | |
|--|--------|--------|--------|--------|--------|--------|--------|--------|
| Total Imports | 31.94% | 31.38% | 31.87% | 23.93% | 29.44% | 46.95% | 28.30% | 38.03% |
| Total Imports Less NAFTA | 26.95% | 26.74% | 29.94% | 23.39% | 29.15% | 46.46% | 27.94% | 37.52% |
| Total Imports Less NAFTA and Developing Country Exclusions | 26.06% | 25.26% | 28.11% | 21.80% | 26.00% | 39.91% | 24.83% | 31.89% |

SS Wire Imports as a Percentage of U.S. Production

| | 1996 | 1997 | 1998 | 1999 | 2000 | 2001 | YTD 2000 | YTD 2001 |
|---|--------|--------|--------|---------|---------|--------|----------|----------|
| Total Imports | 31.94% | 31.38% | 31.87% | 23.93% | 29.44% | 46.95% | 28.30% | 38.03% |
| Total Imports Less NAFTA | 26.95% | 26.74% | 29.94% | 23.39% | 29.15% | 46.46% | 27.94% | 37.52% |
| Total Imports Less NAFTA and Developing Country Exclusions | 26.06% | 25.26% | 28.11% | 21.80% | 26.00% | 39.91% | 24.83% | 31.89% |
| Developing Country Exclusions | 0.89% | 1.48% | 1.83% | 1.59% | 3.14% | 6.55% | 3.11% | 5.62% |
| Production | 85,551 | 95,305 | 96,413 | 103,484 | 106,457 | 66,246 | 56,698 | 43,347 |
| Total Imports | 27,324 | 29,910 | 30,730 | 24,766 | 31,340 | 31,100 | 16,046 | 16,486 |
| Total Imports Less NAFTA | 23,057 | 25,488 | 28,862 | 24,208 | 31,028 | 30,779 | 15,843 | 16,264 |
| Total Imports Less NAFTA and Developing Country Exclusions | 22,293 | 24,072 | 27,100 | 22,562 | 27,684 | 26,439 | 14,077 | 13,825 |
| Developing Country Exclusions | 764 | 1,415 | 1,761 | 1,647 | 3,344 | 4,340 | 1,765 | 2,437 |

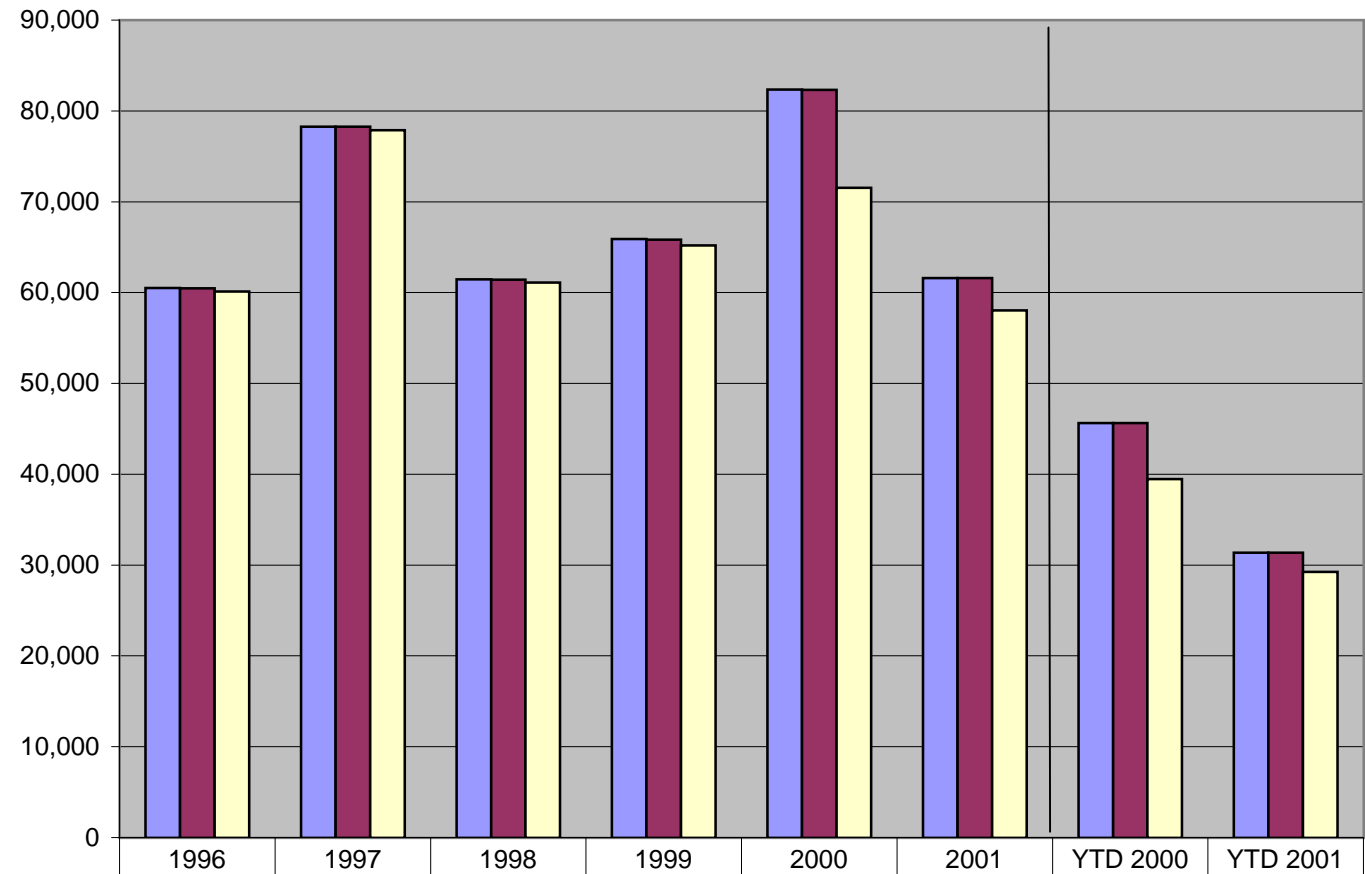
2001 Production Estimated by using the % change in commercial shipments (domestic and export, as reported by AISI) from first half 2001 to second half 2001 to approximate the % change in production in the to approximate the % change in production in the second half of 2001:

Year 2001 = (First Half 2001 Production)+((1+% Change in Shipments from 1st Half 2001)*First Half 2001 Production)

Developing Country Exclusions

| | | | | | |
|-----------------|----------------|-----------|-----------|--------------|---------------|
| Albania | Colombia | Gabon | Kyrgystan | Peru | Trin & Tobago |
| Antigua Barbuda | Costa Rica | Guatemala | Latvia | Philippines | Tunisia |
| Argentina | Cote d'Ivoire | Guinea | Lithuania | Poland | Turkey |
| Bahrain | Croatia | Guyana | Mali | Romania | Venezuela |
| Bangladesh | Czech Republic | Haiti | Mauritius | Sierra Leone | Zimbabwe |
| Belize | Dominica Is | Honduras | Moldova | Senegal | |
| Bolivia | Dominican Rep | Hungary | Namibia | Slovakia | |
| Brazil | Ecuador | India | Niger | South Africa | |
| Bulgaria | Egypt | Indonesia | Oman | Swaziland | |
| Cameroon | El Salvador | Jamaica | Pakistan | Sri Lanka | |
| Cen African Rep | Estonia | Jordan | Panama | St Lucia Is | |
| Chile | Georgia | Kenya | Paraguay | Thailand | |

TOTAL SS ROD IMPORTS



| | | | | | | | | |
|--|--------|--------|--------|--------|--------|--------|--------|--------|
| Total Imports | 60,503 | 78,264 | 61,439 | 65,882 | 82,344 | 61,599 | 45,647 | 31,365 |
| Total Imports Less NAFTA | 60,459 | 78,262 | 61,438 | 65,829 | 82,302 | 61,599 | 45,620 | 31,365 |
| Total Imports Less NAFTA and Developing Country Exclusions | 60,120 | 77,877 | 61,094 | 65,191 | 71,532 | 58,047 | 39,455 | 29,252 |

SS Rod Imports as a Percentage of U.S. Production

| | 1996 | 1997 | 1998 | 1999 | 2000 | 2001 | YTD 2000 | YTD 2001 |
|---|--------|--------|--------|--------|--------|--------|----------|----------|
| Total Imports | 60,503 | 78,264 | 61,439 | 65,882 | 82,344 | 61,599 | 45,647 | 31,365 |
| Total Imports Less NAFTA | 60,459 | 78,262 | 61,438 | 65,829 | 82,302 | 61,599 | 45,620 | 31,365 |
| Total Imports Less NAFTA and Developing Country Exclusions | 60,120 | 77,877 | 61,094 | 65,191 | 71,532 | 58,047 | 39,455 | 29,252 |
| Developing Country Exclusions | 338 | 387 | 341 | 640 | 10,771 | 3,550 | 6,166 | 2,113 |

Developing Country Exclusions

| | | | | | |
|-----------------|---------------|-----------|-----------|--------------|---------------|
| Albania | Colombia | Gabon | Kyrgystan | Peru | Trin & Tobago |
| Antigua Barbuda | Costa Rica | Guatemala | Latvia | Philippines | Tunisia |
| Argentina | Cote d'Ivoire | Guinea | Lithuania | Poland | Turkey |
| Bahrain | Croatia | Guyana | Mali | Romania | Venezuela |
| Bangladesh | Czech Republi | Haiti | Mauritius | Sierra Leone | Zimbabwe |
| Belize | Dominica Is | Honduras | Moldova | Senegal | |
| Bolivia | Dominican Rep | Hungary | Namibia | Slovakia | |
| Brazil | Ecuador | India | Niger | South Africa | |
| Bulgaria | Egypt | Indonesia | Oman | Swaziland | |
| Cameroon | El Salvador | Jamaica | Pakistan | Sri Lanka | |
| Cen African Rep | Estonia | Jordan | Panama | St Lucia Is | |
| Chile | Georgia | Kenya | Paraguay | Thailand | |