

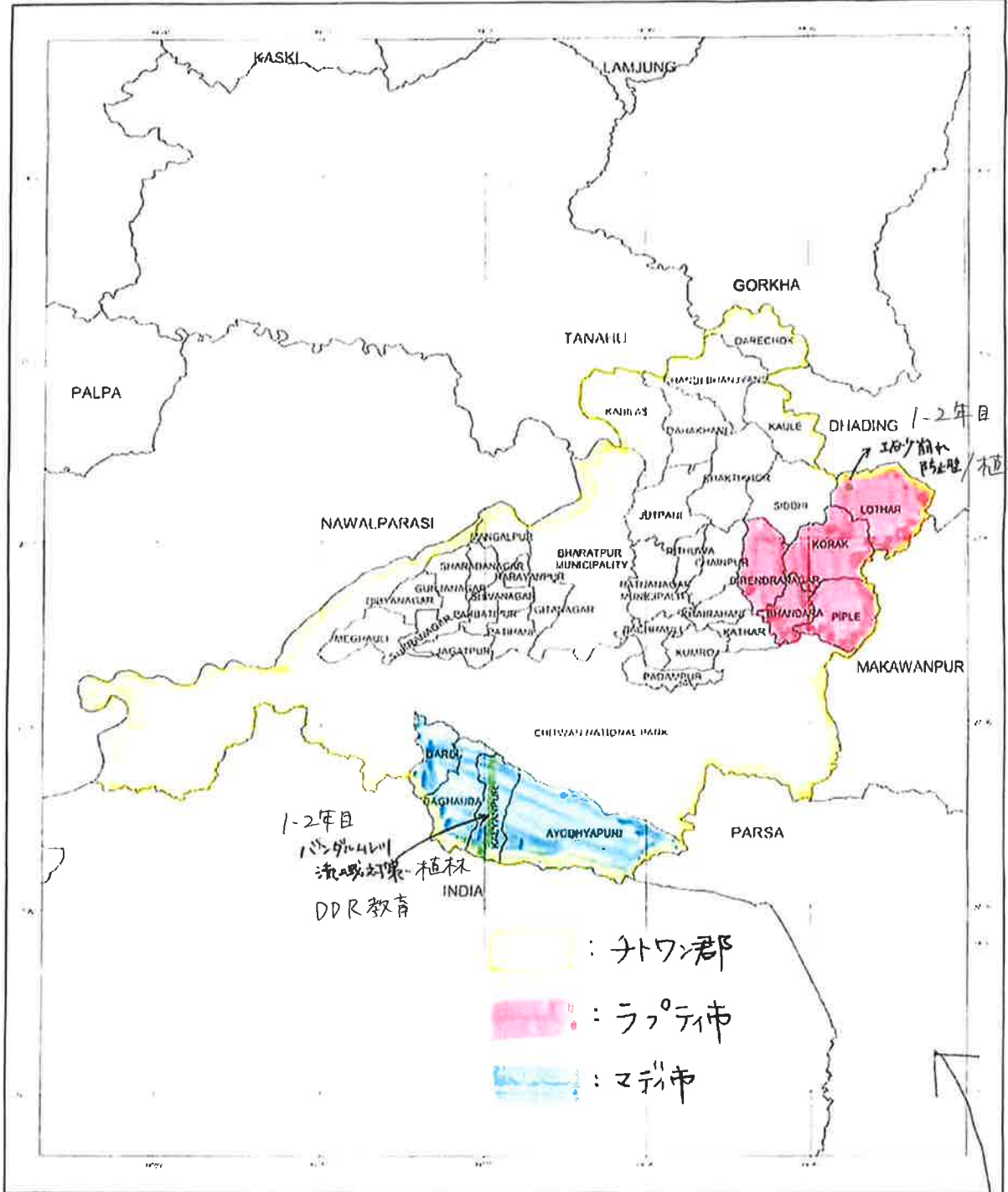
1年目:平成29年度  
 2年目:平成30年度

事業地:ネトワン郡

CHITAWAN DISTRICT

ZONE : NARAYANI

District Code : 35



SCALE 1 : 375000

LEGEND	
—	District Boundary
—	VDC Boundary
MORANG	District Name
BUKHEL	VDC Name

HORIZONTAL DATUM  
 Spheroid Everest 1830  
 Projection MUTM  
 Origin Longitude 84° E, Latitude 0° N  
 False coordinates of origin 500 000 m, Easting, 0 m Northing  
 Scale Factor at Central Meridian 0.9999



DISTRICT : CHITAWAN  
 Area 2718 Sq Km.(Approx)

Map compiled from National Topographic Database of scales 1:25,000 and 1:50,000, 2002. Internal administrative boundaries are not demarcated on the ground. Map produced by the Survey Department, National Geographic Information Infrastructure Programme (NGIIP), Kathmandu.

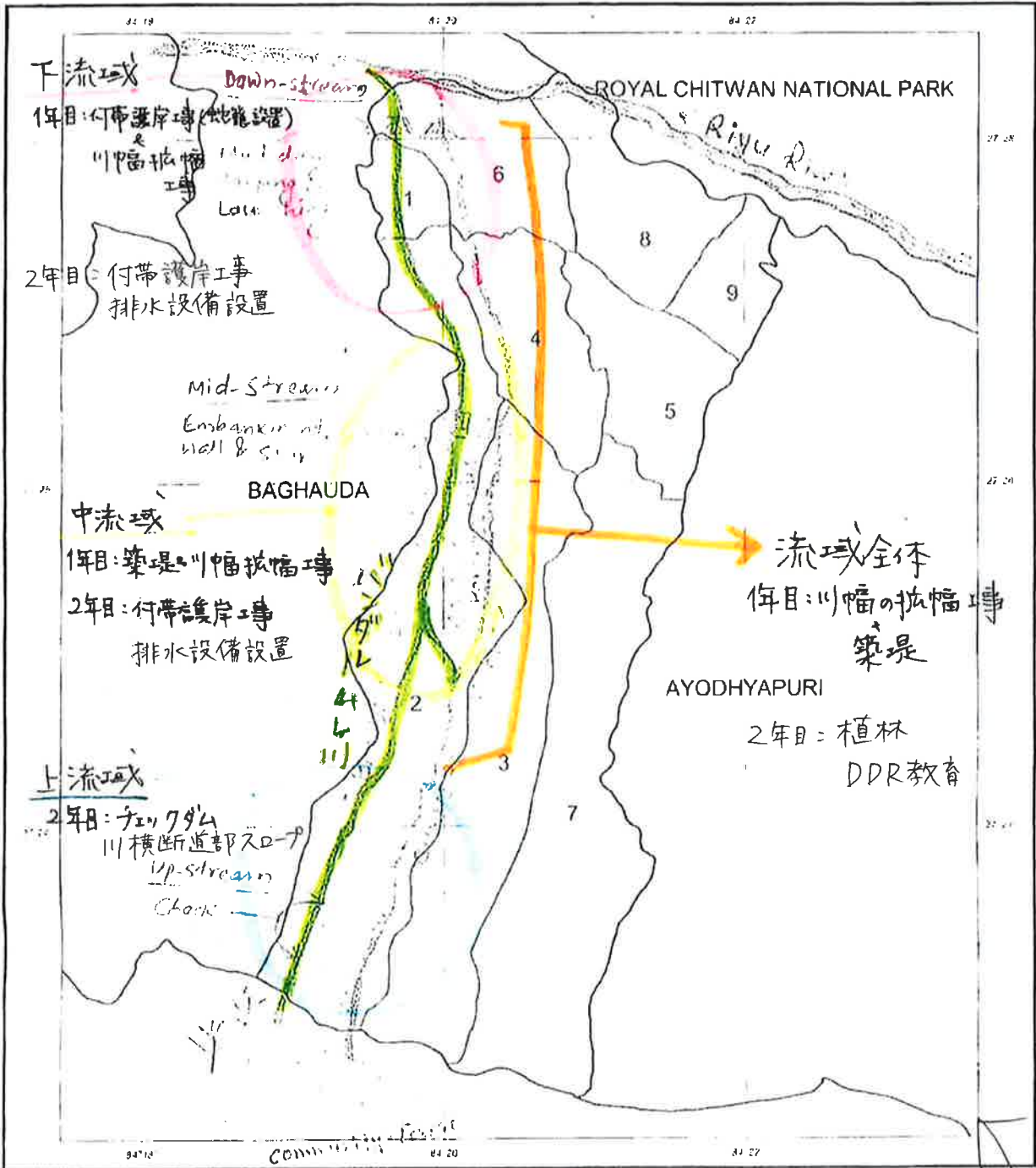
↳ Highlighted by ~~the~~ pink is Rapti Municipality (old VDCs: Bhandar Nagar, Bhandara, Piple, Bhandara, Lathar)

1年目:平成29年度  
2年目:平成30年度

事業地:ネパワン郡マディ市内 バンガラムレ川流域  
KALYANPUR VDC

DISTRICT : CHITAWAN

VDC Code : 35001



Copyright © Government of Nepal, Survey Department

SCALE 1 : 62500

CHITAWAN DISTRICT  
VDC Location Map

LEGEND	
	VDC Boundary
	Ward Boundary
<b>BUKHEL</b>	VDC Name
<b>5</b>	Ward Number

1250 0 1250 2500 Meters

HORIZONTAL DATUM

Spheroid Everest 1830  
Projection MUTM  
Origin Longitude 84° E., Latitude 0° N.  
False coordinates of origin 500 000 m Easting, 0 m Northing  
Scale Factor at Central Meridian 0.9999

KALYANPUR VDC  
Area : 34 Sq.Km. (Approx.)

Map compiled from National Topographic Database at scales 1:25 000 and 1:50 000, 2002. Internal administrative boundaries are not demarcated on the ground. Map produced by the Survey Department, National Geographic Information Infrastructure Programme, (NGIIP), Kathmandu



1年目: 平成29年度  
 2年目: 平成30年度

事業地 = ナトワン郡 180ター-14 VDC地区 (現ラブティ市)



DISTRICT LOCATION MAP

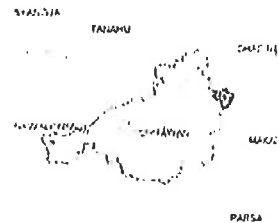
**LOTHAR VDC**  
 Area: 62 Sq. Km. (Approx)  
 Map based on National Topographic Database, 2002 - 2007.

LEGEND

- |                           |     |                  |     |
|---------------------------|-----|------------------|-----|
| Highway                   | ——— | Airport          | ✈   |
| Secondary Road            | ——— | VDC/Municipality | □   |
| Other Road                | ——— | Settlement       | ●   |
| Cart Track, Trail         | ——— | Ward No          | 1-9 |
| Bridge, Other crossing    | ——— |                  |     |
| Railway Line              | ——— |                  |     |
| International Boundary    | ——— |                  |     |
| District Boundary         | ——— |                  |     |
| VDC/Municipality Boundary | ——— |                  |     |
| Ward Boundary             | ——— |                  |     |

VDC/MUNICIPALITY LOCATION MAP

**GUNDU**  
 GUNDU  
 Dharapani  
 6



School of Kanda 2018