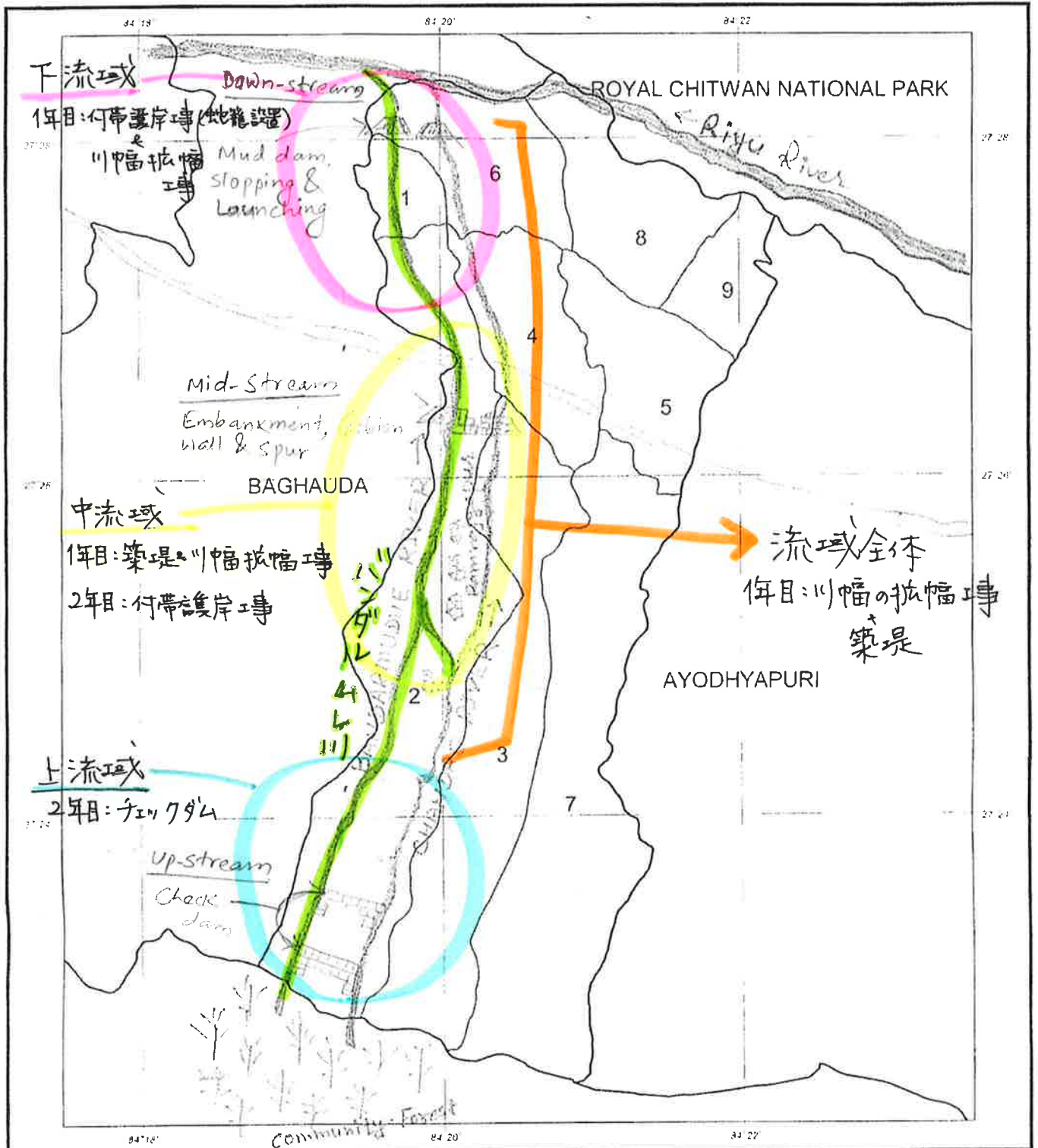


~~KALYANPUR VDC~~

DISTRICT : CHITAWAN

VDC Code : 35001



Copyright © Government of Nepal, Survey Department

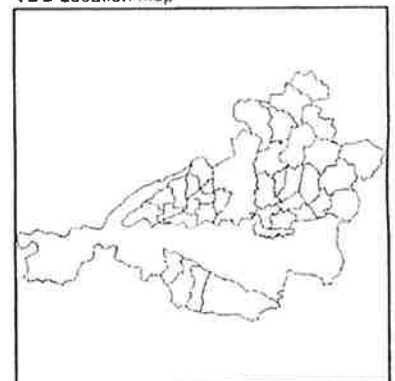
SCALE 1 : 62500

CHITAWAN DISTRICT  
 VDC Location Map

LEGEND	
	VDC Boundary
	Ward Boundary
BUKHEL	VDC Name
5	Ward Number

1250 0 1250 2500 Meters

HORIZONTAL DATUM  
 Spheroid Everest 1830  
 Projection MUTM  
 Origin Longitude 84° E., Latitude 0° N.  
 False coordinates of origin 500 000 m. Easting, 0 m. Northing  
 Scale Factor at Central Meridian 0.9999



KALYANPUR VDC  
 Area :34 Sq.Km.(Approx.)

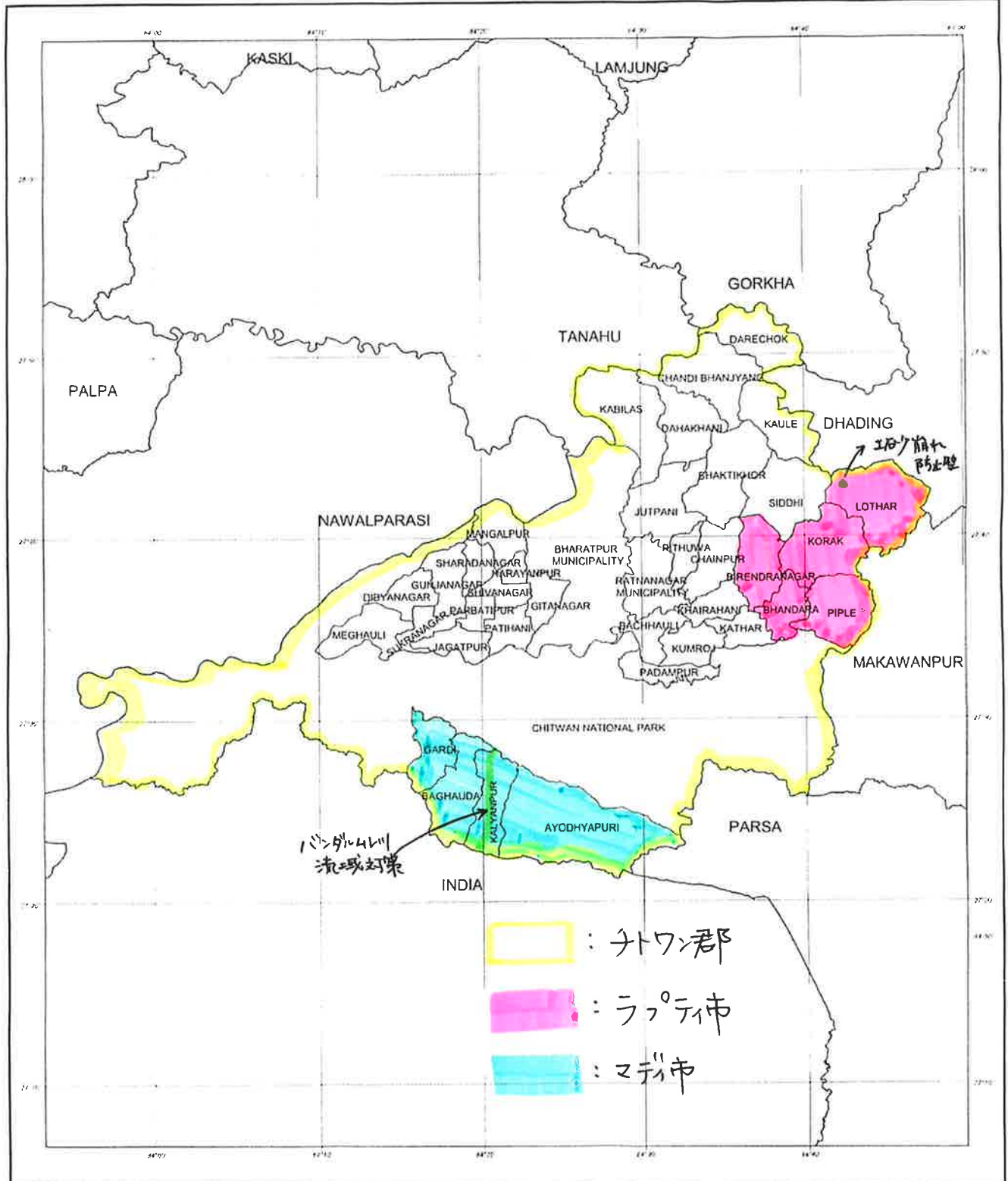
Map compiled from National Topographic Database at scales 1:25 000 and 1:50 000, 2002. Internal administrative boundaries are not demarcated on the ground. Map produced by the Survey Department, National Geographic Information Infrastructure Programme, (NGIIP), Kathmandu.

事業地：チトワン郡

# CHITAWAN DISTRICT

ZONE : NARAYANI

District Code : 35



- : チトワン郡
- : ラプティ市
- : マタリ市

SCALE 1 : 375000

LEGEND	
<span style="border-bottom: 1px solid black; width: 20px; display: inline-block;"></span>	District Boundary
<span style="border-bottom: 1px dashed black; width: 20px; display: inline-block;"></span>	VDC Boundary
<b>MORANG</b>	District Name
<b>BUKHEL</b>	VDC Name

HORIZONTAL DATUM  
 Spheroid Everest 1830  
 Projection MUTM  
 Origin Longitude 84° E, Latitude 0° N  
 False coordinates of origin 500 000 m, Easting, 0 m, Northing  
 Scale Factor at Central Meridian 0.9999



DISTRICT : CHITAWAN  
 Area : 2218 Sq.Km.(Approx.)

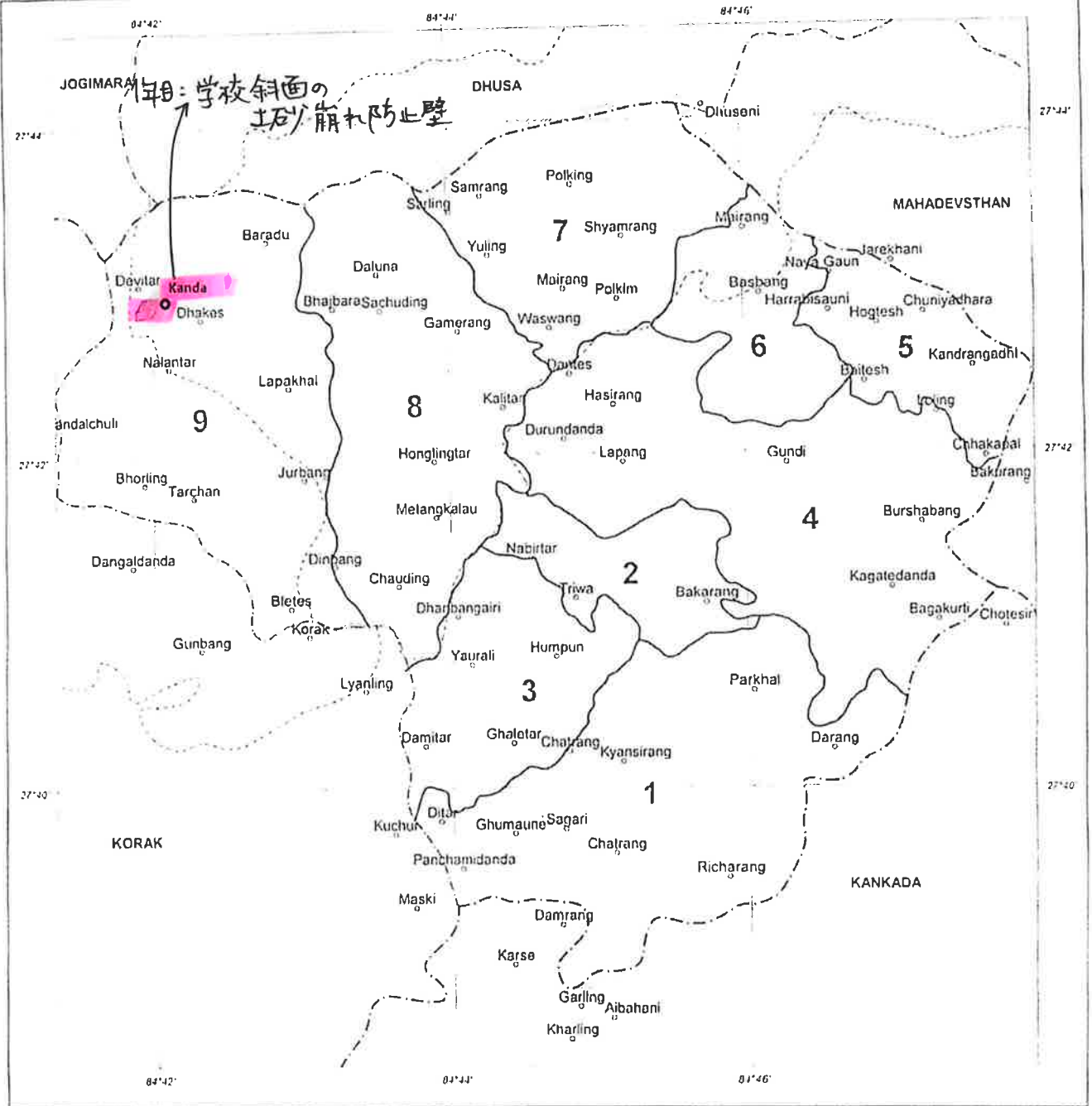
↳ Highlighted by <sup>Pink</sup> yellow color is Rapti Municipality (old VDCs: Bivendranagar, Bhandara, Piple, Korak and Lothar)

事業地 = チトワシ郡 旧ロタ-ルVDC地区

LOTHAR VDC

VDC CODE : 35024

DISTRICT : CHITAWAN



Copyright © Survey Department, Government of Nepal. SCALE 1:64000. Map produced by NGIIP, Survey Department, Government of Nepal.



**LOTHAR VDC**  
 Area: 62 Sq. Km. (Approx.)  
 Map based on National Topographic Database, 2002 - 2007.

**LEGEND**

Highway	Airport
Secondary Road	VDC/Municipality
Other Road	Settlement
Cart Track, Trail	Ward No.
Bridge, Other crossing	
Railway Line	
International Boundary	
District Boundary	
VDC/Municipality Boundary	
Ward Boundary	



School of Kanda 511