

# West Bank: Access and Closure

April 2008

## Physical Closures

- Jerusalem Checkpoint<sup>1</sup>
- Checkpoint
- Green Line Checkpoint<sup>2</sup>
- Partial Checkpoint
- Road Gate
- Observation Tower<sup>2</sup>
- Earthmound
- Roadblock
- Tunnel<sup>2</sup>
- Planned Tunnel
- Earth Wall
- Road Barrier
- Trench

<sup>1</sup> West Bank ID and Gaza ID holders may use only these checkpoints to access East Jerusalem.  
<sup>2</sup> Not counted in the total closure figures.

## West Bank Barrier

- Constructed
- Under Construction
- Planned Route
- Agricultural Gate<sup>2</sup>
- Military Gate<sup>2</sup>

Planned Barrier - path based on Israeli Government map, published April 2006 and ICP land seizure orders (Ministry of Defence - Seam Zone Authority).  
 Constructed Barrier - path extracted from satellite imagery and verified by field survey as of November 2007.  
<sup>2</sup> Forty-five of the eighty-seven Barrier gates are open to Palestinians with appropriate permits.

## Access

### Closed and Restricted Areas

- Israeli military base  
Access is prohibited
- Israeli closed military area  
Access is prohibited
- Existing and projected 'closed areas' behind the Barrier  
Access is limited to permit holders

### Israeli Settlements

- Outpost
- Land cultivated by settlers
- Settlement municipal area
- Settlement built-up and outer limit

### Palestinian Areas

- Built-up
- < 500 Residents
- 500 - 20,000
- > 20,000

### Roads

- Prohibited or Restricted Palestinian vehicle use
- Main road
- Other road

### Oslo Interim Agreement (1994-1999)

- Area A<sup>1</sup>
- Area B<sup>2</sup>
- Special Case (H2)<sup>3</sup>
- Intended Nature Reserve
- Area C<sup>4</sup>

- 1 - Full Palestinian civil and security control
- 2 - Full Palestinian civil control and joint Israeli-Palestinian security control
- 3 - Hebron Agreement
- 4 - Full Israeli control over security, planning and construction

## Regional Context



## The West Bank Barrier

A complex series of concrete walls, electronic fences, observation towers, trenches, patrol roads and razor wire, used to control Palestinian pedestrian and vehicular movement.



BARRIER GATE - Allows restricted movement through the West Bank Barrier to Palestinian lands and to Israel. Permits are required for Palestinians to pass through a gate.

## Closure

A policy of physical barriers, permit requirements and other administrative restrictions used to control Palestinian pedestrian and vehicular movement.



CHECKPOINT - A barrier staffed by IDF and/or Border Police with observation towers and/or other physical structures used to control pedestrian and vehicular access.

PARTIAL CHECKPOINT - An established checkpoint operating periodically.



EARTH MOUND - A mound of rubble, dirt and/or rocks used to obstruct vehicle access.



TUNNEL - An underpass beneath roads that are primarily for settler use.



ROADBLOCK - A series of 1 metre concrete blocks used to obstruct vehicle access.



TRENCH - A ditch used to prevent vehicle crossing.



ROAD GATE - A metal gate, often manned by IDF, used to control movement along roads.

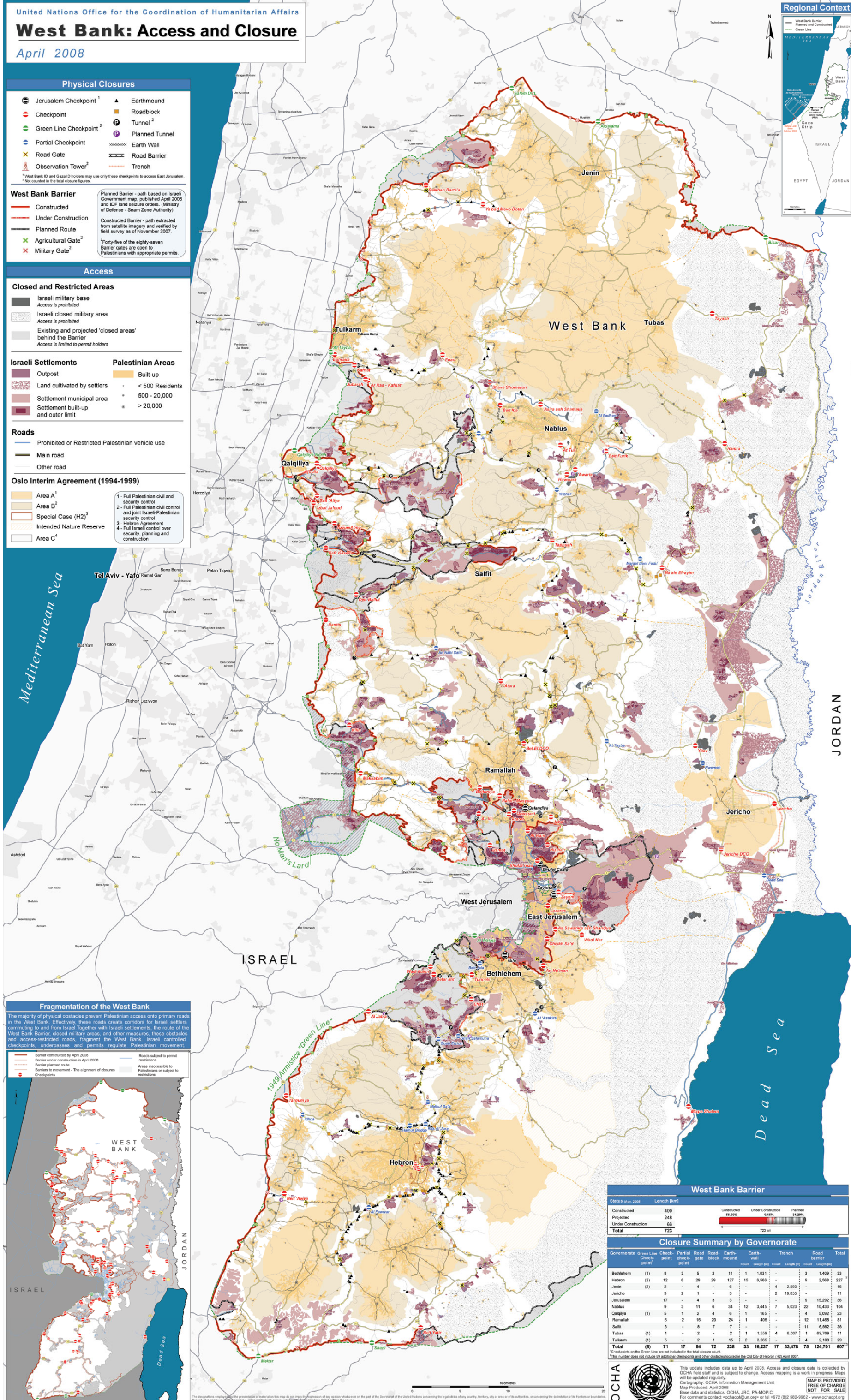


ROAD BARRIER - Continuous fencing which prevents Palestinian vehicular, agricultural and pedestrian access to roads used by Israeli settlers.

## The Permit System



Palestinians are required by the IDF to obtain various permits to facilitate movement through checkpoints to reach East Jerusalem and other West Bank areas including those located between the Barrier and the Green Line. Permits vary depending on location, person and purpose.



## Fragmentation of the West Bank

The majority of physical obstacles prevent Palestinian access onto primary roads in the West Bank. Effectively, these roads create corridors for Israeli settlers commuting to and from Israel. Together with Israeli settlements, the route of the West Bank Barrier, closed military areas, and other measures, these obstacles and access-restricted roads, fragment the West Bank. Israeli controlled checkpoints, underpasses and permits regulate Palestinian movement.

- Barrier constructed by April 2008
- Barrier under construction in April 2008
- Barrier planned route
- Barriers to movement - The alignment of closures
- Checkpoints
- Roads subject to permit restrictions
- Areas inaccessible to Palestinians or subject to restrictions



## West Bank Barrier

Status (Apr. 2008)	Length [km]
Constructed	400
Projected	248
Under Construction	66
<b>Total</b>	<b>723</b>

Percentage of barrier types: Constructed 55.3%, Under Construction 9.1%, Planned 35.6%

## Closure Summary by Governorate

Governorate	Green Line Checkpoint	Partial Checkpoint	Road Gate	Roadblock	Earthmound	Earth Wall	Trench	Road Barrier	Total
Bethlehem	(1)	8	3	5	2	11	1	1,031	33
Hebron	(2)	12	6	29	29	127	15	6,966	227
Jenin	(2)	2	-	4	-	6	-	2,593	16
Jericho	(3)	2	1	-	-	3	-	19,855	11
Jerusalem	(17)	-	4	3	3	-	-	9	15,292
Nablus	(9)	3	11	6	34	12	3,445	7	10,432
Qalqilya	(1)	5	1	2	4	6	1	165	4,502
Ramallah	(6)	2	16	20	24	1	406	-	12,148
Salfit	(3)	-	8	7	7	-	-	-	11,662
Tubas	(1)	1	-	2	-	2	1	1,559	4,007
Tulkarm	(1)	5	-	2	1	15	2	3,065	4,210
<b>Total</b>	<b>(8)</b>	<b>71</b>	<b>17</b>	<b>64</b>	<b>72</b>	<b>238</b>	<b>33</b>	<b>16,237</b>	<b>17</b>
								<b>33,478</b>	<b>75</b>
								<b>124,701</b>	<b>607</b>

\* Checkpoints on the Green Line are not included in the total closure count.  
 \* This number does not include 69 additional checkpoints and other obstacles located in the Old City of Hebron (H2) April 2007.

This update includes data up to April 2008. Access and closure data is collected by OCHA field staff and is subject to change. Access mapping is a work in progress. Maps will be updated regularly.  
 Cartography: OCHA Information Management Unit  
 Map Produced: April 2008  
 Base data and statistics: OCHA, JRC, PA-MOPIC  
 For comments contact: ochaup@un.org or tel +972 (0)2 582-9962 - www.ochaopt.org

