

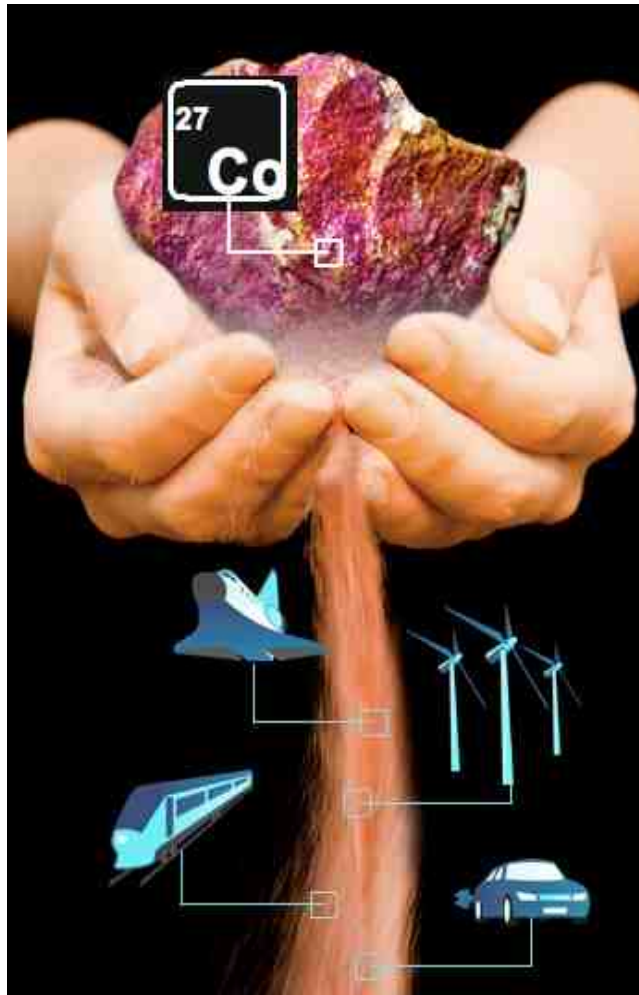


# **EU Raw Materials Initiative: actions taken to promote sustainable mining**

***G7 CONNEX Initiative International Conference on  
Capacity Building and Transparency  
Tokyo, Japan - 15 September, 2016***

***Mattia Pellegrini - Head of Unit  
Resource Efficiency and Raw Materials  
DG GROW, EC***

# I. Policy framework Raw Materials Initiative



- ✓ **Integrated strategy to respond to the different challenges related to access to non-energy and non-agricultural raw materials**
- ✓ **Aim:** securing sustainable supplies of raw materials
- ✓ **Scope:** Non-energy, non-agricultural raw materials



### Main policy areas related to sustainable mining:

1. European Innovation Partnership on Raw Materials and its commitments related to sustainable mining
2. Protecting biodiversity around mining sites
3. Sustainable exploitation and mining technologies
4. Social License to Operate
5. Capacity Building for institutions relevant for sustainable mining
6. Sustainable Sourcing
7. Services related to Earth monitoring (Copernicus)
8. Public Acceptance Awareness Raising and Trust
9. Raw Materials Scoreboard

# 1a. European Innovation Partnership on Raw Materials



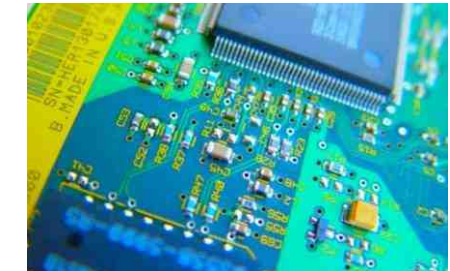
## ✓ I. Technology Pillar

- ✓ I.A Raw materials research and innovation coordination
- ✓ I.B Technologies for primary and secondary raw materials' production
- ✓ I.C Substitution of raw materials



## ✓ II. Non-Technology Policy Pillar

- ✓ II.A Improving Europe's raw materials framework conditions
- ✓ II.B Improving Europe's waste management framework conditions and excellence
- ✓ II.C Knowledge, skills and raw materials flows



## ✓ III International Cooperation Pillar

- ✓ III.1 Technology
- ✓ III.2 Global Raw Materials Governance and Dialogues
- ✓ III.3 Health, Safety and Environment
- ✓ III.4 Skills, Education and Knowledge
- ✓ III.5 Investment activities





## 1b. Raw Materials Commitments

In the context of the European Innovation Partnership on Raw Materials, its numerous commitments are related to sustainable mining (<https://ec.europa.eu/growth/tools-databases/eip-raw-materials/en/call-commitments>), for instance:

- ✓ **REMIND** (EU Responsible mining demonstrations: best practice and capacity building)
- ✓ **Stand4Mines** (Standardization of sustainable mining management systems)
- ✓ **SUMAN2000** (Sustainable non - energy Mineral extraction Activities in Natura 2000 protected sites)
- ✓ **SUSMINE** (Sustainable Mining)
- ✓ **TailingsDamScavenger** (Enabling the recovery of metals and other valuable materials from mine waste slurries)
- ✓ **MIREU** (Mining regions of EU)
- ✓ **pHMine** (Solutions to reduce the environmental impact of effluents, wastes and soils affections derived from the metallic mineral extractive activity)
- ✓ **ITERAMS** (Integrated mineral technologies for more sustainable raw material supply)
- ✓ **ENSQM** (European Network for Sustainable Quarrying and Mining)
- ✓ **BioDIMA** (Biodiversity IMA tool)
- ✓ **Mineland** (Mineral resources in sustainable land-use planning)
- ✓ **SustainableMiningStandard** (Multiplication of the Bulgarian Sustainable Mining Standard)

## 2. Protecting biodiversity around mining sites



- ✓ **Natura 2000** is a key instrument to deliver the EU biodiversity objectives
- ✓ To promote sustainable mining and quarrying within NATURA2000, the European Commission developed guidance on '**Non-energy mineral extraction and Natura2000**'  
[http://ec.europa.eu/environment/nature/natura2000/management/docs/nee\\_n2000\\_guidance.pdf](http://ec.europa.eu/environment/nature/natura2000/management/docs/nee_n2000_guidance.pdf)
- ✓ Sustainable mining can be permitted provided that flanking measures are taken

### 3. Sustainable exploitation and mining technologies



#### **HORIZON 2020 is the EU Research and Innovation programme**

- ✓ **Work Programme 2014 – 2015** – budget spent on Sustainable exploration and mining technologies: over **€55mIn**
- ✓ **Work Programme 2016 – 2017** – indicative budget on Sustainable exploration and mining technologies: **around €50mIn.**

Examples of actions:

- ✓ SC5-13-2016-2017: New solutions for sustainable production of raw materials
- ✓ SC5-14-2016-2017: Raw materials Innovation actions

[http://ec.europa.eu/research/participants/data/ref/h2020/wp/2016\\_2017/main/h2020-wp1617-climate\\_en.pdf](http://ec.europa.eu/research/participants/data/ref/h2020/wp/2016_2017/main/h2020-wp1617-climate_en.pdf)



## 4. Social Licence to Operate



Elements of HORIZON 2020 - Work Programme 2016 – 2017 address **Social Licence to Operate** in Raw materials policy support actions (SC5-15-2016-2017) point **e) EU network of mining and metallurgy regions** (2017) :

- ✓ **'define Social Licence to Operate (SLO) guidelines** and develop a toolbox improving communication and transparency during the permitting and licensing procedures and in the production cycle (from exploration, mine operation to rehabilitation and residues and tailings management) by mobilising all the concerned EU's stakeholders (relevant authorities municipalities, mining and other relevant companies, civil society organisations and local communities) which can be affected by a mining project';
- ✓ 'use a multidisciplinary approach, involving in particular social sciences and humanities, in order to better understand the different aspects of **Social Licence to Operate (SLO) in mining in a given cultural context**. Proposals should also benchmark the EU SLO guidelines and initiatives with those developed internationally (Canada, Australia, USA, etc.)';

The Commission considers that for this sub-topic, proposals requesting a contribution from the EU of up to **EUR 3 million**



## 5. Capacity Building



European Commission supports **capacity building (in developing countries)** of institutions relevant for sustainable mining:

- ✓ **Connex Initiative** – the Commission is committed to continue cooperation in this regard.
- ✓ **PanAfGeo** project aims among others at reinforcing Africa's own expertise and capacity to support responsible policy-making and management of natural resources. The EU contribution to the project will be a grant of **maximum €10mln. over 3 years.**

Moreover, the EU provides financial support and policy guidance to the following initiatives aimed at mobilising the domestic revenues in partner countries:

- ✓ Extractive Global Programmatic Support (**EGPS**), Multi-donor trust fund administered by World Bank (€5mln €).
- ✓ Extractive Industries Transparency Initiative (EITI) [www.eiti.org](http://www.eiti.org) (€0,75mln 2016-2018)
- ✓ IMF Topical Trust Fund on Managing Natural Resources Wealth (EU contribution €5mln 2011-2016)
- ✓ Tax Administration Diagnostic Assessment Tool (TADAT – EU in cooperation with IMF) – EU contribution €2mln 2016-2021.



## 6. Sustainable sourcing

- ✓ **Conflict minerals** - the in 2014 proposed legislation is part of a wider EU approach on the responsible sourcing of minerals from conflict-affected regions.

Main features of the proposal are:

- ✓ Reinforcing the OECD guidance recognition of other industry schemes
  - ✓ Mandatory due diligence for upstream operators
  - ✓ Review clause
  - ✓ No focus on the DRC and ban or stigmatisation effect (unlike the Dodd Frank!)
- 
- ✓ **The EU action plan for the Circular Economy (COM(2015) 614 final)** states: *'the Commission.. promotes the sustainable sourcing of raw material globally, for example through policy dialogues, partnerships and its trade and development policy. Industry has a key role to play by making specific commitments to sustainable sourcing and cooperating across value chains.'*

## 7. Services related to Earth monitoring (Copernicus)



- ✓ **The Copernicus programme** is a cornerstone of the European Union's efforts to:
  - ✓ Monitor the Earth, its environment and ecosystems
  - ✓ Ensure that EU citizens are prepared in the face of crises, security concerns and natural or man-made disasters
- ✓ **Mining industry** is encouraged to:
  - ✓ integrate Copernicus data and information for its needs, for instance in the area of early warning systems
  - ✓ apply to the H2020 call for downstream applications (budget of 12 million €) which has been already published (deadline of applications is March 2017).
- ✓ **The EU-Africa Copernicus cooperation for sustainable development:**
  - ✓ The initiative takes place in the wider context of the Africa-EU partnership
  - ✓ In October 2015 a new funding support was approved by the European Commission for the new phase of the European-African initiative.
  - ✓ In the initial implementation phase of the initiative (2016 – 2020) three priority topics will be addressed, including long term management of natural resources;

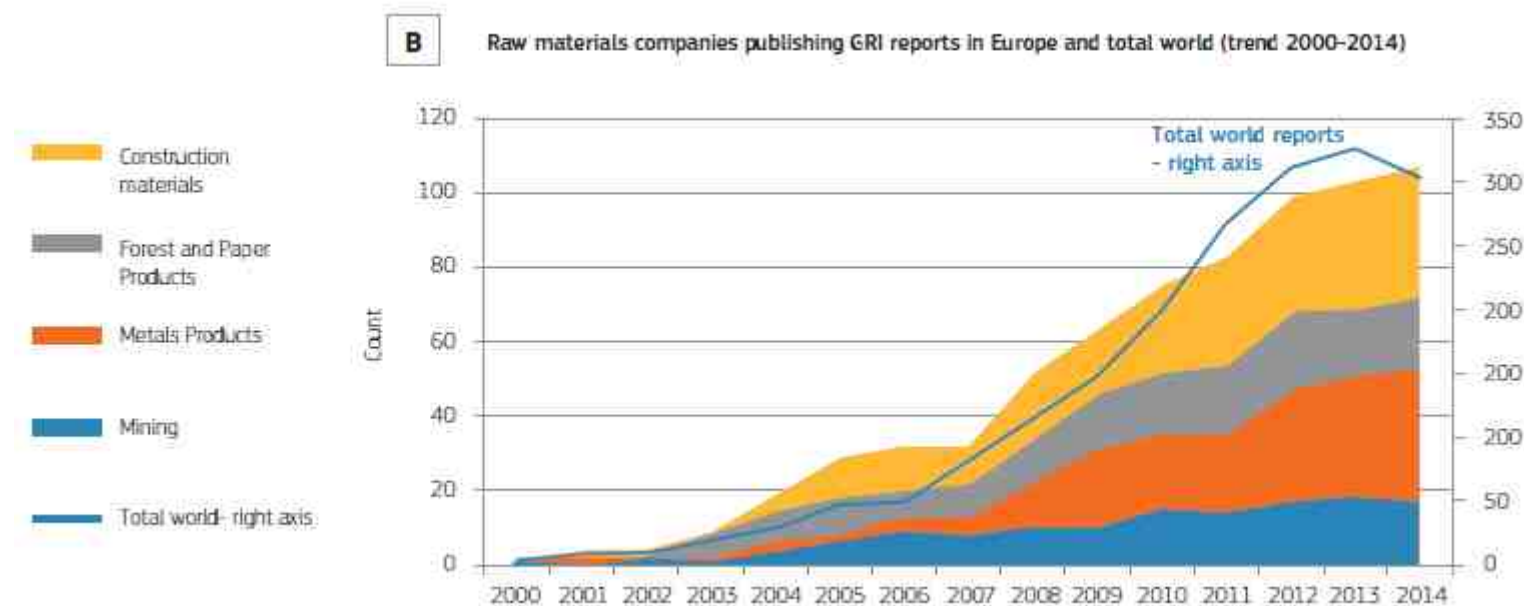


## 8. Public Awareness, Acceptance and Trust

- ✓ **COBALT project**, accomplished in March 2015, was an EU-funded project (FP7 EU contribution around €1mIn) that brought together industry, civil society, research bodies, and public authorities to stimulate a joint debate on sustainable raw material use. <http://www.cobalt-fp7.eu/>
- ✓ **EU Minerals Days** - Launching a multi-stakeholder industry led information campaign to promote raw materials exploration and extraction and education <http://www.mineralsday.eu/>
- ✓ **Raw Materials University Days** – the Commission organised 6 events aiming at attracting young people who we would like to inform about the study and career opportunities in the raw materials sector.  
<https://ec.europa.eu/growth/tools-databases/eip-raw-materials/en/content/raw-materials-university-day-%E2%80%93-lisbon-portugal-13-april-2016>
- ✓ Horizon 2020, **Raw materials Innovation actions (SC5-14-2016-2017)**:  
*'include a plan to communicate the added value of the proposal to the local communities and society ..Participation of civil society from the start of exploration until after-closure activities in a process of co-design, co-development and co-implementation is strongly encouraged'.*

## Raw Materials Scoreboard: thematic cluster on environmental & social sustainability

### >> Indicator 24: Sustainability reporting





# Thank you!

[Mattia.Pellegrini@ec.europa.eu](mailto:Mattia.Pellegrini@ec.europa.eu)

# Copernicus for the Extractive industries value chain



## Annex I. Copernicus



**Prospection and exploration**

Copernicus  
Land Monitoring  
Service

**Fight illegal mining**

**Extraction - Environmental monitoring and risk prevention**

**Mine closure / Land reclamation**

Copernicus  
Marine  
Environment  
Monitoring  
Service

**Real time monitoring of exploration and exploitation activities**

**Environmental impact control**

Copernicus  
Emergency  
Management  
Service

Mapping Component  
Early Warning Component

**Technological disaster management and control**

**Risk mitigation**

**Early Warning Systems**





***"The European Union, through its Horizon 2020 and Copernicus programmes will continue to be a driving force to help GEOSS reach its full maturity – a GEOSS which is designed for and accessible by all contributors and all users."***