



Developing the Regulatory Regime for Deep Seabed Mining

**International Symposium on the
Law of the Sea, 16-17 February
2016, Tokyo, Japan**

**Michael Lodge,
Deputy Secretary-General
International Seabed Authority**

Resources of the Area as the Common Heritage of Mankind





1994 Agreement and the birth of the International Seabed Authority

First phase: 1994 - 2000

Operational setup



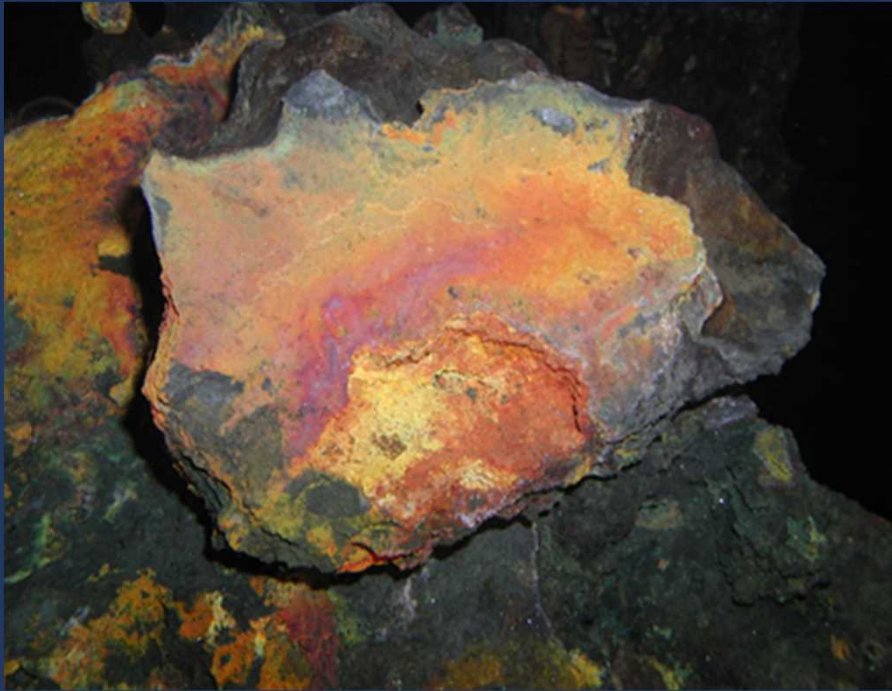
End of pioneer regime



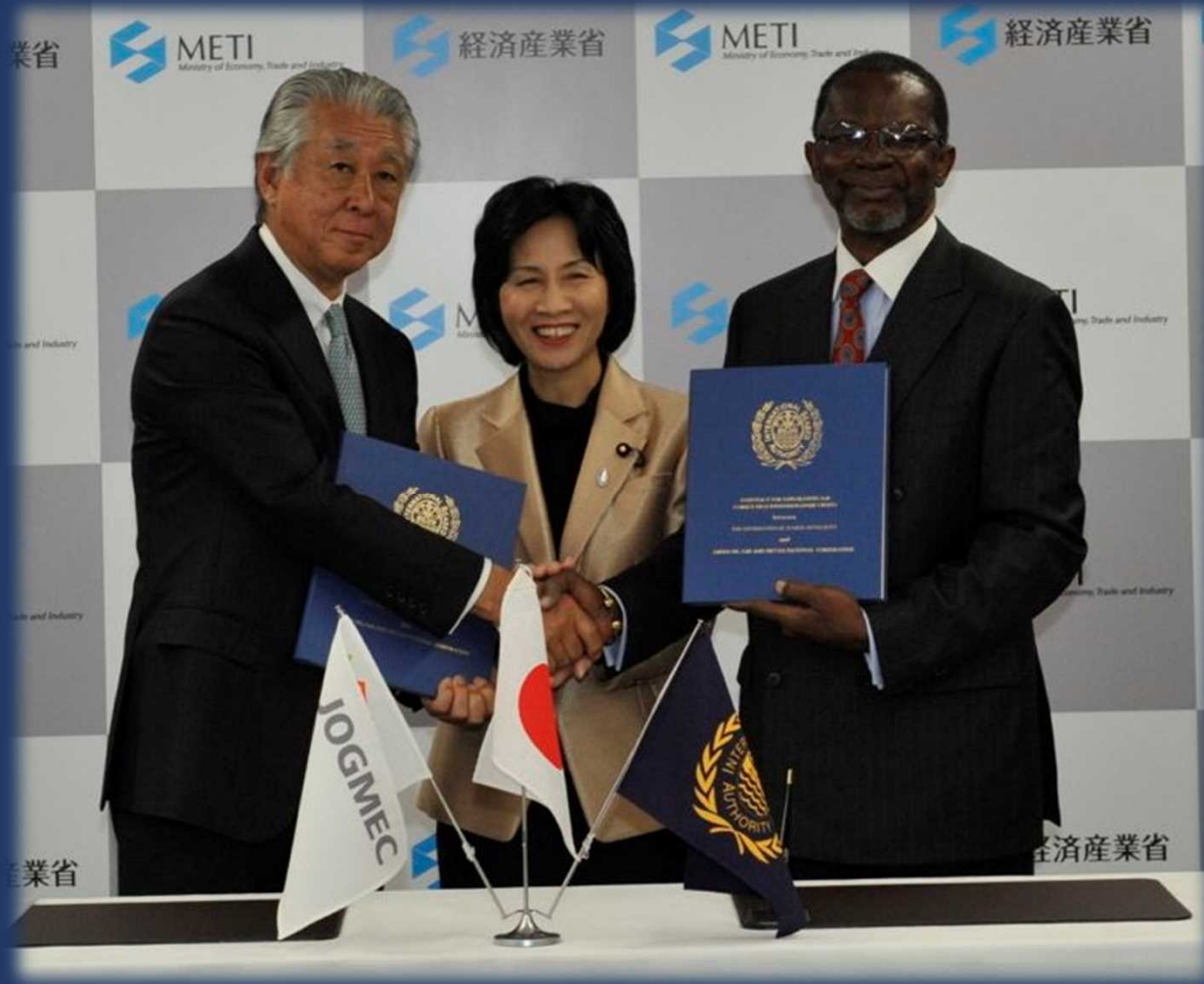
Investment in science



Second phase: 2001 - 2010

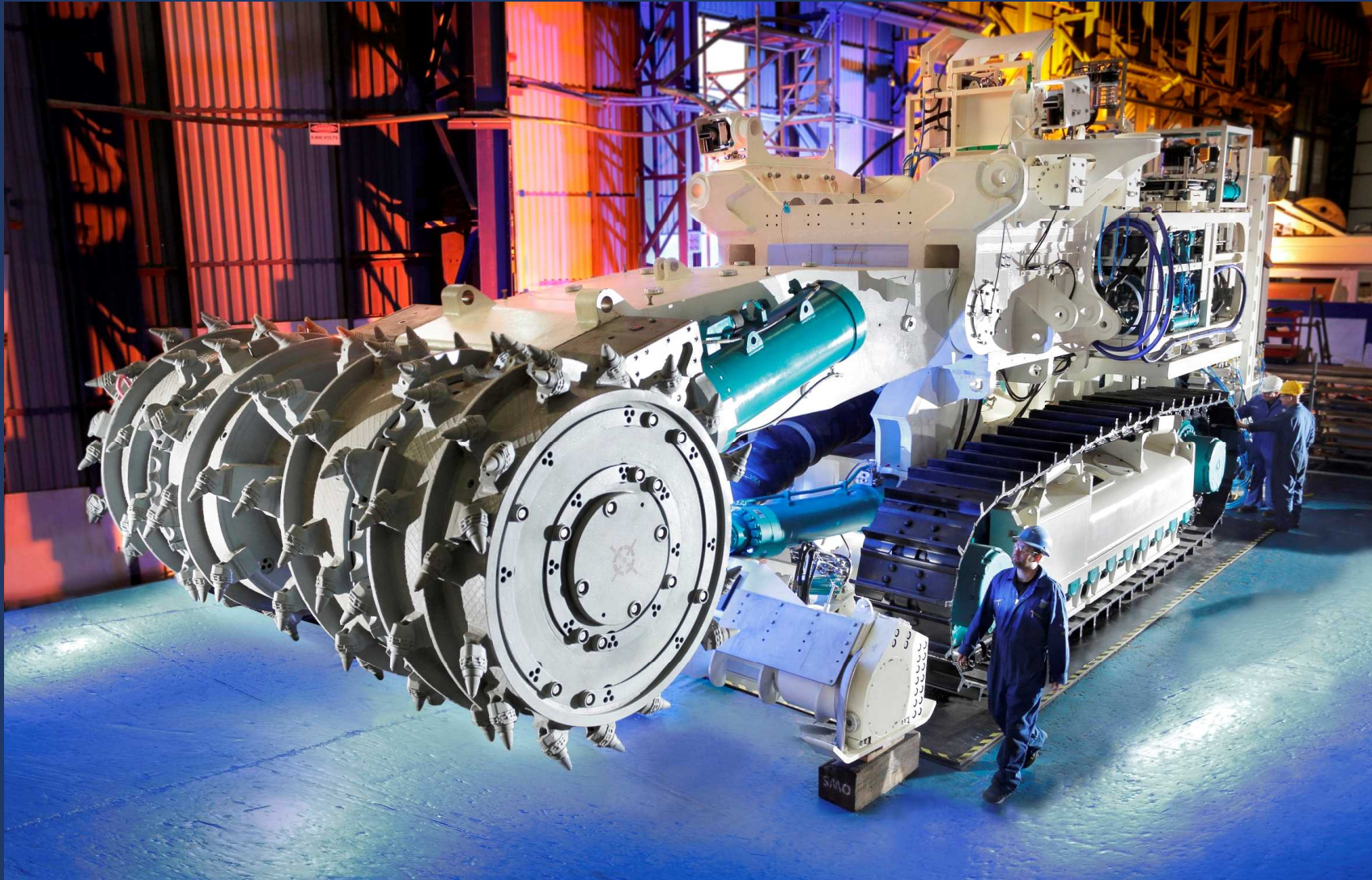


Regulations for polymetallic sulphides and cobalt-rich crusts



JOGMEC – First exploration contractor for cobalt-rich crusts, 2014

Third phase: 2011 - 2015



Third phase: 2011 - 2015



Seabed Disputes Chamber Advisory Opinion

European Union

- IFREMER
- UK Seabed Resources Ltd
- GSR NV (Belgium)
- BGR (Germany)



SIDS

- Ocean Minerals Singapore
- Cook Islands Investment Corporation
- Nauru Ocean Resources Inc
- Tonga Offshore Mining Ltd
- Marawa (Kiribati)



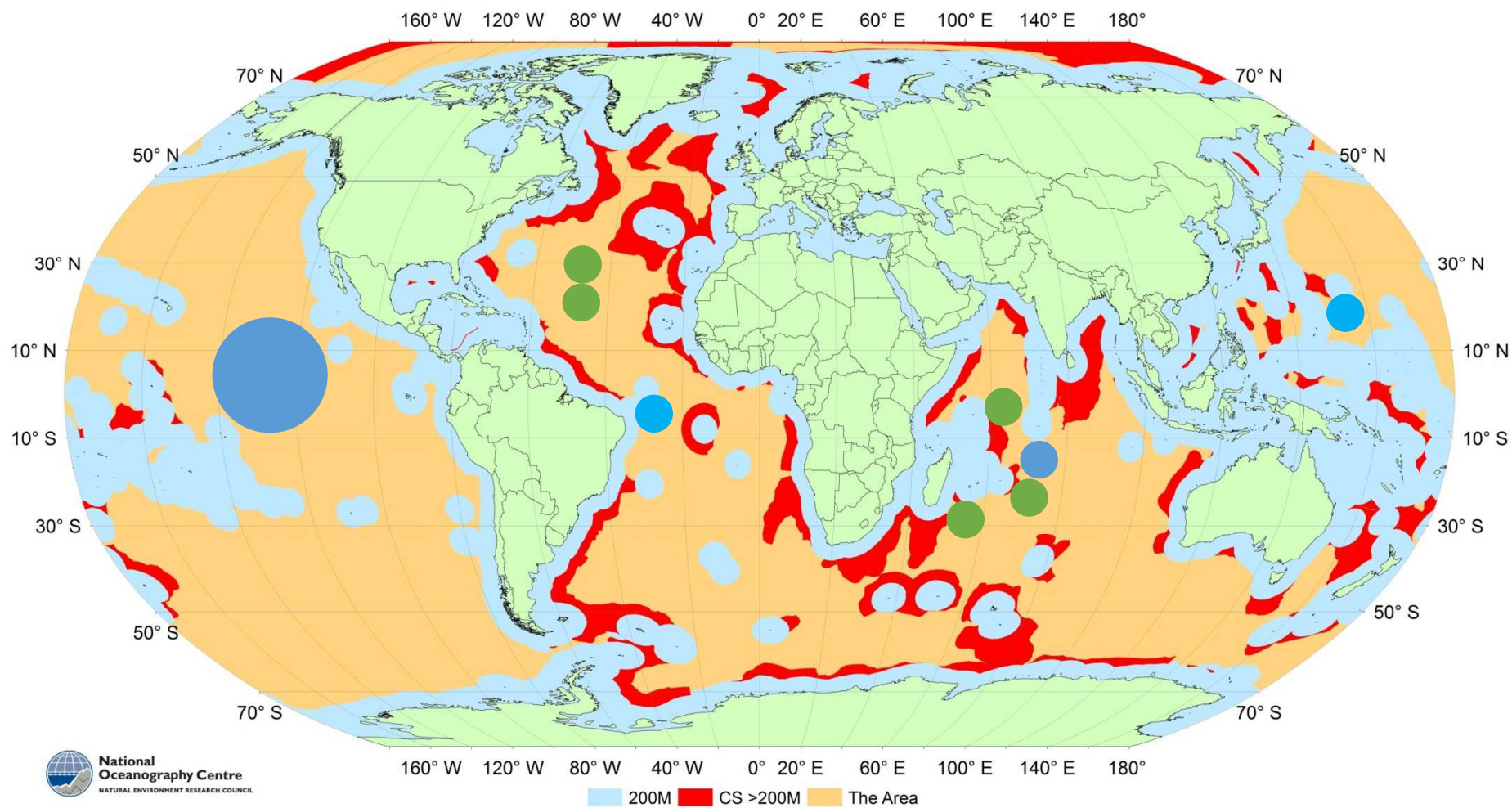
Non-EU

- Yuzhmorgeologiya
- Government of India
- Government of Republic of Korea
- China Minmetals Corporation
- COMRA
- Deep Ocean Resource Development
- JOGMEC
- Russian Federation
- CPRM (Brazil)
- Interoceanmetal Joint Organization



**27 Exploration
contracts**

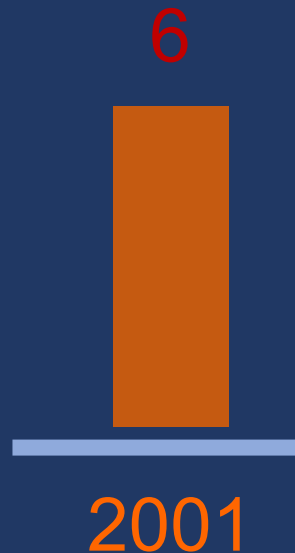




- Polymetallic nodules
- Cobalt-rich crusts
- Polymetallic sulphides

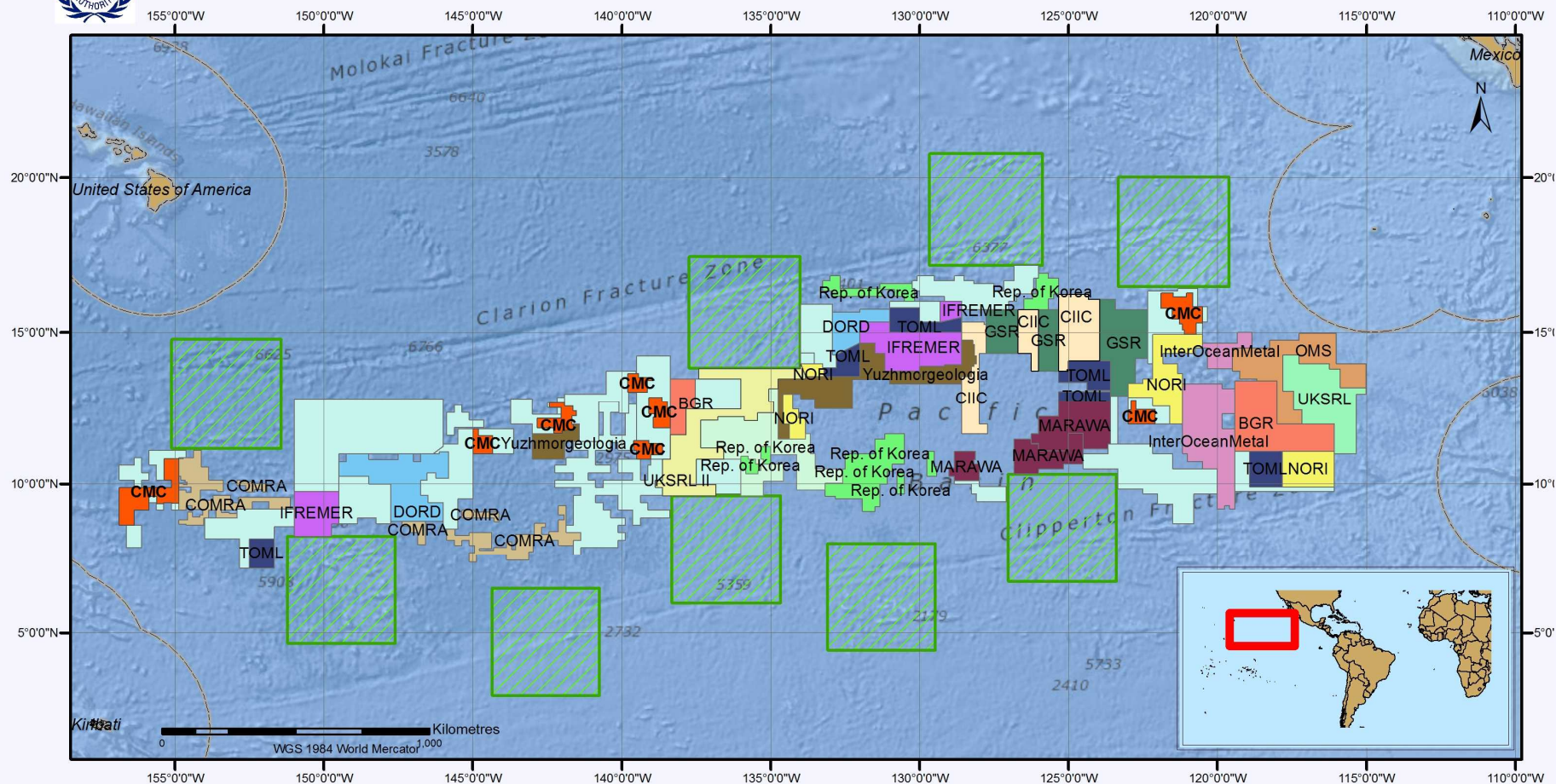
Contracts held by private sector

- States and State Enterprises
- Private sector





Polymetallic Nodules Exploration Areas in the Clarion-Clipperton Fracture Zone



- | | |
|---|---|
| China Minmetals Corporation (CMC) | Government of the Republic of Korea |
| Ocean Mineral Singapore Pte Ltd. (OMS) | Institut français de recherche pour l'exploitation de la mer (IFREMER; France) |
| Cook Islands Investment Corporation (CIIC) | InterOceanmetal (IOM; Bulgaria, Cuba, Czech Republic, Poland, Russian Fed., Slovakia) |
| Marawa Research and Exploration Ltd (Kiribati) | Nauru Ocean Resources Inc. (NORI; Nauru) |
| Bundesanstalt für Geowissenschaften und Rohstoffe (BGR; Germany) | Tonga Offshore Mining Ltd (TOML; Tonga) |
| China Ocean Mineral Resources Research and Development Association (COMRA; China) | UK Seabed Resources Ltd (UKSRL I; UK) |
| Deep Ocean Resources Development Company (DORD; Japan) | Yuzhmoregeologia (Russian Federation) |
| Global Sea Mineral Resources (GSR; Belgium) | UK Seabed Resources Ltd. (UKSRL II; UK) |
| Reserved area* | Area of particular environmental interest (APEI)** |
| | Exclusive Economic Zones |

* In the case of polymetallic nodules, the so-called parallel system provides that each application for exploration by a developed State must cover two parts of "equal estimated commercial value". One part is allocated to the applicant and the other is to become the reserved area, which is set aside for the conduct of activities by the Authority or developing States.

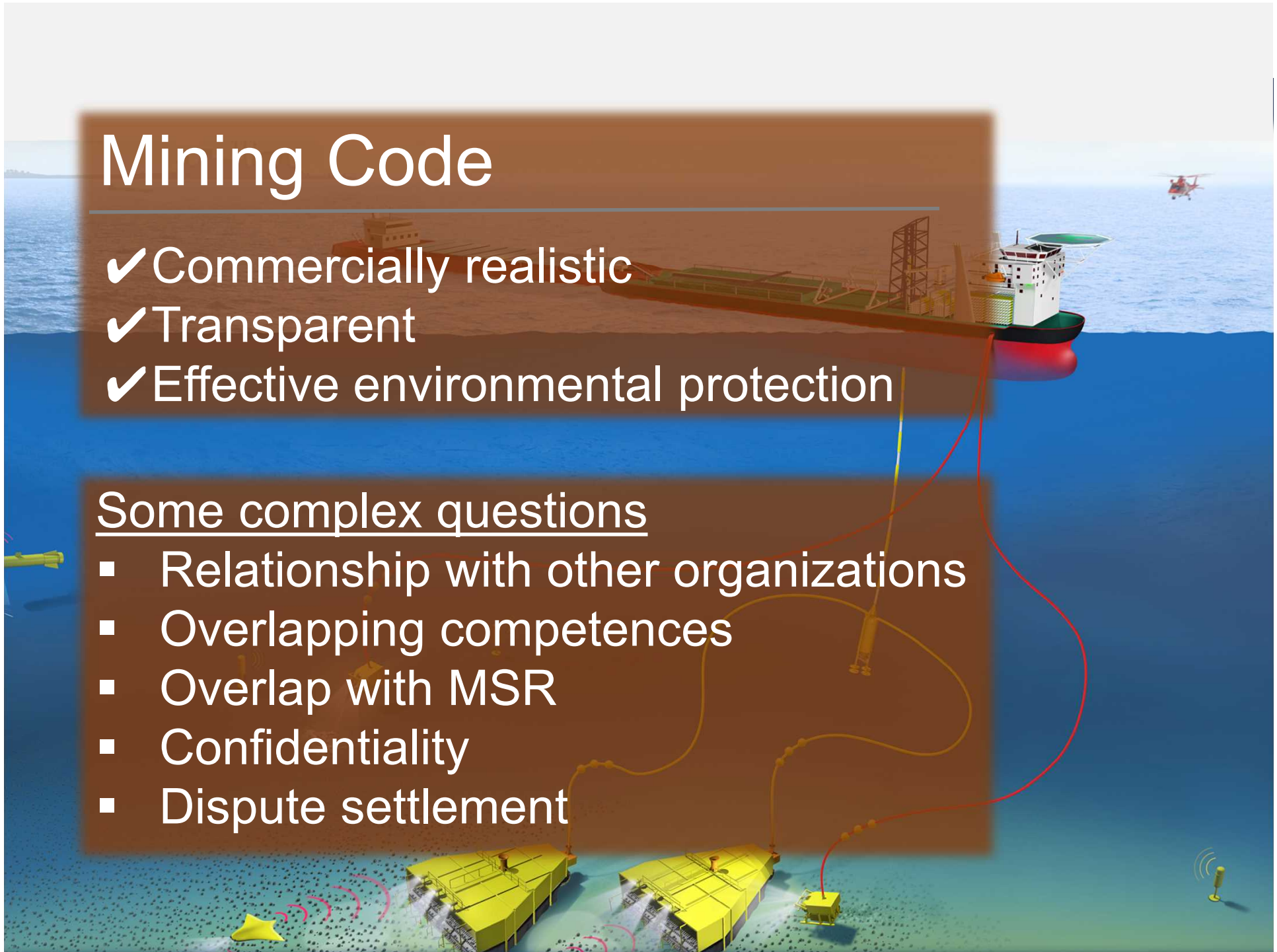
** In July 2012, the Authority adopted an environmental management plan for the Clarion-Clipperton Zone to be implemented on a provisional basis over an initial three-year period. The plan includes the designation of a network of areas of particular environmental interest (ISBA/18/C/22).

Mining Code

- ✓ Commercially realistic
- ✓ Transparent
- ✓ Effective environmental protection

Some complex questions

- Relationship with other organizations
- Overlapping competences
- Overlap with MSR
- Confidentiality
- Dispute settlement



2016 and beyond
... a new era for
the International
Seabed Authority!

