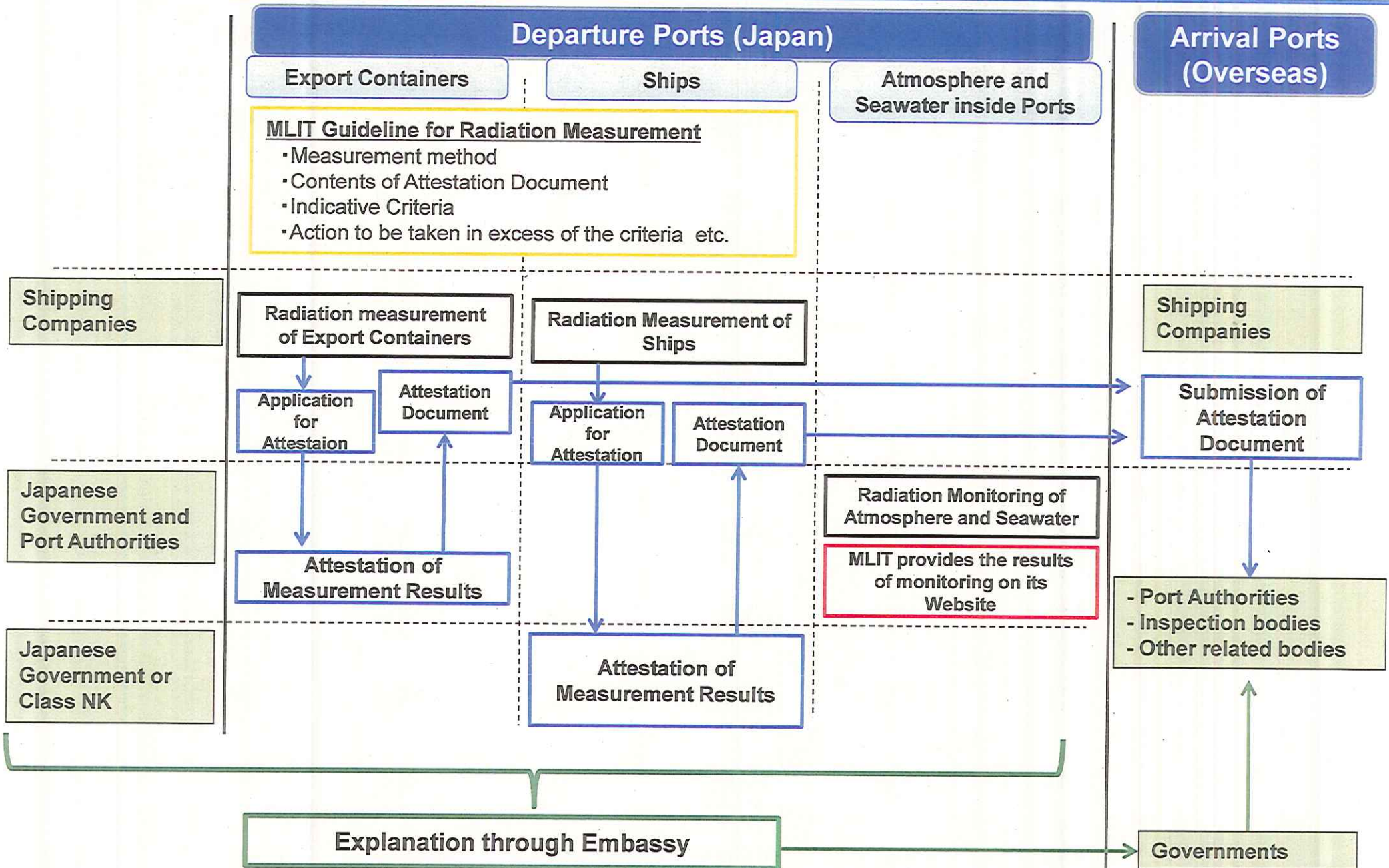


Radiation Measurement at Port in Japan (Outline)



Radiation Measurement on Containers and Ships in Port (Outline)

MLIT has developed the guideline on radiation measurement of export containers and ships in port in response to the need for information on dose rate for containers and ships from Japan. Radiation measurement on containers and ships is due to start at Yokohama Port and Tokyo Port.

1. Framework

Based on MLIT guidelines, port authorities or shipping companies measure the dose rate of radiation for containers and ships, and public institutions (government of Japan, port authorities, or Class NK) issue the attestation for radiation dose measurement on the request from shipping companies.

2. Method

Radiation measurement will be conducted at container terminal gates and decks of ships, using mobile-type radiation meters.

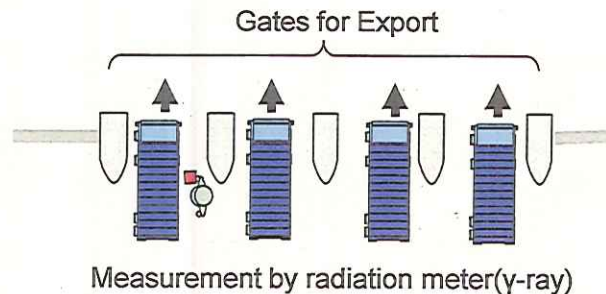
3. Indicative Criteria

According to the standard value developed by international bodies (IAEA, IMO), the criteria for recommending decontamination is defined on the guideline. If the measured dose rate is in excess of the criteria, decontamination will be taken.

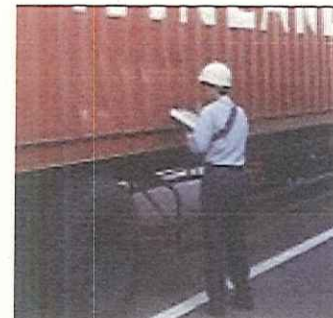


The dose rate of radiation on the surface of containers and ships is measured by mobile-type radiation meters.

Measurement at container terminal gate (image)



Radiation Measurement of Containers



Radiation Measurement of Vessel Bodies

