



COUNCIL OF EUROPE



CONSEIL DE L'EUROPE

INTERCULTURAL CITIES

BUILDING BRIDGES, BREAKING WALLS

International Forum on Acceptance of Foreign Nationals
and Their Integration into Japan

[Domestic and international partnership among municipalities towards
realizing integration and inclusion of foreign nationals in the society]

Rita Marascalchi

Intercultural Cities Programme
Intercultural Inclusion Unit
Anti-Discrimination Department
Council of Europe

Council of Europe



- Europe's leading human rights organisation – its Statute aims to foster greater unity between the member states based on three pillars: human rights, democracy and the rule of law.
- 46 member states working to ensure human rights protection for 700 million Europeans
- Work is based on the European Convention on Human Rights, and multiple other treaties on specific areas (prevention of torture, artificial intelligence, minority protection...)
- Intergovernmental work on standard setting in diverse areas – including non-discrimination, human rights, democracy.
- Monitoring of treaties by independent committees
- Co-operation promoting the implementation of Council of Europe standards and recommendations



Structure of the presentation:

I.THE INTERCULTURAL APPROACH

2.THE INTERCULTURAL CITIES PROGRAMME



I. THE INTERCULTURAL APPROACH

THE INTERCULTURAL APPROACH – WHY INTERCULTURAL?

	Economic rights	Civil and social rights	Cultural rights	Community building and cohesion
Guest worker	✓			
Assimilation	✓	✓		
Multiculturalism	✓	✓	✓	
Interculturalism	✓	✓	✓	✓

How can cities deal with diversity?

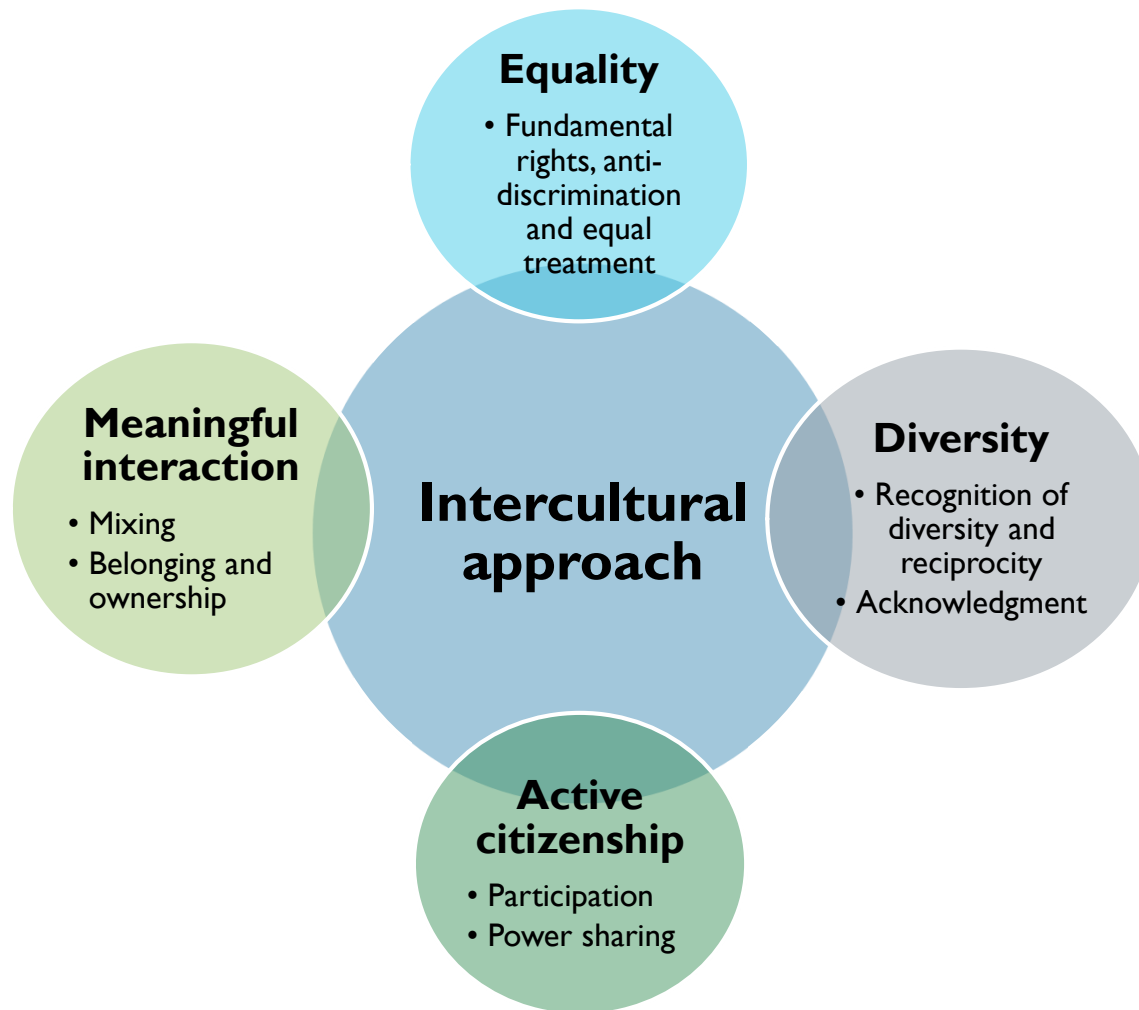
1. IGNORE IT
Segregation /
marginalisation

2. DENY IT
Assimilation / equality
without diversity

3. OVEREMPHASIZE
Multiculturalism / diversity
without inclusion

**4. REALIZE THE DIVERSITY
ADVANTAGE**
Intercultural approach

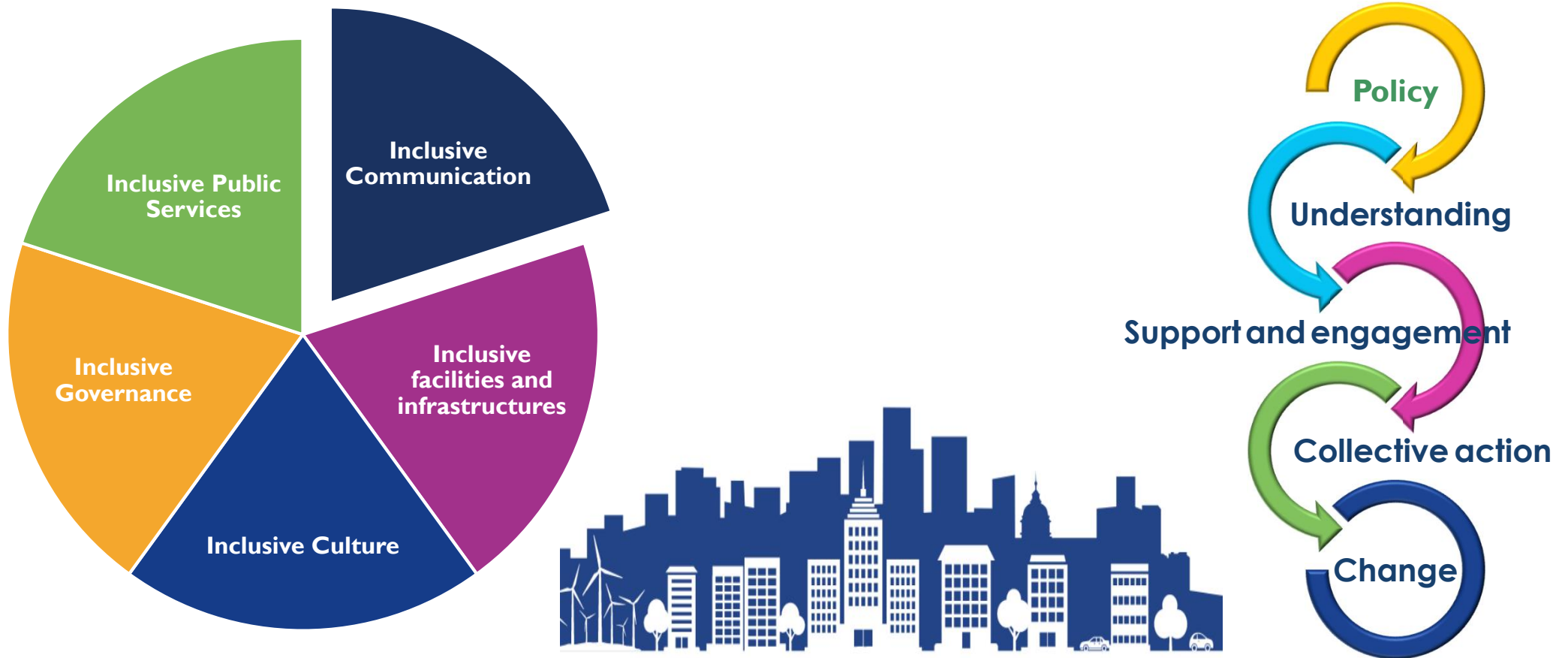
THE INTERCULTURAL APPROACH – THE 4 PILLARS



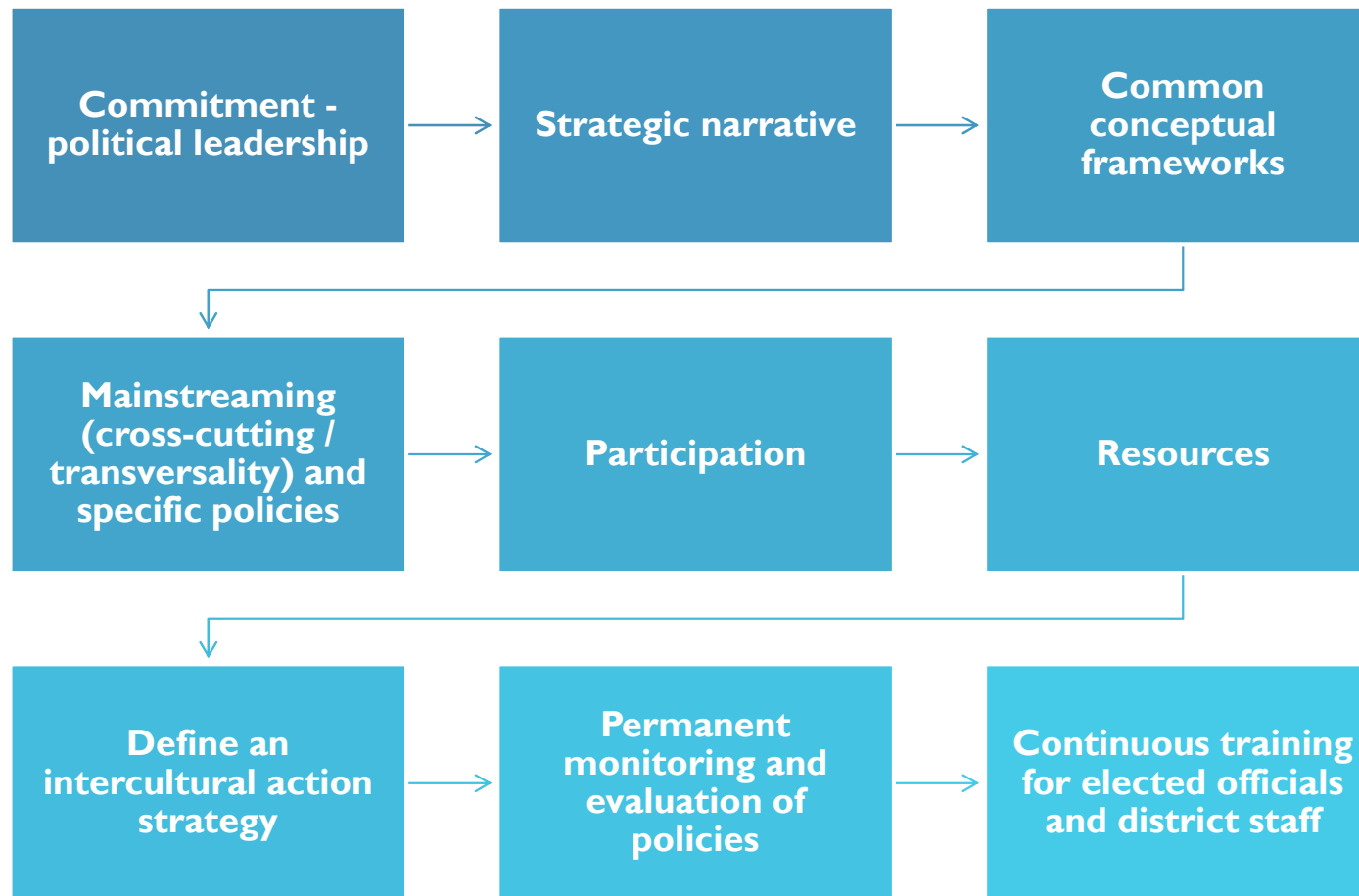
Most cities have a diverse population including people of different nationalities, origins, languages, religions/beliefs, sexual orientations and age groups.

Intercultural integration is a **policy approach** that encourages citizens to regard this **diversity as a resource** rather than a problem and accept that all cultures change as they encounter each other in the public arena. It is a **two-way process** involving individuals, communities of individuals, and the society as a whole.

WHAT DOES AN INTERCULTURAL CITY LOOK LIKE?



THE INTERCULTURAL JOURNEY



BENEFITS OF THE INTERCULTURAL MODEL



A study published in November 2017 by Migration Policy Group on the correlation between cities' adoption of an **intercultural integration** approach and its citizens' perception of **quality of life**.

In cities with stronger intercultural policies, the majority of people :

- had a positive attitude towards migrants and saw their presence as positive
- thought their city was safe and conducive to finding work
- and thought that public services were trustworthy and effective.

THE INTERCULTURAL APPROACH – MULTILEVEL GOVERNANCE

- Born out of the practice of **cities**; recommended to the **national** level and strengthened through on **multi-level** governance
- *Recommendation CM/Rec(2015)1 on **intercultural integration***
- ***Model Framework*** for an Intercultural Integration Strategy for the National Level (Council of Europe Committee of Ministers)
- *Committee of Ministers Recommendation of the Committee of Ministers to member States on **multilevel policies and governance for intercultural integration** (2022);*
- Implemented through projects (with the EU support) in Finland and Cyprus;
- Bringing the local towards the national.



2. THE INTERCULTURAL CITIES PROGRAMME

WHERE ARE WE?



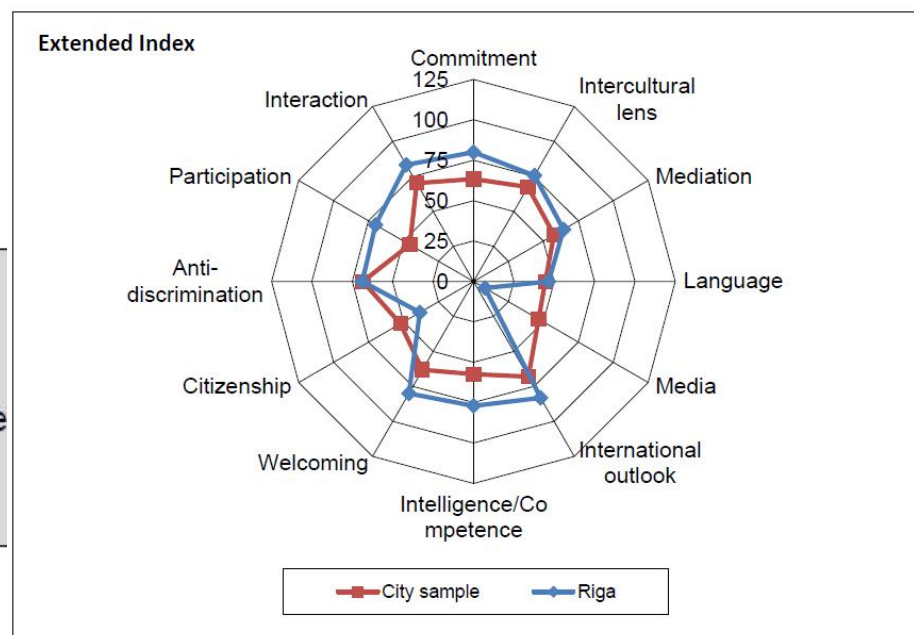
KEY BENEFITS OF ICC MEMBERSHIP

- **Networking** – working with other cities towards a common goal of ensuring the intercultural inclusion of migrants
- **Index** process – finding gaps and looking for good practice. This is a basis for ongoing work on inclusion
- **Peer learning and international expertise** – sharing good practices and working with renowned international experts to keep improving
- **Communication** – presence on the ICC website, ICC branding and listing of practices via the Council of Europe; access to other parts of CoE
- **Inter-continental aspects** – exchange with cities in North America, Asia, Europe and Australia provides unique insights into shared challenges and diverse approaches to tackling them

THE ICC INDEX

The intercultural cities index assesses cities' performance in relation to the intercultural integration model.

1. Commitment	
2. Intercultural lens	Education
3. Mediation and conflict resolution	Neighbourhoods
4. Language	Public services
5. Media and communication	Business and the labour market
6. International outlook	Cultural and social life
7. Intercultural intelligence and competence	Public space
8. Welcoming newcomers	
9. Leadership and citizenship	
10. Anti-discrimination	
11. Participation	
12. Interaction	



The **results of the Index** help cities make **evidence-based judgments about the impact** and outcomes of their policies and resource investment.

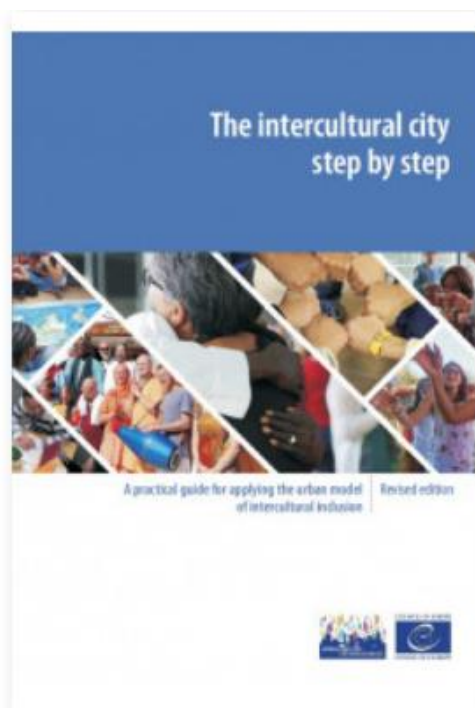
All Index reports: <https://www.coe.int/en/web/interculturalcities/index-results-per-city>

A COMPREHENSIVE SET OF TOOLS FOR POLICY INNOVATION



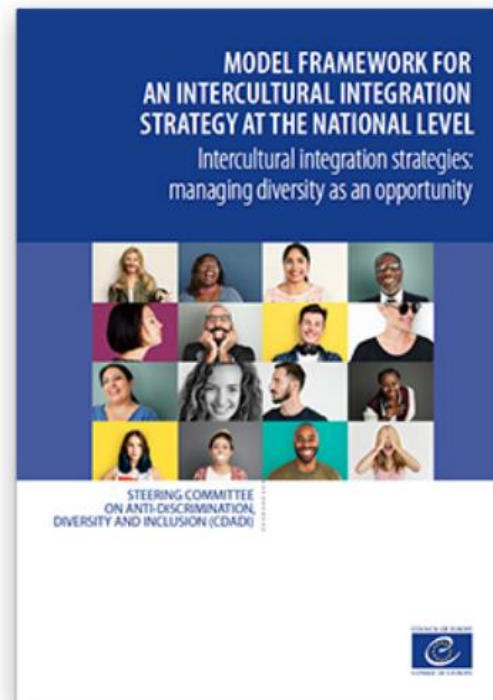
1. **Diagnostic and profiling:** ICC Index
2. **Policy guidance:** Policy briefs, manuals, support for strategy design, methodologies
3. **(Peer) Learning and mentoring:** Good practice, study visits, thematic events, webinars, training
4. **Innovation:** Piloting for and with cities
5. **Strategic development:** reaching out to the national level

KEY TOOLS FOR STRATEGY DESIGN



The Step-by-Step guide: a tool for local authorities to apply the urban model of intercultural integration and inclusion.

It builds upon the examples of cities managing diversity as a resource to facilitate the building of trust and shared identities across diverse groups.



The Model Framework is a guide for national policy practitioners to design integration policies that

- are truly intercultural,
- take into account local needs and context,
- are designed, implemented and evaluated through a multilevel governance approach.

THEMATIC TOOLS

The Intercultural Cities Index incorporates intercultural competence as an indicator of intercultural cities' performance.

The Manual for the design of a training course on intercultural competence supports public authorities to design their own tailor-made training courses with a view to spreading the skills and competence necessary to implement the Council of Europe intercultural integration model in a coherent and multilevel manner.



JAPANESE TRANSLATIONS OF TOOLS



開僚代理 勧告 CM/Rec(2022)10 12022年4月6日

インターカルチュラルな統合のための多元的な政策とガバナンス
に関する加盟国閣僚委員会の勧告 (CM/Rec(2022)10)

(第1431回閣僚代理会合で2022年4月6日に閣僚委員会が採択)

閣僚委員会は、欧州評議会規程第15.b条の文言に基づき、

欧州評議会の目的が、加盟国間の協調拡大にあり、社会の多様性の増大に直面して、特に平等、社会的統
合および多様性の管理の分野における共通の行動を通じて、この目標を追求できることを考慮し、

<https://www.clair.or.jp/j/multiculture/jiam/shujutoshi.html>
<https://www.clair.or.jp/tabunka/portal/efforts/index.php>

CHALLENGES FACING THE NETWORK – HIGH LEVEL

- Anti-migrant rhetoric gaining electoral ground across the globe, at local and national levels;
- Increasing polarisation, disinformation and hate speech across society, online and off-line
- International conflicts – besides loss of life also impact migration (e.g. Poland following war in Ukraine)
- Democratic backsliding in Europe and beyond

CHALLENGES FOR THE NETWORK – THE PROGRAMME

- Growing demand for membership and need to respond consistently to the different needs and wishes of members
- Ensuring continuous involvement of members in the network – the value of the Programme lies in each city taking active part in activities and sharing experiences/good practices
- Ensuring effective communication to all members of the network, in spite of language barriers and time differences

WAYS FORWARD

- Focusing on local and regional level – where a difference can be made and where practical solutions are needed beyond the dominant narrative at national level;
- Bringing in multilevel governance to ensure different levels can work together efficiently on inclusion;
- Pursuing work on anti-rumours and disinformation – making sure our cities have the necessary tools to respond;
- Reaching out to all cities in the network to understand their needs and increase international awareness of the intercultural inclusion approach;
- Providing tailored support to member cities who request it, enabling them to respond rapidly to emerging situations.



INTERCULTURAL CITIES
BUILDING BRIDGES, BREAKING WALLS

**THANK YOU FOR YOUR
ATTENTION!**

<https://www.coe.int/interculturalcities/>

COUNCIL OF EUROPE



CONSEIL DE L'EUROPE

COUNCIL OF EUROPE CONSEIL DE L'EUROPE

46 MEMBER STATES
46 ÉTATS MEMBRES



*Toute référence au Kosovo dans le présent document, qu'il s'agisse de son territoire, de ses institutions ou de sa population, doit être entendue dans le plein respect de la Résolution 1244 du Conseil de sécurité de l'Organisation des Nations Unies, sans préjudice du statut du Kosovo.
Carte et drapeaux : 3 caractères illustratifs
Designed by Latitude Mapping Ltd - Avril 2024

BACK

