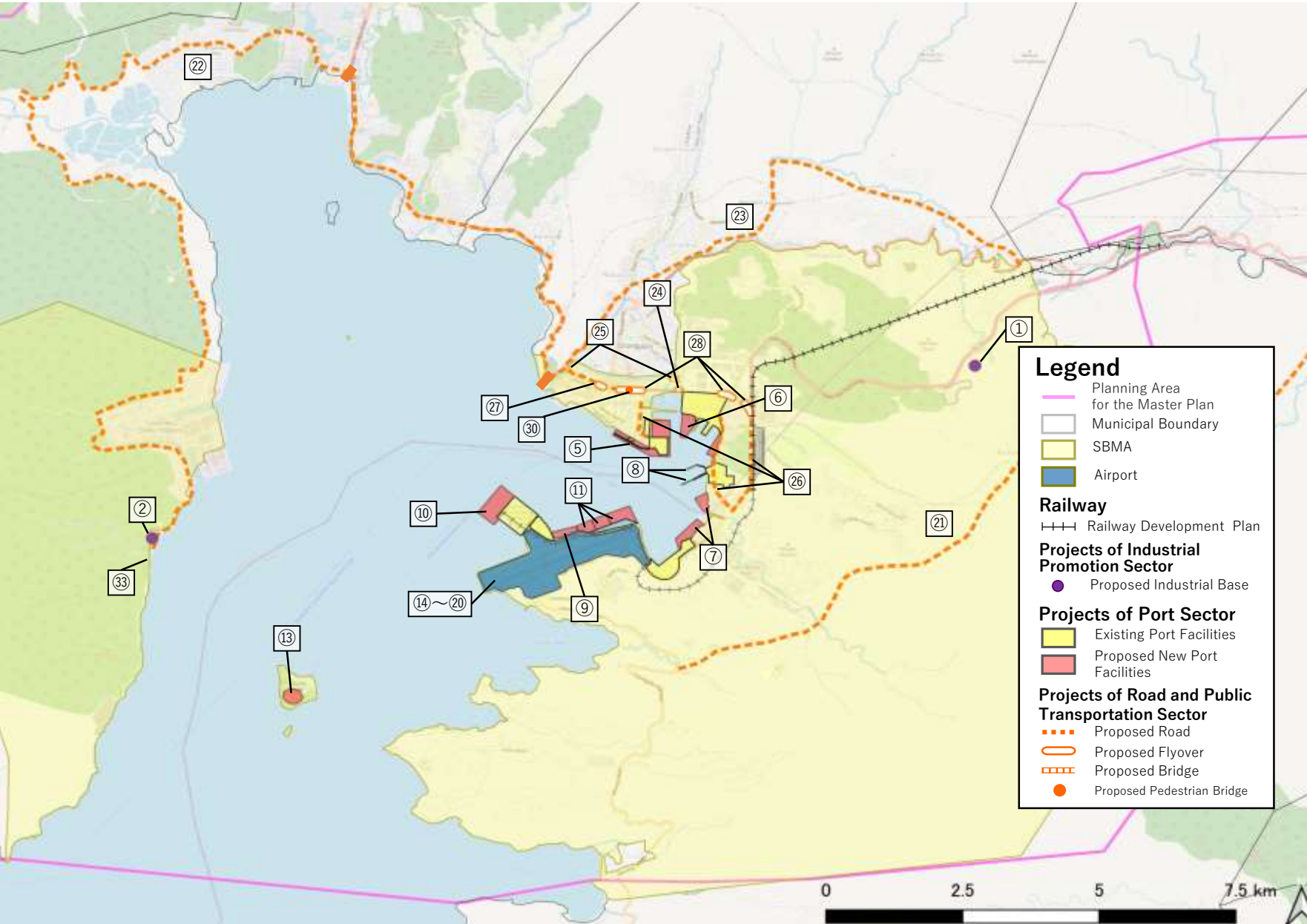


Outline of Subic Bay Regional Development Master Plan

List of Proposed Projects in the Master Plan



Industrial Promotion Sector	①	Subic Eco iPark Development	
	②	LNG Terminal and Natural Gas CCGT Power Plan Project	
	③	Strengthening Locator Backup System	
	④	Market Research for Cargo Attraction	
Port Sector	⑤	SRF Compound Redevelopment	
	⑥	SBMA Marine Terminal Redevelopment	
	⑦	Boton Wharf Redevelopment	
	⑧	POL Pier Expansion	
	⑨	Leyte Wharf Redevelopment	
	⑩	NCT Expansion	
	⑪	Multi-purpose Public Terminal Development and Reserved for Future Development and Empty Container Yard	
	⑫	LNG Import and Bunkering Facility Development	
	⑬	Navigation Safety Facility Development	
Airport Sector	⑭	Improvement of Runway End Safety Area (RESA)	
	⑮	Rehabilitation of Airport Facility and Equipment	
	⑯	Feasibility Study on Air Cargo Business	
	⑰	Feasibility Study on MRO Business	
	⑱	Feasibility Study on Business Jet	
	⑲	Feasibility Study on PPP Scheme	
	⑳	Airport Development in line with future demand	
	㉑	New connecting link to the SCTEx	
	Road and Public Transportation Sector	㉒	Development of the Subic Bay West Coast Support Road
		㉓	Development of Bypass Roads in the Olongapo Metropolitan Area
㉔		Widening of Existing Kalalake Bridge (about 60m) from Four Lanes to Six Lanes (about 60m long)	
㉕		New Four-lane Bridges on the West Side and the East Side of CBD	
㉖		Development of Port Access Road	
㉗		Widening (from four to six lanes) and New Construction (four lanes) on Rizal Avenue	
㉘		For New Four-lane Flyovers (approx. 300m/section) on Rizal Avenue	
㉙		Technical Assistance on the Public Transportation Management	
㉚		Pedestrian Bridge / Underpass at Major Intersections on Rizal Avenue	
㉛		Network Development for Vulnerable Road Users on Arterial Roads in CBD	
Disaster Risk Management and Maritime Safety Sector		㉜	Coastal Disaster Management Base
		㉝	PCG Support Facility Subic Bay
Environmental Protection Sector		㉞	Updating of Subic Bay Protected Area Management Plan

*Some projects are still conceptual stage or soft components. Those Project sites have not be identified and locations are not plotted on the map.