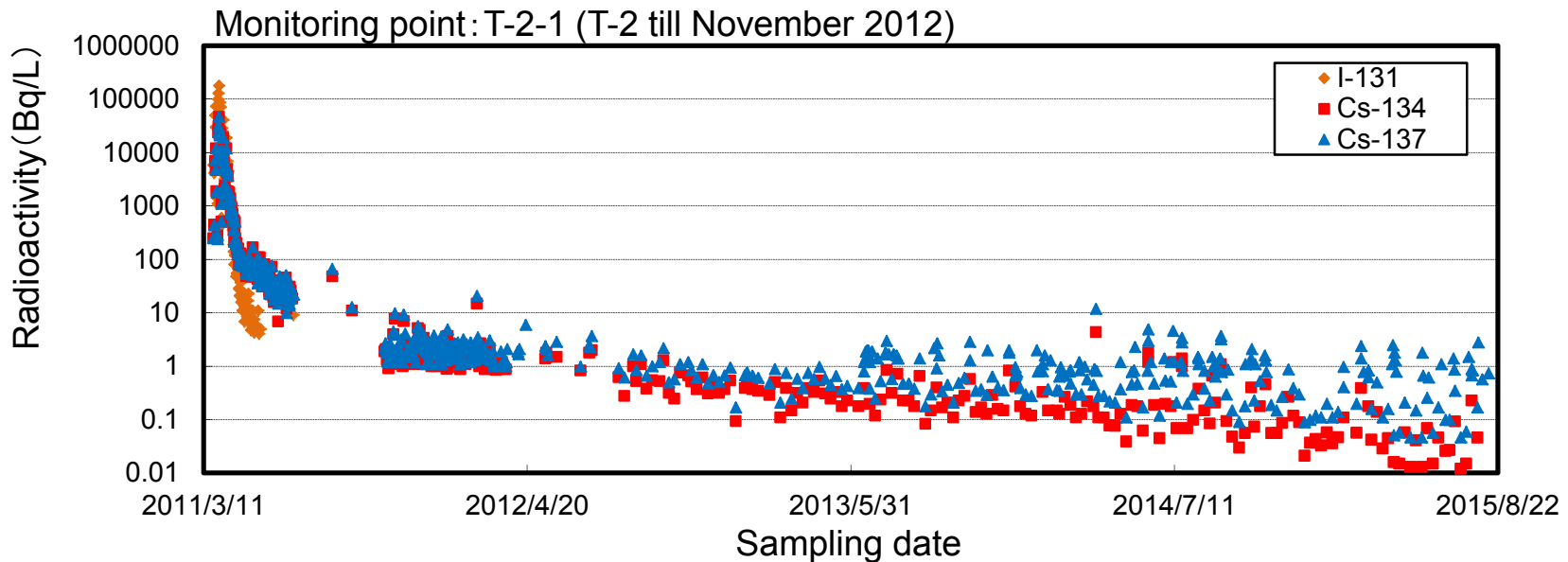
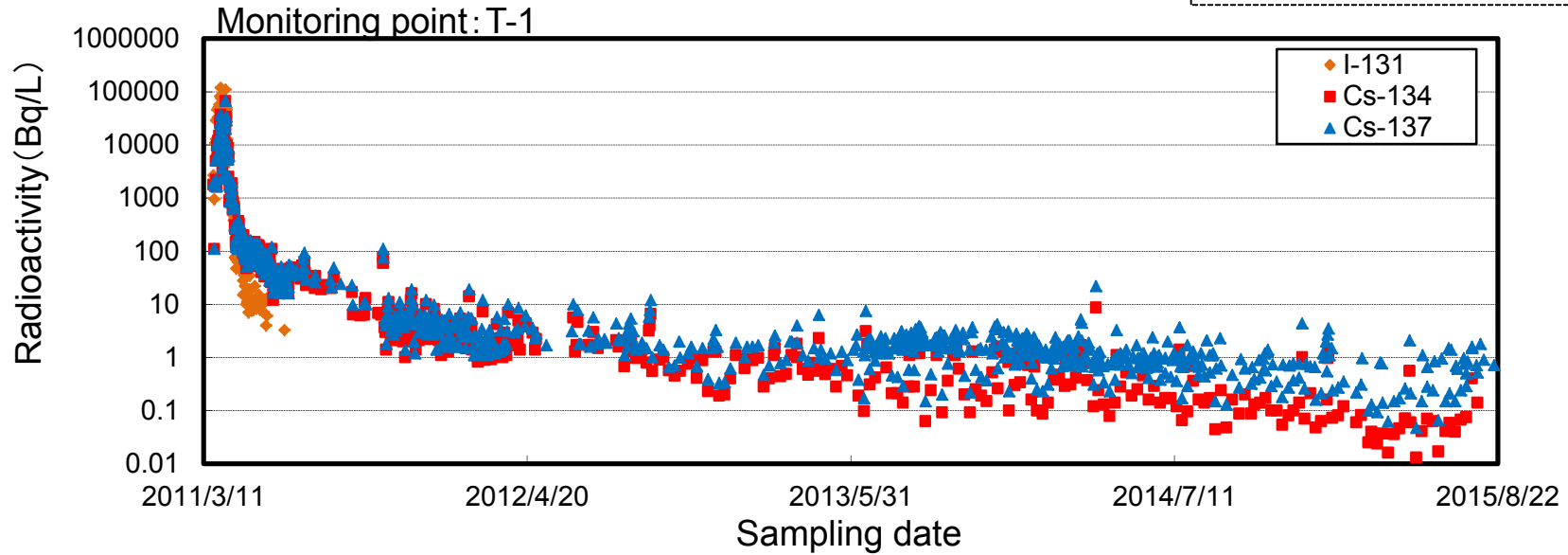
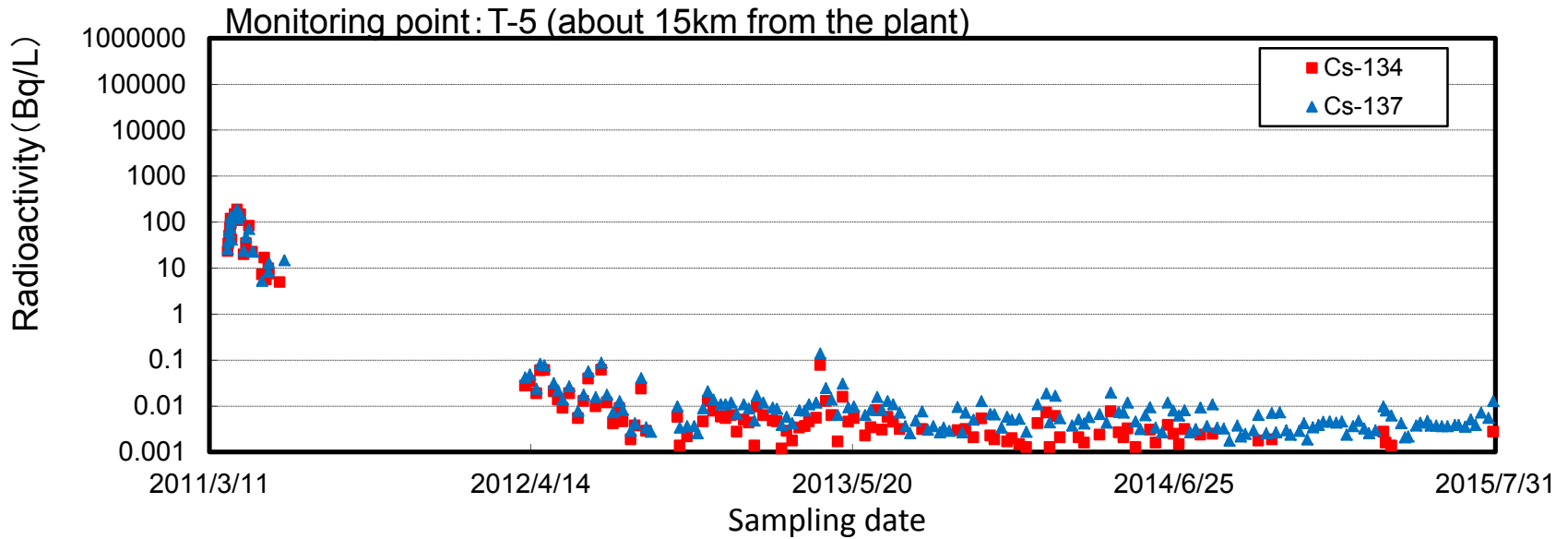
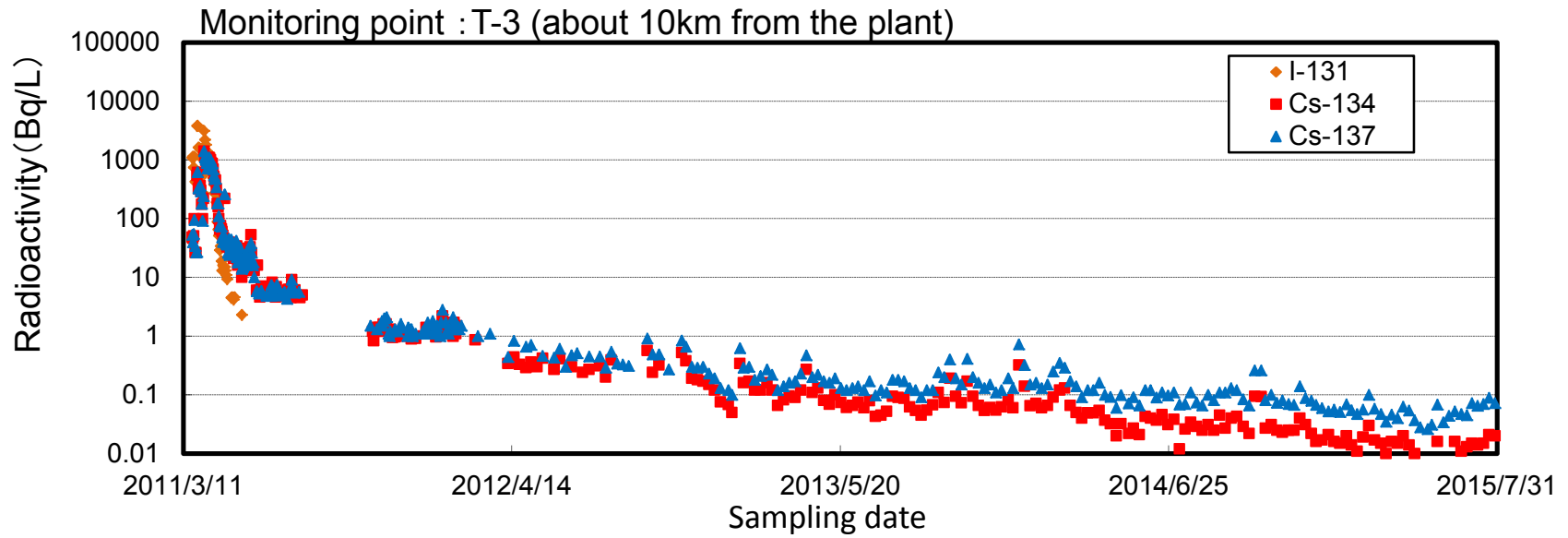
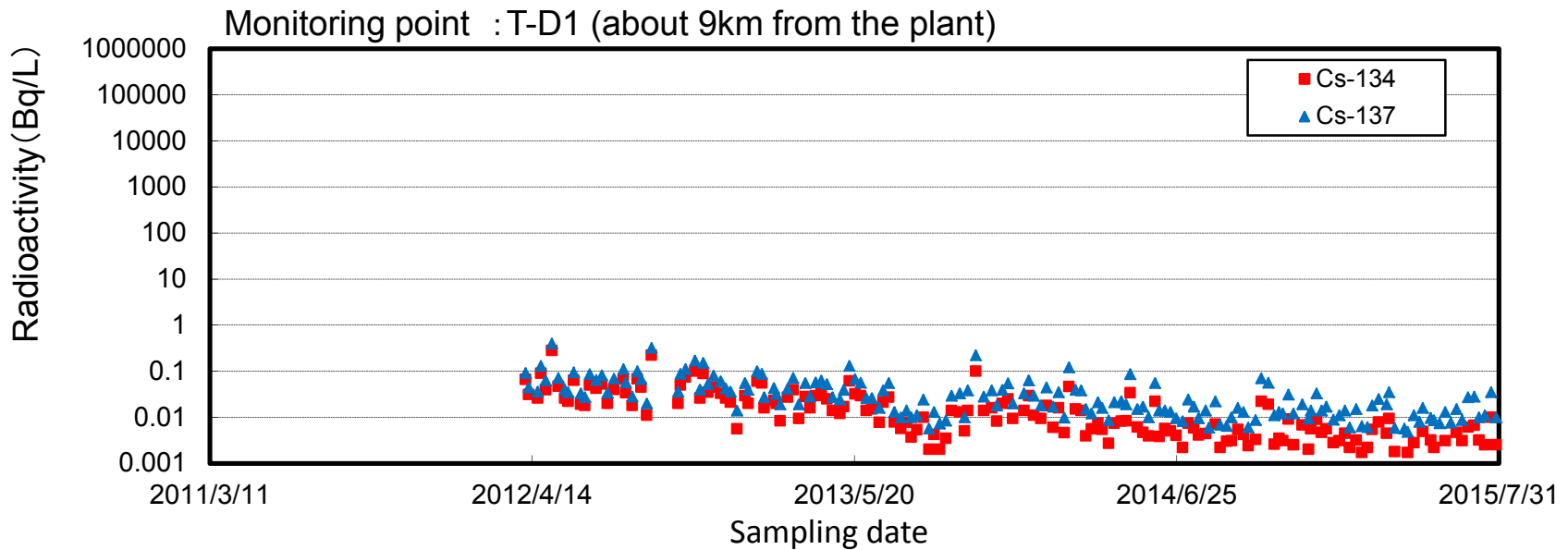
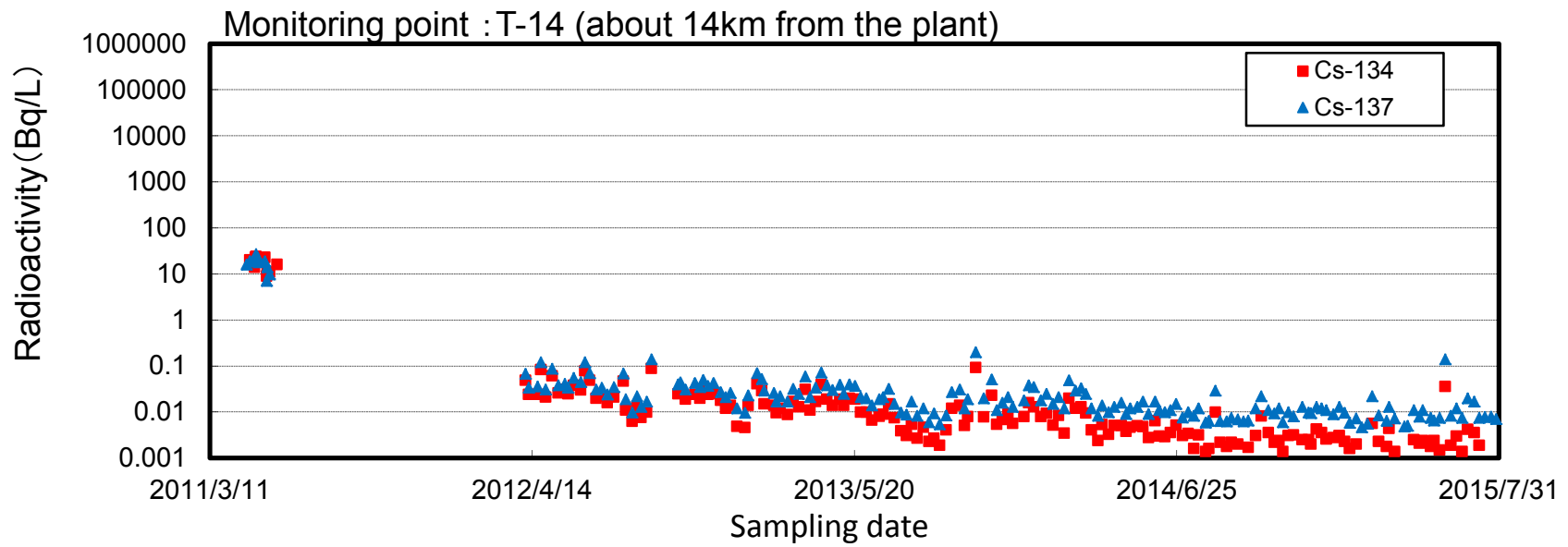


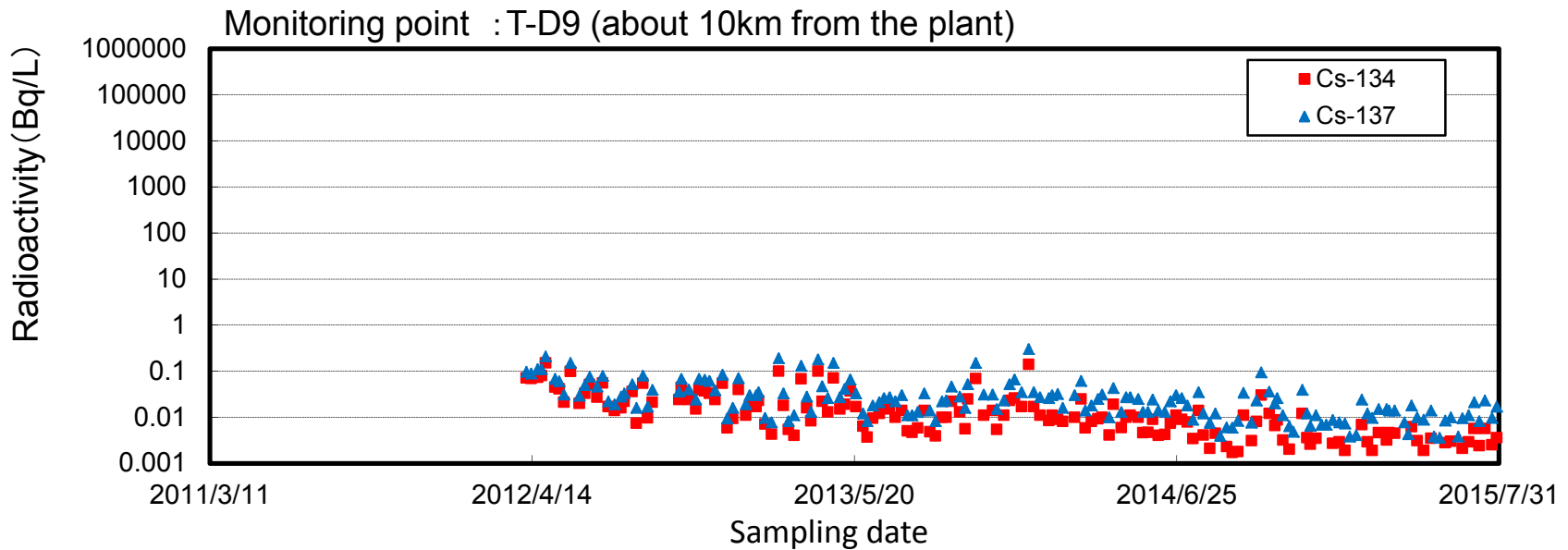
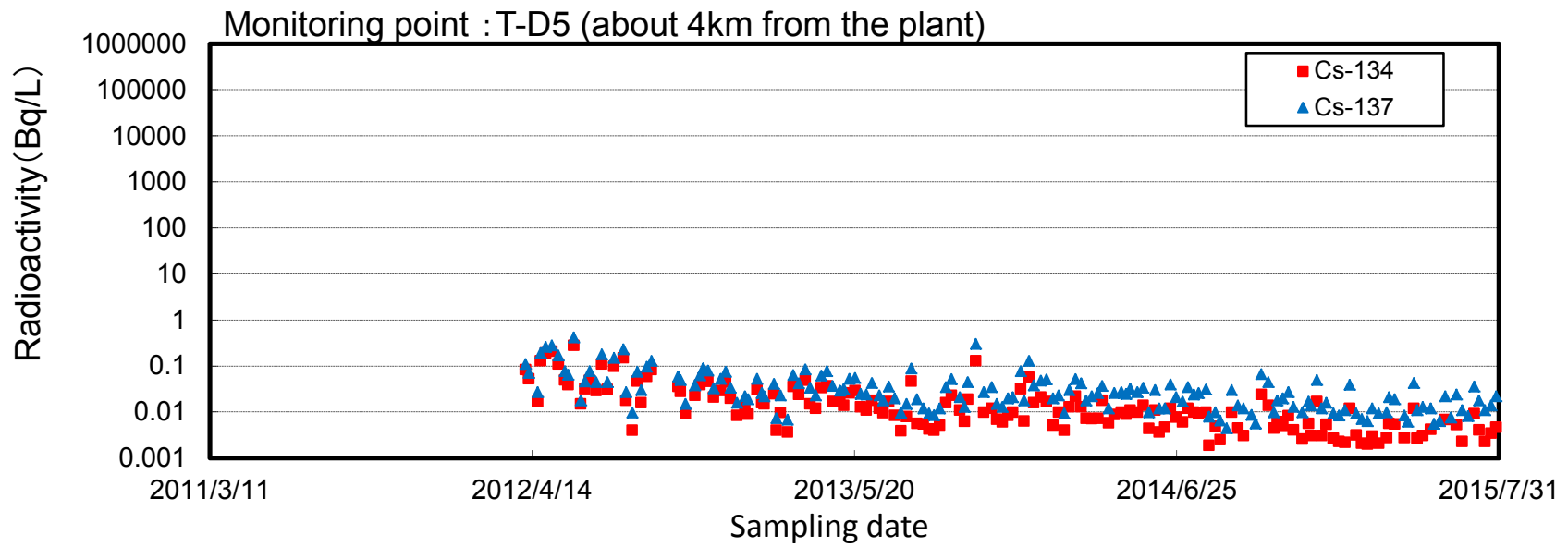
Change of the radioactivity concentration of the seawater close to Fukushima Daiichi NPS / coastal sea area

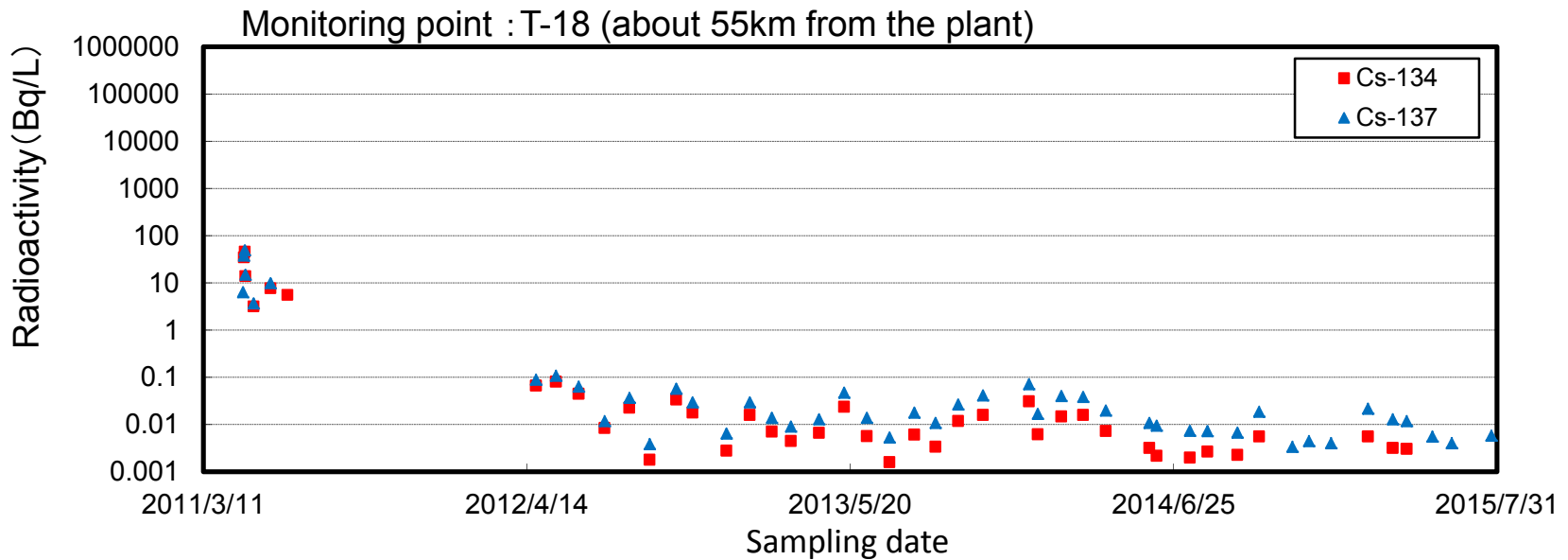
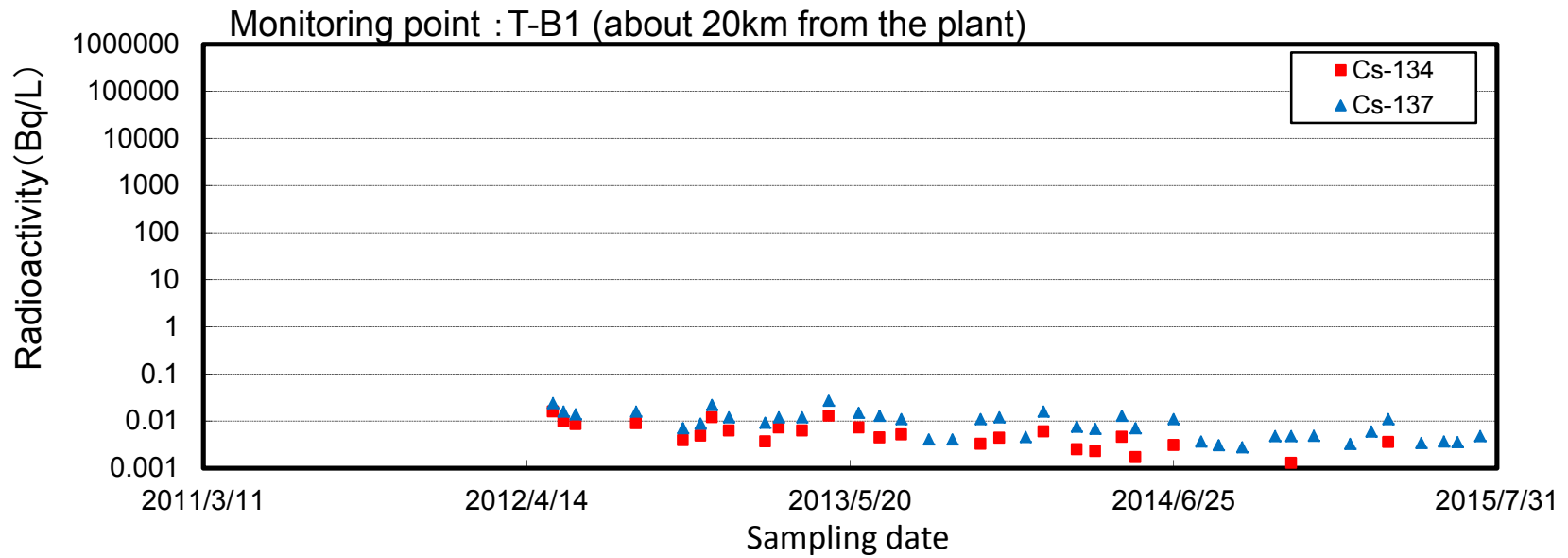
Sampling depth: 2m below the sea level



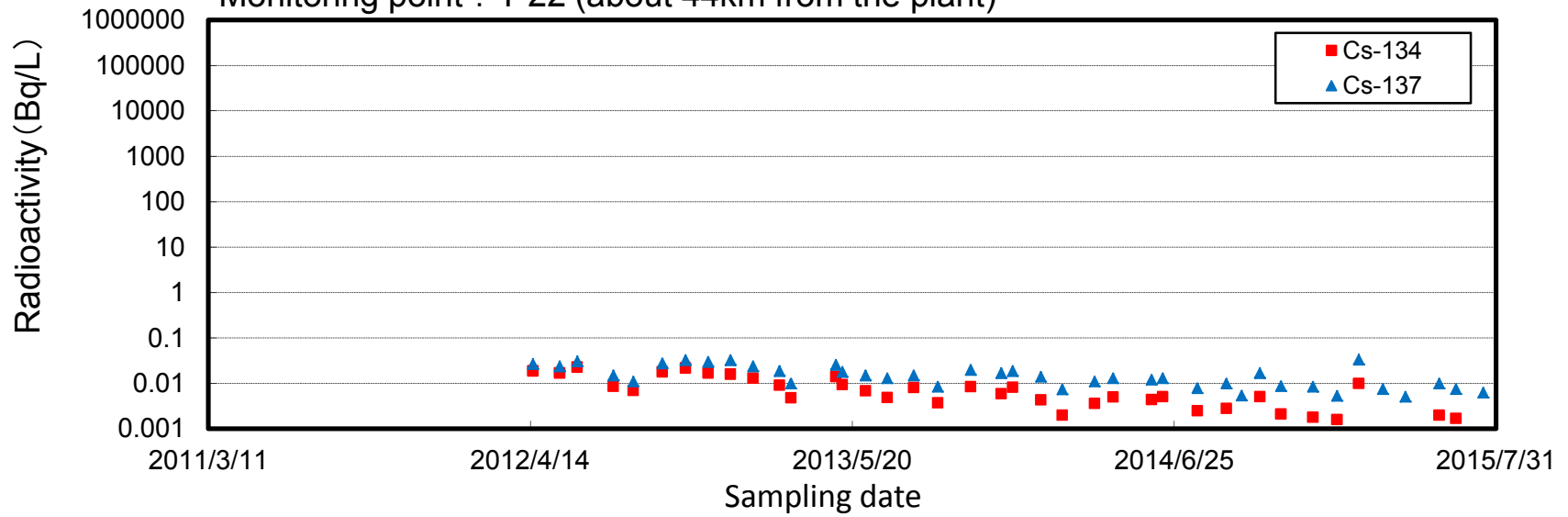




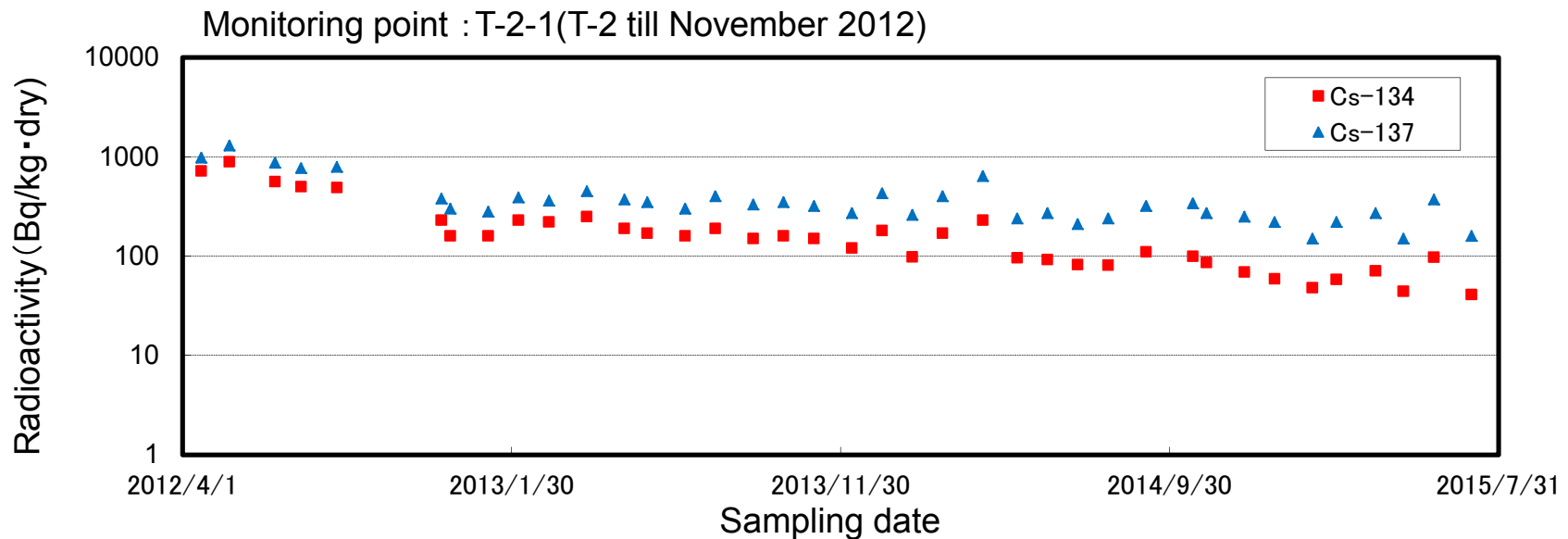
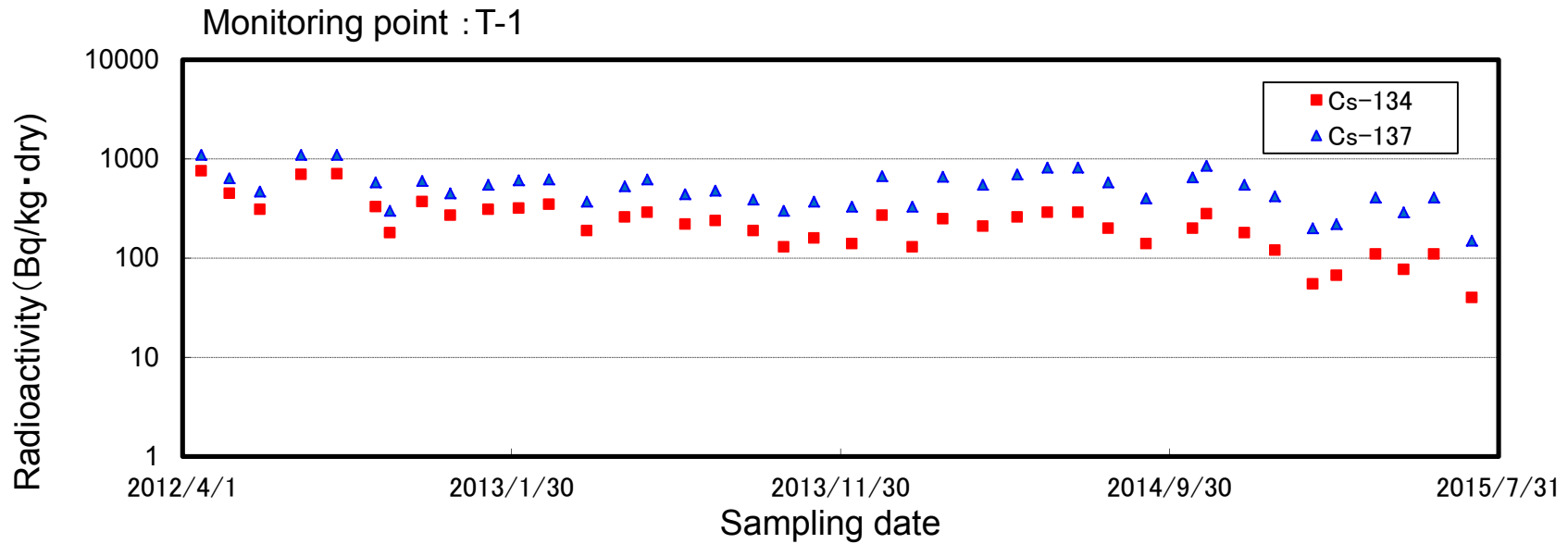




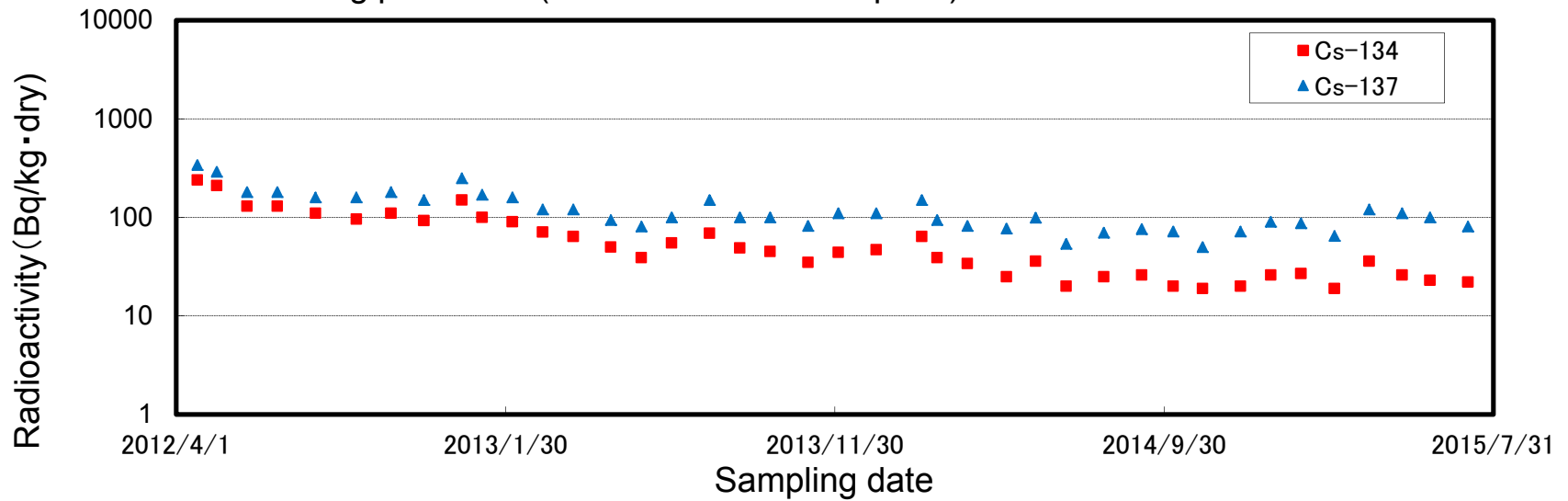
Monitoring point : T-22 (about 44km from the plant)



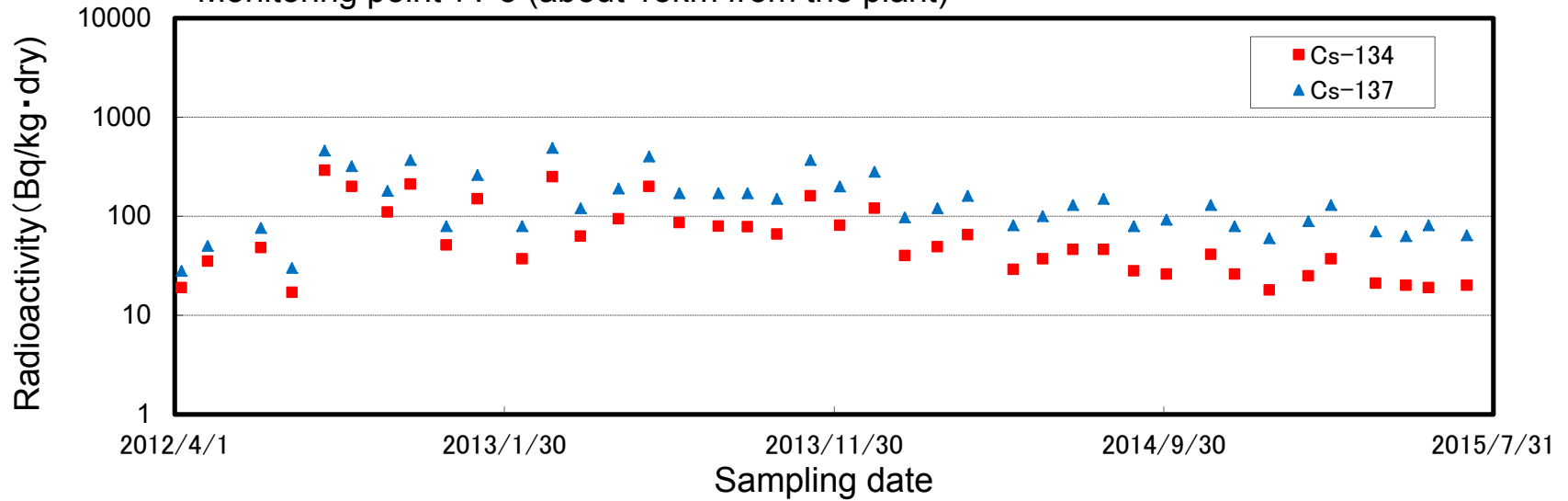
Change of the radioactivity concentration of the sediment close to Fukushima Daiichi NPS / coastal sea area



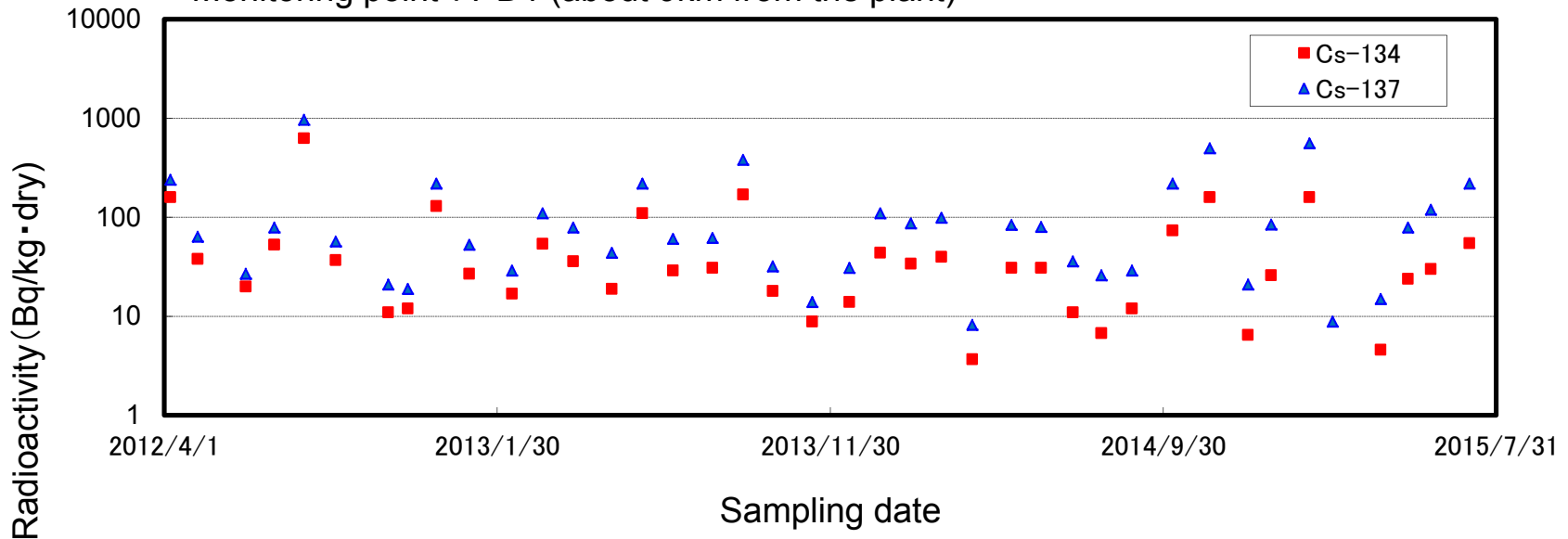
Monitoring point : T-3 (about 10km from the plant)



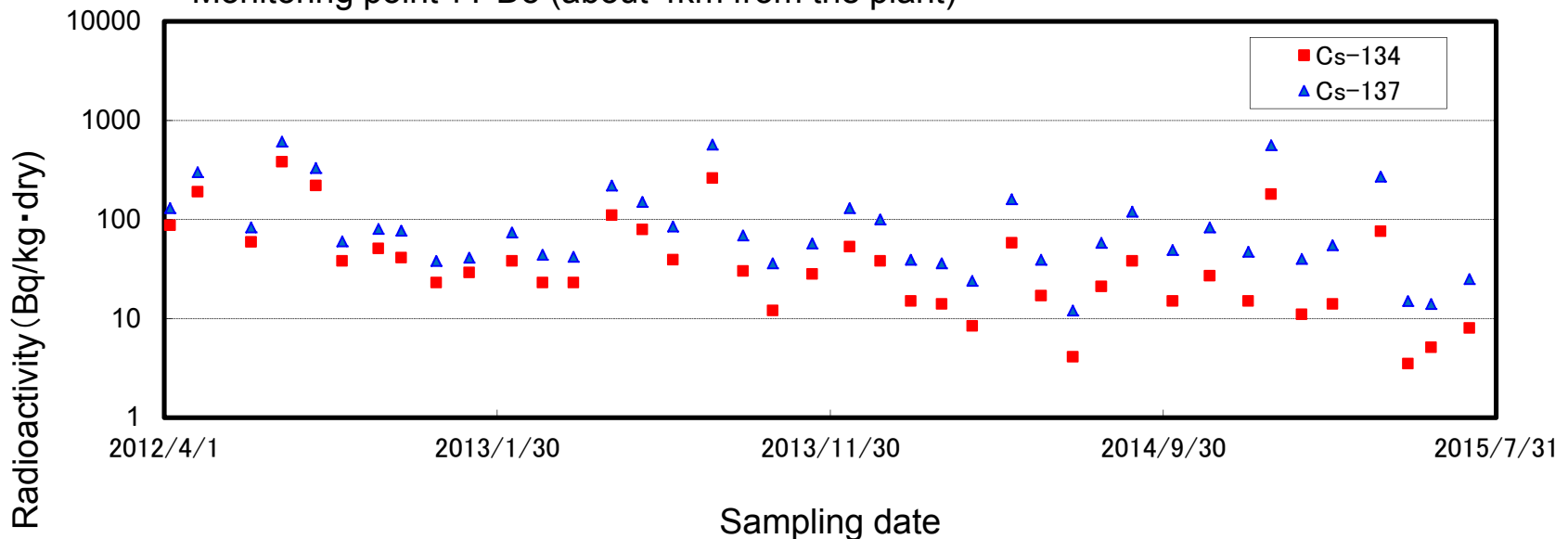
Monitoring point : T-5 (about 15km from the plant)



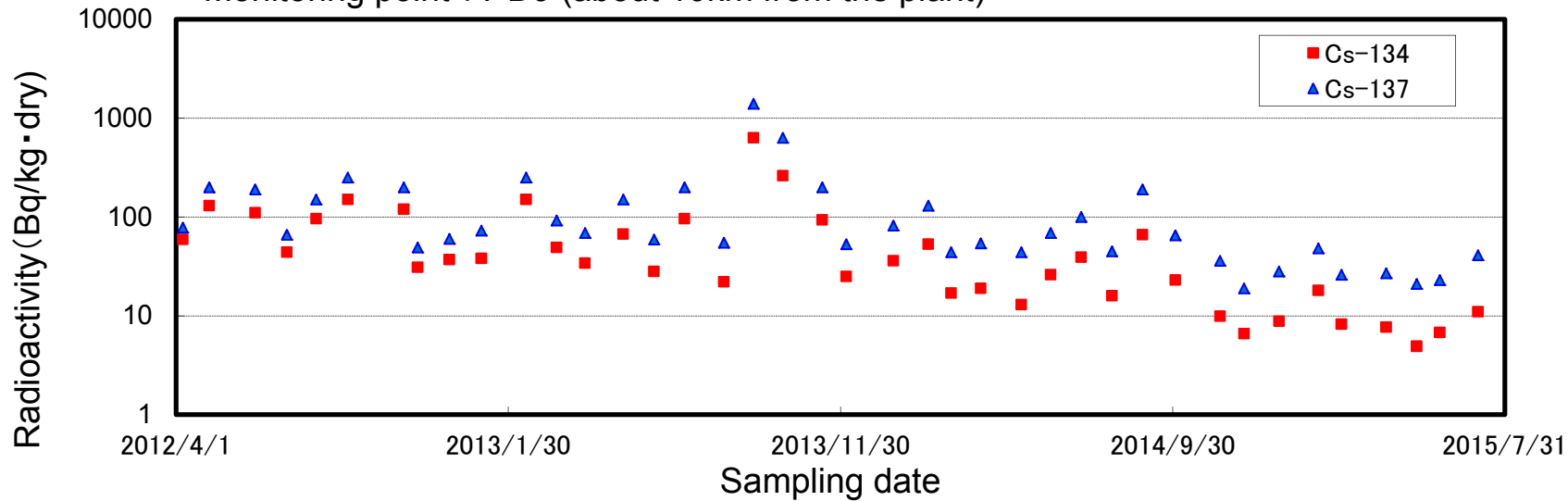
Monitoring point : T-D1 (about 9km from the plant)



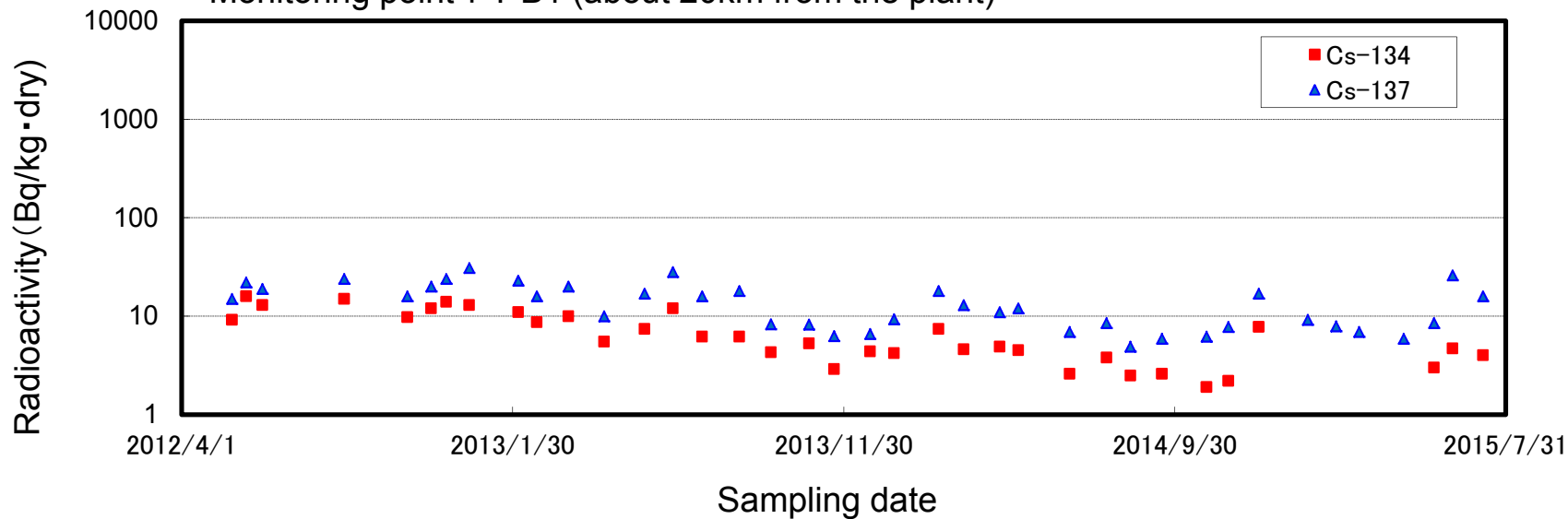
Monitoring point : T-D5 (about 4km from the plant)



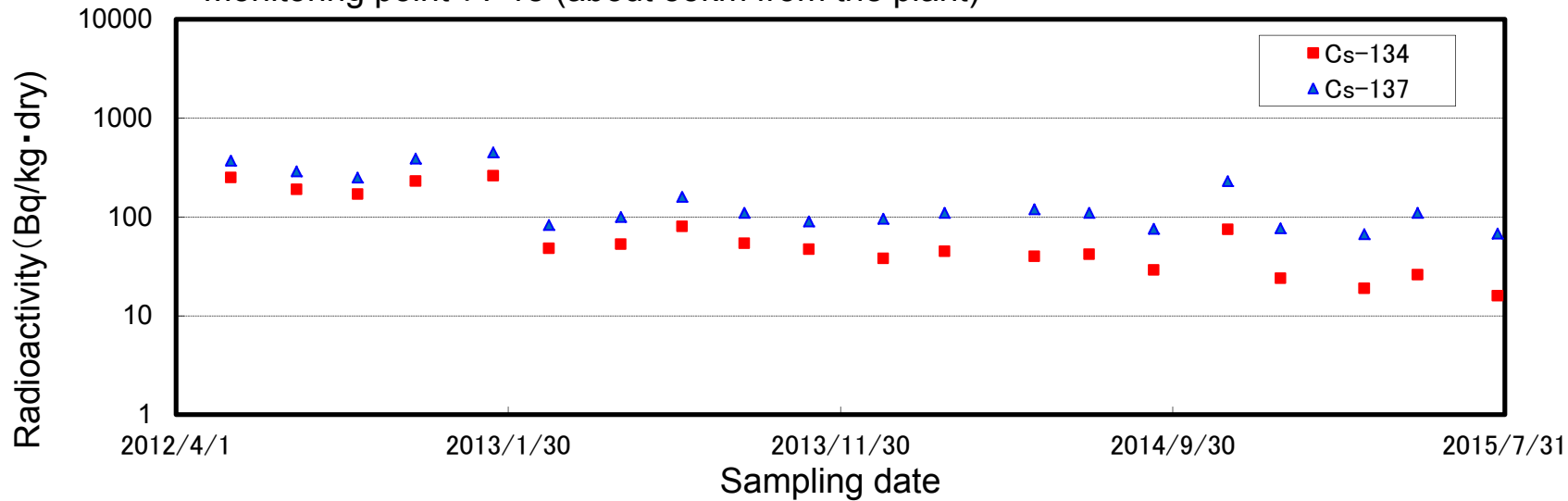
Monitoring point : T-D9 (about 10km from the plant)



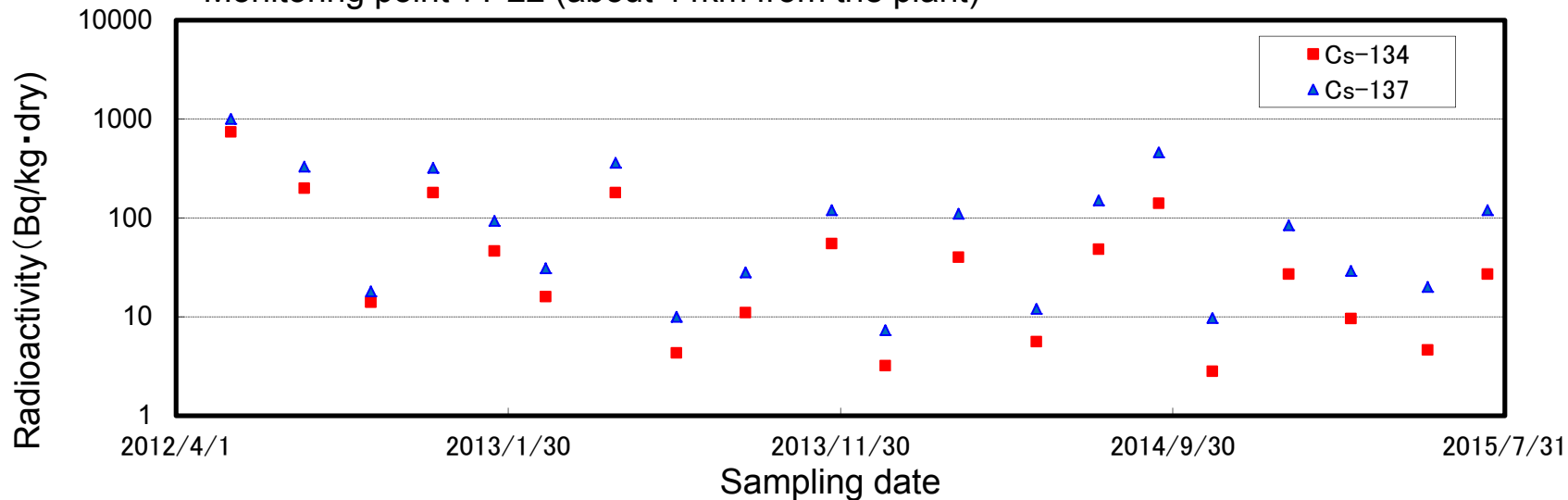
Monitoring point : T-B1 (about 20km from the plant)

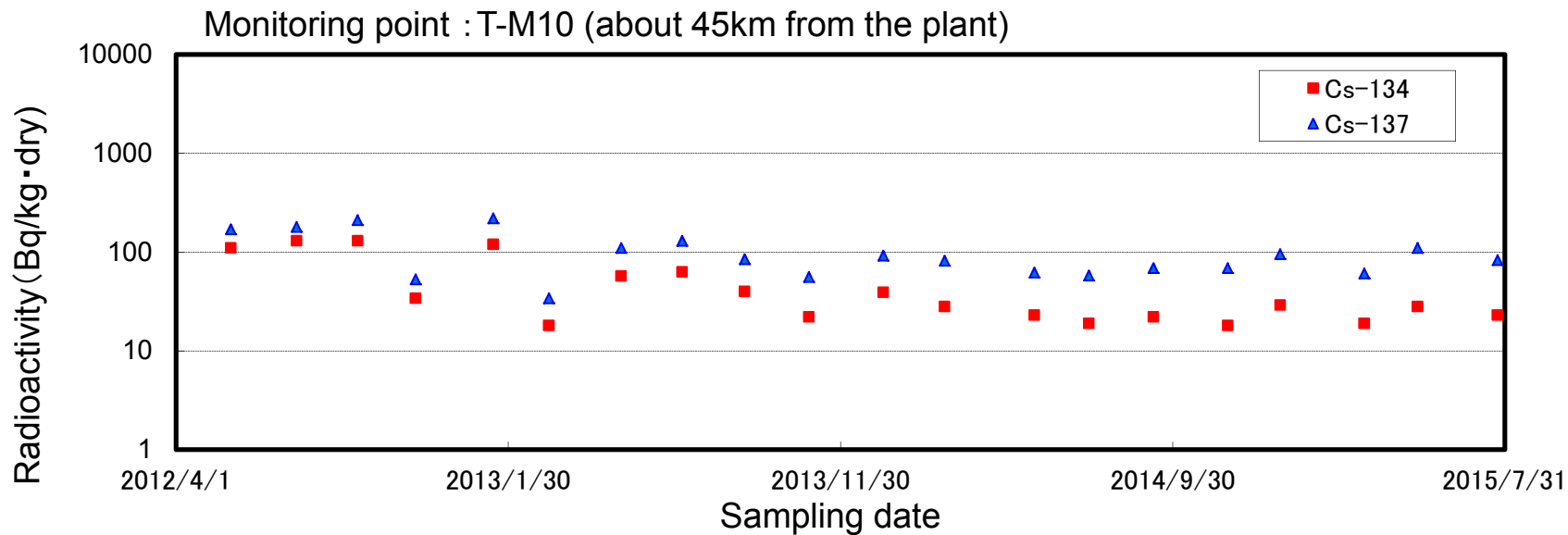


Monitoring point : T-18 (about 55km from the plant)



Monitoring point : T-22 (about 44km from the plant)





The detail data is available on the NRA webpage

<http://radioactivity.nsr.go.jp/en/list/205/list-1.html>