

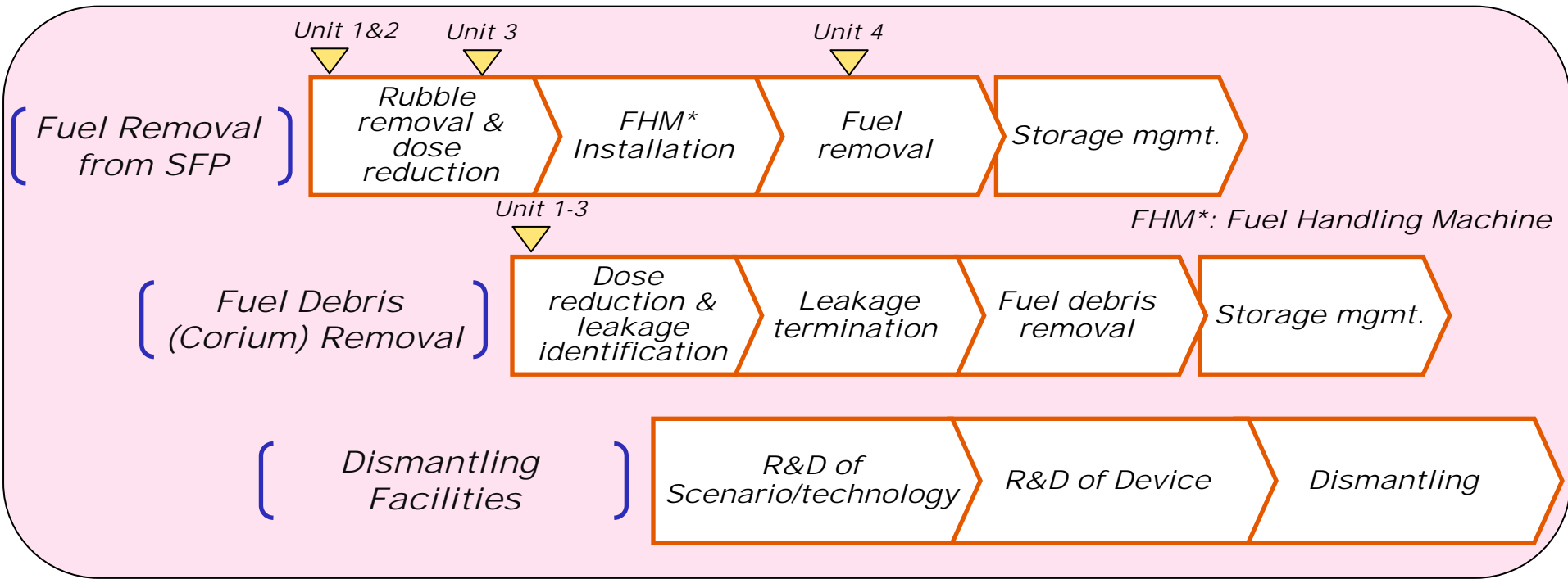
Current Status and Recent Topics of Fukushima Daiichi NPS

May 30th, 2014



TOKYO ELECTRIC POWER COMPANY

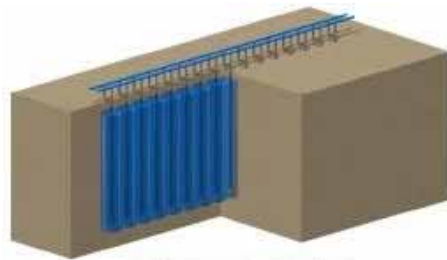
Current Status



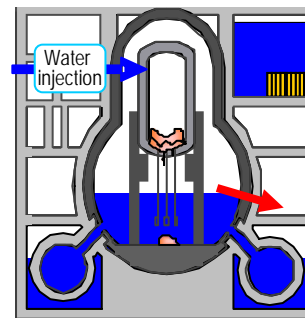
Recent Topics



Fuel Removal



Frozen Wall



Leakage Identification



ALPS



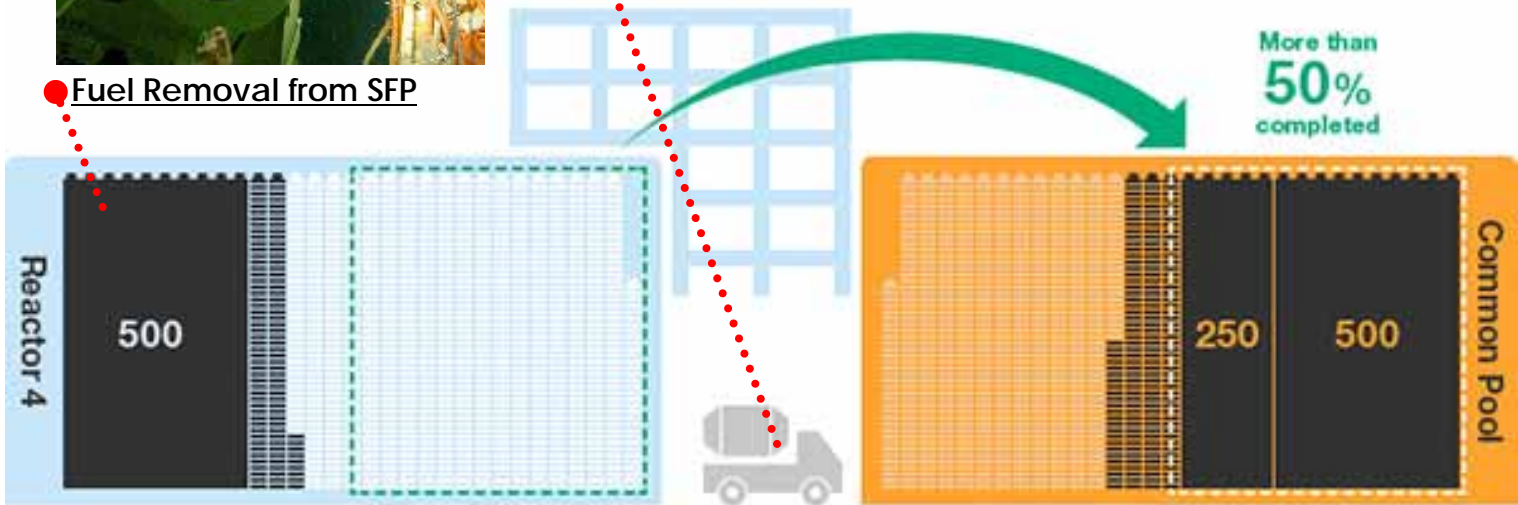
Fuel Removal from Unit 4



Fuel Removal from SFP



Fuel Container Placed on a Trailer



Number of Transferred Assemblies **924/1533** (As of May 26th, 2014)



Small Scale Frozen Wall Successfully Produced

Coolant circulation pipe



Frozen Soil

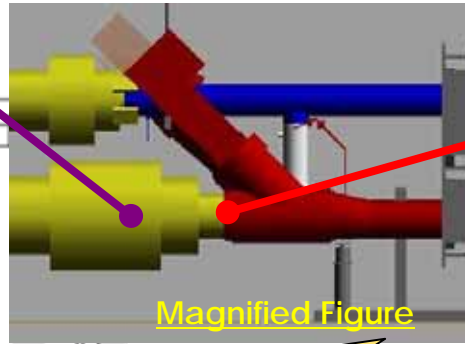
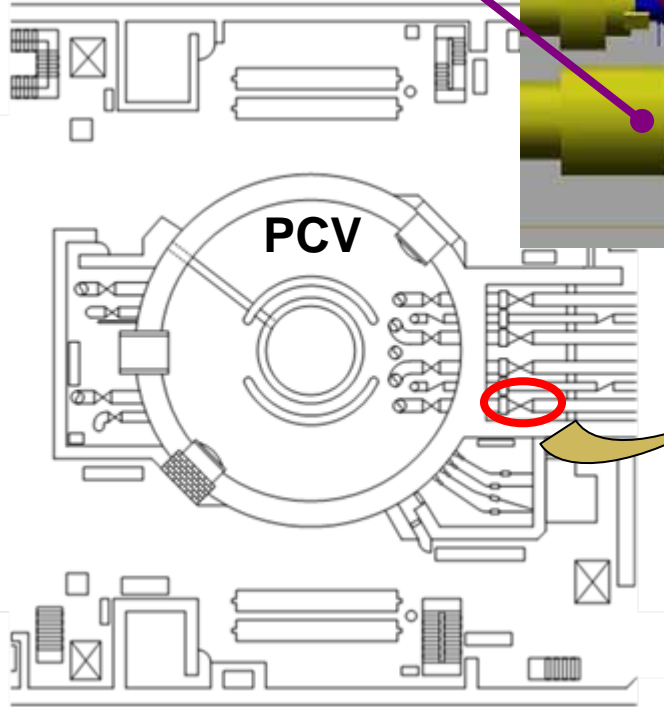


Freezer Pipe



Unit 3 Water Leakage Location Identified

Main Steam line (D)



Point of Leakage

Magnified Figure

Top View of Unit 3 Reactor Bldg.



Leakage Found

Photo of Main Steam Line (D)



Status of Multi Nuclide Removal Facility (ALPS)

- All 3 trains experienced preprocessing filter defects due to radiation embrittlement
- Train B already equipped with radiation resistant filters and restarted on May 23rd
- Other two trains still shutdown and waiting for filter exchange



- Augmenting current ALPS (250m³/day x 3 trains)
- Installation of mobile Sr-removal system (300m³/day)

