

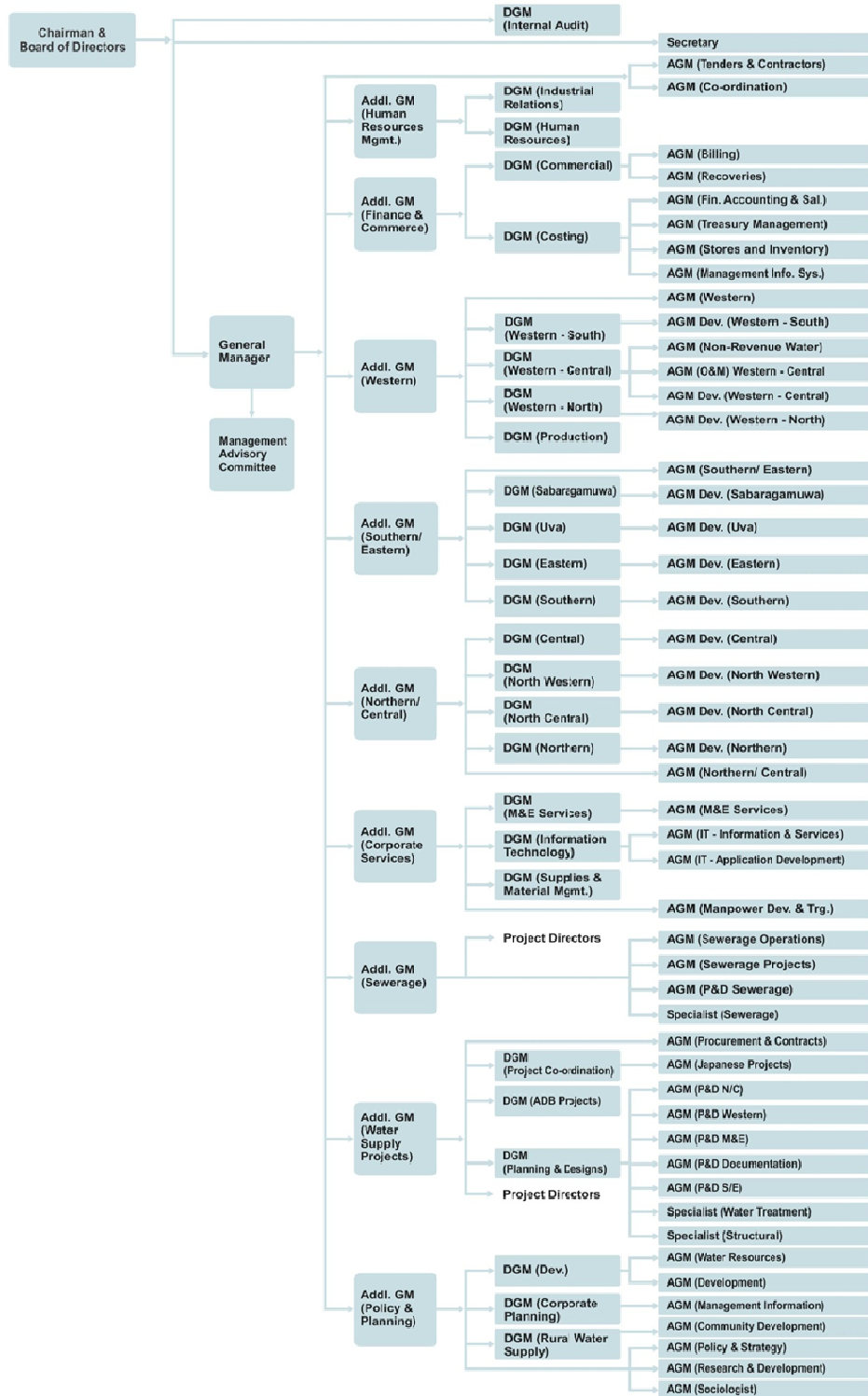
添付 1 図表および資料

目次

添付 1 図 1 NWSDB 組織図.....	2
添付 1 表 1 州および県別の人口、人口増加率、人口密度.....	3
添付 1 表 2 「マヒンダ構想」 数値目標.....	4
添付 1 表 3 NWSDB のアクションプランに計画されている事業.....	5
添付 1 表 4 NWSDB 損益計算書.....	7
添付 1 表 5 現在進行中の海外からの資金援助による事業.....	8
添付 1 資料 1 既存の浄水地・貯水池の詳細.....	12
添付 1 資料 2 浄水場・貯水池の今後の建設計画.....	27
添付 1 資料 3 NWSDB チェアマンの民間提案型普及・実証事業への関心表明.....	43

添付1 図1 NWSDB 組織図

**Organization Structure of the
National Water Supply & Drainage Board**



出所：NWSDB ウェブサイト

添付 1 表 1 州および県別の人口、人口増加率、人口密度

州および県名	人口	%	平均年間増加率 (2001年-2012年)	人口密度 (人口/km ²)
スリランカ	20,277,597	100.0%	0.71%	323
西部州	5,837,294	28.8%	-	-
Colombo	2,323,826	11.5%	0.35%	3438
Gampaha	2,298,588	11.3%	1.02%	1714
Kalutara	1,214,880	6.0%	1.23%	771
中央州	2,556,774	12.6%	-	-
Kandy	1,368,216	6.7%	0.65%	714
Matale	482,348	2.4%	0.88%	224
NuwaraEliya	706,210	3.5%	0.05%	424
南部州	2,465,626	12.2%	-	-
Galle	1,059,046	5.2%	0.63%	655
Matara	810,703	4.0%	0.59%	638
Hambantota	595,877	2.9%	1.17%	239
北部州	1,060,023	5.2%	-	-
Jaffna	583,071	2.9%	-	628
Mannar	99,063	0.5%	-	53
Vavuniya	172,789	0.9%	-	93
Mullaitive	92,228	0.5%	-	38
Kilinochchi	112,872	0.6%	-	94
東部州	1,547,377	7.6%	-	-
Batticaloa	525,186	2.6%	-	201
Ampara	645,825	3.2%	0.81%	153
Trincomalee	376,366	1.9%	-	149
北東部州	2,372,185	11.7%	-	-
Kurunegala	1,611,407	7.9%	0.93%	348
Puttalam	760,778	3.8%	0.66%	264
北中央州	1,259,421	6.2%	-	-
Anuradhapura	855,562	4.2%	1.33%	128
Polonnaruwa	403,859	2.0%	1.11%	131
ウバ州	1,259,419	6.2%	-	-
Badulla	811,225	4.0%	0.39%	287
Monaragala	448,194	2.2%	1.15%	81
サバラガムワ州	1,919,478	9.5%	-	-
Ratnapura	1,082,299	5.3%	0.59%	334
Kegalle	837,179	4.1%	0.61%	497

出典: “Population of Sri Lanka by district”, 2012, Department Census and Statistics, Sri Lanka

添付 1 表 2 「マヒンダ構想」 数値目標

項目	単位	2005 年	2010 年 (推定)	2016 年 (目標)
人口	百万	19.7	20.7	21.9
GDP	十億米ドル	24.4	49.1	98
一人当り収入	米ドル	1,241	2,375	4,470
インフレ率 GDP デフレーター	%	5.7	7	4
輸出	十億米ドル	6.3	8	18
国際貿易取引高	十億米ドル	15.2	21.3	44.1
国際給与所得 (Net)	十億米ドル	0.3	0.6	2.6
観光収入	十億米ドル	0.3	0.5	2.5
海外からの送金	十億米ドル	2	3.8	7
電気アクセス	%	75	88	100
通信アクセス	%	23.6	85	100
女性の労働力参加	%	32.6	34.3	40
失業	%	7.2	5.3	3.2
乳幼児死亡	1000 人中	11.2	10.9	4
妊産婦死亡	1000 人中	0.45	0.39	0.2
貧困	%	15.2	7.6	4.2
就学	%	95	98	100
識字率 (15 才～24 才)	%	95	97	98
コンピュータ・リテラシー	%	9.7	20.3	75

出所: "Mahinda Chintana: vision for the future", 2010, Government of Sri Lanka

添付 1 表 3 NWSDB のアクションプランに計画されている事業

プロジェクト	期間	予想費用 (百万 Rs.)
承認済み		
ラブガマ、カラトゥウェワ浄水場の修復、拡張 (ハンガリー)	2012 - 2015	7,302
コロナ、バランゴダ給水 (ベルギー)	2012 - 2015	4,458
大ラトナプラ圏総合給水プロジェクト Phase I (スペイン)	2013 - 2016	9,928
バドゥッラ、ハリエラ、エッラ総合給水 (アメリカ)	2012 - 2016	8,706
大ダンブッラ圏給水 (インド、インド輸出入銀行)	2012 - 2013	9,593
コロombo市給水拡張 (ADB)	-	-
バンダラウェラ、ディヤタラワ、ハプタレ総合給水 (BOO / BOOT)	-	-
クンダサーレ・ハラガマ水供給 (BOO / BOOT)	-	-
関心表明を募集中	-	-
アヌラーダプラ北部総合給水	-	-
アヌラーダプラ南部フェーズ II 総合給水	-	-
マータラ給水 Stage IV	-	-
プッタラム、アナドゥワ総合給水	-	-
マカンドゥラ、パンナラ、クリヤピティヤ総合給水	-	-
内閣常任審査委員会 (SCARC) により承認済み.	-	-
マヒヤンガナヤ給水拡張	-	-
キリッバンウェワ給水	-	-
バダルクンブラ、アルポタ総合給水 (条件付承認済み)	-	-
モナラガラ、バッターラ総合給水	-	-
パタドゥバラ総合給水	-	-
大マータレ圏給水	-	-
キラマ カトゥワナ総合給水	-	-
アラッワ-ボルガハウエラ総合給水	-	-
中国開発銀行の支援が入る予定	-	-
カタナ給水	-	-
ミリガマ、カンダラマ給水	-	-
マトゥガマ、アガラワッタ、ベルワラ、アルトゥガマ総合給水 (カルタラ給水拡張プロジェクト Stage III)	-	-
コロombo市送水拡大、拡張	-	-
大クルネガラ圏上下水整備	-	-
ダンバデニヤ総合給水	-	-

プロジェクト	期間	予想費用 (百万 Rs.)
ワドゥルペーヌ エッラ給水	-	-
ミッデニヤ アングナコラペレッサ総合給水	-	-
南部州農村上下水整備	-	-
ヌワラエリヤ圏農村上下水整備	-	-
パタドゥンバラ/バビンナ給水	-	-
タンブッテガマ給水	-	-
ラワンウェッラ給水	-	-
ヘマタガマ給水	-	-
ワディナガラ給水	-	-
バラッチャネイ給水	-	-
ドライゾーン（クルネガラ、ポロンナルワ、マータレ）の農村上 下水道開発	-	-
マンクラム給水	-	-

出所:Action plan 2010-2012”, 2012, NWSDB

添付 1 表 4 NWSDB 損益計算書

(単位 : Rs)

年度	2008	2009	2010	2011
水道料金売上	6,743,217,327	9,669,975,867	10,744,059,534	11,616,045,254
売上原価	(6,088,841,694)	(6,321,949,712)	(7,061,727,544)	(7,470,490,082)
水道事業純利益(損失)	654,375,633	3,348,026,155	3,682,331,990	4,145,555,172
営業雑収入	1,391,118,020	1,397,317,115	1,566,297,797	2,081,716,017
一般管理費	(1,895,309,365)	(2,062,268,144)	(2,564,857,342)	(2,447,412,103)
減価償却	(1,397,510,699)	(1,409,852,073)	(3,258,762,679)	(1,769,054,208)
その他管理費	(468,138,615)	(1,089,308,312)	(268,745,918)	(249,979,834)
営業純利益 (損失)	(1,715,465,025)	183,914,742	(843,736,151)	1,760,825,044
再評価欠損(revaluation deficit)			(3,684,342,399)	(474,261,491)
財務費用(支払利息)	(1,192,769,345)	(1,568,941,934)	(1,419,459,214)	(943,355,146)
営業外雑収入	59,918,167	48,782,302	97,644,018	131,257,102
税引き前当期純利益 (損失)	(2,848,316,204)	(1,336,244,891)	(5,849,893,746)	474,465,508
法人税等	(66,609,224)	(89,009,061)	(105,273,966)	(53,055,544)
当期純利益 (損失)	(2,914,925,428)	(1,425,253,952)	(5,955,167,712)	421,409,965

出所:Financial Statements 2011, Financial performance, NWSDB ウェブサイト

添付 1 表 5 現在進行中の海外からの資金援助による事業¹

No.	Project Name (Donor)	District	Type of Project	No. of Beneficiaries	Duration		Total Estimated Cost (Rs. million)	Actual Expenditure as at end 2010 (Rs. million)	Physical Progress
					From	To			
Central Province									
1	Towns South of Kandy WS (DANIDA)	Kandy	New	360,000	2006	2011	9,626.00	8,703.85	97
2	Nuwara Eliya District Group Town WS (DANIDA)	Nuwara Eliya	Augmentation	95,000	Nov. 2006	Feb. 2010	4,258.90	4,287.71	100
3	Greater Dambulla WS - Stage 1 (INDIA)	Nuwara Eliya	Augmentation		2012	Jul. 2014	9,593.00	5,808.50	23
Eastern Province									
4	Eastern Coastal Towns of Ampara District (ECTAD) WS Phase II (Australia)	Ampara	New	161,400	Oct. 2002	Dec. 2010	11,078.20	10,712.13	100
5	Integrated Water Supply Scheme for the Unserved Area of Ampara District Phase III (Australia)	Ampara	New	80,000	2007	2015	18,012.00	9,904.30	36
Northern Province									

¹ Abbreviations:

ADB - Asian Development Bank

DANIDA - DANish International Development Agency

KfW - Credit for Reconstruction

SLI - Service Level Improvements

WS - Water Supply

No.	Project Name (Donor)	District	Type of Project	No. of Beneficiaries	Duration		Total Estimated Cost	Actual Expenditure as at end 2010	Physical Progress
6	Jaffna Killinochchi Water Supply & Sanitation (ADB VI)	Jaffna	Augmentation	15,000	2011	2016	18,328.20	194.56	15
North Central Province									
7	Thambuttegama WS (China)	Kurunegala	New		2014	2017	1,805.00	-	
Southern Province									
8	Ruhunupura WS Development (Korea)				Jan. 2011	Mar. 2013	13,131.30	5,378.20	46
9	Kirama ,Katuwana,Middeniya & Angunakolapelessa Integrated WS (China)	Galle	Augmentation	160,000	Jan. 2012	Jan. 2013	2,662.00	-	
10	Rehabilitation & Augmentation of Kirindioya Water Supply (Austria)	Hambantota	Augmentation	30,000	Feb. 2007	Dec. 2009	2,104.83	1,914.25	100
Uva Province									
11	Badulla - Haliela and Ella Integated WS (US Exim Bank)				2013	2015	10,396.50	5.1	
12	Mahiyangana Water Supply (Austria)				2013	2016	1,785.00	-	
Western Province									
13	Kelani Right Bank WTP (DANIDA)	Colombo	New	1,500,000	Oct. 2008	Dec. 2013	12,000.00	9,477.31	98
14	Rehabilitation & Augmentation of Labugama - Kalatuwawa WTP	Colombo	Rehabilitation	375,000	2013	2016	8,100.00	1.29	-

No.	Project Name (Donor)	District	Type of Project	No. of Beneficiaries	Duration		Total Estimated Cost	Actual Expenditure as at end 2010	Physical Progress
	(Hangary)								
15	Augmentation of Negombo WS (DUTCH)	Gampaha	Augmentation	137,500	2008	2013	7,302.00	6,703.69	98
16	Energy Conservation Project at Ambatale WTP (GERMAN)				2012	2014	6,220.00	-	
17	Colombo Water Supply Service Improvement Project (ADB)				2012	2018	28,800.00	8.12	
18	Katana WS (China)				2014	2015	1,641.00	-	
19	Water Treatment Facilities Moratuwa / Panadura, Ambatale and in Negombo (Spanish) [formerly Galagoda WSS]	Colombo, Gampaha	New	10,000	Oct. 2007	Dec. 2009	2,690.00	2,672.34	100
Sabaragamuwa Province									
20	Greater Ratnapura Water Supply Project (Spain)				Jan. 2012	Dec. 2016	9,928.00	-	
21	Kolonna/ Balangoda Water Supply Project (Belgium)				2011	2015	4,658.00	1,244.50	5
North Western Province									
22	Greater Kurunegala (China)				Jan. 2013	Dec. 2015	11,943.00	-	

No.	Project Name (Donor)	District	Type of Project	No. of Beneficiaries	Duration		Total Estimated Cost	Actual Expenditure as at end 2010	Physical Progress
23	Wandura Pinu Ella WS (China)				Jan. 2012		9,756.00	-	
Inter Provincial Projects/ Programmes									
24	Secondary Towns Rural Community Based WS & Sanitation (ADB 4th project)	Polonnaruwa, Anuradhapura, Trincomalee, Hambantota, Batticaloa	New	968,000 (Water) & 171,500 (Sanitation)	Jan . 2004	2013	29,680.00	25,692.94	95
25	Dry zone urban Water & Sanitation Project(ADB V)			86,000	Jun. 2009	Jun. 2014	13,029.60	1,494.19	31
26	Hambantota/ Ambalantota/ Weligama/ Kataragama Implementation Project & Badulla, Bandarawela Integrated Feasibility Studies (UNIHA)	Hambantota, Matara	Augmentation	150,000 & SLI 200,000	Nov. 2004	Dec. 2013	2,126.00	1,767.88	98

出所: NWSDB ウェブサイト

添付 1 資料 1 既存の浄水地・貯水池の詳細

1. CENTRAL PROVINCE /DIVISION

1.1 Kandy District

Water treatment plants

No.	location	Capacity (m ³ /day)	No.	location	Capacity (m ³ /day)
1	Vilana	50	18	Katugastota	48,000
2	Owissa	250	19	Arattana	14,500
3	Mullepihilla	130	20	Balagolla	7,200
4	Gurudeniya	230	21	Nattarampotha	50
5	Udawatta	260	22	Haragama	800
6	Pallegama	40	23	Marassana	2,500
7	Galagedara	1,000	24	Medadumbara	3,500
8	Minigamuwa	40	25	Nawalapitiya	4,500
9	Para Deka	6,000	26	Polgolla	10,000
10	Dartry	500	27	Bolagala	220
11	Doluwa	250	28	Medadeniya	350
12	Pussellawa	750	29	Alagoda	250
13	Ulapane	8,000	30	Dombagammana	200
14	Angamma	350	31	Nillambe	11,000
15	Elpitiya	7,000	32	Meewathura	32,000
16	Hantana	480	33	University	6,500
17	Rajapihilla	900			

Water Storage Tanks – Ground Reservoirs

No.	location	Capacity (m ³)	No.	location	Capacity (m ³)
1	Kahawatta	600	50	Bodigala	450
2	Kurugoda	600	51	Kundasale	450
3	Bulukohotenna – 02 Nos.	300 each	52	Buluwemuduna	225
4	Vilana	300	53	Udarata Sadella – 02 Nos.	80 each
5	Delgasgoda	300	54	Maligatenna	30
6	Ampitiya	900	55	Yasunaga	80
7	Meekanuwa	225	56	Udatenna	15
8	Mullepihilla	2.25	57	Marassana	225
9	Thalatuoya	225	58	Kandehandiya	450
10	Ankumbura	150	59	Medadumbara – 04 Nos.	400 each
11	Galahinna	150	60	Imbulpiyita	250
12	Galagedara water wells	25	61	Stadium G/R	1,000
13	Galagedara Reservoir	900	62	Sozakele	1,000
14	Minigamuwa	27	63	Shamrock	450
15	Para Deka	600	64	Polgolla	100
16	Mount Temple	1,800	65	Kahalla	600
17	Sakkarankotuwa	90	66	Balanagala	450

No.	location	Capacity (m ³)	No.	location	Capacity (m ³)
18	Dartry	70	67	Uyanwatta	900
19	Doluwa	225	68	Polgolla back wash	150
20	Pussellawa	150	69	Bangalawatta	100
21	Elpitiya	400	70	Pihilladeniya	525
22	Weligalla	225	71	Napana	150
23	Atlonwatta	650	72	Pattiyatenna	100
24	Welomboda	1,250	73	Bolagala intake site	20
25	Thundeniya	350	74	Bolagala Reservoir site	150
26	Ulapane	625	75	Medawala	300
27	Thembiligala	400	76	Bokkawa - Navinnapitiya	300
28	Ethagala	400	77	Nillambe	400
29	Mariyawatta	90	78	Megoda Kalugamuwa	225
30	Hantara – R1	1,350	79	Egoda Kalugamuwa	2,000
31	Hantana – R2	385	80	Daulagala	1,100
32	Hantana – R4	18	81	Hiddaula	450
33	Gahagoda	300	82	Meewatura	1,000
34	Gahagoda lower	300	83	Angunawala	1,700
35	Yatihalagala	150	84	Prospect Hill	1,550
36	Kulugammana	300	85	Augustwatta	450
37	Rajapihilla	300	86	Bowalawatta	820
38	Katugasthota	2,100	87	Mahakanda	175
39	Arattana	920	88	Mobray – 1	425
40	Madolkele	225	89	Mobray – 2	300
41	Upper Buluwemuduna	80	90	Kendakaduwa	294
42	Ahaspokuna	920	91	Karuwalawatta	475
43	Menikhinna -1	225	92	Kehelwala	1,100
44	Menikhinna -2	225	93	Eriyagama	860
45	Wijesirigama	225	94	Madarangoda	593
46	Digana	450	95	Lagamuwa	600
47	BOI	1,400	96	Maligatenna	356
48	Kolongaswatta	100	97	Panabokka	536
49	Balagolla CWRs – 02 Nos.	50 & 150	98	Balagolla reservoir	450

Water Storage Tanks – Elevated Towers

No.	location	Capacity (m ³)	No.	location	Capacity (m ³)
1	Mariyawatta	1,500	3	Dambarawa	175
2	Gamudawa -1	90	4	Gamudawa - 2	225

1.2 Matale District

Water treatment plants

No.	location	Capacity (m ³ /day)	No.	location	Capacity (m ³ /day)
1	Dambulla	4,000	5	Warapitiya	2,000
2	Matale	15,000	6	Ukuwela	900
3	Pussella	300	7	Naula	1,700
4	Udatenna	4,200			

Water Storage Tanks – Ground Reservoirs

No.	location	Capacity (m ³)	No.	location	Capacity (m ³)
1	Dambulla CWR	225	6	Udatenna	600
2	Dambulla G/R	650	7	Ukuwela	2
3	Matale CWR – 02 Nos.	600 each	8	Pussella	150
4	Palapathawela	450	9	Naula	225
5	Kandedgedara	2,500			

1.3 Nuwaraeliya District

Water treatment plants

No.	location	Capacity (m ³ /day)	No.	location	Capacity (m ³ /day)
1	Ginigathhena	3,600	7	Thalawakele	1,000
2	Poondalu Oya	800	8	Nallatanniya	18
3	Hatton – high level	4,500	9	Rikillagaskada	4,800
4	Hatton – low level	N/A	10	Walapane	3,600
5	Kotagala	900	11	Ragala	1,650
6	Maskeliya	3,000			

Water Storage Tanks – Ground Reservoirs

No.	location	Capacity (m ³)	No.	location	Capacity (m ³)
1	Ginigathhena	800	10	Rikillagaskada	600
2	Ambagamuwa	300	11	Poramadulla	300
3	Poondalu Oya	150	12	Kottala	225
4	Hatton high level	600	13	Hanguranketha	200
5	Hatton low level - 02 Nos.	300 & 105	14	Walapane	900
6	Kotagala	225	15	Nildan	70
7	Maskeliya	600	16	Ragala CWR	225
8	Thalawakele	450	17	Ragala tea estate	200
9	Nallatanniya	80	18	Ragala town	175

2. EASTERN PROVINCE/DIVISION

2.1 Trincomalee District

Water treatment plants

No.	location	Capacity (m ³ /day)	No.	location	Capacity (m ³ /day)
1	Patchannoor	8,500			

Water Storage Tanks – Ground Reservoirs

No.	location	Capacity (m ³)	No.	location	Capacity (m ³)
1	Patchannoor	3,000			
2	Pallikudyiruppu	60			

Water Storage Tanks – Elevated Towers

No.	location	Capacity (m ³)	No.	location	Capacity (m ³)
1	Patalipuram	60			
2	Palatoppur	1,000			
3	Muttur Town	1,500			

2.2 Ampara District:

N/A

2.3 Batticaloa District

Water treatment plants

No.	location	Capacity (m ³ /day)	No.	location	Capacity (m ³ /day)
1	Vavunativu	40,000			

Water Storage Tanks – Ground Reservoirs

No.	location	Capacity (m ³)	No.	location	Capacity (m ³)
1	Vavunativu	7,000			
2	Batticaloa Town	2,500			

Water Storage Tanks – Elevated Towers

No.	location	Capacity (m ³)	No.	location	Capacity (m ³)
1	Chenkalady	1,250	5	Kattankudy	2,000
2	Eravur	2,000	6	Manmunai Pattu	1,000
3	Manmunai North	2,000	7	Air Field	750
4	Kallady	1,250	8	Batticaloa	650

3. NORTH CENTRAL PROVINCE/DIVISION

3.1 Anuradapura District

Water treatment plants

No.	Location	Capacity (m ³ /day)	No.	location	Capacity (m ³ /day)
1	Thuruwila	21,000			
2	Nuwarawewa	13,500			
3	Thissawewa	4,500			

Water Storage Tanks – Ground Reservoirs

No.	Location	Capacity (m ³)	No.	location	Capacity (m ³)
1	Thuruwila	1,750			
2	Wijayapura	4,500			
3	Nuwarawewa	1,155			
4	Jaffna Junction	1,000			
5	Mihinthale	225			

Water Storage Tanks – Elevated Towers

No.	location	Capacity (m ³)	No.	location	Capacity (m ³)
1	Thalawa	1,000	8	Kurundankulama	1,000
2	Nachchaduwa	450	9	Mihinthale	225
3	Wijayapura	1,500	10	Lolugaswewa	225
4	Saliyapura	1,000	11	Thissawewa	225
5	Devanampiyatissapura	175	12	Udamaluwa	30
6	Stage I	562	13	Stage II	1,350
7	Stage III	1,350	14	Sinnikulama	1,000

3.2 Polonnaruwa District

Water treatment plants

No.	location	Capacity (m ³ /day)	No.	location	Capacity (m ³ /day)
1	Gallella	13,500			
2	Parakrama Samudra				

Water Storage Tanks – Ground Reservoirs

No.	location	Capacity (m ³)	No.	location	Capacity (m ³)
1	Gallella	1,700			
2					

Water Storage Tanks – Elevated Towers

No.	location	Capacity (m ³)	No.	location	Capacity (m ³)
1	Sewagama	750	5	New Town	500
2	Gallella	1,000	6	New Town	350
3	Bendiwewa	1,250			
4	Hospital Junction	500			

4. NORTH WESTERN PROVINCE/DIVISION

4.1 Kurunegala District

N/A

4.2 Puttalam District

N/A

5. NOTHERN PROVINCE/DIVISION

5.1 Jaffna District

N/A

5.2 Vavuniya District

N/A

5.3 Mannar District

N/A

5.4 Kilinochchi District

N/A

5.5 Mulative District

N/A

6. SABARAGAMUWA PROVINCE/DIVISION

6.1 Rathnapura District

Water treatment plants

No.	location	Capacity (m ³ /day)	No.	location	Capacity (m ³ /day)
1	Balangoda	3,500	6	Nivithigala	1,200
2	Eheliyagoda	1,400	7	Rathnapura	6,500
3	Embilipitiya	13,500	8	Udawalawa	9,000
4	Kahawatta	1,500	9	Godakawela	4,500
5	Pelmadulla	3,000	10	Kiriella	950

Water Storage Tanks – Ground Reservoirs

No.	location	Capacity (m ³)	No.	location	Capacity (m ³)
1	Bankiyawaththa	685	9	Pelmadulla	900
2	Poskombe	75	10	Udawalawa	2,000
3	Rassagala	75	11	Masimbula - 1	900
4	Karawketiya	75	12	Masimbula - 2	100
5	Randoluuyanagama	20	13	Nivithigala	100
6	Embilipitiya	1,500	14	Akkarapanaha - 1	100
7	Kahawatta - 1	900	15	Akkarapanaha - 2	100
8	Kahawatta - 2	450			

Water Storage Tanks – Elevated Towers

No.	location	Capacity (m ³)	No.	location	Capacity (m ³)
1	Udawalawa - 1	675	6	Embilipitiya -1	850
2	Udawalawa - 2	225	7	Embilipitiya -2	1,000

6.2 Kegalle District

Water treatment plants

No.	location	Capacity (m ³ /day)	No.	location	Capacity (m ³ /day)
1	Moronthota	14,000	7	Ruwanwella	2,200
2	Hiriwadunna	5,000	8	Kannaththota	650
3	Mawanella	9,700	9	Bulathohupitiya	400
4	Aranayaka	900	10	Gonagaldeniya	80
5	Warakapola	1,150	11	Yatyanthota	900
6	Dehiovita	820			

Water Storage Tanks – Ground Reservoirs

No.	location	Capacity (m ³)	No.	location	Capacity (m ³)
1	Mirihella	1,800	10	Kottawaththa	600
2	Hettimulla	1,000	11	Gandiwela	350
3	Kankeriya	650	12	Dodanthale	300
4	Hiriwadunna WTP	450	13	Kadigamuwa	225
5	Rambukkana	450	14	Warakapola	450
6	Kuruduhinna	680	15	Dehiowita	195
7	Madana	500	16	Bulathkohupitiya	100
8	Habudugala	70	17	Bangalawatta	75
9	Olgankanda	70	18	Mawanella sump	600

Water Storage Tanks – Elevated Towers

No.	location	Capacity (m ³)	No.	location	Capacity (m ³)
1	Ruwanwella	450	3	Uyanwaththa	150
2	Edurapotha	450	4		

7. SOUTHERN PROVINCE/DIVISION**7.1 Hambantota District****Water treatment plants**

No.	location	Capacity (m ³ /day)	No.	location	Capacity (m ³ /day)
1	Ambalantota	30,000	8	Ranna/ Hungama	16,000
2	Sooriyawewa	2,400	9	Tangalle	9,000
3	Ridiyagama	1,200	10	Beliatta	1,200
4	Tissamaharamaya	3,800	11	Walasmulla/ Kirama	300
5	Lunugamwehera	11,900	12	Muruthawela	5,000
6	Kataragama	8,000	13	Katuwana	850
7	Angunakolapalassa	1,800			

Water Storage Tanks – Ground Reservoirs

No.	location	Capacity (m ³)	No.	location	Capacity (m ³)
1	Weeraketiya Kondagala	500	6	Beliatta Hathbodiya	500
2	Walasmulla	90	7	Bogahapalassa	225
3	Kirama	90	8	Samuwel Mawatha (Tangalle)	500
4	Beliatta Kudahella -1	500	9	Kirinda	180
5	Beliatta Kudahella -2	250	10	Kachcheriya	250

Water Storage Tanks – Elevated Towers

No.	location	Capacity (m ³)	No.	location	Capacity (m ³)
1	Muruthawela	680	21	Karakahawela	450
2	Mandaduwa	115	22	Kadiragoda	625
3	Lunugamwehera	680	23	Samuwel Mawatha	300
4	Weerawila	450	24	Palapotha	1,000
5	Unatuwawa	135	25	Kadurupokuna	80
6	Mattala	90	26	Vitharandeniya	225
7	Beralihela	320	27	Nonagama	450
8	Angunakolawewa	50	28	Ekkassa	1,000
9	Beliatta - Hathbodiya	250	29	Ambalantota	682
10	Sooriyawewa	600	30	Bolana	1,000
11	Tissamaharamaya	125	31	Mirijjawila (wineglass)	80
12	Deberawawa	225	32	Mirijjawila	1,500
13	Kirinda	90	33	Ballagaswawa	1,000
14	Kataragama	450	34	Hambantota - Jail street	482
15	Sella Kataragama	225	35	Hambantota - Kachcheriya	450
16	Vadihitikanda	30	36	Siribopura	1,000
17	Gunudawa	90	37	Keliyapura	750
18	Eraminiyaya	275	38	Udamalala	150
19	Mahawaliya	275	39	Ridiyagama	450
20	Wadigala	1,000			

7.2 Galle District**Water treatment plants**

No.	location	Capacity (m ³ /day)	No.	location	Capacity (m ³ /day)
1	Wakwella	30,000	4	Pitigala	170
2	Hapugala	32,000	5	Udugama	1,200
3	Baddegama	36,000			

Water Storage Tanks – Ground Reservoirs

No.	location	Capacity (m ³)	No.	location	Capacity (m ³)
1	Beekka*	9,000	7	Galagoda	1,500
2	Hapugala	12,000	8	Mahagoda	3,000
3	Kovulhena	7,000	9	Nakanda	1,500
4	Halloluwagoda	7,000	10	Balapitiya	45
5	Ambalangoda	2,760	11	Kosgoda	1,500
6	Pitigala	160	12	Udugama	225

*This is a PC tank constructed in 1976, Capacity - 9000m³, Shape - Circular, Diameter - 116 feet, height- 30 feet, Wall thickness – 9 inches, Roof – 4 inch thick dome roof.

Water Storage Tanks – Elevated Towers

No.	location	Capacity (m ³)	No.	location	Capacity (m ³)
1	Ahangama	225	6	Dodanduwa	225
2	Baddegama	90	7	Ratgama	225
3	Elpitiya	225	8	Gonapinuwala	360
4	Batapola	225	9	Piyagama	45
5	Hikkaduwa	225			

7.3 Matara District**Water treatment plants**

No.	Location	Capacity (m ³ /day)	No.	location	Capacity (m ³ /day)
1	Hallala - Weligama	7,500	4	Urubokka	135
2	Malimbada	45,000	5	Deniyaya	410
3	Nadugala	4,000	6	Radampala	175

Water Storage Tanks – Ground Reservoirs

No.	Location	Capacity (m ³)	No.	location	Capacity (m ³)
1	Weligama - Kottegoda	910	8	Gandara	225
2	Dickwella	1,200	9	Uyanwatta - Matara	1,800
3	Kudawella	112.5	10	Isadeen Town	1,250
4	Yayawatta - Matara	225	11	Mirissa	250
5	Browns Hill No.01	1,800	12	Kottegoda	225
6	Browns Hill No.02	1,170	13	Weligama - Charley Mount	450
7	Weligama - Galkaduhena	450	14	Weligama - Hallala	450

Water Storage Tanks – Elevated Towers

No.	Location	Capacity (m ³)	No.	location	Capacity (m ³)
1	Nupe - Matara*	900	7	Naigala	450
2	Gabadaweediya *	900	8	Dickwella	675
3	Mirissa	125	9	Medagoda	180
4	Kamburugamuwa	450	10	Malimbada	948
5	Gandara	450	11	Kottegoda - Matara	450
6	Devinuwara	680			

*These two RC tanks initially constructed as RC around in 1960, had been Pre-stressed around in 1992 under ADB 02nd Project as a renovation for enhancing the durability.

8. UVA PROVINCE/DIVISION

8.1 Badulla District

Water treatment plants

No.	Location	Capacity (m ³ /day)	No.	location	Capacity (m ³ /day)
1	Badulla – Eladaluwa	9,000	5	Ambagasdowa	3,000
2	Badulla – B'pura	3,400	6	Bandarawela	2,500
3	Diyathalawa	9,500	7	Mahiyanganaya	2,000
4	Welimada	2,000	8	Girandurukotte	1,000

Water Storage Tanks – Ground Reservoirs

No.	location	Capacity (m ³)	No.	location	Capacity (m ³)
1	<u>Eladaluwa</u>	2,700	28	Bandarawela Jalashaya -1	420
2	Badulla – B'pura	380	29	Bandarawela Jalashaya -2	420
3	Kehelkotuwa	1,000	30	Bandarawela Jalashaya -3	110
4	Pinarawa	1,100	31	Viduhalpathana	110
5	Alugolla	190	32	Diganathana	170
6	Alugolla pathana	25	33	Diyabibila	110
7	Black tank	432	34	Vishaka tank	110
8	Weeriyapira tank	190	35	Kolathanna	70
9	Welangolla	20	36	Liyangahawela	22
10	Madapathana -1	25	37	Keppitipola tank	450
11	Madapathana - 2	1,000	38	Dimuthugama	45
12	Madapathana -3	225	39	Divurungama	45
13	Singhepura -1	20	40	Ambagolla	45
14	Singhepura -2	20	41	Silmiyapura	45
15	Nelumgama -1	225	42	Divithotawela	180
16	Nelumgama - 2	100	43	Boralanda tank	110
17	Diyathalawa tank	910	44	Boralanda 04 th mile	980
18	Amunukale	70	45	Guruthalawa	90
19	Kolathanna	70	46	Seelathanna	90
20	Welimada tank	250	47	Haldummulla	112
21	Welimada Hospital tank	180	48	Bogahakumbura	122
22	Welimada booster tank	160	49	Madowita	90
23	Ambagasdoowa	450	50	Haputhale – tank 1	90
24	Lunuwaththa	90	51	Haputhale – tank 2 & 3	45 & 5
25	Madawela	90	52	Kandaketiya	50
26	Hali ella tank	225	53	Mahiyangana - Gamudawa	227
27	Hali ella Navoda – 4 tanks	each in 80	54	Girandurukotte	562

Water Storage Tanks – Elevated Towers

No.	location	Capacity (m ³)	No.	location	Capacity (m ³)
1	Mahiyanganaya	909	2	Mahiyanganaya Gamudawa	227

8.2 Monaragala District**Water treatment plants**

No.	location	Capacity (m ³ /day)	No.	location	Capacity (m ³ /day)
1	Wellawaya	6,000	7	Badalkumbura	500
2	Buttala	3,000	8	Nakkala	400
3	Sewanagala	1,800	9	Siyambalanduwa	750
4	Thanamalwila	600	10	Okkampitiya	1,700
5	Monaragala	3,000	11	Medagama	1,200
6	Bibile	1,200			

Water Storage Tanks – Ground Reservoirs

No.	location	Capacity (m ³)	No.	location	Capacity (m ³)
1	Icepheella	500	10	Buttala (TP)	500
2	Yalabowa	500	11	Buttala (Gamudawa)	320
3	Yalabowa	1200	12	Thanamalwila	50
4	Jeelone	500	13	Bibile (TP)	400
5	Jeelone (New)	500	14	Bibile	180
6	Jayasengama	500	15	Medagama	150
7	Siyambalanduwa - 1	50	16	Sewanagala (TP)	50
8	Siyambalanduwa - 2	400	17	Sewanagala	240
9	Okkampitiya	225			

Water Storage Tanks – Elevated Towers

No.	location	Capacity (m ³)	No.	location	Capacity (m ³)
1	Buttala (Gamudawa)	90	4	Sewanagala	225
2	Buttala (Site)	225	5	Thanamalwila	90
3	Siyambalanduwa	225			

9. WESTERN PROVINCE

9.1 WESTERN CENTRAL DIVISION - Colombo District

Water treatment plants

No.	location	Capacity (m ³ /day)	No.	location	Capacity (m ³ /day)
1	Labugama	34,900	4	Ambatale New plant	180,000
2	Kalatuwawa	65,100	5		
3	Ambatale Old plant	243,000			

Water Storage Tanks – Ground Reservoirs

No.	location	Capacity (m ³)	No.	location	Capacity (m ³)
1	Labugama C.W.R	4,360	16	Jayawadanagama	1,364
2	Kalatuwawa C.W.R	5,000	17	Jubilee (Old)	4,500
3	Ambatale C.W.R	17,700	18	Jubilee (New)	11,500
4	Lindel C.W.		19	Maharagama (Old)	3,450
5	Kethena C.W.R		20	Maharagama (New)	3,450
6	Elie House (Old)	37,500	21	Dehiwala (CMC)	17,700
7	Elie House (New)	13,000	22	Dehiwala (G4)	6,800
8	Maligakanda (Old)	36,300	23	Moratuwa (Old) (G5)	4,600
9	Maligakanda (New)	13,630	24	Moratuwa (New)	4,037
10	I.D.H Mulleriyawa		25	Homagama	450
11	Kolonnawa	10,900	26	Homagama South	2,900
12	Hokandara	920	27	Pelanwatta	2,600
13	Battaramulla	5,800	28	Pannipitiya	4,000
14	Mattegoda	1,136	29	A Reservoir at south of Paliament	
15	Gothatuwa	227	30		

Water Storage Tanks – Elevated Towers

No.	location	Capacity (m ³)	No.	location	Capacity (m ³)
1	Ambatale	1,000	19	Kolonnawa (G1)	2,000
2	Ambathale South	2,000	20	Moragasmulla (G2)	2,000
3	Raddolugama	455	21	Weragodalla (G0)	318
4	Kaduwela	2,000	22	XXXXXXXXXXXX (G13)	
5	General Hospital Colombo		23	Mirihana (G8)	1,500
6	I.D.H Mulleriyawa		24	Pagoda (G3)	2,000
7	Hokandara	1,000	25	Maharagama	954
8	Battaramulla	2,000	26	Miriswatta	2,230
9	Jayawadanagama	681	27	Kohuwala (G9)	1,500
10	Dehiwala (G10)	1,500	28	Moratuwa	1,500
11	Soysapura old		29	Keselwatta	1,000
12	Soysapura New		30	Homagama South	570
13	Homagama	125	31	Pannipitiya	1,000

No.	location	Capacity (m ³)	No.	location	Capacity (m ³)
14	Pelanwatta	1,000	32	Mattegoda	
15	Maligawatta		33	Kirulapone	1,000
16	Rukmalgama		34	Maning Town	
17	Gothatuwa New	1,500	35	Gothatuwa Old	
18	Gothatuwa	318	36	Bluemendel	2,000

9.2 WESTERN NORTH DIVISION - Gampaha District

Water treatment plants

No.	Location	Capacity (m ³ /day)	No.	location	Capacity (m ³ /day)
1	Kelani Right Bank Phase 1	181,800	4		
2			5		
3					

Water Storage Tanks – Ground Reservoirs

No.	Location	Capacity (m ³)	No.	location	Capacity (m ³)
1	Churchhill (Old)	18,184	10	Ragama (Old)	681
2	Churchhill (New)	18,000	11	Ragama (New)	2,500
3	Biyagama	4,500	12	Welisara	900
4	Dompe	450	13	Kelani Sacred City	
5	Mankada	910	14	Ja-Ela (Low)	2,500
6	Kadawatha	6,000	15	Ja-Ela (High)	900
7	Kandana	2,500	16	Ekala	2,500
8	Katunayake EPZ	4,450	17	Hekitta	450
9	Kandana C.W.R		18	Raddolugama	1,000

Water Storage Tanks – Elevated Towers

No.	location	Capacity (m ³)	No.	location	Capacity (m ³)
1	Biyagama	450	11	Kadawatha (Old)	675
2	Biyagama EPZ	1,630	12	Kadawatha (New)	1,500
3	Malwana	450	13	Welisara (Old)	227
4	Dompe	225	14	Welisara (New)	1,500
5	Ragama (New)	1,000	15	Kandana	1,000
6	Unkown 1 (Aniyakanda?)	90	16	Kelani Sacred City	
7	Unkown 2 (Ragama Old?)	90	17	Thalagolla	227
8	Unkown 3 (Ragama Hospital?)	90	18	Delgoda	750
9	Pamunugama	225	19	Katunayaka	
10	Katunayaka Airport	60			

9.3 WESTERN NORTH DIVISION - Kaluthara District

Water treatment plants

No.	location	Capacity (m ³ /day)	No.	location	Capacity (m ³ /day)
1			4		
2			5		
3					

Water Storage Tanks – Ground Reservoirs

No.	location	Capacity (m ³)	No.	location	Capacity (m ³)
1	Panadura (G7)	2,600	9	Maskaduwa	225
2	Horana (Old)	1,135	10	Bombulawa	225
3	Horana (New)	15,000	11	Lagoswatta	250
4	Panadura	225	12	Araliya	80
5	Kalutara Alwis Place	6,818	13	Maggona	
6	Beruwala	1,360	14	Darga Town	1,560
7	Wattewa Samp1		15	Wattewa Samp2	225
8	Wattewa Samp3	225	16		

Water Storage Tanks – Elevated Towers

No.	location	Capacity (m ³)	No.	location	Capacity (m ³)
1	Panadura (G12)	409	9	Kesewatta West	1,500
2	Horana		10	Jumburaliya	1,000
3	Raigama	1,000	11	Kumbuka	1,000
4	Bandaragama	225	12	Panadura East	
5	Kiriberiya	1,000	13	Wadduwa	1,360
6	Maskaduwa	275	14	Araliya	40
7	Payagola	455	15	Maggona	227
8	Beruwala	1,360	16		

CENTRAL PROVINCE/DIVISION

Kandy District

1. Galaha – Delthota Water Supply Project

Current status: Feasibility Study stage.

Details of facilities included in the project/ schemes:

Augmentation of Delthota Water Supply Scheme: New intake structure with a flow monitoring arrangement at Lookandura Construction of Treatment Plant at Lookandura – 5000 m³/day; Construction of new reservoir – 200m³ capacity; Construction of new reservoir – 400m³ capacity

Augmentation of Galaha Water Supply Scheme: Rehabilitation of existing intakes at Hythe and Kithulmulla area with flow measurement arrangement; Construction of 50m³ capacity Clear water tank; Construction of new reservoir – 400m³ capacity.

EASTERN PROVINCE/DIVISION

NORTH CENTRAL PROVINCE/DIVISION

Anuradapura District

2. Anuradapura North Integrated Water Supply Project

Current status: Board approval to be received. TEC – 8860.70 SLRs in Millions

Type of the Contract: Not yet finalized.

Client/Owner: NWSDB

Procurement of the Consultant: NIHON SUIDO Consultant Co. Ltd, NJS

Procurement of the Contractor: Not yet finalized.

Financial status: Not yet finalized.

Schedule: Not yet finalized.

Details of facilities included in the project/ schemes:

Item No.	Component	Location		Capacity (m ³ /day)	
1	Intake structures	Wahalkada Wewa (Stage 1 & 2)		14,400 & 28,800	
		Mahakandara Wewa (Stage 1 & 2)		9,400 & 18,800	
2	Water treatment plants	Wahalkada (Stage 1 & 2)		14,400 & 28,800	
		Mihintale (Stage 1 & 2)		9,400 & 18,800	
3	Ground Reservoirs				
		Location	Capacity (m³)	Location	Capacity (m³)
		Kahatagollewa	1,000	Kahatagasdigiliya	500
		Weerasole	1,500	Rambewa	1,500
		Kebithigollewa	750	Medewachchiya	1,000
		Horoupatana	1,000		

4	Elevated Towers			
	Bogahawewa	2,000	Ethakada	750
	Wahalkada	500	West Horoupatana	750
	Kahatagollewa	250	Horoupatana	500
	Kah-keb	250	Rathmalgahawewa	500
	Kebithigollewa	500	East Rambewa	250
	North Horoupatana	250	Hamillewa	1,250
	Rambewa	1,250	Kahatagasdigiliya	1,500
	Isinbessagala	2,000		

3. Anuradapura South Phase II Integrated Water Supply Project

Current status: Board approval to be received. TEC – 11,476.70 SLRs in Millions

Type of the Contract: Not yet finalized.

Client/Owner: NWSDB

Procurement of the Consultant: Not yet finalized.

Procurement of the Contractor: Not yet finalized.

Financial status: Not yet finalized.

Schedule: Not yet finalized.

Details of facilities included in the project/ schemes:

Item No.	Component	Location		Capacity (m ³ /day)
1	Intake structures	Sources: Turuwilawewa, Tissawewa, Nuwarawewa		N/A
2	Water treatment plants	N/A		N/A
3	Ground Reservoirs			
	Location	Capacity (m ³)	Location	Capacity (m ³)
	Kahatagollewa	1,000	Kahatagasdigiliya	500
	Weerasole	1,500	Rambewa	1,500
	Kebithigollewa	750	Medewachchiya	1,000
	Horoupatana	1,000		
4	Elevated Towers			
	Aluthgama	1,000	Thirrappane	450
	Elayapaththuwa	1,000	Pahala Talawa	750
	Mihinthale	750	Hidogama	600
	Mahabulankulam	750	Galkulama	1,000
	Andarawewa	2,000		

4. Parasangawewa Water Supply Project

Current status: Cabinet approval to be received. TEC – 31.6 SLRs in Millions

Details of facilities included in the project/ schemes: Water source – Extension from Nuwarawewa. Other details are not available.

5. Eppawala Water Supply Project

Current status: Preparation of pre-feasibility report is in progress. TEC – 2,364 SLRs in Millions

Details of facilities included in the project/ schemes: Water source – Koonwewa. 01 Nos. Ground Reservoir – 800 m³ Capacity. 02 Nos. of 1,500 m³ capacity Towers

6. Mahawachchiya Water Supply Project

Current status: PAC approval has been received. TEC – 31,980 SLRs in Millions

Details of facilities included in the project/ schemes: Water source – Koonwewa. Other details are not available.

7. Thambuttegama Water Supply Project

Current status: Board approved. NPD recommendation to be received. Cabinet approval has been received. TEC – 155,000 SLRs in Millions

Details of facilities included in the project/ schemes: Water source – Thambuttegama tank. No Ground reservoirs. 03 Nos. of 1,500 m³ Towers

8. Mahanelubewa Water Supply Project

Current status: PAC approval received. Ready to start. TEC – 123.8 SLRs in Millions

Details of facilities included in the project/ schemes: Water source – Nuwarawewa. Other details are not available.

9. Padaviya Water Supply Project

Current status: PAC approval received. Ready to start. TEC – 2055 SLRs in Millions

Details of facilities included in the project/ schemes: Water source – Padaviya tank. Other details are not available.

10. Bottled water Project

Current status: Cabinet approval to be obtained. TEC – 146 SLRs in Millions

Details of facilities included in the project/ schemes: Water source – Thuruwila wewa. Other details are not available.

11. Rajanganaya Water Supply Project

Current status: Preparation of pre-feasibility report is in progress. TEC – 1746 SLRs in Millions

Details of facilities included in the project/ schemes: Water source – Rajanganaya wewa. Other details are not available.

12. Galnewa – Bulnewa Water Supply Project

Current status: Preparation of pre-feasibility report is in progress. TEC – 1945 SLRs in Millions

Details of facilities included in the project/ schemes: Water source – Kalawewa left main channel. Other details are not available.

13. Habarana Integrated Water Supply Project

Current status: Preparation of pre-feasibility report is in progress. TEC – 1800 SLRs in Millions

Details of facilities included in the project/ schemes: Water source – Huruluwewa. Other details are not available.

Polonnaruwa District

1. Welikanda Water Supply Project

Current status: Not yet implemented and at proposal stage.

Details of facilities included in the project/ schemes:

Item No.	Component	Location		Capacity (m ³ /day)
1	Ground Reservoirs			
	Location	Capacity (m³)	Location	Capacity (m³)
	Galmadu sump	1,500	Dalukana	500
2	Elevated Towers			
	Manampitiya	450	Muthgalla	750
	Dimbulagala	450	Peniyakulum	750
	Kadawathmadu	450	Sinhapura	750
	Galmadu	750		

2. Lankapura (Phase 1) Water Supply Project

Current status: PAC approval has been received.

Details of facilities included in the project/ schemes: Water source – Peri Aru; Intake – 9,000 m³/day; WTP at Sangabodigama – 9,000 m³/day; Elevated towers - Patunugama - 750 m³, Lankaputhra - 750 m³ and Hingurakadamana - 450 m³

3. Welikanda Small Town WSS – 03

Current status: Preparation of feasibility report is in progress. TEC – 400 SLRs in Millions

Details of facilities included in the project/ schemes: Other details are not available.

4. Welikanda Small Town WSS – 02

Current status: Preparation of feasibility report is in progress. TEC – 300 SLRs in Millions

Details of facilities included in the project/ schemes: Other details are not available.

5. Manampitiya Small Town WSS

Current status: Preparation of feasibility report is in progress. TEC – 300 SLRs in Millions

Details of facilities included in the project/ schemes: Other details are not available.

6. Senapura Small Town WSS

Current status: Preparation of feasibility report is in progress. TEC – 1800 SLRs in Millions

Details of facilities included in the project/ schemes: Other details are not available.

7. Dimbulagala WSS

Current status: Preparation of feasibility report is in progress. TEC – 850 SLRs in Millions

Details of facilities included in the project/ schemes: Other details are not available.

8. Kalukale Small Town WSS

Current status: Preparation of feasibility report is in progress. TEC – 760 SLRs in Millions

Details of facilities included in the project/ schemes: Other details are not available.

9. Pimburattewa Small Town WSS

Current status: Preparation of feasibility report is in progress. TEC – 760 SLRs in Millions

Details of facilities included in the project/ schemes: Other details are not available.

10. Elahera WSS

Current status: Preparation of feasibility report is in progress. TEC – 2,100 SLRs in Millions

Details of facilities included in the project/ schemes: Water Source – Yoda Ela; other details are not available.

11. Medirigiriya WSS

Current status: Preparation of feasibility report is in progress. TEC – 1,890 SLRs in Millions

Details of facilities included in the project/ schemes: Water Source – Kaudulla Tank; other details are not available.

NORTH WESTERN PROVINCE/DIVISION

Puttalam District

1. ADB assisted Dry Zone Urban Water and Sanitation Project – Sri Lanka

Design, Construction Supervision and Management Support (Package A)

Current status: Designs finalized. Not yet selected the Contractors.

Type of the Contract: Not yet finalized.

Client/Owner: NWSDDB

Procurement of the Consultant: ICB Package; SMEC-Ceywater- Ocyana

Procurement of the Contractor: Not yet selected.

Financial status: Loan, Financial assistance by ADB

Schedule: Not yet finalized.

Details of facilities included in the project/ schemes:

Item No.	Component	Location	Capacity (m ³ /day) or m ³
1	Raw water intakes	Chilaw	12,000
2	Water treatment plants	Puttalam	12,000
3	Ground Reservoirs	Kalladi	1,000

NORTHERN PROVINCE/DIVISION

Kilinochchi District

1. Kilinochchi Water Supply Project

Project for Rehabilitation of Kilinochchi Water Supply Scheme by NWSDDB

Current status: Construction works are in progress

Type of the Contract: Plant and Design – Build Contract for Civil and M&E works

Client/Owner: NWSDDB

Procurement of the Consultant: NJS

Procurement of the Contractor: DAZHO

Financial status: Grant

Schedule:

Details of facilities included in the project/ schemes:

Item No.	Component	Location	Capacity (m ³ /day) or m ³
1	Water treatment plants	Maruthanagar	3,800
2	Elevated Towers	At Collage, Ratnapuram	1,000
		Paranthan Town	450

Jaffna District

1. Jaffna – Kilinochchi water supply and Sanitation Project

Current status:

Type of the Contract:

Client/Owner: NWSDB

Procurement of the Consultant:

Procurement of the Contractor:

Financial status:

Schedule:

Details of facilities included in the project/ schemes:

Item No.	Component	Location		Capacity (m ³ /day) or m ³
1	Raw water intake	Iranamadu		
2	Water treatment plants	Palai		
3	Waste water treatment plant	Kallundai		
2	Ground Reservoirs	Kallundai		
		Aralithurai		
3	Elevated Towers			
	Location	Capacity (m³)	Location	Capacity (m³)
	Punguduthive		Pommaiveli	
	Nainathive		Kondavil	
	Analithive		Nallur	
	Eluvaithive		Old Park	
	Velani		Pooneryn	
	Karainagar		Navatkuli	
	Moolai		Puthur	
	Palai		Mesalai	
Kaddudai		Kodikamam		

Mannar District

2. ADB assisted Dry Zone Urban Water and Sanitation Project – Sri Lanka

Design, Construction Supervision and Management Support (Package A)

Current status:

Type of the Contract:

Client/Owner: NWSDB

Procurement of the Consultant: ICB Package; SMEC-Ceywater- Ocyana

Procurement of the Contractor:

Financial status: Loan

Schedule:

Details of facilities included in the project/ schemes:

Item No.	Component	Location	Capacity (m ³ /day) or m ³
1	Raw water intakes	Tube wells at Murungan	11,500
		Eluthoor	N/A
2	Ground Reservoirs	Murungan	1,500
		Eluthoor	1,500
3	Elevated Towers	Eluthoor	900

SABARAGAMUWA PROVINCE/DIVISION

Rathnapura District

1. Kolonnna – Balangoda Water Supply Project

Design and Construction of a New Water Supply Scheme for Kolonna and Augmentation of Balangoda Water Supply Scheme

Current status: Already implemented. Constructions are in progress.

Type of the Contract: Plant and Design – Build Contract for Civil and M&E works

Client/Owner: NWSDB

Procurement of the Consultant:

Procurement of the Contractor: ICB Package; CFE - Compagnie de Enterprises & Ceywater Consultants

Financial status: Loan

Schedule:

Details of facilities included in the project/ schemes:

Item No.	Component	Location	Capacity (m ³ /day) or m ³
1	Intake structures	Balangoda	7,250
2	Water treatment plants	Balangoda	7,000
3	Ground Reservoirs	Clear Water Tank at Balangoda WTP	500
		Clear Water Tank at Ereporuwa WTP	1,000
		Maduwanwala	500
		Panamure	1,000
		At Bankiyawatta	750
		At Jayanthi Road	1,500
4	Elevated Towers	At Collage, Ratnapuram	1,000
		Paranthan Town	450

2. Eheliyagoda Water Supply Scheme

Current status: In proposal stage

Details of facilities included in the project/ schemes:

Item No.	Component	Location	Capacity (m ³ /day) or m ³
1	Intake structures	Upstream of Kanamediriwala	12,500
2	Water treatment plants	Wellangallawaththa	12,500
3	Ground Reservoirs	Wellangallawaththa	1,000
		Parakaduwa	225

3. Pambahinna Water Supply Scheme

Current status: In proposal stage

Details of facilities included in the project/ schemes:

Item No.	Component	Location	Capacity (m ³ /day) or m ³
1	Intake structures	Welioya	3,500
2	Water treatment plants	Pambahinna	3,500
3	Ground Reservoirs	For existing plant	900
		Sabaragamuwa University Premises	225

4. Greater Rathnapura Water Supply Scheme – Phase 1

Current status: In proposal stage

Details of facilities included in the project/ schemes:

Item No.	Component	Location	Capacity (m ³ /day) or m ³
1	Intake structures	Kaluganga at Artigala Mw	13,000
2	Water treatment plants	Muwagama	13,000
3	Ground Reservoirs	New Town	2,500

5. Greater Rathnapura Water Supply Scheme – Phase 2

Current status: In proposal stage

Details of facilities included in the project/ schemes:

Item No.	Component	Location	Capacity (m ³ /day) or m ³
1	Intake structures	Palabaddala	14,000
2	Water treatment plants	Palabaddala	14,000

Kegalle District

1. Hemmathagama Water Supply Scheme

Current status: In proposal stage

Details of facilities included in the project/ schemes:

Item No.	Component	Location	Capacity (m ³ /day) or m ³
1	Intake structures	Asupiniella	24,000
2	Water treatment plants	Hemmathagama	21,000
3	Ground Reservoirs	Hemmathagama	1,000
		Gevilipitiya	1,300
		Ambalakanda	275
		Tharana	850
		Dumbuluwewa	275
		Batawala	1,000
		Dodanthale	2,750
		Kottawatta	1,000
Uyanwatta	350		

2. Warakapola Water Supply Scheme

Current status: In proposal stage

Details of facilities included in the project/ schemes:

Item No.	Component	Location	Capacity (m ³ /day) or m ³
1	Intake structures	Ma Oya	16,000
2	Water treatment plants	Koslanda Estate	16,000
3	Ground Reservoirs	Koslanda WTP premises	750
		Koslanda Estate	1,000
		Kudapallegama	1,200
		Warakapola	1,800
		Udukumbura	1,400

3. Ampagala Water Supply Scheme

Current status: In proposal stage

Details of facilities included in the project/ schemes:

Item No.	Component	Location	Capacity (m ³ /day) or m ³
1	Intake structures	Ambamalla	4,000
2	Water treatment plants	Edurupotha Estate	4,000
3	Ground Reservoirs	Edurupotha Estate	1,000

4. Greater Ruwanwella Water Supply Scheme

Current status: In proposal stage

Details of facilities included in the project/ schemes:

Item No.	Component	Location	Capacity (m ³ /day) or m ³
1	Intake structures	Kelaniganga, Pahalagaragoda	4,400
2	Water treatment plants	N/A	4,000
3	Ground Reservoirs	N/A	200
4	Elevated Towers	N/A	450
		N/A	700
		N/A	700

5. Galigamuwa Water Supply Scheme

Current status: In proposal stage

Details of facilities included in the project/ schemes:

Item No.	Component	Location	Capacity (m ³ /day) or m ³
1	Intake structures	Ma Oya	6,600
2	Water treatment plants	Helamada	6,000
3	Ground Reservoirs	Weeragoda	950
		Yattogoda	600

SOUTHERN PROVINCE/DIVISION

Hambantota District

1. Hambantota – Matara Group Town Water Supply System

Current status: NWSDB has issued RFP for Contractors

Type of the Contract: Plant and Design – Build Contract for Civil and M&E works /unsolicited proposal

Client/Owner: NWSDB

Procurement of the Consultant: No Provisions for a Consultant

Procurement of the Contractor: Not yet selected

Financial status: Soft Loan

Schedule: To commence bid evaluations from January 2014

Details of facilities included in the project/ schemes:

a) Middeniya – Angunakolapelessa Integrated WSS

Item No.	Component	Location	Capacity (m ³ /day) or m ³
1	Intake structures	Chandrika wewa	11,000
2	Water treatment plants	Kepirillakanda, Middeniya	10,000
3	Ground Reservoirs	Gurugodellakanda, Angunakolapelessa	1,000
		Kudagodella, Middeniya	1,000
		Kudagodella, Middeniya	500
		Kepirillakanda, Middeniya	500
		Gonadeniya, Middeniya	225
		Welipitiya, Middeniya	225

b) Barawakumbuka – Rote WSS

Item No.	Component	Location	Capacity (m ³ /day) or m ³
1	Intake structures	Walawe Ganga, Ridiyagama	5,000
2	Water treatment plant	Siyambalakote, Barawakumbuka	4,500
3	Ground Reservoirs	Siyambalakote, Barawakumbuka	450
4	Elevated Towers	Siyambalakote, Barawakumbuka	1,000

a) Muruthawela WSS

Item No.	Component	Location	Capacity (m ³ /day) or m ³
1	Intake structures	Muruthawela Tank	5,500
3	Ground Reservoirs	Walasmulla	500

2. Ruhunupura Water Supply System

Current status: Already implemented. Constructions are in progress.

Type of the Contract: Plant and Design – Build Contract for Civil and M&E works

Client/Owner: NWSDB

Procurement of the Consultant: N/A

Procurement of the Contractor: ICB Package; Competitive bidding

Contractor: Kolon – Pankorea – Yoosin Consortium

Financial status: Loan, by Korea

Schedule:

Details of facilities included in the project/ schemes:

Item No.	Component	Location	Capacity (m ³ /day) or m ³
1	Intake structures	Ridiyagama	40,000
2	Water treatment plants	Buruthakanda (Stage 1 and Stage 2)	17,500
			17,500
3	Ground Reservoirs	Sooriyawewa	1,000
		Andaragasyaya	3,000
		Batampara	1,000
4	Elevated Towers	Galwewa	2,000
		Mahaweli Zone - 1	2,000
		Batampara	2,000

Matara District

1. Hambantota – Matara Group Town Water Supply System

Current status: NWSDB has issued RFP for Contractors

Type of the Contract: Plant and Design – Build Contract for Civil and M&E works /unsolicited proposal

Client/Owner: NWSDB

Procurement of the Consultant: No Provisions for a Consultant

Procurement of the Contractor: Not yet selected

Financial status: Soft Loan

Schedule: To commence bid evaluations from January 2014

Details of facilities included in the project/ schemes:

a) Urubokka WSS

Item No.	Component	Location	Capacity (m ³ /day) or m ³
1	Intake structures	Old Urubokka Oya	2,200
		Umandola Bubula	-
2	Water treatment plants	Goluwandola	2,000
3	Ground Reservoirs	Urubokka	675

b) Deniyaya WSS

Item No.	Component	Location	Capacity (m ³ /day) or m ³
1	Intake structures	Gingaga Ganga, Deniyaya	3,300
2	Water treatment plant	Deniyaya	3,000
3	Ground Reservoirs	Deniyaya	1,000

c) Morawaka WSS

Item No.	Component	Location	Capacity (m ³ /day) or m ³
1	Intake structures	Morawaka	3,300
2	Water treatment plant	Morawaka	3,000
3	Ground Reservoirs	Morawaka	1,000
4	Elevated Tower	Morawaka	20

2. Matara Stage IV Water Supply Project

Current status: Bids submitted by the Contractor's are under evaluations

Type of the Contract: Plant and Design – Build Contract for Civil and M&E works

Client/Owner: NWSDB

Procurement of the Consultant: No provisions for a Consultant

Procurement of the Contractor: ICB Package; Competitive bidding

Financial status: Loan – depend on the selection of the Contractor

Schedule: Not yet defined.

Details of facilities included in the project/ schemes:

Item No.	Component	Location	Capacity (m ³ /day) or m ³
1	Intake structures	Nilwala Ganga, Katuwangoda	30,000
2	Water treatment plants	Malimbada (Stage 1 and Stage 2)	30,000
			30,000
3	Ground Reservoirs	Malimbada	10,000
		Galketiya	5,000
		Kodigahakanda	225
		Dandeniya	2,300
		Miriswatta	1,000
		Yatiana	1,000
4	Elevated Towers	Karagoda Uyangoda	1,000
		Horonduwa	1,000
		Miriswatta	450
		Charley mount – Ranaviru Village	2,000

Galle District

In Galle district there are no new plans available for future constructions or renewals.

UVA PROVINCE /DIVISION

Badulla District

1. Bandarawela Water Supply Scheme

Current status: In proposal stage

Details of facilities included in the project/ schemes:

Item No.	Component	Location	Capacity (m ³ /day) or m ³
1	Intake structures	Uma Oya	N/A
2	Water treatment plants	Mathatilla	N/A
3	Ground Reservoirs	Mathatilla	2,000
		Diyabibila	1,000
		Atthalapitiya	300
		Watagamuwa	200
		Viduhalpathana	600
		Racekanda	500
		Badarawela	500
		Kanigama	600
		Mahaulpatha	300
		Ettalapitiya	300
		Kodikanda	300
		Diyathalawa	1,500
4	Elevated Towers	Diyabibila	80

2. Etampitiya Water Supply Scheme

Current status: In proposal stage

Details of facilities included in the project/ schemes:

Item No.	Component	Location	Capacity (m ³ /day) or m ³
1	Intake structures	Uma Oya	3,000
2	Water treatment plants	Uma Oya	3,000
3	Ground Reservoirs	Mutukandiya	600
		Etampitiya – 02 Nos.	Each 225
		Etampitiya	300
4	Elevated Towers	Diyabibila	80

3. Hambegamuwa Integrated Water Supply Scheme

Current status: In proposal stage

Details of facilities included in the project/ schemes: 4,500m³ capacity Intake & WTP
Source: Duuvili Ella

4. Kandeketiya Integrated Water Supply Scheme

Current status: In proposal stage

Details of facilities included in the project/ schemes: 2,500m³ capacity Intake & WTP
Source: Duuvili Ella

5. Thaldena Integrated Water Supply Scheme

Current status: In proposal stage

Details of facilities included in the project/ schemes: 3,000m³ capacity Intake & WTP
Source: Pahala Dunhinda
Ground Reservoirs: 600,100,100 & 60 m³

Monaragala District

1. Buttala – Monaragala Integrated Water Supply Scheme

Current status: In proposal stage

Details of facilities included in the project/ schemes: 3,500m³ capacity Intake at Menik Ganga; 3,500m³ capacity Intake at Menik Ganga; 2,500m³ capacity Intake at Sumeda Wewa; 6,000m³/day capacity WTP. 250m³ Capacity Ground Reservoir at Weliyaya and 225m³ Capacity elevated tower at Madulla.

2. Buttala Water Supply Scheme

Current status: In proposal stage

Details of facilities included in the project/ schemes: 450m³, 04 Nos. of 80m³ and 650m³ Capacity Ground Reservoirs. 225m³ Ground sump. 225 & 60 m³ capacity elevated towers.

3. Monaragala Water Supply Scheme

Current status: In proposal stage

Details of facilities included in the project/ schemes: Intake – Monaragala Oya; WTP – 2,600m³/day

4. Other Water Supply Scheme

Current status: In proposal stage

Details of facilities included in the project/ schemes:

Badalkumbura – 450 m³/day WTP; Wellawaya – 9,000 m³/day WTP; Medagama – 1,200 m³/day WTP; Bibila – 1, 800 m³/day WTP; Okkampitiya – 1, 200 m³/day WTP; Thanamalvila – 600 m³/day WTP; Siyabalanduwa – 1,200 m³/day WTP; Sewanagala – 1,800 m³/day WTP
Ground Reservoirs: Wellawaya 1,200 m³, 500 m³ and 225 m³

WESTERN PROVINCE – WESTERN NORTH DIVISION

Colombo District

1. Welivita Water Supply Project

Project on Non-revenue Water (NRW) Engineering study, Master Plan update and Institutional Development – Western Province Metropolitan Area Water Supply Master Plan Update

Current status: Feasibility study completed by NIHON SUIDO Consultant Co. Ltd, NJS & Ceywater

Type of the Contract: Not yet selected.

Client/Owner: NWSDB

Procurement of the Consultant: Not yet done.

Procurement of the Contractor: Not yet done.

Financial status: Not yet sorted out.

Schedule: Not yet sorted out.

Details of facilities included in the project/ schemes:

Item No.	Component	Location	Capacity (m ³ /day) or m ³
1	Intake structures	Kelani Ganga, Welivita	400,000
2	Water treatment plants	Welivita (Stage 1 & Stage 2)	180,000
			180,000
3	Ground Reservoirs	Hokandara	6,000
		Maharagama	10,000
		Pannipitiya	7,500
4	Elevated Towers	Maharagama	2,000
		Magamma	2,000

ජාතික ජල සම්පාදන හා ජලාපවහන මණ්ඩලය
 தேசிய நீர் வழங்கல் வடிகாலமைப்புச் சபை
National Water Supply & Drainage Board



සභාපති தலைவர் Chairman	Tel : 2634488 Fax : 2611234	උප සභාපති உப தலைவர் Vice Chairman	Tel : 2635883 Fax : 2610034	ප්‍රධාන කාර්යාලය தலைமை அலுவலகம் Head Office	2638246, 2638256 2638259, 2638260 Tel : 2611589, 2637195 2637194, 2624526	ත.ප.ප. த.பெ.இல. P.O. Box	14, සර්ලේනියා Mt. Lavinia
සාමාන්‍ය කාර්යාල பொது முகாமையாளர் General Manager	2636449	සේවා කාර්යාල தொழிற்பாட்டுப் பணிப்பாளர் Working Director	Tel : 2636901 Fax : 2611590	Hunting No : 2638999 Fax : 2636449, 2635999 E-mail : nwsdbch@sltnet.lk		ගාලු පාර காலி வீதி Galle Road	රත්මලාන இரத்தமலானை Ratmalana, Sri Lanka.
මගේ අංකය எனது இல. My No.	AGM (JPU)/Pre-Stressed Water tank/6.5/2013 (7103)			ඔබේ අංකය உமது இல. Your No.		දිනය திகதி Date	December 19, 2013.....

Eng. Hiroshi Nishio
 Senior Executive Director
 Abe Nikko Kogyo Co.,Ltd.
 13-3, Rokujo Omizo 3-chome, Gifu City,
 Gifu Prefecture, Japan

Dear Sir,

Expression of Interest for the Pilot Project on Dissemination of Pre-stressed Concrete Water Tank

NWSDB has deepened its interest in the Pre-stressed Concrete (PC) water tank, through the series of discussions we had with the Joint Study Team of Abe Nikko and KMC and the final seminar in December 2013. We learned that a PC tank has durable features, can be constructed with less cost in shorter period compared to a conventional RC tank.

We noted that your company plans to apply for a funding scheme of JICA for a project on dissemination of PC water tank. We understood that the purposes of the project are to demonstrate and transfer the PC technology to NWSDB and the other stakeholders in Sri Lanka through constructing a PC water tank in Western Province.

We are ready to cooperate with you in the project by undertaking responsibility and cost for land acquisition and compensation, site clearance and leveling, construction and installation of the other facilities, such as pump house and pumps if any, and connection of transmission line to the tank as well as widening of an access road to the site if needed.

Thanking
 Yours sincerely,

Eng. Karunasena Hettiarachchi
 Chairman
 NWSDB

MINISTRY OF WATER SUPPLY & DRAINAGE
 "Water - Every Drop is Precious"